

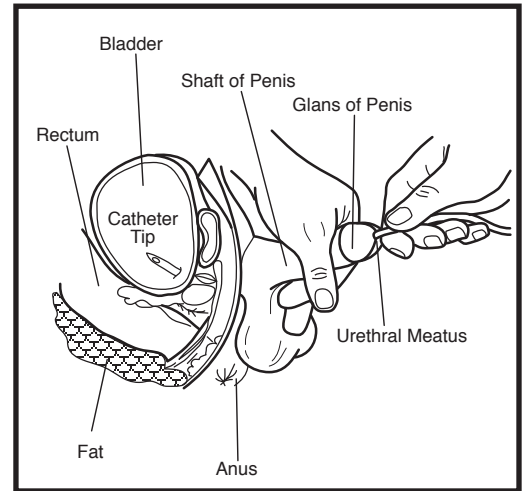
Male Catheter Model

Directions

- Washing and sterilizing techniques may be used as directed by the instructor. (See the recommended directions for cleaning the model below.)
- A #14 or #12 catheter is recommended.
- Generously lubricate the catheter. The BIOLIKE™ synthetic tissue requires more lubricant than a real patient.
- With the penis lifted, insert the catheter into the urethra, and gently pass it through into the bladder.
- The retention catheter may be inflated in the bladder as desired.

Care Instructions

This model is made of BIOLIKE™ synthetic tissue and should be handled carefully. Treat the model as carefully as human tissue. To ensure maximum life of the model, follow these instructions. Before each use, lightly powder the model with talcum powder to give it a smooth feel. When needed, clean the model with soap and water, but avoid soaking the model in water. Pat the model dry with a clean cloth and re-powder it. Do not allow the model to come into contact with ink or printed materials. Do not puncture the model with fingernails or other sharp objects. Keep the model stored in its protective case when not in use, and avoid exposure to heat.



HEALTH EDCO®

©1987, 2021 HEALTH EDCO®
HealthEdco.com
26104/26109-15304-0421 RM96830

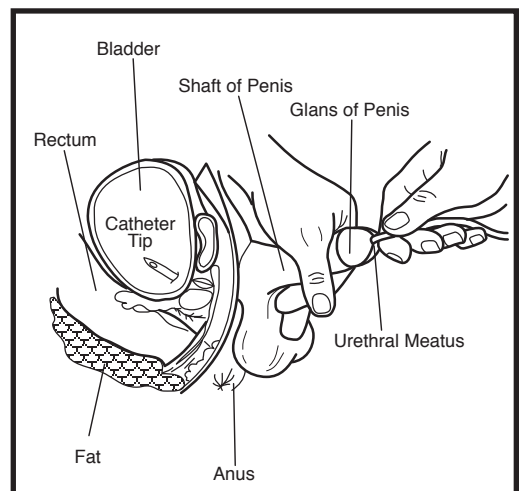
Male Catheter Model

Directions

- Washing and sterilizing techniques may be used as directed by the instructor. (See the recommended directions for cleaning the model below.)
- A #14 or #12 catheter is recommended.
- Generously lubricate the catheter. The BIOLIKE™ synthetic tissue requires more lubricant than a real patient.
- With the penis lifted, insert the catheter into the urethra, and gently pass it through into the bladder.
- The retention catheter may be inflated in the bladder as desired.

Care Instructions

This model is made of BIOLIKE™ synthetic tissue and should be handled carefully. Treat the model as carefully as human tissue. To ensure maximum life of the model, follow these instructions. Before each use, lightly powder the model with talcum powder to give it a smooth feel. When needed, clean the model with soap and water, but avoid soaking the model in water. Pat the model dry with a clean cloth and re-powder it. Do not allow the model to come into contact with ink or printed materials. Do not puncture the model with fingernails or other sharp objects. Keep the model stored in its protective case when not in use, and avoid exposure to heat.



HEALTH EDCO®

©1987, 2021 HEALTH EDCO®
HealthEdco.com
26104/26109-15304-0421 RM96830