



Be
READY

DANi Teen & Young Adult Advanced Training Solution

Nasco
HEALTHCARE

Quick Start Guide

DANi is packaged with arms and female genitalia attached. Legs have been disconnected to prevent possible damage during shipping.

1. Carefully unpack the product's individual components (see Fig. 1).

Your DANi manikin includes:

- Head
- Torso
- Arms
- Legs
- Female genitalia
- Male genitalia
- Accessories

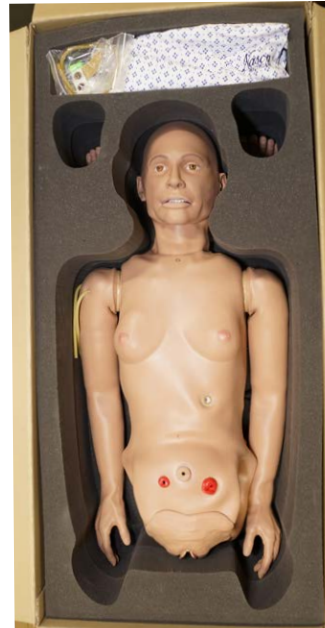


Figure 1



2. Connect left and right legs to the torso (see Fig. 2).
3. Female genitalia attached, or connect male genitalia (see Fig 3).
4. Your product is ready for use.

DANi comes pre-assembled to support nasogastric tube procedures (lavage, gavage). Please see the Set Up section of the instruction manual if you want to configure your product to support different airway management procedures.

For more information on your DANi manikin, please contact our customer service team at 1-833-NASCOHC (627-2642) or email us at info@nascohealthcare.com. We are happy to help you!



Figure 2

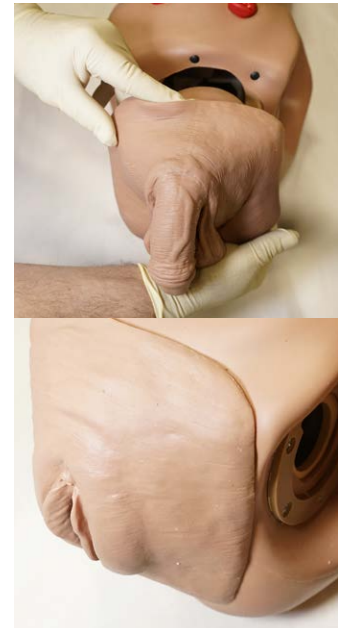


Figure 3



Please visit
<https://nhcpartnerportal.com/products/manuals/>
for complete instructions.