



CathLabVR with Basic PCI

Revolutionizing the way we serve cardiovascular customers

CAE

Key Product Messaging:

Revolutionizing the Cardiovascular Learning Experience

Over **31,000** unique experiences with variable difficulty levels.

Unmatched instructor control and ease of use for customizing learner experience

Design and share customized curriculum.

Lifelike immersion with mixed reality.

Best in market realism for tool manipulations



Starting your Case

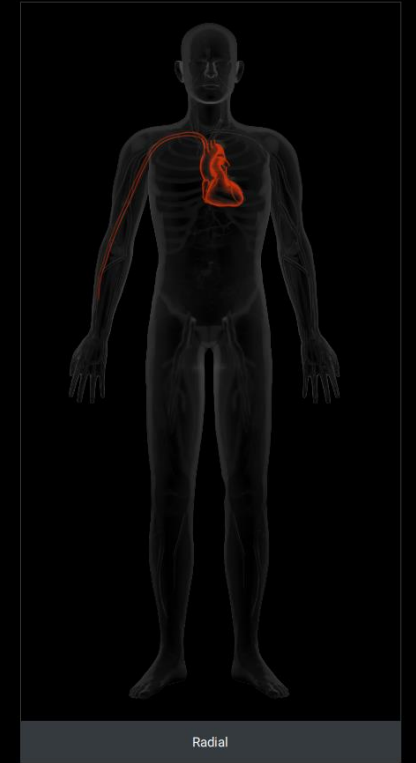
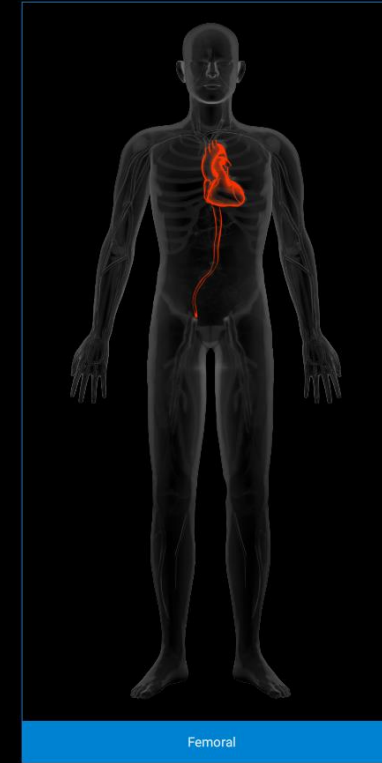
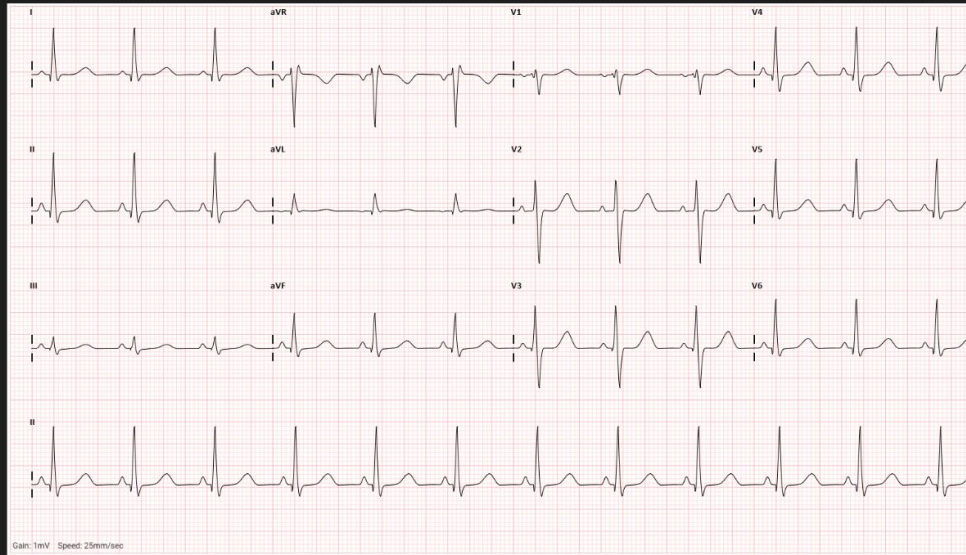
Simulation is Ready

Start

Patient History

A 70 year-old female presents with a non-ST-segment elevation myocardial infarction (STEMI) and is scheduled to arrive in 7 minutes from the emergency department. Preliminary ECG demonstrates a possible lateral blockage. Patient has been given analgesia, IV nitroglycerin and beta blockers.

12-lead ECG report:



Student Experience - Patient Presentation and Access

Unit Pricing (USD)

CathLabVR Base Unit

CAT-003 CathLabVR: \$52,000

High power laptop, second monitor touch screen, optical rail, c-arm joystick, foot pedal.

Wires, catheters, contrast syringe, balloon endoflator.

Software licenses Basic PCI and other included content.



AR Upgrade Package

Upgrade Items

SF Code	Description	Price
253K032600	HoloLens 2	\$4,500
147K671302	QR Code Tile and Software License	\$1,000
101K671305	Linksys Router	\$340

Single router supports multiple HL2's

Each HL2 requires one SW license



Services

TRN-CAT01 In-Person: \$4,390

VTRN-CAR01 Virtual (preferred): \$1,800

WAR-PCATH01 Express Warranty: \$4,950/year

First year Included in purchase price

No Installation fees



CathLabVR System

