

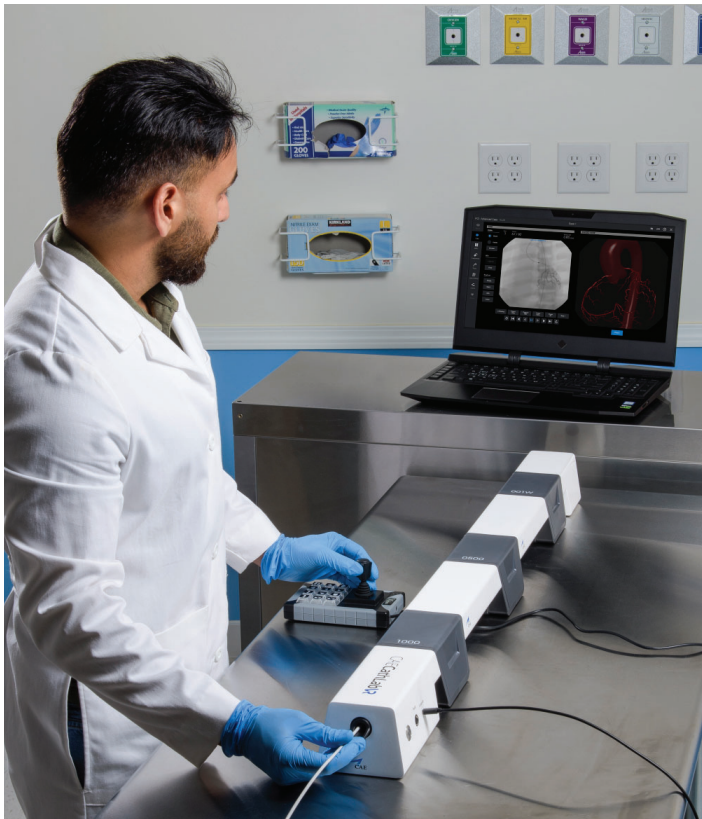
CathLabVR

Master the Basics of Coronary Procedures

Your worldwide
training partner
of choice



Discover the next generation of interventional cardiology training with CAE CathLabVR. Leveraging industry-leading realism to maximize confidence and training time, CathLabVR helps learners and practitioners master foundational cardiac skills.

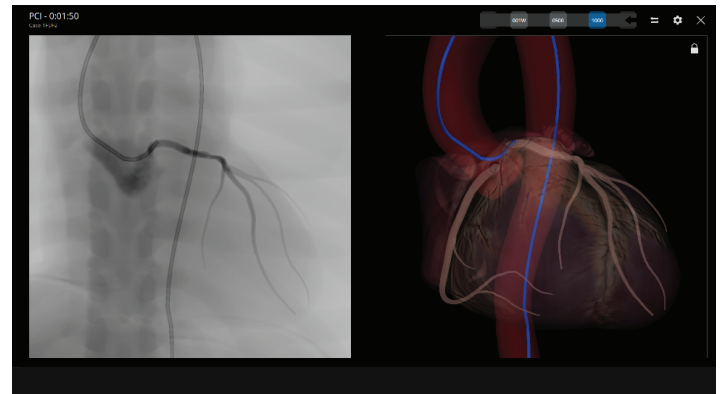
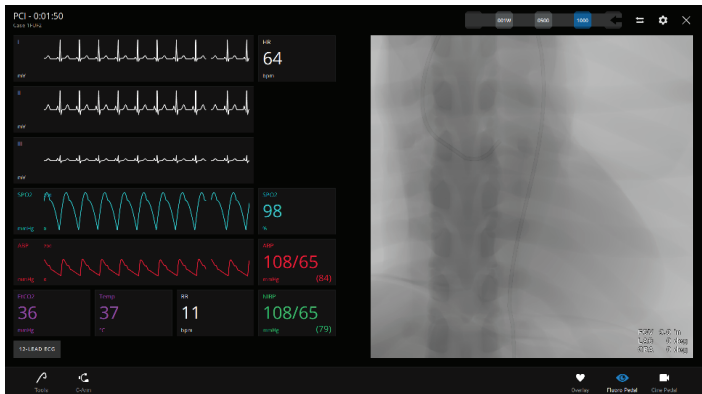


Elevate Cardiovascular Learning With

- More than 31,000 unique, self-directed, competency-based experiences
- True physics-based wire and catheter interactions
- Life-like immersion through mixed reality with Microsoft HoloLens 2
- Unmatched instructor control and ease of use to customize scenarios for learners
- Easy-to-design and -share customized curricula
- Industry-leading reliability

Powerful experiences require powerful platforms. CAE CathLabVR features:

- A high-performance laptop that supports lifelike, physiology-based experiences
- Quick connections to the included touchscreen or external monitors
- All the tools needed for realistic practice, including a joystick, fluoro pedal, syringes and endoflator
- Several learning modules
- A set-up time of less than 10 minutes



Learning modules

- Basic Percutaneous Coronary Interventions (PCI)
- Advanced PCI
- Transcatheter Aortic Valve Implantation (TAVI)
- Carotid Interventions
- Cardiac Rhythm Management (CRM)

Technical Specifications

Dimensions

Transport case: 11.02"H x 32.58"W x 18.40"D (28 cm x 82.8 cm x 46.7 cm)

Laptop: 1.7"H x 15.7"W x 12.5"D (4.32 cm x 39.9 cm x 31.6 cm)

Simulator box: 3.25"H x 46.75"W x 4"D (8.3 cm x 118.8 cm x 10.2 cm)

Weight

Base unit: 11.2 lbs (5.1 kg)

Transport case with equipment: 50 lbs (23 kg)

Learn more about CAE's cardiology solutions at
www.caehealthcare.com/surgical-simulation/cathlabvr/