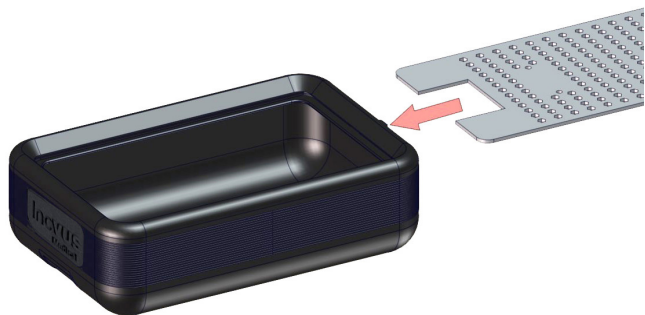


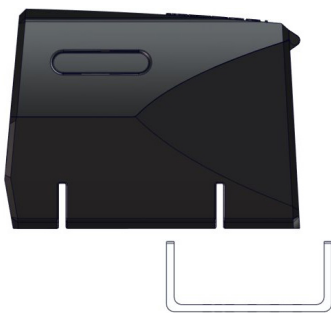
bozzini[®]
Hysteroscopy
Basic

Inovus[®]
Medical[®]

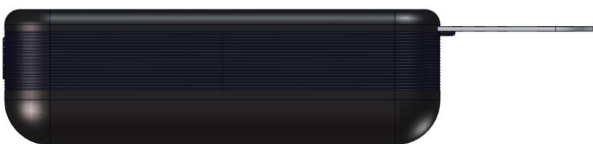
a c c e s s i b l e a f f o r d a b l e f u n c t i o n a l



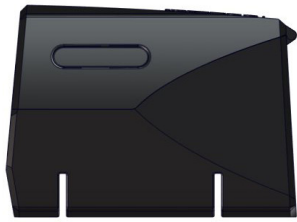
- 1 | Begin the assembly of your bozzini Hysteroscopy Basic simulator by sliding the white acrylic plate through the slot at the rear of the drip tray, remembering to stop half way before progressing to Step 2.



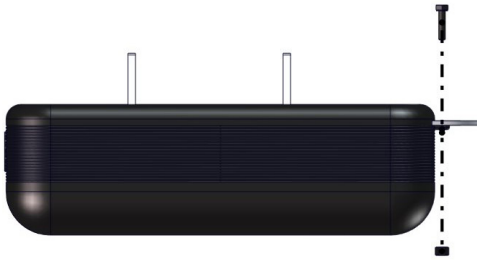
- 2 | With the acrylic plate positioned half way into the drip tray, place the U-shaped bracket onto the plate and align the two circular bolt holes on the bracket with those on the plate.



- 3 | Using two M5B3 bolts and two WN03 nuts provided, secure the bracket to the plate.



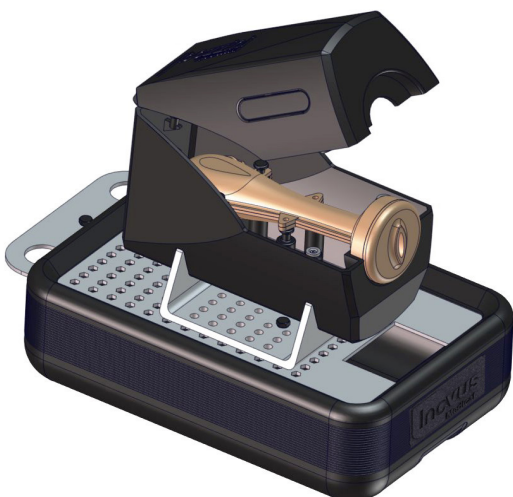
- 4 | Use the remaining bolt and nut to secure the acrylic plate at the rear of the drip tray. This ensures that the plate remains stationary whilst the simulator is in use.

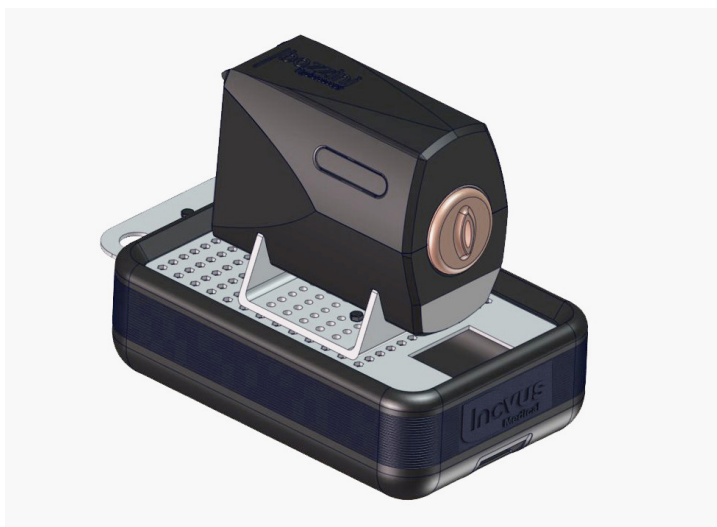


- 5 | You may now place the uterus housing onto the U-shaped bracket. Please note this is a push fit fixture.

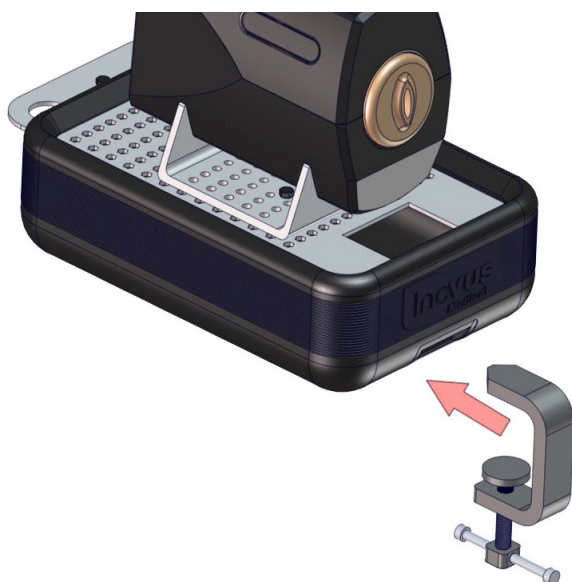


- 6 | Secure one of the uterus models within the housing by hooking the loops onto the internal fixings.





7 | Place the simulator onto a suitable surface for use.



8 | Using the clamp provided, anchor the simulator at the front of the drip tray. This should prevent movement during use.

Designed and manufactured by



E: info@inovus.org

T: +44 (0) 1744 752 952

W: www.inovus.org

