

# Adam, Rouilly

SERVING MEDICAL EDUCATION WORLDWIDE

## AR60 AMNIO ABBY® - ULTRASOUND GUIDED INVASIVE PROCEDURES SIMULATOR

Product Leaflet



Guy's and St Thomas'   
NHS Foundation Trust

  
Fife

**Tommy's**  
Registered charity no 1060508

## AR60 AMNIO ABBY® - ULTRASOUND GUIDED INVASIVE PROCEDURES SIMULATOR



Developed in collaboration with **Dr Graham Tydeman**, Consultant in Obstetrics and Gynaecology - NHS Fife, **Professor Andy Shennan** - Professor of Obstetrics, and **Dr Annette Briley** - Consultant Midwife, Clinical Trial Manager, Maternal and Fetal Research Unit, Guy's and St Thomas' Hospital, the **Amnio Abby®** simulator has been designed to enhance training in **ultrasound guided amniocentesis** and **chorionic villus sampling (CVS)**.

As Non-invasive Prenatal Testing (NIPT) becomes more common, Amnio Abby® enables clinicians to practice the skills and dexterity required for invasive procedures in a safe, controlled manner.

Using our expertise in material innovation and anatomical accuracy, the simulator has been designed to give a highly realistic sonographic representation of a pregnant mother's abdomen at 15 week gestation.

To enhance training scenarios the simulator includes two abdominal wall layers to simulate patients with increased Body Mass Index (BMI), variable amniotic liquor volume and separate placenta to ensure competency and help increase required skill levels.

### Features



Easy to use, minimal maintenance



Highly realistic sonographic image



15 week size fetus with umbilical cord insertion



Amniotic sac which may be punctured several times to allow for a number of invasive procedures to be simulated before replacement



Variable amniotic fluid volume allowing for training to be tailored for easy or difficult procedures



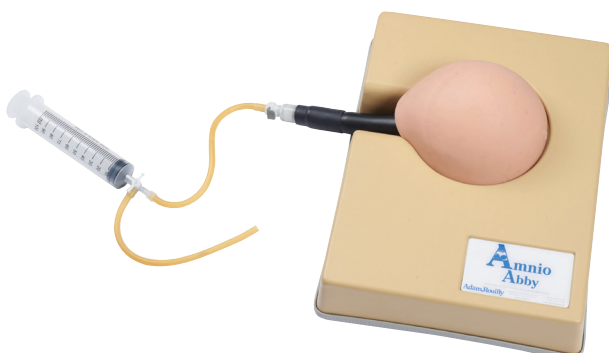
Separate placenta for posterior or anterior placement, to allow for transplacental scenarios as well as chorionic villus sampling (CVS) procedures



Two abdominal layers to allow for simulation of patients with a higher BMI



Scan the QR code to access the product video  
<https://youtu.be/Nu7pSbOulOM>



AR60 Amnio Abby®

## Skills

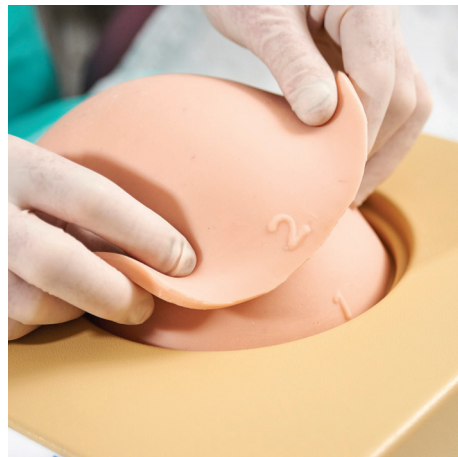
- A range of easy and more difficult procedures can be experienced by varying fetal position, abdominal layers, amniotic fluid volume and placental position enhancing simulation for both new trainees and experienced clinicians
- Visualisation under ultrasound of key anatomical structures including abdominal wall, placenta, fetus, umbilical cord and amniotic fluid
- Identification of a suitable needle entry point in the simulated abdomen
- Monitoring of the needle path under real-time ultrasound guidance
- Successful withdrawal of an amniotic fluid sample
- Transplacental needle approach simulation (via placement of the placenta and adjustment of the amniotic volume)
- Chorionic villus sampling (CVS) procedures
- Clinical planning and team work before, during and after invasive procedures
- Patient communication



Variable Amniotic Fluid Liquor Volume



Separate placenta for easy/difficult and transplacental scenarios



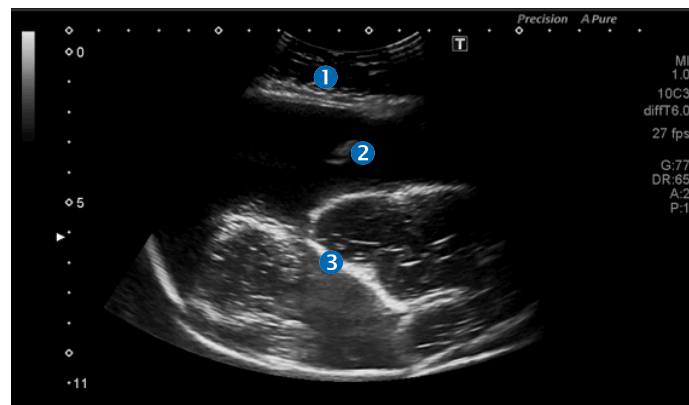
Two abdominal wall layers to simulate patients with higher BMI



Realistic feel and sonographic experience

## Supplementing Invasive Procedures Competency

- As Non-invasive Prenatal Testing (NIPT) and other techniques reduce the need for amniocentesis and other ultrasound guided diagnostic procedures, trainees and operator skills can be enhanced using this realistic simulator
- To remain proficient, guidelines state "competency should be maintained by carrying out at least 30 ultrasound guided invasive procedures per annum"<sup>1</sup>
- Amnio Abby® can help operators to have sufficient confidence to perform more advanced techniques such as cordocentesis and intrafetal procedures that will continue to be required even with the decline in diagnostic invasive tests



Ultrasound Image Example: "Easy Amniocentesis" with single abdominal wall layer and normal liquor volume

- ① Abdominal wall layer
- ② Echo Needle Tip
- ③ Fetus

## Includes

- Base
- 2 abdominal layers
- Fetal sac with 15 week-old sized fetus and umbilical cord
- Separate placenta
- Sac filling syringe and tubing
- Carrying case

## Replacement Part

**SPAR60 SIMULATED FETAL SAC & FETUS**

Guy's and St Thomas'   
NHS Foundation Trust

  
Fife

  
Registered charity no 1060508

<sup>1</sup> Professor Z Alfirevic FRCOG, Mr SA Walkinshaw FRCOG and Professor MD Kilby FRCOG. (2010). **Amniocentesis and Chorionic Villus Sampling, Green-top Guideline No. 8.** London. Royal College of Obstetricians and Gynaecologists, pp. 5 - 6



## 2 Year Guarantee

All products manufactured by Adam,Rouilly are covered by our full 2 Year Guarantee. This guarantee applies to models which have been used correctly and covers durability and functionality.



# Adam,Rouilly

As part of our policy of continual product development, the specification of products may alter without prior notice.

Adam,Rouilly has over 100 year's experience in providing quality medical models and simulators.

Should you require any further information please contact our Sales Department who will be pleased to help with your enquiry.

Adam,Rouilly Limited  
Castle Road  
Eurolink Business Park  
Sittingbourne  
Kent  
United Kingdom  
ME10 3AG

T: +44(0)1795 471378  
F: +44(0)1795 479787  
E: [sales@adam-rouilly.co.uk](mailto:sales@adam-rouilly.co.uk)  
[www.adam-rouilly.co.uk](http://www.adam-rouilly.co.uk)