

Adam, Rouilly

SERVING MEDICAL EDUCATION WORLDWIDE

AR10A X-RAY/RADIOGRAPHIC POSITIONING DOLL

Product Leaflet










AR10A X-RAY/RADIOGRAPHIC POSITIONING DOLL




An invaluable teaching aid in Schools of Radiography, without bringing discomfort or danger to patients or students.

Widely used by schools of radiography throughout the world.

Features

-  Life-size figure containing a fully flexible articulated skeleton produced from a specially selected grade of plastic
-  No metal parts are used in the articulation of the skeleton
-  Representations of the larynx, heart, lungs and kidneys are constructed from radiolucent material, making anatomical landmarks easily identifiable
-  The body covering has the combined properties of being able to simulate surface anatomy whilst remaining totally radiolucent
-  Weight – the doll is light enough to be carried easily
-  Realistic all-over joint flexibility including hip rotation and slight hyperflexion in the knees and elbows
-  Flexible and durable articulation of the skeleton ensures a lengthy period of use

 Scan the QR code to access the product video
<https://youtu.be/2U2LquUAGnks>



Skills

- Life size human figure for training radiographers in the following skills:
 - Positioning techniques
 - Patient handling
 - X-Ray machine use

Positioning

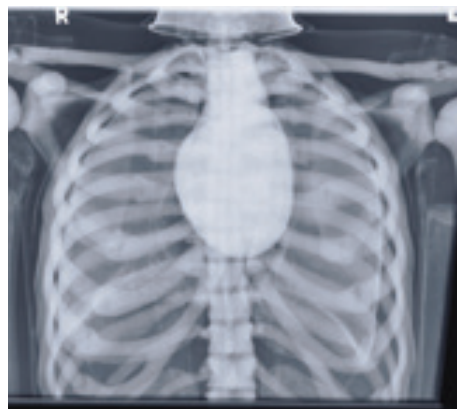
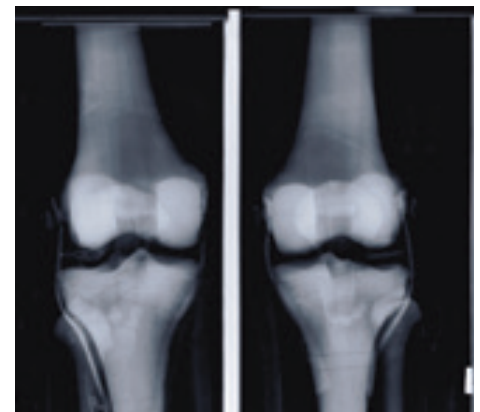
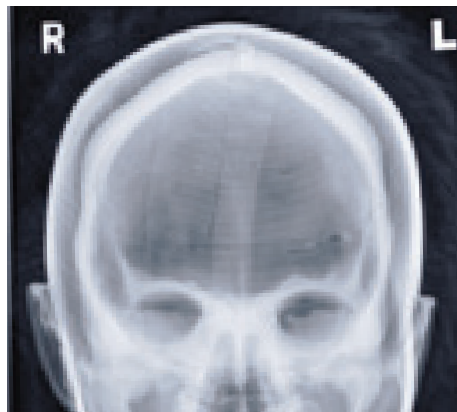
- The doll may be used in all recumbent positions and will lie naturally in the neutral position, prone or supine
- Use of an upright bucky is possible with supports
- The doll can be positioned for all standard projections. As with many patients in real life scenarios positioning aids such as foam blocks, wedges, sand bags or compression bands should be used

CT Scanning

- The X-Ray Positioning Doll can be positioned and imaged for a whole body CT (Computed Tomography) investigation
- Good images in terms of body outline and fundamental structure can be obtained. Certain areas of the skeleton structure e.g. thoracic vertebrae and the head of the femur gave similar values to the typical patient
- As the doll is very different from the human body in terms of attenuation it cannot be used for training in, or practising exposure control

Individual X-Rays for each Doll

- Each Doll is individually X-rayed and a copy of the images are supplied with the doll
- Customers can be reassured that there are no metal parts in the Doll by referring to the set of digital X-Rays which are supplied with each Doll
- Images shown were taken using medium frequency generator; no grid; fine focus; 100cm S.I.D. Fuji CR system





2 Year Guarantee

All products manufactured by Adam,Rouilly are covered by our full 2 Year Guarantee. This guarantee applies to models which have been used correctly and covers durability and functionality.



Adam,Rouilly

As part of our policy of continual product development, the specification of products may alter without prior notice.

Adam,Rouilly has over 100 year's experience in providing quality medical models and simulators.

Should you require any further information please contact our Sales Department who will be pleased to help with your enquiry.

Adam,Rouilly Limited
Castle Road
Eurolink Business Park
Sittingbourne
Kent
United Kingdom
ME10 3AG

T: +44(0)1795 471378
F: +44(0)1795 479787
E: sales@adam-rouilly.co.uk
www.adam-rouilly.co.uk