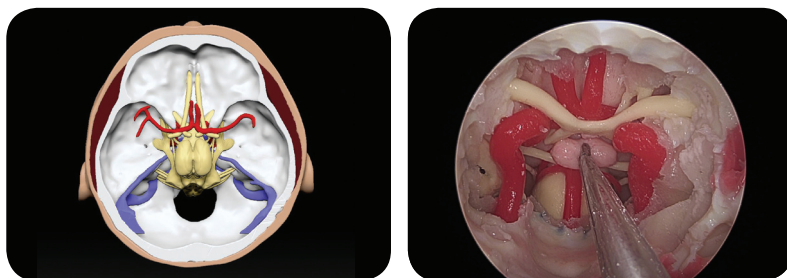




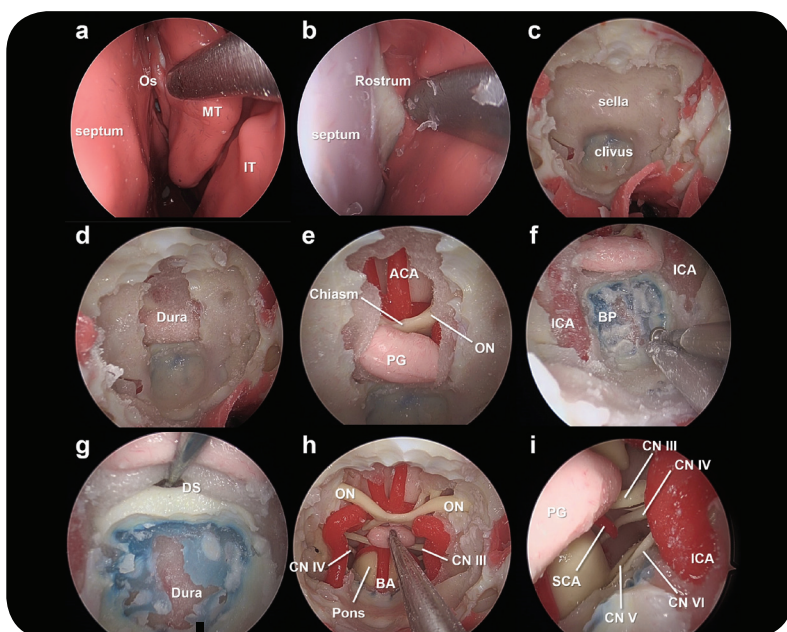
## Surgical Training through Realistic Anatomy Simulation

**Skull Base Surgery Simulator** is a model developed for the training purpose of pituitary tumor removal surgery.



In collaboration with an anatomical Ph.D., we've meticulously crafted a model that closely resembles real-life precision.

This highly effective model serves as a convenient and ethical alternative to cadavers for medical education, and it can be easily disposed of after use.



## Learn, Apply, Succeed!



More information  
about **ANATDEL**



# Skull Base Surgery Simulator

FOR SURGICAL TRAINING



### COMPANY

MEDICAL IP CO., LTD.  
**CEO** Sang Joon Park  
**Tel** +82 2 2135 9148  
**Address** 9F, Yeonkang Building, 15,  
 Jong-ro 33-gil, Jongno-gu, Seoul,  
 Republic of Korea

### USA OFFICE

**Address** 3003 N First St, San Jose,  
 CA 95134, United States  
**Tel** +1 408 7094470

### CHINA OFFICE

**Address** 008, Huixin IBC, 1,  
 Zhangbaya Road, Xi an, CHINA  
**Tel** +86 29 81016599

### CONTACT US

**KOREA** dtic@medicalip.com  
**USA** contact@medicalip.com  
**CHINA** china@medicalip.com  
**TECHNICAL** tech@medicalip.com  
**IR** ir@medicalip.com  
**RECRUIT** recruit@medicalip.co



Each of our products is proudly made in-house, from start to finish, ensuring the highest quality and attention to detail at every step of the production process.

### MEDICAL IP's 3D Printing Workflow

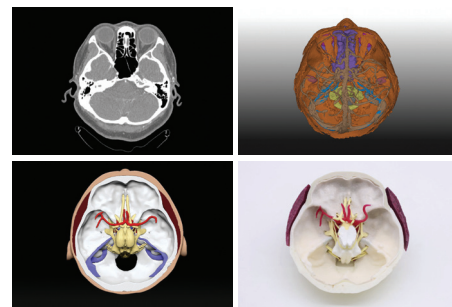
All of our processes, from medical image segmentation and 3D modeling to 3D printing and post-processing, are performed in-house to guarantee exceptional quality in the production of our simulators.



**Medical 3D Printed digital twin** for surgical planning, simulation, medical research and education.

### Streamlined Process for Medical 3D Printed Digital Twin

Using our medical image segmentation and modeling software, MEDIP PRO, we process actual patient medical image data to prepare 3D print files for our simulators.



**FDA 510(k) · CE · MHRA · MFDS**  
All-in-one Medical Imaging Solution for Analysis, 3D Modeling and Digital Twin.

## Skull Base Surgery Simulator

The Most Advanced Skull Base Surgery Simulator

### Available for purchase in 2 options

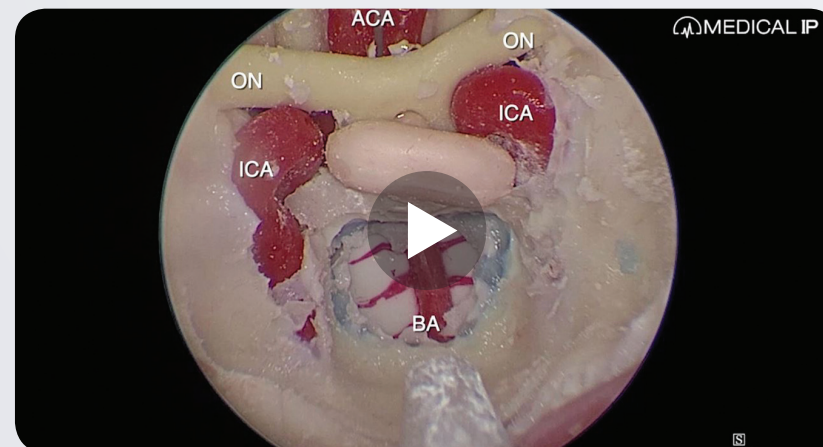
Both types look identical, but they are available for purchase in two different options based on the level of implementation.

**Standard** : Possible for TSA, TOA

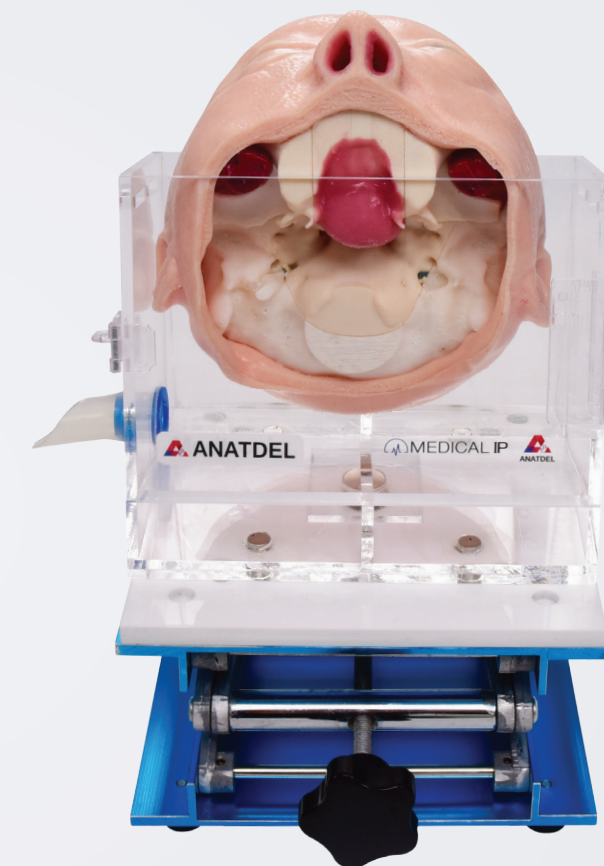
**TSA Exclusive Model** : Only TSA Available, Not supported TOA

### Model Composition

The model features a head tilted at a 15-degree angle to simulate the surgical environment, and it is easy to dispose of after use. Stand and lift are available for rent.



Scan to play the video



### Anatomical Scope

- skin
- skull
- eyeballs
- orbital septum
- nasal cavity
- nasal septum
- bilateral turbinate
- ethmoid sinus
- sphenoid sinus
- brain
- cerebrum
- PONS
- ICA
- basilar
- cerebral vein
- CN 1-12

Based on actual patient's DICOM data and MEDICAL IP's 3D printing technology

