



Xtreme

ADAM-X Xtreme is the highest fidelity adult patient simulator, ideal for medical training, advanced life support scenarios, and simulation of countless clinical cases. Tetherless and wireless, **ADAM-X Xtreme** is an effective tool to develop the skills of general and specialized practitioners. Some of the manikin's unique features include life-like movements of the eyelids; pupillary reflexes; bodily secretions as tears, sweating, and urine; convulsive movements; and a realistic silicone skin that colorizes to simulate conditions like cyanosis, jaundice, and paleness.

General

- 1.80m - 80kg
- Skin tone: Dark, Medium, or Light
- Supine, lateral, and sitting positions
- Wireless and tetherless
- Battery life of approximately 3 hours
- Internal electrical power and air compressor
- Bluetooth stethoscope simulator

Airway

- Realistic anatomy: tongue, epiglottis, vocal cords, trachea, and esophagus
- Airway maneuvers: head tilt, chin lift, and jaw thrust
- Lock-jaw, tongue edema, laryngeal edema
- Removable front teeth
- Oro- and nasotracheal intubation
- Insertion of oro- and nasopharyngeal airways
- Insertion of supraglottic devices
- Right main bronchus intubation
- Needle and surgical cricothyrotomy

Breathing

- Realistic chest rise and fall
- Ventilation sensor with volume measurement
- Spontaneous breathing
- Bag-valve-mask ventilation
- Lung auscultation
- Several breathing patterns
- Pneumothorax
- Thoracic needle decompression
- Chest tube placement

Cardiovascular

- Blood pressure measurement
- Adjustable heart rate and BP levels
- 14 palpable pulses
- Extensive ECG library
- Heart auscultation

CPR

- Heart massage position detection
- Realistic compression resistance
- Feedback on CPR quality
- Defibrillation with real devices



Other

- Eyelids movement
- Pupillary reflexes
- Convulsion
- Cyanosis, jaundice, paleness
- Tears, drooling, sweating, ear secretion
- Vocal sounds
- Abdominal thrust maneuver
- Stomach distension
- Bowel sounds
- Urethral catheterization
- IV access
- Intraosseous insertion

Software

- Wireless operation
- Multi-parameter patient monitor
- 14 pre-programmed scenarios
- Detailed debriefing
- Built-in AV recording possible
- Scenario editor
- ECG and sound editor
- Automatic drug recognition



Visual clinical conditions

Simulation of cyanosis, jaundice, fever, bruises, and paleness coloring ADAM's face and fingers



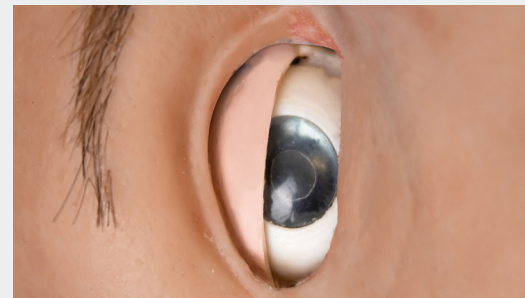
Palpable pulses

14 sites to check central and peripheral pulses



ECG sensor

ECG monitoring using a real device. Extensive ECG library presented in a 12-lead ECG display.



Pupillary reflex

The pupils can constrict and dilate in response to the light.



Scenarios

14 pre-programmed scenarios that can be easily edited + Scenario Editor to create your own completely customizable scenarios.



Realistic pulmonary system

ADAM-X can be manually ventilated or attached to a real mechanical ventilator.