

2.5 CM FAT RING FOR ABDOMEN PHANTOM

Age
Category

Adult

Body
Region

Abdomen

Target
Modality

CT

Accessory
type

Fat ring

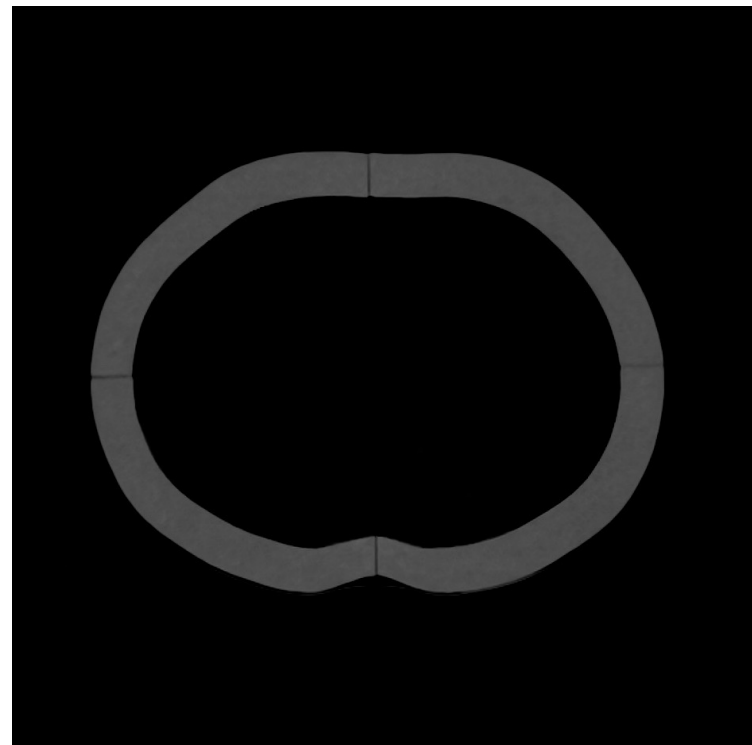


This accessory fits the following phantoms:

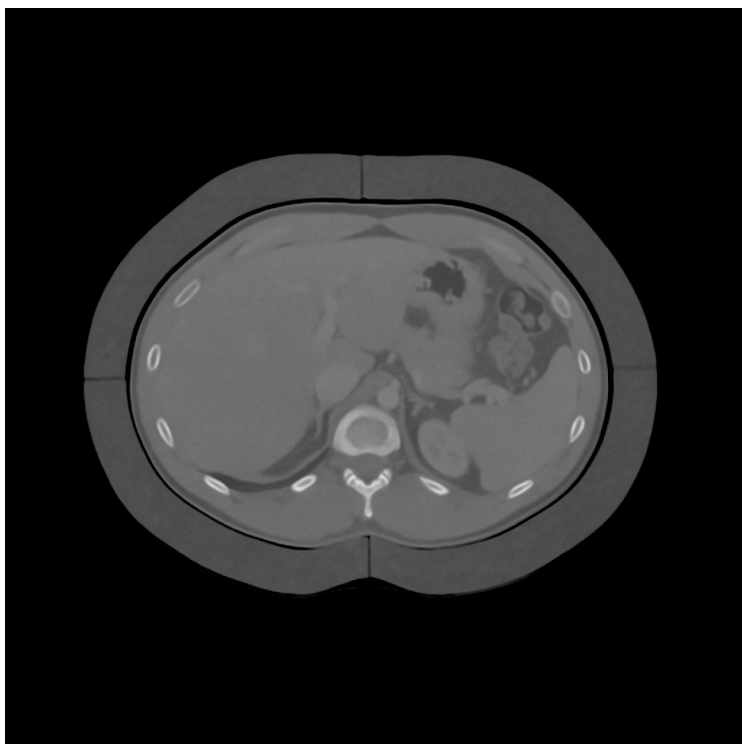
- Abdomen phantom pv
SKU: 53-02
- Abdomen phantom pv LC spheres
SKU: 53-03
- Abdomen phantom pv cylinders
SKU: 508-05

This 2.5 cm thick fat ring is made of adipose tissue equivalent material and can be mounted around abdomen phantoms 53-02, 53-03 or 508-05 for scanning. It consists of four parts that fit the phantom shape.

Fat rings for other phantoms or with other thicknesses are also available upon request. Contact us at info@phantomx.de.



2.5 CM FAT RING FOR ABDOMEN PHANTOM



Specifications

Size	Approx. 320 x 242 x 150 mm
Weight	Approx. 2670 g
Thickness	2.5 cm
Material	Cellulose-polymer composite - adipose tissue equivalent -

Fitting phantoms

- Abdomen phantom pv
SKU: 53-02
- Abdomen phantom pv LC spheres
SKU: 53-03
- Abdomen phantom pv cylinders
SKU: 508-05

For more information visit
www.phantomx.de

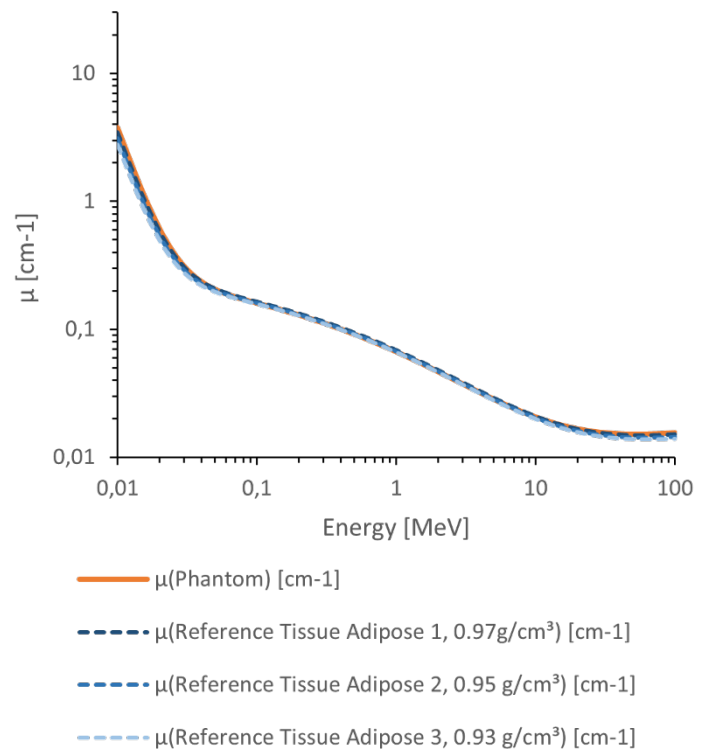
2.5 CM FAT RING FOR ABDOMEN PHANTOM

General indications

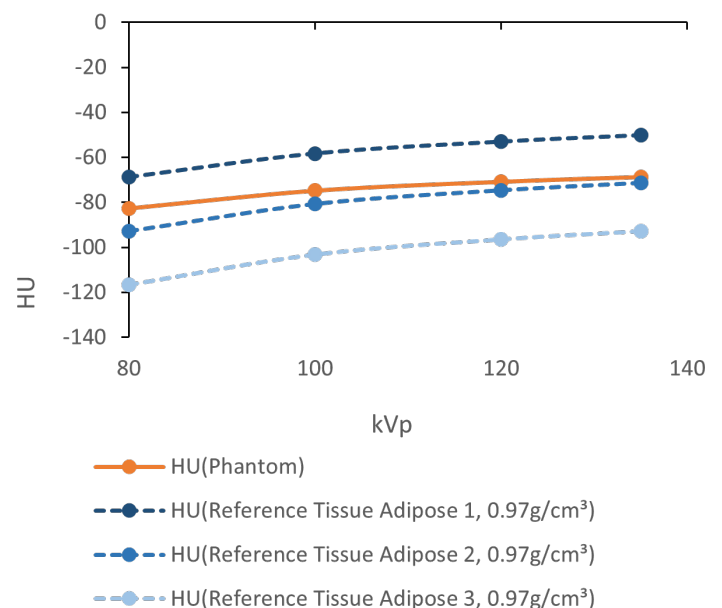
- The accessory is made of a cellulose-polymer composite material with properties similar to hardwood. If handled carefully, it will last a long time.
- The accessory is coated with a protective layer. If the protective layer is undamaged, the accessory can be cleaned using a damp cloth (water or mild detergent).
- Protect from direct sunlight.
- Maintain a storage temperature of 10 °C to 30 °C. If the accessory is exposed to temperatures below -10 °C or above 45 °C, it can be severely damaged.
- The accessory is not certified as medical device.

Attenuation properties

Linear attenuation coefficients [cm^{-1}] (calculated)



Hounsfield units (calculated)



Tissue Reference: Woodard HQ, White DR. The composition of body tissues. Br J Radiol. 1986.