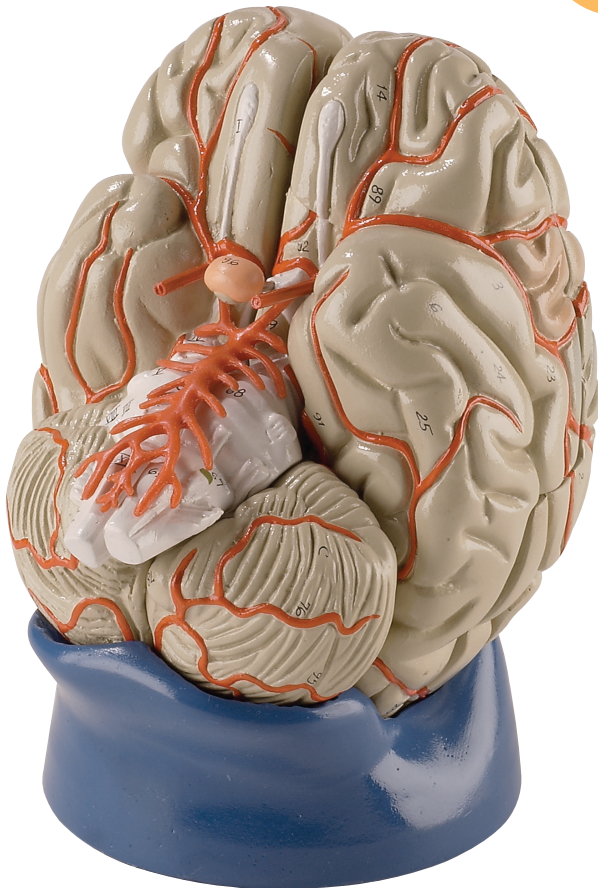




Deluxe Eight-part Brain Model

Numerical Identification Key for Model 0178-00



denoyer.com

P.O. Box 1727 • Skokie, IL 60076 • ph 800-621-1014 • f 847-929-4586

Presentation of the Model

A. Cerebrum

1. Right Hemisphere
2. Left Hemisphere
3. Sylvian fissure (*lateral sulcus*)
4. Central sulcus (*of Rolando*)
5. Frontal lobe
6. Temporal lobe
7. Parietal lobe
8. Occipital lobe
9. Frontal Pole
10. Occipital Pole
11. Superior frontal gyrus
12. Middle frontal gyrus
13. Inferior frontal gyrus
14. Orbital part of the frontal gyrus
15. Precentral gyrus (*Somatomotor*)
16. Postcentral gyrus (*Somatosensory*)
17. Intraparietal sulcus
18. Superior parietal lobule
19. Inferior parietal lobule
20. Lateral occipitotemporal gyrus
21. Angular gyrus
22. Supramarginal gyrus
23. Superior temporal gyrus
24. Middle temporal gyrus
25. Inferior temporal gyrus
26. Cingulate gyrus
27. Paracentral lobule
28. Precuneus
29. Cuneus
30. Lingual gyrus
31. Parahippocampal gyrus
32. Occipitotemporal gyrus (*fusiform gyrus*)
33. Uncus

B. Brain stem (*left half*)

34. Corpus callosum
35. Genu of corpus callosum
36. Rostrum of corpus callosum
37. Sulcus of corpus callosum
38. Body of fornix
39. Anterior commissure
40. Interthalamic adhesion
41. Posterior commissure
42. Corpora quadrigemina
43. Pineal body
44. Optic thalamus
45. Insular lobe
46. Interventricular foramen
47. Cerebral aqueduct (*Sylvian aqueduct*)
48. Lamina terminalis
49. Optic chiasm
50. Tuber cinereum
51. Cerebral peduncle
52. Pons varolii (*Tuber anulare*)
53. Medulla oblongata
54. Spinal cord
55. Fourth ventricle
56. Corpora striata
57. Stria terminalis
58. Left column of fornix
59. Pulvinar of thalamus
60. Medial geniculate body
61. Superior colliculus of geniculate body
62. Inferior colliculus of geniculate body
63. Superior cerebellar peduncle
64. Middle cerebellar peduncle
65. Fasciculus gracilis
66. Pyramid
67. Olive
68. Sulcus of pons
69. Mammillary body
70. Optic tract

C. Dissection of left hemisphere

- 71. Posterior horn of lateral ventricle
- 72. Hippocampus
- 73. Calcar avis
- 74. Commissure of hippocampus

D. Cerebellum

- 75. Superior vermis
- 76. Inferior vermis
- 77. Flocculus
- 78. Tonsilla
- 79. Arbor vitae
- 80. Lateral longitudinal fibers of corpus callosum
- 81. Tapetum
- 82. Septum pellucidum
- 83. Habenualar commissure
- 84. Choroid plexus of the third ventricle
- 85. Superior medullary vellum
- 86. Decussation of superior peduncular fibers
- 87. Longitudinal fibers of the pons

Blood Vessels

- 88. Internal carotid artery*
- 89. Middle cerebral artery
- 90. Anterior cerebral artery
- 91. Middle cerebral artery
- 92. Anterior communicating artery

Pituitary (Hypophysis)

- 93. Anterior lobe of the pituitary gland
- 94. Posterior lobe of the pituitary gland

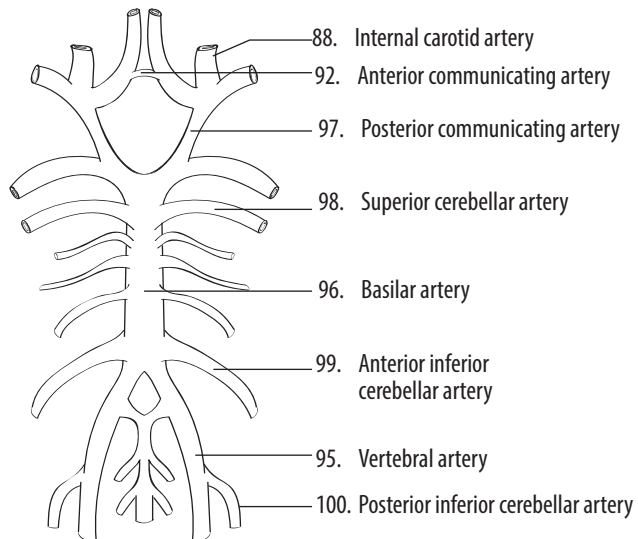
Circle of Willis

- 95. Vertebral artery*
- 96. Basilar artery*
- 97. Posterior communicating artery*
- 98. Superior cerebellar artery
- 99. Anterior inferior cerebellar artery
- 100. Posterior inferior cerebellar artery

* labeled *only* in diagram below

Cranial nerves

- I Olfactory nerve
- II Optic nerve
- III Oculomotor nerve
- IV Trochlear nerve
- V Trigeminal nerve
- VI Abducens nerve
- VII Facial nerve
- VIII Vestibulocochlear nerve
- IX Glossopharyngeal nerve
- X Vagus nerve
- XI Spinal accessory nerve
- XII Hypoglossal nerve





Autographed Anatomy

Molded and hand-painted in the United States by experienced artisans. Proudly autographed and dated to show that we stand by our products. The Autographed Anatomy™ product line carries a Lifetime Guarantee against manufacturing defects.

Care of Denoyer-Geppert Models

Your Denoyer-Geppert model was designed and manufactured to provide years of satisfactory service. Our models are molded of durable vinyl plastic. The finest lacquers and inks are used in the hand-painting and numbering of all our models.

In order to clean the model, you should wipe it with a damp cloth, or a cloth wet with mild soap solution, and wipe dry.

Avoid placing the model in direct sunlight for extended periods. A cloth cover or case will help keep the model clean.

Plastic covers not recommended