

# Wireless IP Tuya Video Intercom User Guide

VM-100W Kit



# Content

<b>1. Monitor and outdoor pairing</b>	3
1.1 Monitor and outdoor A pairing	3
1.2 Monitor and outdoor B pairing	3
<b>2. Monitor Operation Instruction</b>	4
2.1 Main GUI	4
2.2 Recording Center	5
2.2.1 Photo Record	5
2.2.2 Call Record	5
2.2.3 Message Record	6
2.3 Monitoring Center	6
2.4 Video Intercom	7
Add device to Tuya	7
APP Interface Introduction	9
2.5 User Settings	12
2.5.1 System Info	12
2.5.2 Ringtone Setting	12
2.5.3 Time & Date Setting	13
2.5.4 Video Brightness	13
2.5.5 Volume Setting	14
2.5.6 Language Setting	14
2.5.7 Screen Brightness Setting	15
2.5.8 Wallpaper Setting	15
2.5.9 Screen Saver Setting	16
2.5.10 Delay Setting	17
2.6 System Settings	18
2.6.1 Color Adjustment	18
2.6.2 System Password Setting	19
2.6.3 System Reset	19
2.6.4 Software Upgrade	19
2.6.5 Record Mode Setting	20
2.6.6 Outdoor Station Parameters Resetting	21
2.6.7 Card	21
<b>3. Technical Parameter</b>	22
<b>4. Installation Indoor Monitor</b>	22

# 1 Monitor and outdoor pairing

After the monitor and outdoor station are powered on, press the LINK button of the indoor monitor with long time, press the outdoor station pairing button at the same time, and release the button when the signal light flashes quickly to complete the pairing.

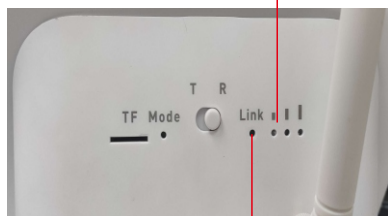
Indoor monitor T stands for STA mode, indicating that the indoor monitor is in receive mode. R indicates AP mode, which indicates that the indoor monitor is in transmit mode.

Note: 1). If the indoor monitor is set to R, the door station needs to be set to T.  
 2). If the indoor monitor is T, the door station needs to be set to R.

## 1.1 Monitor and Outdoor A pairing

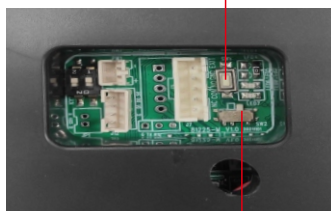


Pic 1.1 Press and hold this button while pairing

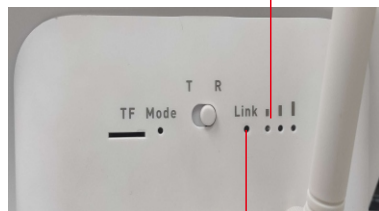


Pic 1.2 Press and hold this button while pairing

## 1.2 Monitor and Outdoor B pairing



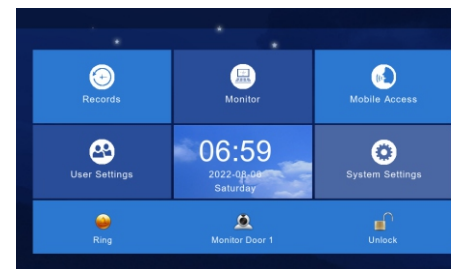
Pic 1.3 Dial this button to the right side



Pic 1.4 Press and hold this button while pairing




# 2 Monitor Operation Instruction

## 2.1 Main GUI









Pic 2.1

- 1) There are Menu, Shortcut keys, Status
- 2) Menu including: recording center, security zone, monitoring center, video intercom, user setup, system setup
- 3) Shortcuts Introduction

Shortcut Icon	Shortcut Name	Funciton
	Ringtone On/Off	Turn On/Off button ringtone or call ringtone
	Door 1 Monitoring	Monitor outdoor station 1
	Unlock	Open situation

### 4) Status Icon Instruction

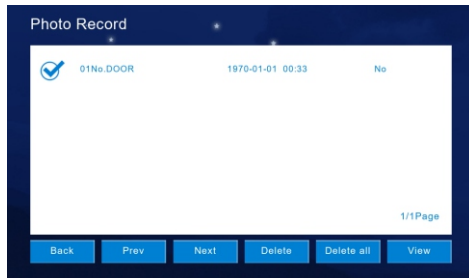
- ① Unread message: 
- ② Missed call: 
- ③ Unread public message: 

Others	Unread Message	Missed Call	Unread public message
			

## 2.2 Recording Center


### 2.2.1 Photo Record

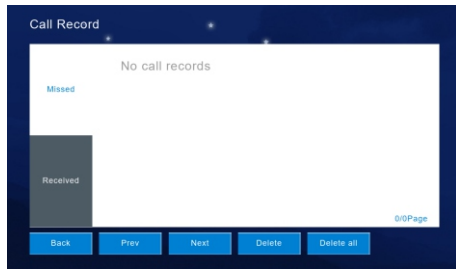
Storage calls, motion detections, snapshot pictures. Click "View" button can review the snapshot pictures.




Pic 2.2.1

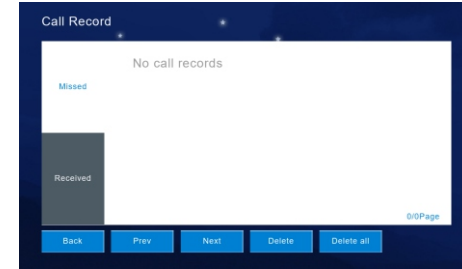
### 2.2.2 Call Record

- 1) The device will save the call records which includes Missed Call, Dialed Call, Received Call and records in details (Date, Time, Read Status).
- 2) Choose the corresponding device and Click "View  " to check the records in details included pictures or videos.



Pic 2.2.2.1

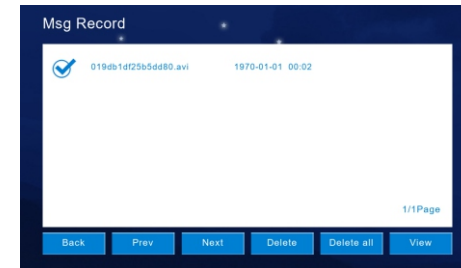
- 3) Redialing the extension monitor when "Redial  " is available to click after you selected a related record from "Missed, Received, Dialed". Meanwhile, you can delete a record or all records after selected.



Pic 2.2.2.2

### 2.2.3 Message Record

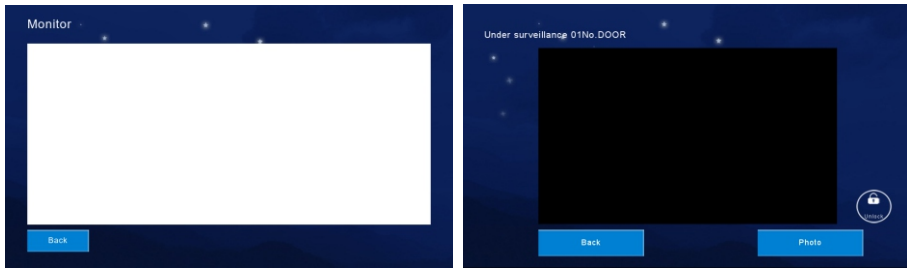
Visitor can leave "Voice or Video Message" to householder, if there is no response after the outdoor station is pressed. And click "View" to know the message details included Device Info, Date Time, Record Status after you selected one record. Meanwhile, you can delete a recorder all records after selected.



Pic 2.2.3

## 2.3 Monitoring Center

Available to monitor all the outdoor stations, IP camera, and can snapshot pictures and unlock at the monitor interface. The monitor time is 1 min.



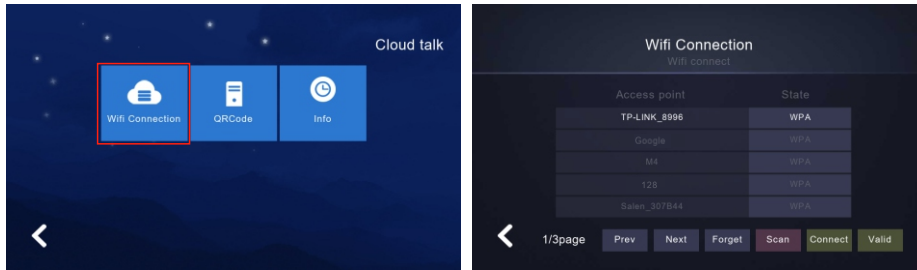
Pic 2.3

## 2.4 Video Intercom

### Network Paring

#### Indoor monitor setting

- 1). Click “WiFi connection” of indoor monitor, choose family WiFi, connect WiFi. Click QR code, If WiFi remind “Not QR Code info ret-933” , Which need to power off to restart the indoor monitor.



Pic 2.4.3.1

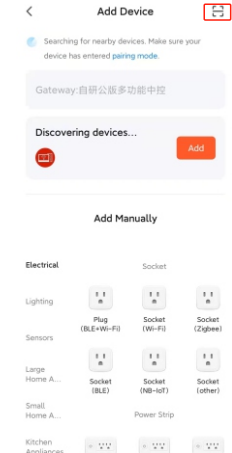
**Note:** only available to set the “Could Intercom Function” in “01 Monitor Extension (Master unit)”

- 2). APP download and registration  
Download Tuya smart APP from Google Play store, IOS download from APP store.
- 3). Run the APP, register an account with correct country and area.
- 4). Login the APP after registration.
- 5). Scan QR code add the monitor into APP. Open Tuya smart APP, click “add device” or “+” on the top right (pic 2.4.3.2).

- 6). Click the “Scan QR code” icon on the top right (pic 2.4.3.3).

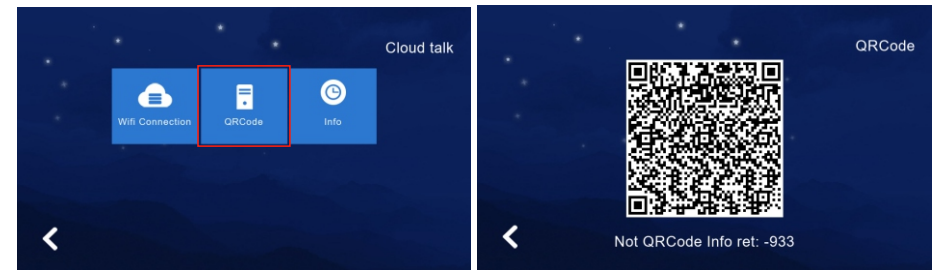


pic 2.4.3.2



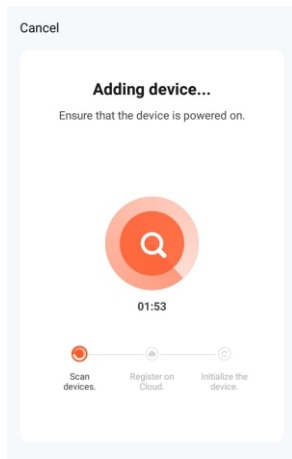
pic 2.4.3.3

- 7). Click “QR code” in indoor monitor, scan it (pic 2.4.3.4).

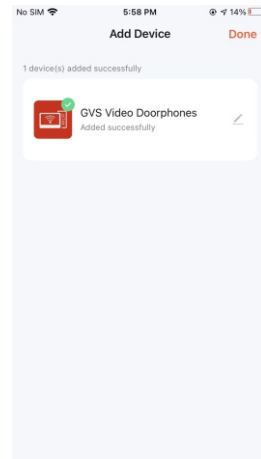


Pic 2.4.3.4

- 8). After scan QR code successfully, Tuya APP turn to below interface (pic 2.4.3.5).
- 9). Wait the progress 100% complete, the device will be successfully added, it will enter the following interface (pic 2.4.3.6).

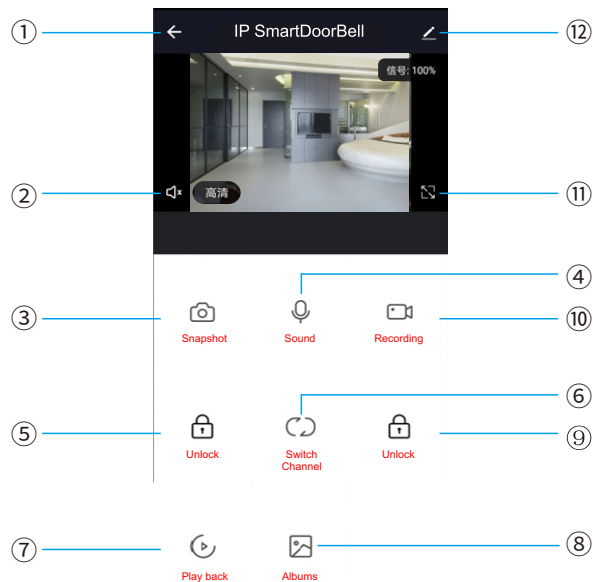


pic 2.4.3.5



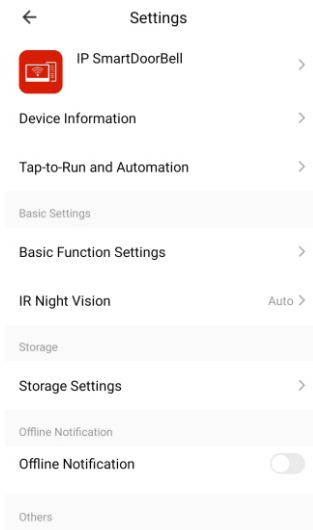
pic 2.4.3.6

## APP Interface Introduction



Pic 2.4.3.7

- ① Hang up (back): exist the interface when press this icon while talking or monitoring.
- ② Speaker: Can hear the voice from outdoor station when turn on, and no voice when turn off. Can not talk while monitoring.
- ③ Picture snapshot: Can snapshot the images while talking or monitoring.
- ④ Micphone: Call panel calls and answered on smartphone, turn on this icon, the micphone is on, the voice can go to outdoor station. If not turned on, outdoor station cannot hear the voice from smartphone. This functions is invalid while monitoring.
- ⑤ Outdoor Unlock: Can unlock the lock connected to the call panel while talking or monitoring.
- ⑥ Channel switch: Can switch to monitor other call panels while talking or monitoring. Have 4 channels includes DOOR1, DOOR2, DOOR3, DOOR4, and matches to apartment system or high level system is NO.1 DOOR, NO.2 DOOR, NO.3 DOOR, NO.1 Villa, and matches to villa system is NO.1 Villa, NO. 2 Villa, NO.3 Villa, NO.4 Villa.
- ⑦ Play back: Click here for video play back when have SD card in the monitor and Recording function on APP is on.
- ⑧ Pictures: The snapshot pictures or recorded videos while talking or monitoring saved here. (only for Android smartphone, for IOS phone, it saved in Camera on smartphone.)
- ⑨ Monitor Unlock: Unlock the lock that connected to the indoor monitor while talking or monitoring. (only for the indoor monitor has monitor relay function).
- ⑩ Video Recording: Start record video while talking or monitoring.
- ⑪ Full Screen: display the image full screen.
- ⑫ Settings



Pic 2.4.3.8

- Available to, modify the device name.
- Available to view the device info.
- Available to set the talking mode as single model or double mode at basic settings (Default as single mode).
- Have Saving Settings if indoor monitor has SD card. Can view the storage capacity, the event records when the video recording mode is on.
- Available to share the device to other smartphone.
- Delete the device if need to unbin the device from the smartphone.

### Sharing with other phone user:

There are two ways to share your device to other phone users:

- Enter App----All devices list-----press the device you want to share-----press monitoring mode and press top right corner setting-----Share device-----Add sharing-----input region/ account and done.  
(notice: user App without unlock function, only Admin App with unlock function)
- Enter App-----All devices list-----Me-----Home Management-----Create a home-----Enter home name-----Add member-----App account-----input name/region/account and save.

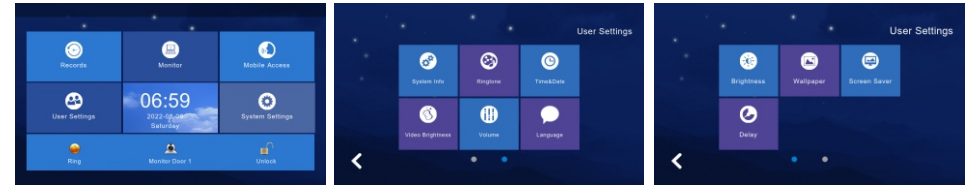
### NOTE:

- All member in same device can get the message once visitor call from door station.
- Admin can add or move all members from App, Enter “Me”-----Home Management-----remove member as you want.

## 2.5 User Settings

Click to enter “User Settings Interface”.

 : Click “One Circle Button” to enter the next user settings page.



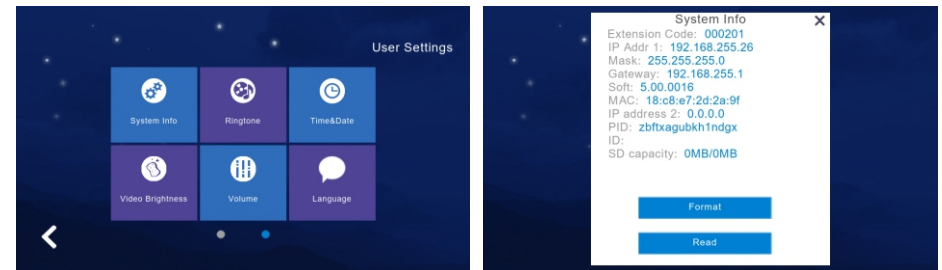
Pic 2.5

### 2.5.1 System Info

Click “System Info” to know the details: IP address, Extension Code , Mask, Network Configuration Version, Software Version. As picture 2.5.1.

Format: Format SD card.

Read: Insert the SD card which is with the ID file into the monitor, click “read” to get the ID number.

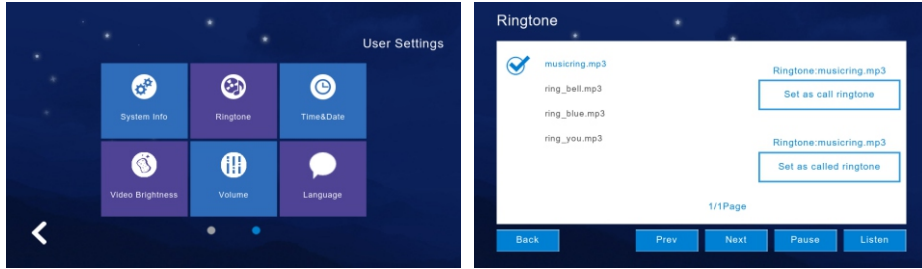


Pic 2.5.1

### 2.5.2 Ringtone Setting

Support to set the ringtone when the indoor monitor call other device or is called by other device.

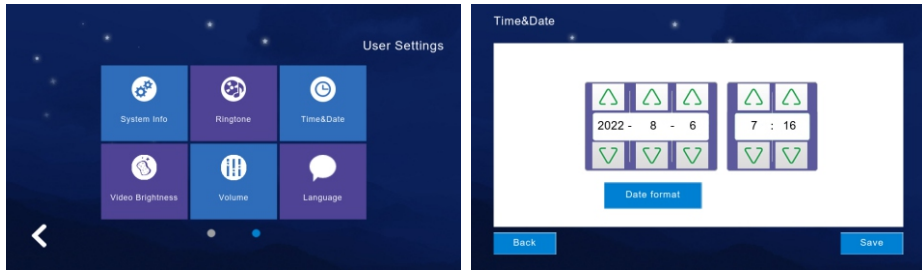
- Available to select the ringtone in “ring” folder from SD Card.
- When you selected one ringtone and click “Listen” for the audition.



Pic 2.5.2

### 2.5.3 Time & Date Setting

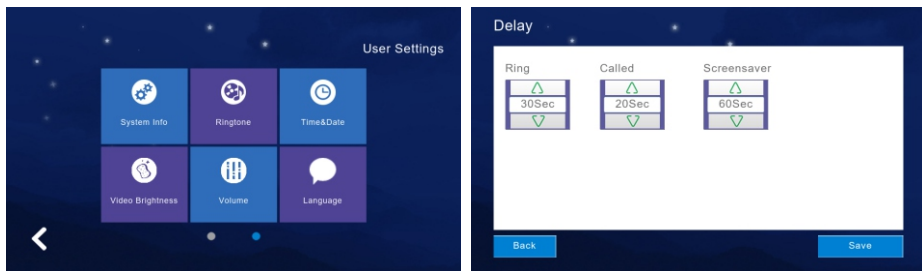
- 1) 24-hour time system as the default and available to set Year / Month / Day / Hour / Minute, Save after setting.
- 2) Format switch: switch the Date format as Y/M/D, D/M/Y, M/D/Y.



Pic 2.5.3

### 2.5.4 Video Brightness

Adjust video’s brightness, contrast, saturation, hue.



Pic 2.5.4

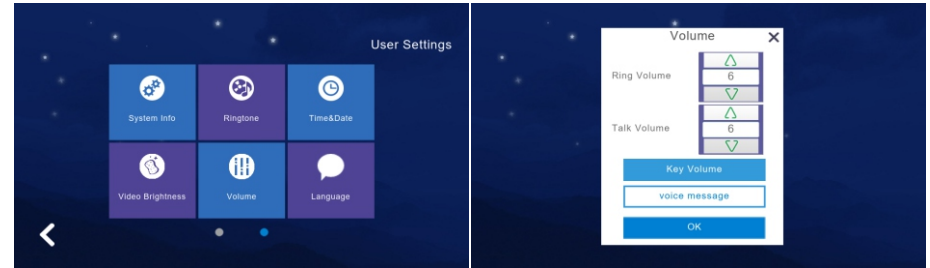
### 2.5.5 Volume Setting

- 1) Click “Volume” to enter the setting and the below button is to adjust the volume of “Ringtone / Touch Key or Talk”, and there would be the audition after you adjusted the volume ,that need to Click “OK” to set successfully if you adjusted the volume.

- : Increase the volume (+)
- : Decrease the volume (-)

Note: “6” as the default volume and the volume range is “0-15”.

- 2) Key tone switch: turn on or off the key tone, click it to turn dark blue means turn on.
- 3) Voice Message On/Off: Remind to leave messages when not answered the call from the visitor at outdoor sation. Default is off, click to dark blue is on.



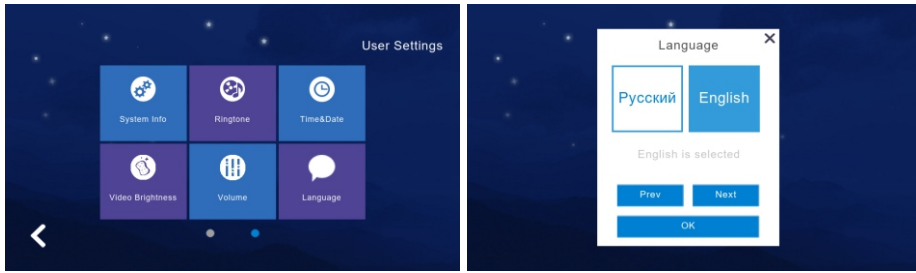
Pic 2.5.5

### 2.5.6 Language Setting

Click “Language” to enter the setting, and it is available for Russian, English, Chinese, Spanish, Turkish, Portuguese, Dutch, French, Italian, Bulgarian. When selected one language and need to click “OK” to set successfully.

- “Prev”: Page Up
- “Next”: Page Down







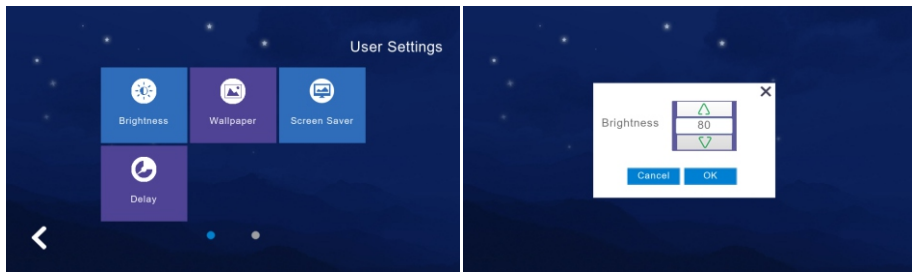
Pic 2.5.6

## 2.5.7 Screen Brightness Setting

Click “Brightness” to enter the setting, then,adjust the brightness accordingly and need to Click “OK” to set successfully if you adjusted the brightness.

-  : Increase the brightness (+)
-  : Decrease the brightness (-)

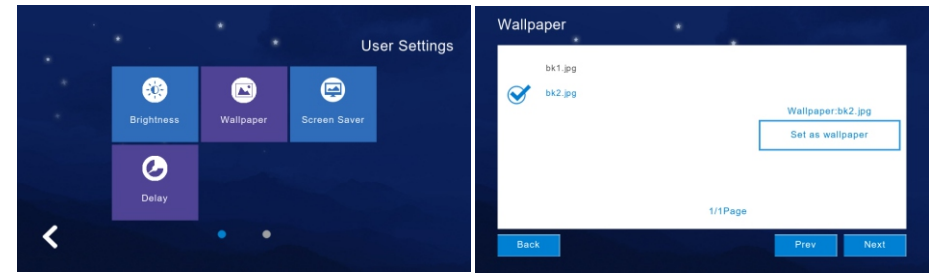
**Note:** “60” as the default screen brightness and the brightness range is “1-100”.



Pic 2.5.7

## 2.5.8 Wallpaper Setting

Click “Wallpaper” to enter the setting, and when selected one picture, click “Set as wallpaper” to set successfully. And it is available for selecting the picture in “Wallpaper” folder from SD Card.



Pic 2.5.8

## 2.5.9 Screen Saver Setting

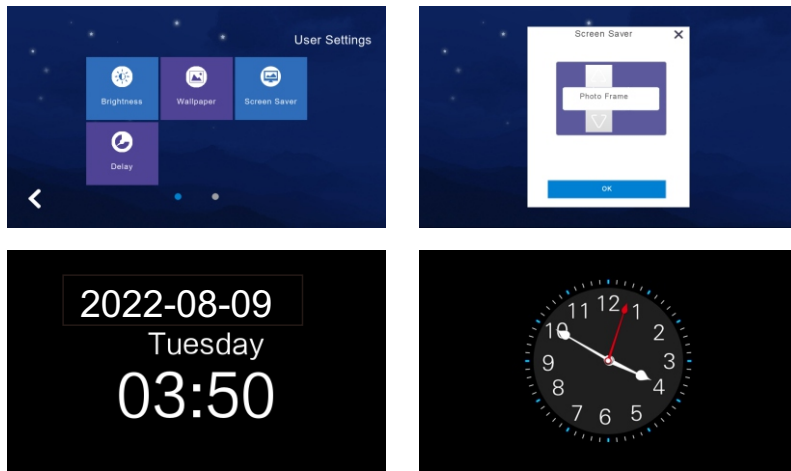
Click “Screen Saver” to enter the setting that is including Click “Delay” to enter the setting that is including “Black”, “Time”, “Clock”. It will be in “Screen Saver” status without any operation for 60 seconds automatically. And when you selected one type and need to click “OK” to set successfully. Screen saver will turn off if without any operating in 60s.

- “ Black ” is stand for “ Black Screen Saver ”.
- “ Time ” is stand for “ Time Screen Saver”.
- “ Clock” is stand for “ Clock Screen Saver”.

*Note: The system default in “Black Screen” status would be started automatically from 0:00 to 06:00 am.*

Picture screensaver:

1. Carousel the pictures in the SD card in the standby mode, after carousel one hour the screen will be turned off.
2. User need to create a folder named in “screensaver” in SD card, and put the pictures into the folder.
3. The pictures put in “screensaver” has below requirements:
  - Picture format is JPG
  - Picture resolution ≤ 1920\*1080
  - Picture file size ≤ 3 MB



Pic 2.5.9

### 2.5.10 Delay Setting

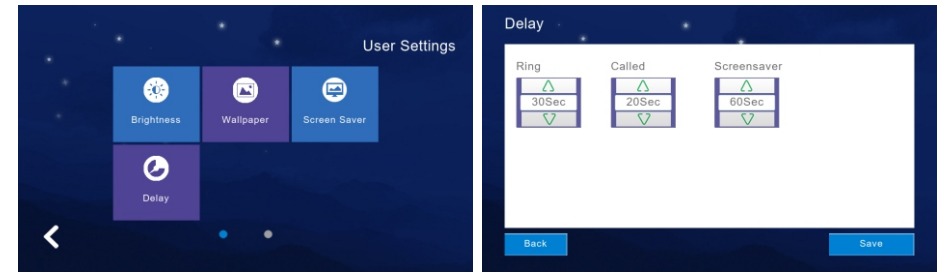
There are 3 kinds of settings in the delay settings, which are:

**Ringing time** (can be set to 5-90 seconds, the default value is 30 seconds): the ringing time when the indoor monitor is called.

**No ring duration** (can be set to 0-60 seconds, the default value is 0 seconds): when an indoor monitor is called, which indicates no ring duration. This is the time from the end of the ringing of the indoor monitor to the end of the hanging un. During this period, the bell does not ring, but still can answer the hanging up normally.

**Screen saver duration** (can be set to 30, 60, 90 seconds, the default value is 60 seconds): when no operation is performed on the indoor monitor until the screen saver is entered.


After setting, click the save button to save the settings.

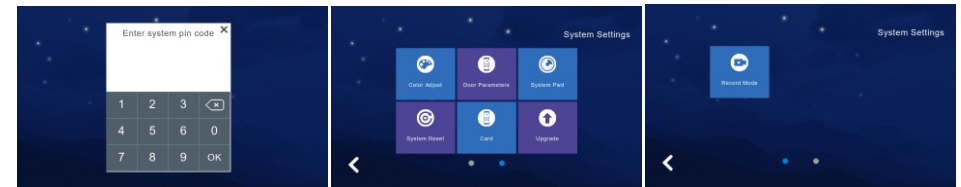


Pic 2.5.10

## 2.6 System Settings

Click “System Settings” in Main GUI and input the system pin code “666 666” to enter the system settings.

 : Click “One Circle Button” to enter the next system settings page.

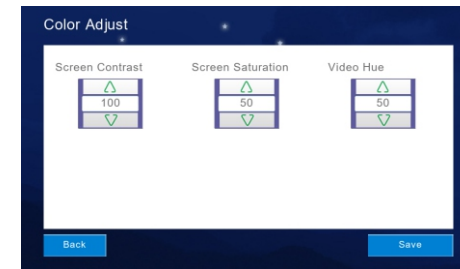


Pic 2.6

### 2.6.1 Color Adjustment

You can set the contrast, saturation, and video color of the screen. The parameter setting range is 1~100. After setting, click Save.

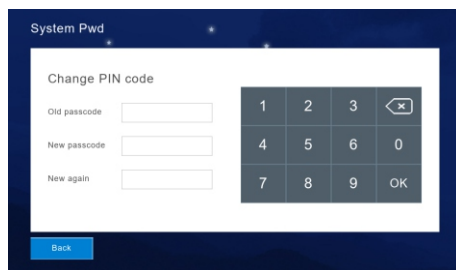
Click “One Circle Button” to enter the next system settings page firstly. “Color Adjust” is including Screen Contrast, Screen Saturation, Video Hue, Video Brightness, Video Contrast, Video Saturation. And need to Click “Save” to set successfully.



Pic 2.6.1

## 2.6.2 System Password Setting

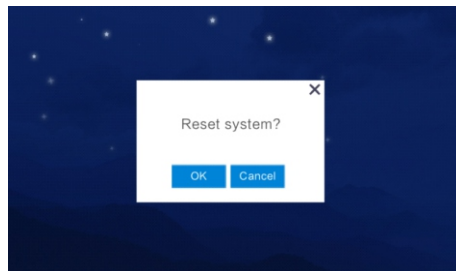
Click “System Password” to enter the setting menu that input the old passcode “666 666” firstly. And new passcode need to input twice, then, click “OK” to set successfully.



Pic 2.6.2

## 2.6.3 System Reset

Click “System Reset” to have a notification whether “Reset system”. And click “OK” to reset the system successfully that clean all settings what you changed and records in the monitor, then, it will be the Factory Settings Default. Click “Cancel” will return the System Settings Menu. As picture 2.6.3.



Pic 2.6.3

## 2.6.4 Software Upgrade

Caution: Don't shut off power during the software is upgrading or the indoor monitor will not work any more.

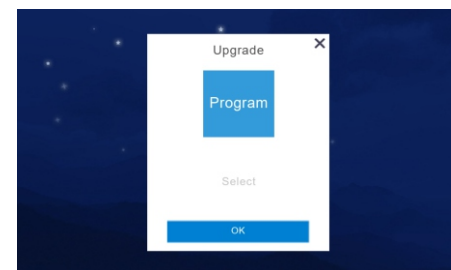
Support SD Card Software Upgrade that need to put “image.dd” and “NetCfg.dat” in related SD Card.

Assembly SD Card in the indoor monitor and shut off power to reset the indoor

monitor accordingly. Then, enter “Upgrade” menu as the above instructions. Select “NetCfg” or “Program” to upgrade the Program and Network Configuration separately. Select “NetCfg” firstly and click “OK” to upgrade the Network Configuration, it will reboot automatically to be upgrading successfully. Select “Program” firstly and click “OK” to upgrade the Program, it will reboot automatically to be upgrading successfully.

### Support SD card upgrade:

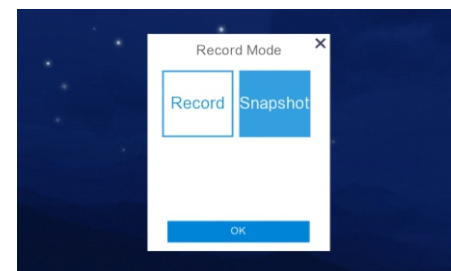
first put the program iMage.dd and network configuration table netcfg.dat into the SD card. Insert the SD card into the indoor monitor and restart the power off. Enter the “System Settings” and enter the initial password to “666666”. Select upgrade the software “program”. Select “Program” click the “OK” button to start upgrade. After the upgrade is upgraded to complete the device restart, complete the “Program” upgrade.



Pic 2.6.4

## 2.6.5 Record Mode Setting

“Record Mode” is including Record and Snapshot, to set the outdoor station record mode when the householder missed the call or answered the call. Record is “take the video of visitor” and Snapshot is “take the photo of visitor”.

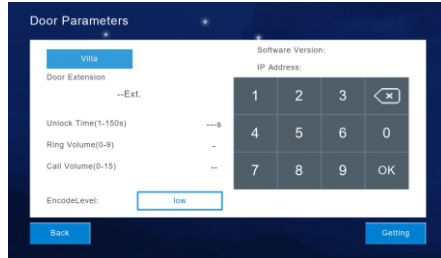


Pic 2.6.7

## 2.6.6 Outdoor Station Parameters Resetting

Support to review and change High level and Villa Outdoor Station Parameters.

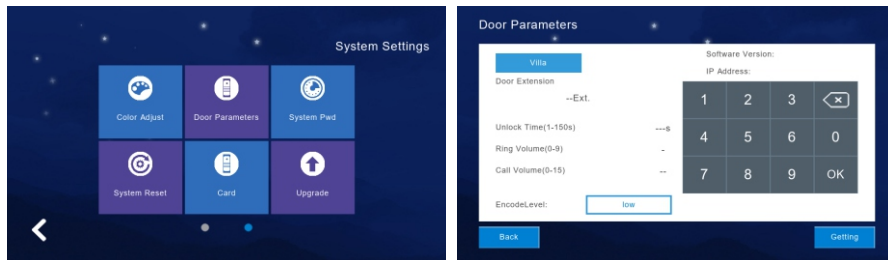
- 1). Input "Door Extension Number" and click "OK" to have related door extension parameters such as "Unlock Time", "Ring Volume", "Call Volume", "Motion Sensitivity", "Software Version".
- 2). Support to change the parameters, need to delete the previous parameters and input new ones. Then, click "OK" to change successfully.



Pic 2.6.8

## 2.6.7 Card

- 1). Enter the room number of the outdoor station first, and default to 01.
- 2). Click Mode +, the door opportunity will prompt DiDi twice.



Pic 2.6.9

## 3 Technical Parameter

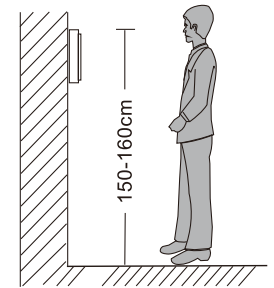
- Display: 7" TFT LCD(color)
- Resolution: 1024\*600
- Vibration: Bell  $\geq 70$ dB
- Power: DC
- Current:  $< 350$ mA
- Working temperature:  $-20^{\circ}\text{C} \sim +70^{\circ}\text{C}$
- Max power consumption:  $< 5$ W
- Installation: surface mounted

## 4 Install The Indoor Monitor

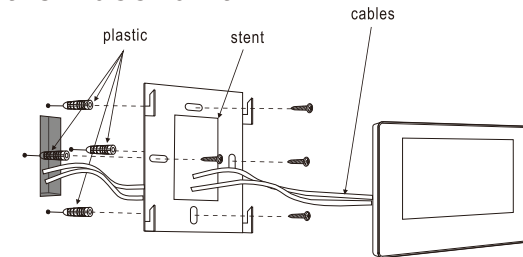


**Note:**

- Please be far from the devices with intense radiation: TV, DVR, etc.
- Do not disassemble privately to avoid the electric shock.
- Do not drop, shake or knock the device, otherwise will damage the elements.
- Choose the best position to install, the horizontal view is 150cm.
- Please power down before installation.
- Keep at a distance of more than 30cm with AC power to avoid interference.
- Away from the water, magnetic field and chemicals.



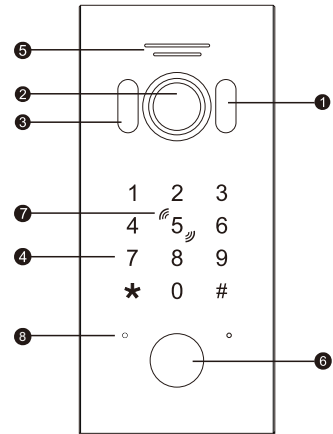
### How to install the indoor unit



# **OPERATION INSTRUCTION**

**VM-100WC  
WIRELESS VIDEO INTERCOM  
DOOR STATION**

## SPECIFICATIONS



1	White light LED
2	Camera
3	Photosensitive resistance
4	Keypad
5	Speaker
6	Call button
7	Card area
8	Microphone

## PARAMETERS

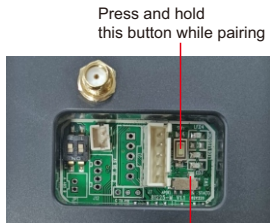
1. View angle: 120°
2. Resolution: 1.3MP
3. Night vision: White light LED(120°)
4. Working current; voltage: 12~15V DC input;  
Working current standby $\leq$ 150mA, Working $\leq$ 300mA
5. Working environment:  
Working temperature: -20°C~ +50°C  
Relative humidity:  $\leq$ 95%

## PARING WAY

1. After the indoor monitor and outdoor station are powered on, dial the button of outdoor station to the right (as shown in pic 1)
2. Long press the white button on the back of the outdoor station,
3. Long press link button of indoor monitor at the same time (as shown in pic 2)

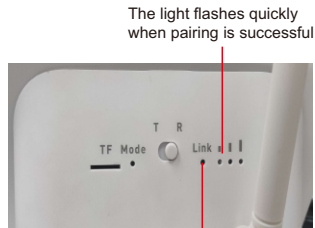
### **i** NOTEICE:

*The indoor monitor dial code should be dialed to R. When the signal light on the right side of the indoor monitor link flashes quickly, release the indoor monitor and outdoor station buttons.*



Pic 1

Dial this button to the right side



Pic 2

Press and hold this button while pairing

2

## FUNCTIONS

Include RFID card + access controller + video and audio intercom. This product can be used for factories, homes, offices, banks and communities, etc. Keep your property safe like a bodyguard.

- (1). The product includes a digital keypad module and a card swiping module. The keypad module is used for supervisor mode operation. The card swiping module is used to manage the operation of user cards.
- (2). Compensation light and LED button light have photosensitive function. During the day, the white compensation light and LED key light will not light up. At night, the LED button light is always on; when calling at night, the white compensation light is automatically turned on to fill in the light.

## ADMINISTRATOR OPERATION

### 1. The default settings are as follows

The initial administrator password is 999999. Initial public unlock password is 123456.

The default door opening method is card opening.

The default unlock time is 1 second.

The safe mode is off by default.

The public unlock password is enabled by default.

### 2. Enter the administrator operation mode:

**\* + Administrator Password + #**

In standby mode, press \* + administrator password (initial administrator password is 999999) + # to enter the administrator operation mode. At this time, the device Bi Bi-beeps twice and the call button flashes slowly, means entered administrator operation mode successfully.

3

In setting progress, if input is incorrect or the setting fails, the device will Bi Bi Bi beeps four times. After setting done, if no more operations, the device will Bi Bi Bi beeps three times after 30 seconds, means automatically exit administrator operation mode.

**i NOTEICE:**

*Press \* button during any of the following settings can return to the previous level or exit the operating mode.*

## 2.1 Modify administrator password, public unlock password and reset the device.

### 2.1.1 Public unlock password

**0 + 11+ # +New Password + # +Confirm Password+ #**

Under administrator operation mode, press 0 (Call button light flash fast) +11 + # NNNNNN (six digits)+ # + NNNNNN (input password again) + #, the device Bi Bi beeps twice means set successfully.

#### How to use the public unlock password:

Input public unlock password on the keypad + #, if password correct then door will be unlocked.

### 2.1.2 Administrator password

Under administrator operation mode, press 0 (Call button light flash fast) +77 + # NNNNNN (six digits)+ # +NNNNNN (input password again)+ #, the device Bi Bi beeps twice means set successfully.

### 2.1.3 Reset

Under administrator operation mode, press 0 (Call button light flash fast) +99 + # (Bi beeps one time), device restored to factory setting.

**i NOTEICE:**

*Reset the device will not delete user card, user password info and master card.*

## 2.2 Setup unlock mode

### 2.2.1 3 + 00+ #

Under administrator operation mode, press 3 (Call button light flash fast) +00 + # (Bi Bi beeps twice) -----The card unlock only.

### 2.2.2 3 + 01+ #

Under administrator operation mode, press 3 (Call button light flash fast) + 01+ # (Bi Bi beeps twice)-----The card or password unlock.

### 2.2.3 3 + 02+ #

Under administrator operation mode, press 3(Call button light flash fast) + 02 +# (Bi Bi beeps twice)-----The card and password unlock.

## 2.3 Modify the unlock time of relay

Under administrator operation mode, press 4 (Call button light flash fast) + 000~150(unlock time) + # (Bi Bi beeps twice means set successfully)

### 2.3.1 4 + 002 + #

Under administrator operation mode, press 4 (Call button light flash fast) + 002 + # (Bi Bi beeps twice means set successfully). Unlock time set to 2s, and so on.

### 2.3.2 4 + 000 + #

Under administrator operation mode, press 4 (Call button light flash fast) + 000 + # (Bi Bi beeps twice means set successfully). This setting means first swipe card is on; swipe the card again is off.

## 2.4 Safety mode setup

### 2.4.1 5 + 00 + #

Under administrator operation mode, press 5 (Call button light flash fast) + 00 + # (Bi Bi beeps twice )-----Turn off safety mode.



### 2.4.2 5 + 01 + #

Under administrator operation mode, press 5 (Call button light flash fast) + 01 + # (Bi Bi beeps twice) -----Locked mode. (Means within 5 minutes, continue use wrong card or incorrect password for 10 times, the device will be locked out for 2 minutes, and automatically call indoor monitor. During this two minutes card and password won't work.

### 2.4.3 5 + 02 + #

Under administrator operation mode, press 5 (Call button light flash fast) + 02 + # (( Bi Bi beeps twice ) ) -----Alarm mode ( Means within 5 minutes, continue to use wrong card or incorrect password for 10 times, the built in buzzer will alarm for 1 minute, and automatically call indoor monitor.

## 2.5 Enable and disable public unlock password

### 2.5.1 6 + 00 + #

Under administrator operation mode, press 6 (Call button light flash fast) +00+ # (Bi Bi beeps twice) ----- Disable public unlock password.

### 2.5.2 6 + 01 + #

Under administrator operation mode, press 6 (Call button light flash fast) +01+ # (Bi Bi beeps twice ) ----- Enable public unlock password.

## 2.6 Add master card

### 2.6.1 7 + #

Under administrator operation mode, press 7 (Call button light flash fast)+ # (Bi Bi beeps twice ) to enter add master card mode, the first card registered in this mode will be Add Card Master Card, second card registered in this mode will be Delete Card Master Card. After swipe two cards, administrator operation mode will be exited automatically.

### NOTEICE:

*Only two pcs master card allowed, both master cards are capable to unlock. New added master card will replace the original master card.*

### 2.6.2 8 + 01~08#

Under administrator operation mode, press 8 (call button light flashes quickly) + 01~08 (volume from small to large) + # (Bi Bi beeps twice) ----- switch the ringing volume of the outdoor station.

## 2.7 Switch language

### 9 + 01 + #

Under administrator operation mode, press 9 (call button light flashes quickly) + 01 (language sequence) + # (Bi Bi beeps twice) ----- to switch the language of the outdoor station.

(00=Russian 01=English 02=Chinese 03=Spanish 04=Turkish 05=Portuguese 06=German 07=French 08=Italian 9=Bulgarian 10=Persian)

## 2.8 Upgrade by SD card

Upgrade the outdoor station program at the indoor monitor.

- (1). Change the program file name to: flash\_bk\_8852\_app.bin.
- (2). Put the file in the root directory of the SD card.
- (3). The outdoor station and indoor monitor must be paired successfully first.
- (4). Put the card in and out of the indoor monitor, click the system setting on the indoor monitor, enter the password: 135792 to enter the program upgrade page.
- (5). Click program upgrade and wait for the outdoor station to restart to upgrade successfully.

## MANAGE USER CARD

There are two master cards, one is Add Master Card, another one is Delete Card Master Card (For modification of master card please refers to administrator operation point 6). User card can only managed by master card.

### NOTEICE:

- (1). Master card can't be deleted, it can only be replaced by new adding master card.
- (2). The master card and user card registered in door station 1 can't unlock other door station. If user wants the card to unlock every door, user should register the card at every door station.

## 1 Add user card

- (1). In standby mode, swipe add card master card 3 times within 15 seconds, call button light flash fast means entered add user card mode successfully.
- (2). Swipe the unregistered blank card in RFID read area, when outdoor station buzzer with "Bi Bi" sound means this card is added successfully.
- (3). If all user cards have been added, or user want to stop adding, just swipe add card master to end the add user card operation. (If no more operations, it will exit add user card mode automatically after 30s), at this time the call button back light always on and the device returns to the standby state.

## 2. Delete user card

### 2.1 Delete part of user card

- (1). In standby mode, swipe delete card master card 3 times within 15 seconds, call button light flash fast means entered delete user card mode successfully.
- (2). Swipe a registered user card on RFID read area, when buzzer with "Bi Bi" sound means this card is deleted successfully. mode successfully.

- (3). If all user cards have been deleted, or user want to stop delete card, just swipe delete card or keep press the call button to exit delete user card mode. (If no more operations, it will exit delete user card mode automatically after 30s), at this time the call button back light always on and the device returns to the standby state.

### 2.2 Delete all user cards

- (1). In standby mode , swipe delete card master card 3 times within 15 seconds, call button light flash fast means entered delete user card mode successfully.
- (2). Under delete user card mode, swipe add card user card, buzzer with 7 times BI BI..... then delete all user cards and back to standby mode.

## USER OPERATION

### 1. User modify password by card:

\* + User Card + old Password + # + New Password + # + Confirm Password + #

In standby mode, press \* + swipe card +old password (default user password 0000) + # + NNNN (4 digits as new password) + # + NNNN (Input password again) +#, if no mistake on operation, then the video doorbell will beep Bi one time, means password modified successfully.

### NOTEICE:

*Default user password can only use for ffirst time modify user password, it can't be used for unlock.*

### 2. Card access to unlock

In standby mode, swipe valid registered card at the RFID read area, can unlock the door and hear the indicate voice "The door is open, please come in".

## 2.1 Card or password unlock

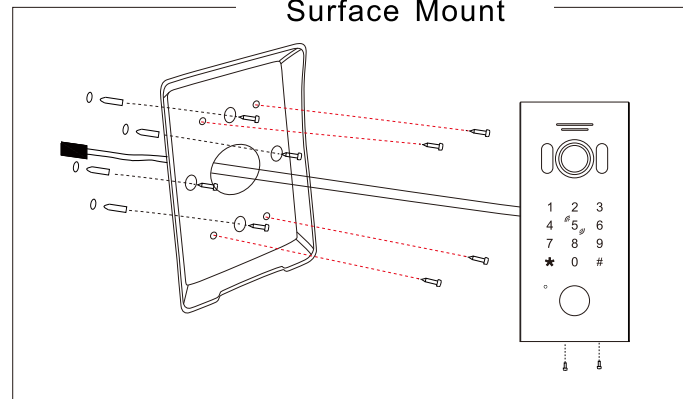
- (1). In standby mode, swipe valid registered card at the RFID read area, can unlock the door and hear the indicate voice "The door is open, please come in".
- (2). In standby mode, input 4 digit user password at keypad + #, if password is right then unlock successfully and hear the indicate voice "The door is open, please come in".

## 2.2 Card and password unlock

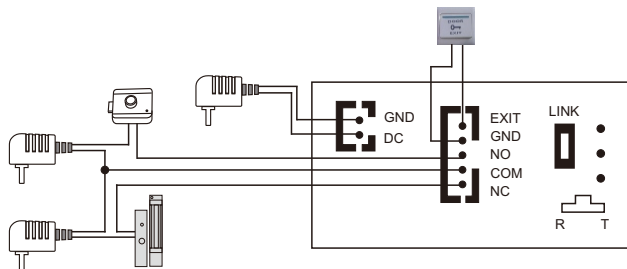
In standby mode, swipe valid registered card at the RFID read area, input 4 digit user password at keypad + #, if both card and password are valid can unlock the door and hear the indicate voice "The door is open, please come in"

## INSTALLATION DIAGRAM

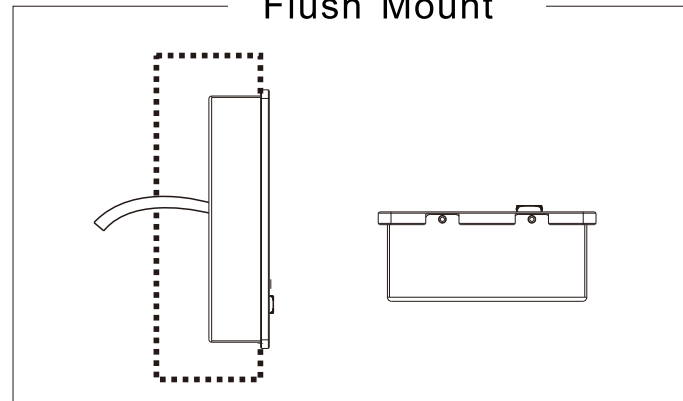
### Surface Mount



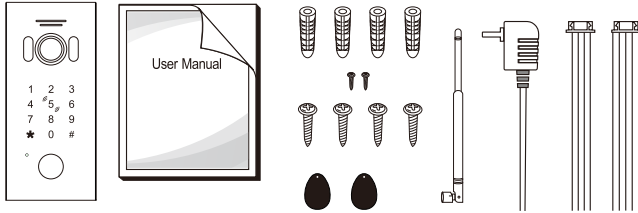
## WIRING DIAGRAM



### Flush Mount

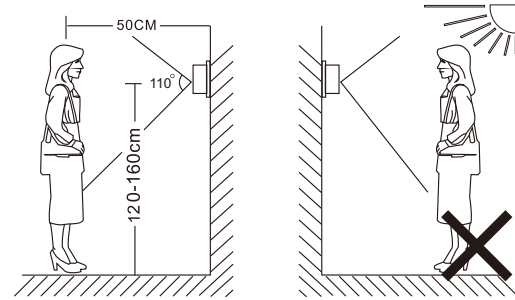


## ACCESSORIES



- Outdoor station ----- 1PCS
- Plastic Anchors ----- 4PCS
- Screws ----- 6PCS
- 4 pin line ----- 1PCS
- 5 pin line ----- 1PCS
- Antenna ----- 1PCS
- IC card ----- 2PCS
- User manual ----- 1PCS
- Power adapter ----- 1PCS

## INSTALLATION PROCESS OF DOOR STATION



### ⚠ NOTE:

- Avoid installation of the device near strong radiation e.g. AC motor and lift.
- Maintenance should be complied with qualified technician.
- Avoid hard shake, beating and collision, otherwise the internal exact components maybe be damaged.
- Do not expose the outdoor camera under strong light or sunshine.
- Do not install the outdoor camera in the environment e.g. direct sunlight, contact rain, high temperature, high humidity, full of dust and chemistry corrosive.
- Select the most suitable position where the camera is located at user's eye level.
- Switch off power supply before installation.
- Keep more than 30cm away from AC power supply to avoid external interference.
- Keep it away from the water and magnetic field.