



**1000
MILE**[®]
ESTABLISHED 1990

SOCK COLLECTION 2024

www.1000mile.co.uk

[f 1000MileSportswear](#) [t @1000MileSocks](#) [i @1000MileSocks](#)



DOUBLE LAYER

PADDED DOUBLE LAYER

PADDED SINGLE LAYER

VALUE TWIN PACKS

SOCKET

1548
Trainer Liner
PAGE 20



2023
Fusion Socklet
PAGE 23



2263
Run Socklet
PAGE 26



ANKLET

2026
Fusion Anklet
PAGE 22



2261
Run Anklet
PAGE 27



CREW LENGTH

1111
The Original
PAGE 19



1950
All Terrain
PAGE 24



2029
Fusion
PAGE 21



2265
Trail
PAGE 25



CALF LENGTH

2005
Lightweight
Cricket
PAGE 29



2006
Cricket
PAGE 28



SPORTS SOCK IDENTIFIER

CREW LENGTH

1147
Tactel
Liner
PAGE 31



1950
All
Terrain
PAGE 33



1998
Approach
PAGE 32



2029
Fusion
PAGE 22



WALKING SOCK IDENTIFIER

2265
Trail
PAGE 38



2270
Trek
PAGE 39



CALF LENGTH

3195
Lightweight
Walk
PAGE 34



1821
Classic
Combat
PAGE 36



2032
Fusion Walk
PAGE 35



2230
3 Season Walk
PAGE 37



2275
Walk
PAGE 40



2276
Combat
PAGE 41





We have been working hard at 1000 Mile, improving our overall **sustainability** profile. This includes both the materials in our products and packaging: using more recycled, more ecological or just less materials, and shipping it as little as we can – as well as minimising the conversion process and energy inputs to arrive at finished product. While we recognise our whole industry is only at the beginning of the path, we want to continue to hit milestone markers in our brands' evolution throughout 2024 and beyond.

The 1000 Mile Recycled Range, launched in 2021, is being constantly expanded: introducing one of our best-selling sock designs for each category of user and sock style (double and single layer, for runners, for walkers, shoe and boot socks).

DOUBLE LAYER

PADDED DOUBLE LAYER

PADDED SINGLE LAYER

VALUE TWIN PACKS

SOCKETLET	2011 Lite Anklet PAGE 06	2024 Fusion Socketlet PAGE 07	1467 Activ Socketlet PAGE 08	2262 Run Anklet PAGE 10	
	2011 Lite Anklet PAGE 06		1478 Activ QTR PAGE 09		
ANKLET					
CREW LENGTH	1148 Liner Sock PAGE 12	2033 Fusion Walk Sock PAGE 15	RECYCLED SOCK RANGE IDENTIFIER	2266 Trail PAGE 11	2271 Trek PAGE 16
	1999 Approach Sock PAGE 13				
CALF LENGTH	3196 Lightweight Walk Sock PAGE 14			2277 Walk Sock PAGE 17	

THE 1000 MILE RECYCLED RANGE

Key to the range are high percentages of REPREEVE® recycled materials in the fabric blend: REPREEVE® poly yarns and high quality REPREEVE® recycled Nylon 6.



REPREEVE® **poly yarns** are made from 100% recycled materials, primarily plastic bottles, creating a reprieve for the planet by reducing energy, water and greenhouse gases. REPREEVE® is one of the most certified, earth-friendly fibres available in the world, currently approaching 25 billion plastic bottles re-purposed.

REPREEVE® recycled **Nylon 6** reformulated from pre-consumer fibre waste, and opens up a world of possibilities in the use of eco-friendly, high quality nylon materials. For every 1lb of REPREEVE® Nylon 6, 77,000 BTU's* are conserved, equivalent to 0.6 gallons of petrol. (*British Thermal Units)

REPREEVE® fabrics are certified by SCS Global Services (SCS) for recycled content claims.

REPREEVE® is a trademark of Unifi, Inc.



TECHNICAL INNOVATIONS

1000 Mile is best known for its double layer anti-blister system. The 'sock within a sock' design was introduced to the UK with the very first Original 1000 Mile Sock.

The inner layer stays with the foot as the outer layer moves with the shoe, eliminating friction on the skin and protecting your feet from blisters – designed with the purpose of protecting not just athletes but also people with serious health issues like diabetes where foot health is essential. Trusted and worn all over the world, our double layer socks offer a **BLISTER-FREE GUARANTEE**

THE GUARANTEE

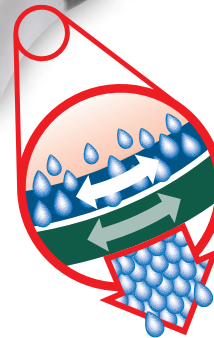
DOUBLE LAYER CONSTRUCTION eliminates friction between shoe and sock, thus reducing friction between sock and foot. The skin should therefore not be rubbed by the sock, meaning no wearout for 1000 miles of use and no blisters.

Money back or replacement if, within one year from date of purchase, either you experience blisters or the socks wear out within 1000 miles, provided care instructions have been followed and socks are returned with original receipt. Limited to one pair per purchase. [Please note: the guarantee does NOT apply to single layer socks from 1000 Mile]

HEEL POWER fabric technology grips the heel firmly in place, so no slippage! This is now a feature on the Ultimate Tactel® Sock, Anklet and Trainer Liner; Lightweight Walk Sock, Approach Sock and many others.

FUSION SYSTEM: The 1000 Mile Fusion sock is the first sock to offer padded zones on the heel and toe for protection together with the double layer system for reduced friction.

BLISTER-FREE GUARANTEE



HEEL POWER

The fusion system can be found in our Fusion, Fusion Anklet and Fusion Socklet sports socks, and the Fusion Walk Sock.

PADDED ACHILLES HEEL: We have added a padded area to the heel of our Fusion range for additional support and to help protect the achilles. The warmth provided by the padding keeps the tendon supple, increasing the blood flow, reducing swelling and aiding recovery.

TOP VENTING: To help keep the foot cool we have developed 'top venting' with air flow channels on many of our styles.

FLAT TOE SEAM: We use a Lin Toe® system to provide a completely flat toe seam on our All Terrain and 3 & 4 Season socks. The Lin Toe® seam is a linking system on the outside of the sock instead of the traditional sewn closure.

MATERIALS A dynamic speciality fibre, TACTEL® creates fabric that is soft, supple smooth, breathable and lightweight. According to rigid testing, Tactel® fibre is at least twice as soft and 20% lighter than most other fibres. It also dries eight times faster than cotton. In addition to being soft and lightweight, Tactel® fibre is strong. The inherent strength of Tactel® fibre enables the production of fabrics that are three times as strong as those made with natural fibres. Most 1000 Mile double layer socks have a 100% Tactel® inner.

Tactel®

MERINO WOOL is one of softest types of wool available and is perfect for regulating body temperature and moisture. Merino yarns can be found in many styles from our range.

SIZE AND FITTING

Almost all socks in the 1000 Mile range come in both men's and ladies' fittings, as indicated by the colour coded stitching around the toe seam:



WOMEN'S FOOT SIZE	WOMEN'S FOOT SIZE	MEN'S FOOT SIZE	MEN'S FOOT SIZE	MEN'S FOOT SIZE
S (3-5½)	M (6-8½)	M (6-8½)	L (9-11½)	XL (12-14)
BLUE	LILAC	GREEN	RED	ROYAL
LADIES' FIT		MEN'S FIT		
AAA - B		D - 4 E		

Leading the way

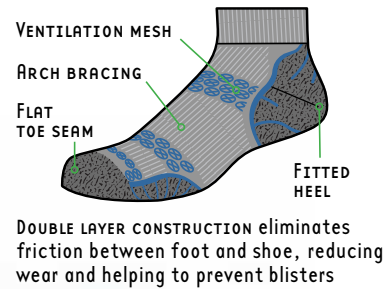
in innovative performance and technical socks for running, walking, sports and foot health, the 1000 Mile range has been building its solid reputation and brand recognition since 1990.

**1000
MILE**
ESTABLISHED 1990



Lite Anklet 2011

The successor to the Ultimate Anklet, the 1000 MILE LITE ANKLET combines everything we have learned in over 30 years making double-layer running socks, with the latest recycled materials from REPPEVE®. The unique combination of fibres means the inner layer helps wick moisture from the skin and keep the foot dry, while the venting and breathable knit pattern on the outer layer helps maintain a comfortable temperature. The arch brace offers additional support. Covered by our unique Blister Free Guarantee, the double layer construction helps eliminate friction between the foot and shoe, reducing wear and helping to prevent blisters.



silver/purple
2011P
LS, LM



OUTER LAYER:
46% REPPEVE® Nylon 6
33% REPPEVE® polyester
18% polyamide
3% elastane
INNER LAYER:
99% REPPEVE® Nylon 6
1% elastane



OTHER COLOURWAYS

silver/royal blue
2011RY
M-XL, LS, LM



silver/red
2011R
M, L

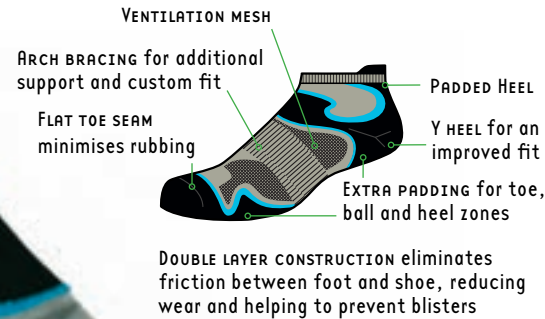


Toe seam stitch colour denotes size and fit:

MEN'S FIT D-4E		
M	6-8½ (39-42.5)	GREEN
L	9-11½ (43-46.5)	RED
XL	12-14 (47-49)	ROYAL
LADIES' FIT AAA-B		
LS	3-5½ (35.5-38.5)	BLUE
LM	6-8½ (39-42.5)	LILAC

Fusion Socklet 2024

Conventional sock wisdom dictates that you can either have padding for protection and comfort, or two layers for reduced friction. Padded socks are thick, double layer socks are thin. The 1000 MILE FUSION SOCKLET breaks that mould with innovative design and material technology, including the latest REPREVE® recycled yarns, to provide a sock that offers everything: the 1000 Mile double layer sock's blister-free guarantee, but with padded comfort and protection, including achilles tendon padding. Knitted to a trainer liner length profile, for those who prefer a 'no sock' look.



silver/kingfisher
2024K
M, L, LS, LM



OTHER COLOURWAYS

silver/orange
2024O
M-XL



silver/pink
2024P
LS, LM



Toe seam stitch colour denotes size and fit:

MEN'S FIT D-4E

M 6-8½ (39-42.5) **GREEN**

L 9-11½ (43-46.5) **RED**

XL 12-14 (47-49) **ROYAL**

LADIES' FIT AAA-B

LS 3-5½ (35.5-38.5) **BLUE**

LM 6-8½ (39-42.5) **LILAC**

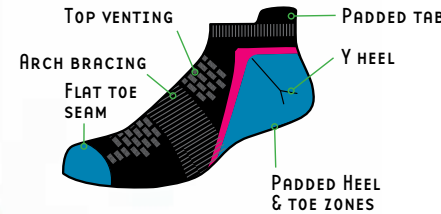


OUTER LAYER:
64% REPREVE® polyester
20% Lycra®
10% nylon
6% elastane
INNER LAYER:
100% REPREVE® polyester



Activ Socklet 1467

The perfect sock for those with an active lifestyle. Knitted to a trainer liner length profile for those who prefer a 'no sock' look, the 1000 MILE ACTIV SOCKLET is designed to provide support and promote comfort during even the most demanding sports activities. Specially shaped to ensure the best fit whilst the arch bracing and Y heel give firm grip and no-slip stability. The super soft yarns, including the latest REP REVE® recycled yarns, and flat toe seam reduce irritation on the skin whilst the padded heel, toe and achilles tab offer cushioned protection. Top ventilation panels allow the foot to breathe and maintain an even temperature.



silver/pink/teal
1467S
LS, LM



OTHER COLOURWAYS

black/pink/teal
1467B
M-XL



80% REP REVE® polyester
18% polyamide
2% elastane

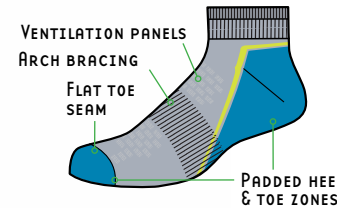


Toe seam stitch colour denotes size and fit:

MEN'S FIT D-4E		
M	6-8½ (39-42.5)	GREEN
L	9-11½ (43-46.5)	RED
XL	12-14 (47-49)	ROYAL
LADIES' FIT AAA-B		
LS	3-5½ (35.5-38.5)	BLUE
LM	6-8½ (39-42.5)	LILAC

Activ QTR 1478

The perfect sock for those with an active lifestyle. The 1000 MILE ACTIV QTR sock is designed to provide maximum comfort and support during even the toughest sports activities. Specially shaped to ensure the best fit whilst the arch bracing and deep ridged cuff give firm grip and no-slip stability. The super soft yarns, including the latest REPVEVE® recycled yarns, and flat toe seam reduce irritation on the skin whilst the padded zones offer cushioned protection for the heel, ankle bone and toes. Top ventilation panels allow the foot to breathe and maintain an even temperature.



silver/fluorescent/teal
1478S
LS, LM



OTHER COLOURWAYS
black/fluorescent/teal
1478B
M, L



Toe seam stitch colour denotes size and fit:

MEN'S FIT D-4E		
M	6-8½ (39-42.5)	GREEN
L	9-11½ (43-46.5)	RED
LADIES' FIT AAA-B		
LS	3-5½ (35.5-38.5)	BLUE
LM	6-8½ (39-42.5)	LILAC



81% REPVEVE® polyester
17% polyamide
2% elastane



Run Anklet 2262

The single layer 1000 MILE RUN ANKLET keeps feet protected and supported during running and other intense sporting activities such as racket sports and gymwork. An abundance of REPVE® recycled materials in the fabric blend offers an eco-friendly alternative: REPVE® poly yarns are made from 100% recycled materials (primarily plastic bottles). Combined with high quality REPVE® recycled Nylon 6, these socks will help protect and support the planet – as well as your feet! Padded zones give added comfort and shock absorption for the heel, toes and ball of the foot: the padded heel extends to protect the achilles tendon. Ventilation mesh for superior breathability, arch bracing for extra firm grip and a fitted heel: all these features make this the cool choice, whatever your sport.



COLOURWAYS

Twin pack
black/grey
2262B
LS, LM / M-XL



Twin pack
silver/orange + silver/green
2262G
M-XL

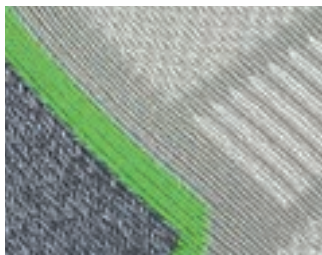
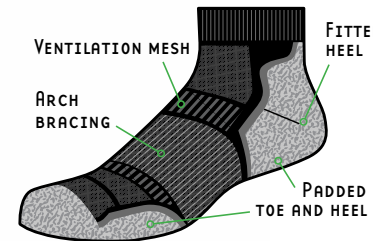


Twin pack
silver/pink + silver/blue
2262G
LS, LM



Toe seam stitch colour denotes size and fit:

MEN'S FIT D-4E	
M 6-8½ (39-42.5)	GREEN
L 9-11½ (43-46.5)	RED
XL 12-14 (47-49)	ROYAL
LADIES' FIT AAA-B	
LS 3-5½ (35.5-38.5)	BLUE
LM 6-8½ (39-42.5)	LILAC



57% REPVE® polyester
14% REPVE® Nylon 6
26% nylon
3% elastane



SINGLE LAYER

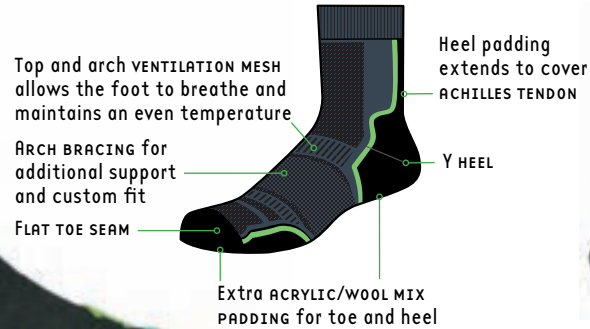
REPVE®

TWIN PACK

Trail Sock 2266

Perfect for trail and fell running and mountain biking, the 1000 MILE TRAIL SOCK is anatomically designed to give comfort and support during your off-road running and racing. The padded heel extends to protect

the achilles tendon, toes and ball of the foot. The combination of fibres, including the latest REPREEVE® recycled yarns, helps reduce friction, wick moisture and dry quickly. Arch bracing provides a customised fit with no slippage. Ventilation zones allow the foot to breathe and maintain an even temperature.



COLOURWAYS

Twin pack
black/orange+black/green
2266B
M-XL

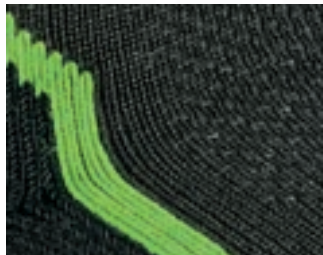


Twin pack
navy/lilac+navy/kingfisher
2266N
LS, LM



Toe seam stitch colour denotes size and fit:

MEN'S FIT D-4E		
M	6-8½ (39-42.5)	GREEN
L	9-11½ (43-46.5)	RED
LADIES' FIT AAA-B		
LS	3-5½ (35.5-38.5)	BLUE
LM	6-8½ (39-42.5)	LILAC



56% REPREEVE® Nylon 6
22% acrylic
20% wool
2% elastane



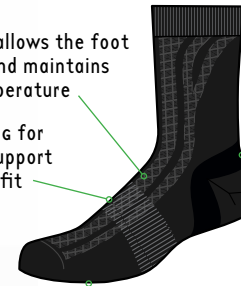
Liner Sock 1148

Use as a blister-preventing base layer under a traditional thick walking sock for 3 & 4 season use or as a stand-alone summer sock with lightweight fabric boots. The 1000 MILE ULTIMATE LINER SOCK is a double layer sock: the inner layer wicks away perspiration to the moisture absorbing outer layer, keeping the feet dry. The combination of fibres, including the latest REPREEVE® recycled yarns, and top venting maintains a comfortable temperature for the foot. Arch bracing offers additional support. HeelPower fabric technology grips the heel firmly in place, so no slippage!



TOP VENTING allows the foot to breathe and maintains an even temperature

ARCH BRACING for additional support and custom fit



HEELPOWER design grips the heel firmly in place – so no slippage!

DOUBLE LAYER CONSTRUCTION eliminates friction between foot and shoe, reducing wear and helping to prevent blisters

black
1148
LS, LM, M-XL



OUTER LAYER:
66% REPREEVE® polyester
25% nylon
8% REPREEVE® Nylon 6
1% elastane
INNER LAYER:
100% REPREEVE® Nylon 6



Toe seam stitch colour denotes size and fit:
MEN'S FIT D-4E
M 6-8½ (39-42.5) **GREEN**
L 9-11½ (43-46.5) **RED**
XL 12-14 (47-49) **ROYAL**
LADIES' FIT AAA-B
LS 3-5½ (35.5-38.5) **BLUE**
LM 6-8½ (39-42.5) **LILAC**

Approach Sock 1999

The crew length 1000 MILE APPROACH SOCK is designed for maximum comfort with today's technical approach footwear. The inner layer stays with the foot, wicking away moisture, whilst the outer layer moves with the shoe, reducing friction and helping to prevent blisters and reduce wear. The unique combination of fibres, including the latest REPPEVE® recycled yarns, maintains a comfortable temperature for the foot, making this the perfect warmer weather outdoor activity sock to wear with lightweight boots as well as approach/trail shoes and sandals.



ARCH BRACING for additional support and custom fit



HEELPOWER design grips the heel firmly in place – so no slippage!

DOUBLE LAYER CONSTRUCTION eliminates friction between foot and shoe, reducing wear and helping to prevent blisters

navy marl/kingfisher
1999K
LS, LM / M, L



OTHER COLOURWAYS
charcoal marl/orange
1999O
M-XL



navy marl/mauve
1999M
LS, LM



Toe seam stitch colour denotes size and fit:

MEN'S FIT D-4E		
M	6-8½ (39-42.5)	GREEN
L	9-11½ (43-46.5)	RED
XL	12-14 (47-49)	ROYAL
LADIES' FIT AAA-B		
LS	3-5½ (35.5-38.5)	BLUE
LM	6-8½ (39-42.5)	LILAC



OUTER LAYER:
42% REPPEVE® Nylon 6
20% wool
18% acrylic
18% polyamide
2% elastane
INNER LAYER:
99% REPPEVE® Nylon 6
1% elastane

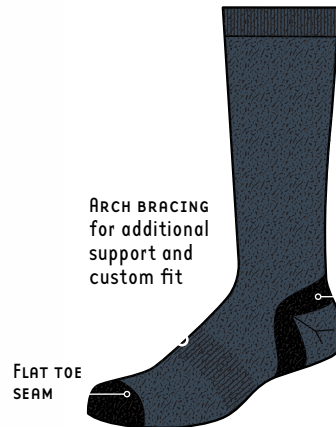


Lightweight Walk Sock 3196

A mid-calf length sock, the 1000 MILE LIGHTWEIGHT WALK Sock is recommended for 3 season walking in any type of boot. The inner layer stays with the foot, wicking away moisture, whilst the outer moves with the shoe, helping to prevent blisters and reduce wear. The unique combination of fibres, including the latest REPREEVE® recycled yarns, maintains a comfortable temperature for the foot. Arch bracing gives additional support.



ultramarine marl
3196V
LS, LM, M-XL

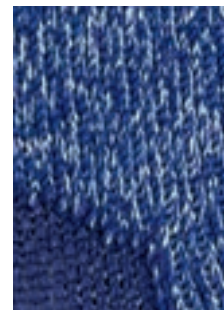


ARCH BRACING for additional support and custom fit

FLAT TOE SEAM

HEELPOWER design grips the heel firmly in place – so no slippage!

DOUBLE LAYER CONSTRUCTION eliminates friction between foot and shoe, reducing wear and helping to prevent blisters



OUTER LAYER:
25% REPREEVE® Nylon 6
25% wool
25% acrylic
18% nylon
4% cotton
3% elastane
INNER LAYER:
100% REPREEVE® Nylon 6



OTHER COLOURWAYS



charcoal marl
3196B
M, L



cornflower marl
3196C
LS, LM

Toe seam stitch colour denotes size and fit:

MEN'S FIT D-4E		
M	6-8½ (39-42.5)	GREEN
L	9-11½ (43-46.5)	RED
XL	12-14 (47-49)	ROYAL
LADIES' FIT AAA-B		
LS	3-5½ (35.5-38.5)	BLUE
LM	6-8½ (39-42.5)	LXLC



Fusion Walk Sock 2033

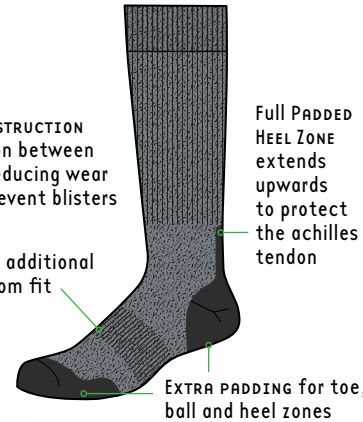
Conventional sock wisdom dictates that you can either have padding for protection and comfort, or two layers for reduced friction. The mid-calf length 1000 MILE FUSION WALK Sock breaks the mould with innovative design and material technology, including the latest REPVE® recycled yarns, to provide a sock that offers everything: the 1000 Mile double layer sock's blister-free guarantee with a soft durable outer and wicking inner, but with padded comfort and protection, including full-length achilles tendon padding. Volume and warmth that's perfect for 3/4 season walking.



2033B
charcoal marl/black
LS, LM, M, L

DOUBLE LAYER CONSTRUCTION eliminates friction between foot and shoe, reducing wear and helping to prevent blisters

ARCH BRACING for additional support and custom fit



OUTER LAYER:
42% REPVE® Nylon 6
20% wool
18% acrylic
18% polyamide
2% elastane
INNER LAYER:
99% REPVE®
Nylon 6
1% elastane



OTHER COLOURWAYS

navy marl/
royal blue
2033RY
M-XL



navy marl/
cornflower
2033C
LS, LM



navy marl/
mauve
2033M
LS, LM

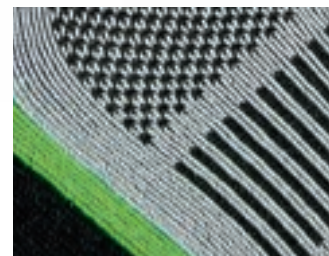
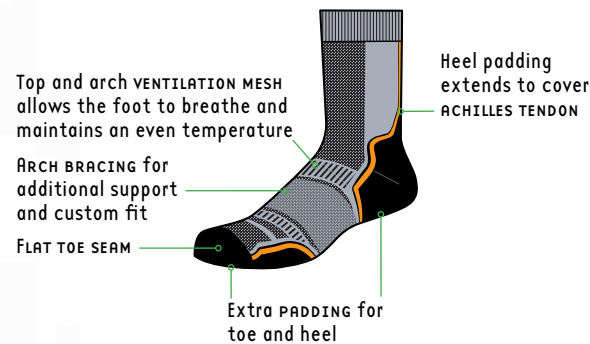


Toe seam stitch colour denotes size and fit:

MEN'S FIT D-4E		
M	6-8½ (39-42.5)	GREEN
L	9-11½ (43-46.5)	RED
XL	12-14 (47-49)	ROYAL
LADIES' FIT AAA-B		
LS	3-5½ (35.5-38.5)	BLUE
LM	6-8½ (39-42.5)	LILAC

Trek Sock 2271

Perfect for leisure hiking, trail running, walking or mountain biking. The 1000 MILE TREK SOCK is anatomically designed to give comfort and support during your leisure hours, be they spent travelling or in active sports. The padded heel extends to protect the achilles tendon, toes and ball of the foot. Arch bracing provides a customised fit with no slippage.



59% REPREVE® Nylon 6
18% polyamide
12% acrylic
9% wool
2% elastane



COLOURWAYS

black/orange+black/green
2271B
M-XL



silver/pink+silver/blue
2271N
LS, LM



Toe seam stitch colour denotes size and fit:

MEN'S FIT D-4E		
M	6-8½ (39-42.5)	GREEN
L	9-11½ (43-46.5)	RED
XL	12-14 (47-49)	ROYAL
LADIES' FIT AAA-B		
LS	3-5½ (35.5-38.5)	BLUE
LM	6-8½ (39-42.5)	LILAC

Walk Sock 2277

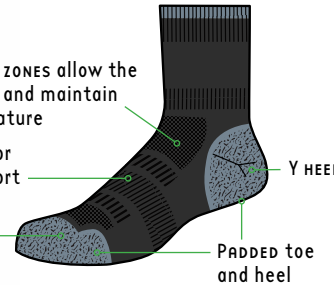
Perfect with all types of walking boot or shoe, the single layer 1000 MILE WALK SOCK offers 3 season comfort and temperature control. Ventilation zones and the mix of fibres allow the foot to breathe and maintain an even temperature. Loop stitched pile gives lots of volume and protection. Padded heel and toe panels, a flat toe seam and arch bracing help to provide a customised fit with no slippage, reducing friction and so less chance of blisters.



Top VENTILATION ZONES allow the foot to breathe and maintain an even temperature

ARCH BRACING for additional support and custom fit

FLAT TOE SEAM



COLOURWAYS

2277C charcoal+navy M-XL



2277N navy/cornflower + navy/mauve LS, LM



Toe seam stitch colour denotes size and fit:

MEN'S FIT D-4E

M 6-8½ (39-42.5) **GREEN**

L 9-11½ (43-46.5) **RED**

XL 12-14 (47-49) **ROYAL**

LADIES' FIT AAA-B

LS 3-5½ (35.5-38.5) **BLUE**

LM 6-8½ (39-42.5) **LILAC**



78% REPREVE® Nylon 6
20% polyamide
2% elastane





ESTABLISHED 1990

SPORTS SOCK COLLECTION



The Original 1000 Mile Sock 1111

Where it all started – the original sock within a sock. The inner stays with the foot, the outer layer moves with the shoe. The lack of friction between the layers helps prevent blisters and reduces wear. Outstanding comfort and no blisters – guaranteed! Suitable for running, racket sports, cross-training and gym work, as well as a superb everyday sock.

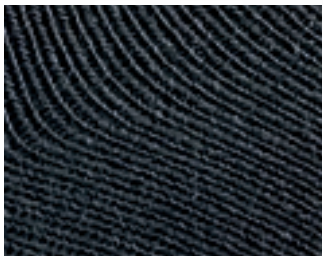


DOUBLE LAYER CONSTRUCTION eliminates friction between foot and shoe, reducing wear and helping to prevent blisters



The original. Blister-free guaranteed since 1990

Black
1111B
S-XL
UNISEX
SIZING



76% cotton
24% nylon



DOUBLE LAYER



UNISEX FITTING
Toe seam stitch colour denotes size:

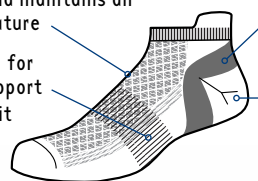
S	3-5½ (35.5-38.5)	BLUE
M	6-8½ (39-42.5)	GREEN
L	9-11½ (43-46.5)	RED
XL	12-14 (47-49)	ROYAL

Ultimate Tactel® Trainer Liner 1548

The ultimate technical socklet. The unique Tactel® inner layer wicks away perspiration to the moisture absorbing outer layer, keeping the feet dry. The combination of fibres and top venting maintains a comfortable temperature for the foot. Arch bracing offers additional support. HeelPower fabric technology grips the heel firmly in place, so no slippage!

TOP VENTING allows the foot to breathe and maintains an even temperature

ARCH BRACING for additional support and custom fit



HEELPOWER design grips the heel firmly in place – so no slippage!

Y HEEL for an improved fit

DOUBLE LAYER CONSTRUCTION eliminates friction between foot and shoe, reducing wear and helping to prevent blisters



hot pink
1548F
LS, LM



OUTER LAYER:
65% cotton
34% nylon
1% Elastane Lycra®
INNER LAYER:
100% Tactel®



OTHER COLOURWAYS

white
1548W
LS, LM
M, L



black
1548K
LS, LM
M-XL



teal
1548T
LS, LM



purple
1548P
LS, LM



Toe seam stitch colour denotes size and fit:

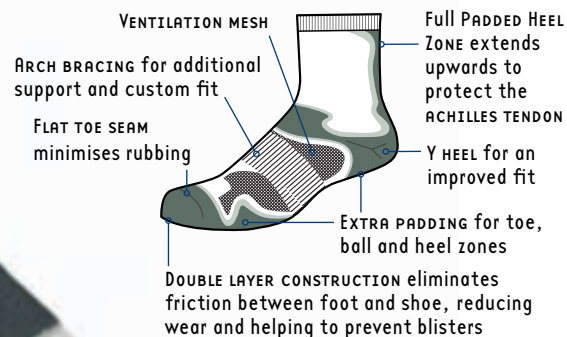
MEN'S FIT D-4E		
M	6-8½ (39-42.5)	GREEN
L	9-11½ (43-46.5)	RED
XL	12-14 (47-49)	ROYAL
LADIES' FIT AAA-B		
LS	3-5½ (35.5-38.5)	BLUE
LM	6-8½ (39-42.5)	LILAC



Fusion Sock 2029

Conventional sock wisdom dictates that you can either have padding for protection and comfort, or two layers for reduced friction. Padded socks are thick, double layer socks are thin. The 1000 MILE Fusion Sock breaks that mould with innovative design and material technology to provide a sock that offers everything: the 1000 Mile double layer sock's blister-free guarantee, but with padded comfort and protection, including full-length achilles tendon padding.

The black version features a longer leg for trail and off-road running, so is also suited for winter use.



white
2029W
LS, LM / M-XL

Black version
features a
LONGER LEG



OTHER COLOURWAY

black
2029B
LS, LM / M-XL



OUTER LAYER:
98% nylon
2% Lycra®
INNER LAYER:
100% Tactel®



Toe seam stitch colour denotes size and fit:

MEN'S FIT D-4E

M 6-8½ (39-42.5) **GREEN**

L 9-11½ (43-46.5) **RED**

XL 12-14 (47-49) **ROYAL**

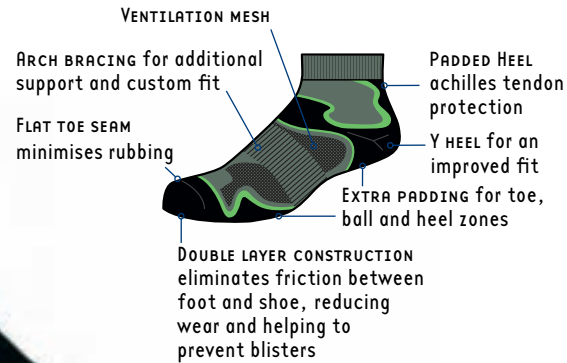
LADIES' FIT AAA-B

LS 3-5½ (35.5-38.5) **BLUE**

LM 6-8½ (39-42.5) **LILAC**

Fusion Anklet Sock 2026

The FUSION ANKLET features the same elements as the 2029 Fusion Sock but is knitted to an ankle length profile, for those who prefer a shorter sock. The same double layer technology is utilised with the blister free guarantee and padded zones for comfort and protection.



black/green
2026G
LS, LM / M-XL

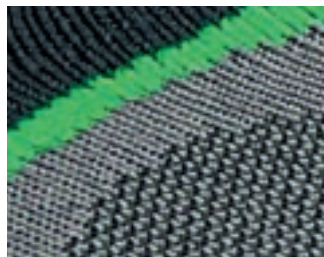


OTHER COLOURWAYS

white
2026W
LS, LM / M-XL



purple/grey
2026P
LS, LM



OUTER LAYER:
98% nylon
2% Lycra®
INNER LAYER:
100% Tactel®

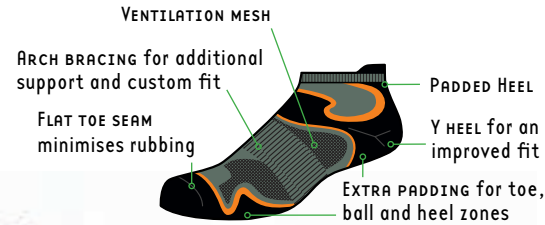


Toe seam stitch colour denotes size and fit:

MEN'S FIT D-4E		
M	6-8½ (39-42.5)	GREEN
L	9-11½ (43-46.5)	RED
XL	12-14 (47-49)	ROYAL
LADIES' FIT AAA-B		
LS	3-5½ (35.5-38.5)	BLUE
LM	6-8½ (39-42.5)	LILAC

Fusion Socklet 2023

The FUSION SOCKLET features the same elements as the 2029 Fusion Sock and 2026 Fusion Anklet but is knitted to a trainer liner length profile, for those who prefer a 'no sock' look. The same double layer technology is utilised with the blister free guarantee and padded zones for comfort and protection.



DOUBLE LAYER CONSTRUCTION eliminates friction between foot and shoe, reducing wear and helping to prevent blisters



black/orange
2023B
M-XL



OUTER LAYER:
74% nylon
20% Lycra®
6% elastane
INNER LAYER:
100% Tactel®



OTHER COLOURWAYS

purple/kingfisher
2023M
LS, LM



pink/purple
2023P
LS, LM



Toe seam stitch colour denotes size and fit:

MEN'S FIT D-4E

M 6-8½ (39-42.5) **GREEN**

L 9-11½ (43-46.5) **RED**

XL 12-14 (47-49) **ROYAL**

LADIES' FIT AAA-B

LS 3-5½ (35.5-38.5) **BLUE**

LM 6-8½ (39-42.5) **LILAC**

All Terrain Sock 1950

A sock within a sock. The 100% Tactel® inner layer of the 1000 MILE ALL TERRAIN Sock stays with the foot, wicking away moisture, whilst the soft wool-cotton mix outer moves with the shoe. The unique combination of fibres, which includes merino wool, and top venting maintain a comfortable temperature for the foot.

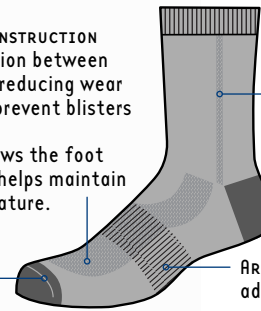
Arch braces on both layers help prevent unwanted movement, even on severe slopes.

Recommended for all types of off-road activities, these crew length socks will help you keep going when the going gets really tough.

DOUBLE LAYER CONSTRUCTION eliminates friction between foot and shoe, reducing wear and helping to prevent blisters

TOP VENTING allows the foot to breathe and helps maintain an even temperature.

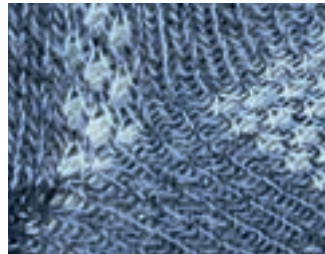
FLAT TOE SEAM



SIDE AIRFLOW CHANNELS

ARCH BRACING for additional support and custom fit

Sapphire
1950S
LS, LM, M, L



OUTER LAYER:
45% merino wool
42% cotton
12% nylon
1% elastane Lycra®
INNER LAYER:
100% Tactel®

BLISTER-FREE
GUARANTEE

DOUBLE
LAYER



OTHER COLOURWAYS

granite
1950G
M-XL



raspberry
1950R
LS, LM



Toe seam stitch colour denotes size and fit:

MEN'S FIT D-4E

M 6-8½ (39-42.5) **GREEN**

L 9-11½ (43-46.5) **RED**

XL 12-14 (47-49) **ROYAL**

LADIES' FIT AAA-B

LS 3-5½ (35.5-38.5) **BLUE**

LM 6-8½ (39-42.5) **LILAC**

Trail Sock 2265

Perfect for trail and fell running and mountain biking, the 1000 MILE TRAIL SOCK is anatomically designed to give comfort and support during your off-road running and racing. The padded heel extends to protect the achilles tendon, toes and ball of the foot. The combination of fibres helps reduce friction, wick moisture and dry quickly. Arch bracing provides a customised fit with no slippage. Ventilation zones allow the foot to breathe and maintain an even temperature.



53% polyamide
24% wool
22% acrylic
1% elastane

**SINGLE
LAYER**

**TWIN
PACK**



COLOURWAYS

Twin pack
grey/orange+grey/green
2265G
M-XL



Twin pack
grey/purple+grey/blue
2265G
LS, LM



Toe seam stitch colour denotes size and fit:

MEN'S FIT D-4E

M 6-8½ (39-42.5) **GREEN**

L 9-11½ (43-46.5) **RED**

XL 12-14 (47-49) **ROYAL**

LADIES' FIT AAA-B

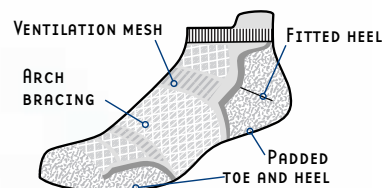
LS 3-5½ (35.5-38.5) **BLUE**

LM 6-8½ (39-42.5) **LILAC**

Run Socklet 2263

The single layer 1000 MILE RUN SOCKLET gives protection and support when and where it counts, during running and other intense sporting activities.

Knitted to a trainer liner length profile for those who prefer a 'no sock' look. Padded zones offer added comfort and shock absorption for the heel, toes and ball of the foot: the padded heel extends to protect the achilles tendon. The specially selected fabric blend helps reduce friction, wick moisture and dry quickly. Ventilation mesh for superior breathability, arch bracing for extra firm grip and a fitted heel for exact fit: all these features make this the cool choice, whatever your sport.



COLOURWAYS

Men's twin pack
kingfisher + navy
2263K
M-XL



Ladies' twin pack
hot pink + lavender
2263H
LS, LM



64% polyamide
34% polyester
2% elastane

**SINGLE
LAYER**

**TWIN
PACK**

Toe seam stitch colour denotes size and fit:

MEN'S FIT D-4E		
M	6-8½ (39-42.5)	GREEN
L	9-11½ (43-46.5)	RED
XL	12-14 (47-49)	ROYAL
LADIES' FIT AAA-B		
LS	3-5½ (35.5-38.5)	BLUE
LM	6-8½ (39-42.5)	LILAC

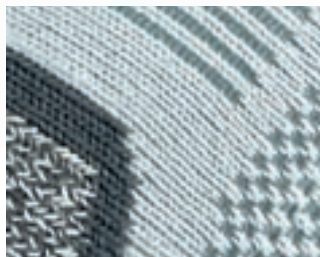
Run Anklet 2261

The 1000 MILE RUN ANKLET keeps feet protected and supported during running and other intense sporting activities such as racket sports and gymwork.

Padded zones offer added comfort and shock absorption for the heel, toes and ball of the foot: the padded heel extends to protect the achilles tendon. The specially selected fabric blend helps reduce friction, wick moisture and dry quickly. Ventilation mesh for superior breathability, arch bracing for extra firm grip and a Y heel for exact fit: all these features make this the cool choice, whatever your sport.



Twin pack
white/grey
2261W
LS, LM / M-XL



58% nylon
39% polyester
3% elastane

**SINGLE
LAYER**

**TWIN
PACK**



Toe seam stitch colour denotes size and fit:

MEN'S FIT D-4E

M 6-8½ (39-42.5) **GREEN**

L 9-11½ (43-46.5) **RED**

XL 12-14 (47-49) **ROYAL**

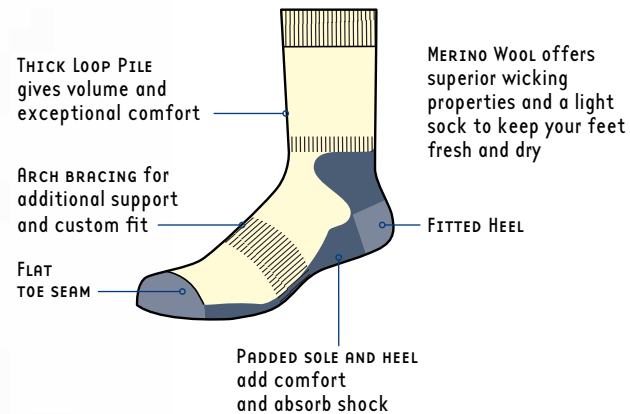
LADIES' FIT AAA-B

LS 3-5½ (35.5-38.5) **BLUE**

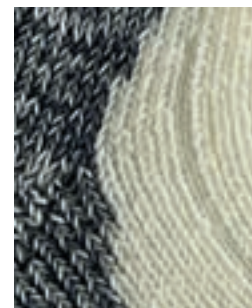
LM 6-8½ (39-42.5) **LILAC**

Cricket Sock 2006

The 1000 MILE CRICKET SOCK features a unique blend of fibres, rich in merino wool, which combine to provide superior wicking properties and a light sock to keep your feet fresh and dry. A thick loop pile and padded sole/heel zones add to the feeling of comfort, even after an arduous day in the field or at the crease.



2006
S-XL



76% merino wool
23% nylon
1% elastane

**SINGLE
LAYER**

UNISEX FITTING

Toe seam stitch colour denotes size:

S	3-5½ (35.5-38.5)	BLUE
M	6-8½ (39-42.5)	GREEN
L	9-11½ (43-46.5)	RED
XL	12-14 (47-49)	ROYAL

Lightweight Cricket Sock 2005

The 1000 MILE LIGHTWEIGHT CRICKET SOCK is designed with maximum comfort in mind, no matter how hard the going gets.

The 100% Tactel® inner layer stays with the foot, wicking away moisture, whilst the soft merino wool-mix outer moves with the shoe. The lack of friction between the layers helps to prevent blisters and reduces wear.

The unique combination of fibres maintains a comfortable temperature for the foot. The double layer construction means that your feet stay cool, dry and blister free – guaranteed – even after an arduous day in the field, bowling or at the crease.

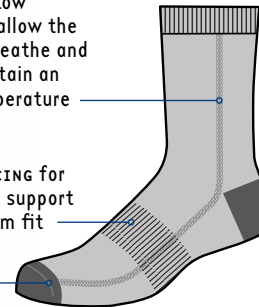


2005
M-XL

SIDE AIRFLOW CHANNELS allow the foot to breathe and help maintain an even temperature

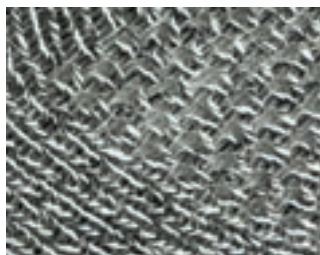
ARCH BRACING for additional support and custom fit

FLAT TOE SEAM



FITTED HEEL

DOUBLE LAYER CONSTRUCTION eliminates friction between foot and shoe, reducing wear and helping to prevent blisters



OUTER LAYER:
45% merino wool
42% cotton
12% nylon
1% elastane Lycra®
INNER LAYER:
100% Tactel®



**DOUBLE
LAYER**



UNISEX FITTING

Toe seam stitch colour denotes size:

S	3-5½ (35.5-38.5)	BLUE
M	6-8½ (39-42.5)	GREEN
L	9-11½ (43-46.5)	RED
XL	12-14 (47-49)	ROYAL



1000
MILE[®]

ESTABLISHED 1990

**WALKING SOCK
COLLECTION**

Ultimate Liner Sock 1147

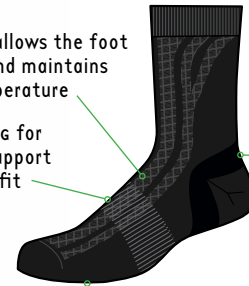
Use as a blister-preventing base layer under a traditional thick walking sock for 3 & 4 season use or as a stand-alone summer sock with lightweight fabric boots. The 1000 MILE ULTIMATE LINER SOCK is a double layer sock: the unique Tactel® inner layer wicks away perspiration to the moisture absorbing outer layer, keeping the feet dry. The combination of fibres maintains a comfortable temperature for the foot.

Arch bracing offers additional support. HeelPower fabric technology grips the heel firmly in place, so no slippage.



TOP VENTING allows the foot to breathe and maintains an even temperature

ARCH BRACING for additional support and custom fit



HEELPOWER design grips the heel firmly in place – so no slippage!

DOUBLE LAYER CONSTRUCTION eliminates friction between foot and shoe, reducing wear and helping to prevent blisters

black
1147
LS, LM, M, L



OUTER LAYER:
70% cotton
29% nylon
1% elastane Lycra®
INNER LAYER:
100% Tactel®



Toe seam stitch colour denotes size and fit:

MEN'S FIT D-4E

M 6-8½ (39-42.5) **GREEN**

L 9-11½ (43-46.5) **RED**

XL 12-14 (47-49) **ROYAL**

LADIES' FIT AAA-B

LS 3-5½ (35.5-38.5) **BLUE**

LM 6-8½ (39-42.5) **LILAC**

All Terrain Sock 1950

A sock within a sock. The 100% Tactel® inner layer of the 1000 MILE ALL TERRAIN Sock stays with the foot, wicking away moisture, whilst the soft wool-cotton mix outer moves with the shoe. The unique combination of fibres, which includes merino wool, and top venting maintain a comfortable temperature for the foot.

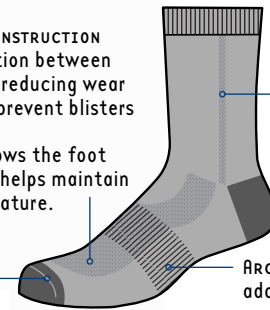
Arch braces on both layers help prevent unwanted movement, even on severe slopes. Recommended for all types of off-road activities, these crew length socks will help you keep going when the going gets really tough.



DOUBLE LAYER CONSTRUCTION eliminates friction between foot and shoe, reducing wear and helping to prevent blisters

TOP VENTING allows the foot to breathe and helps maintain an even temperature.

FLAT TOE SEAM



SIDE AIRFLOW CHANNELS

ARCH BRACING for additional support and custom fit

sapphire
1950S
LS, LM, M, L



OUTER LAYER:
45% merino wool
42% cotton
12% nylon
1% elastane Lycra®
INNER LAYER:
100% Tactel®



OTHER COLOURWAYS

granite
1950G
M-XL



raspberry
1950L
LS, LM



Toe seam stitch colour denotes size and fit:

MEN'S FIT D-4E		
M	6-8½ (39-42.5)	GREEN
L	9-11½ (43-46.5)	RED
XL	12-14 (47-49)	ROYAL
LADIES' FIT AAA-B		
LS	3-5½ (35.5-38.5)	BLUE
LM	6-8½ (39-42.5)	LILAC

Approach Sock 1998

The crew length 1000 MILE APPROACH SOCK is designed for maximum comfort with today's technical approach footwear. The 100% Tactel® inner layer stays with the foot, wicking away moisture, whilst the soft merino wool-mix outer moves with the shoe, reducing friction and helping to prevent blisters and reduce wear. The unique combination of fibres maintains a comfortable temperature for the foot, making this the perfect warmer weather outdoor activity sock to wear with lightweight boots as well as approach/trail shoes and sandals.



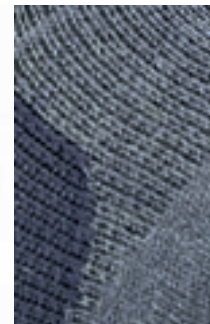
ARCH BRACING for additional support and custom fit



HEELPOWER design grips the heel firmly in place – so no slippage!

DOUBLE LAYER CONSTRUCTION eliminates friction between foot and shoe, reducing wear and helping to prevent blisters

navy
1998N
LS, LM, M, L



OUTER LAYER:
54% merino wool
45% nylon
1% lycra®
INNER LAYER:
100% Tactel®



DOUBLE LAYER



OTHER COLOURWAYS

Charcoal
1998C
M-XL



Fuschsia
1998F
LS, LM



Toe seam stitch colour denotes size and fit:

MEN'S FIT D-4E		
M	6-8½ (39-42.5)	GREEN
L	9-11½ (43-46.5)	RED
XL	12-14 (47-49)	ROYAL
LADIES' FIT AAA-B		
LS	3-5½ (35.5-38.5)	BLUE
LM	6-8½ (39-42.5)	LILAC

Lightweight Walk Sock 3195

A mid-calf length sock, the 1000 MILE LIGHTWEIGHT WALK SOCK is recommended for 3 season walking in any type of boot. The 100% Tactel® inner layer stays with the foot, wicking away moisture, whilst the soft merino wool-mix outer moves with the shoe, helping to prevent blisters and reduce wear. The unique combination of fibres maintains a comfortable temperature for the foot. Arch bracing gives additional support.



cornflower
3195C
LS, LM



DOUBLE LAYER CONSTRUCTION eliminates friction between foot and shoe, reducing wear and helping to prevent blisters



OUTER LAYER:
39% merino wool
59% nylon
2% Lycra®
INNER LAYER:
100% Tactel®

**BLISTER-FREE
GUARANTEE**

**DOUBLE
LAYER**



OTHER COLOURWAYS



Charcoal
3195B
LS, LM, M, L



Navy
3195N
M-XL



Moss
3195M
M, L

Toe seam stitch colour denotes size and fit:

MEN'S FIT D-4E		
M	6-8½ (39-42.5)	GREEN
L	9-11½ (43-46.5)	RED
XL	12-14 (47-49)	ROYAL
LADIES' FIT AAA-B		
LS	3-5½ (35.5-38.5)	BLUE
LM	6-8½ (39-42.5)	LILAC

Fusion Walk Sock 2032

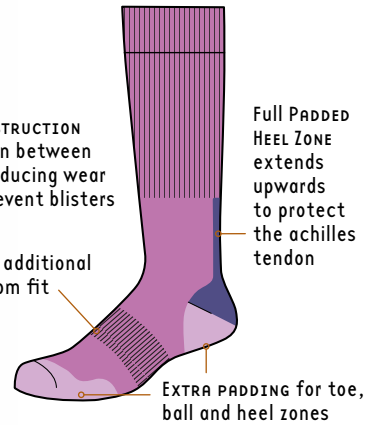
Conventional sock wisdom dictates that you can either have padding for protection and comfort, or two layers for reduced friction. Padded socks are thick, double layer socks are thin. The mid-calf length 1000 MILE FUSION WALK SOCK breaks that mould with innovative design and material technology to provide a sock that offers everything: the 1000 Mile double layer sock's blister-free guarantee with a soft durable merino wool mix outer and wicking Tactel® inner, but with padded comfort and protection, including full-length achilles tendon padding. Offers volume and warmth which is perfect for 3/4 season walking.



mauve
2032M
LS, LM

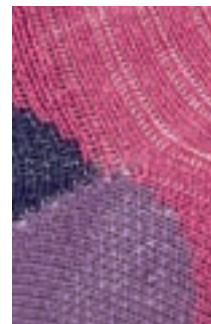
DOUBLE LAYER CONSTRUCTION eliminates friction between foot and shoe, reducing wear and helping to prevent blisters

ARCH BRACING for additional support and custom fit



Full PADDED HEEL ZONE extends upwards to protect the achilles tendon

EXTRA PADDING for toe, ball and heel zones



OUTER LAYER:
30% merino wool
46% nylon
23% cotton
1% elastane
INNER LAYER:
100% Tactel®

BLISTER-FREE
GUARANTEE

DOUBLE
LAYER



OTHER COLOURWAYS



charcoal
2032C
LS, LM, M-XL



navy
2032N
M, L

Toe seam stitch colour denotes size and fit:

MEN'S FIT D-4E

M 6-8½ (39-42.5) **GREEN**

L 9-11½ (43-46.5) **RED**

XL 12-14 (47-49) **ROYAL**

LADIES' FIT AAA-B

LS 3-5½ (35.5-38.5) **BLUE**

LM 6-8½ (39-42.5) **LILAC**

Classic Combat Sock 1821

Double layer sock. Acrylic/nylon mix for comfort, durability and fast wicking. Dries very quickly for easy washing in the field. Black (passes kit inspection).



Black
1821B
S-XL



DOUBLE LAYER CONSTRUCTION eliminates friction between foot and shoe, reducing wear and helping to prevent blisters



60% acrylic
40% nylon

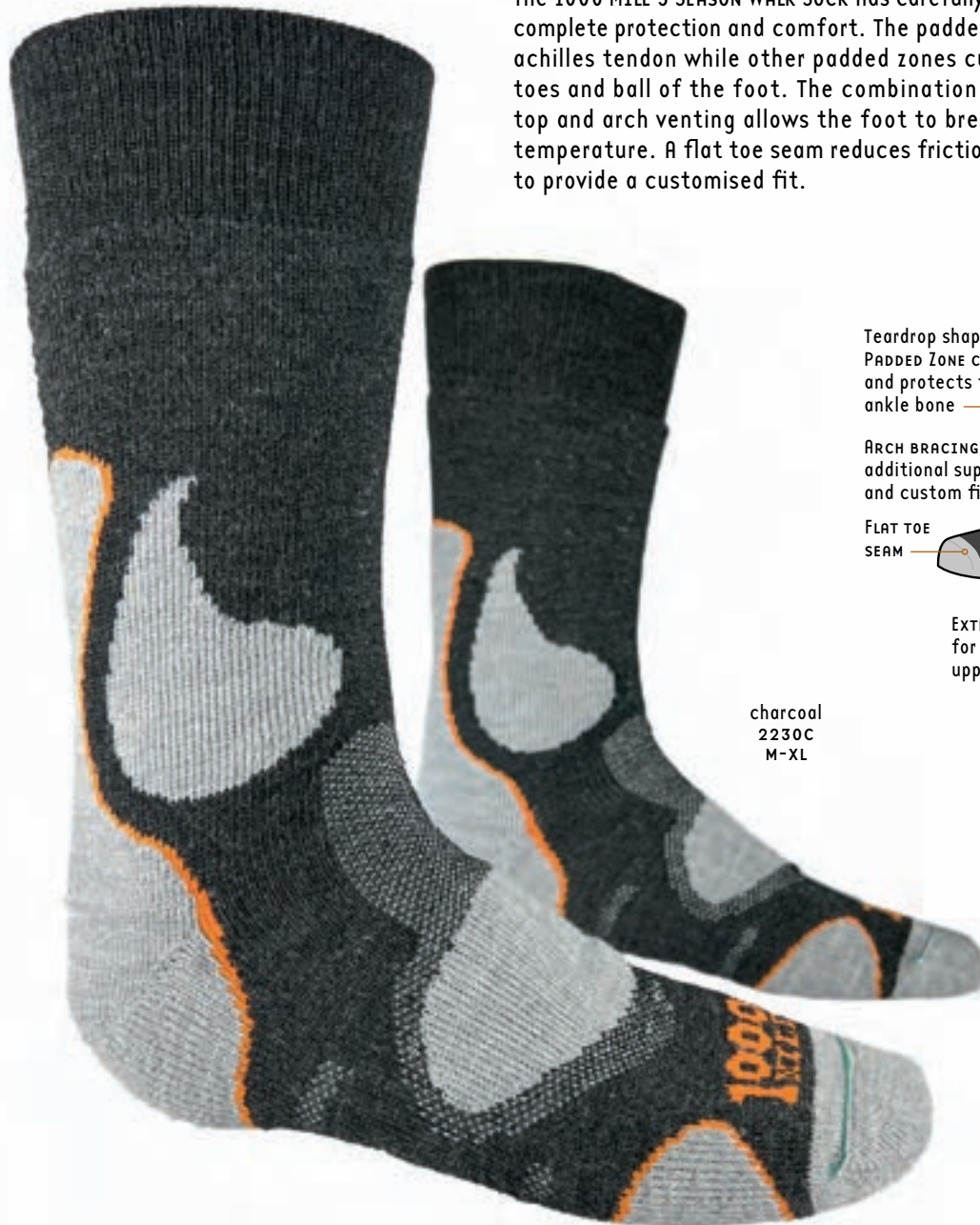


UNISEX FITTING
Toe seam stitch colour denotes size:

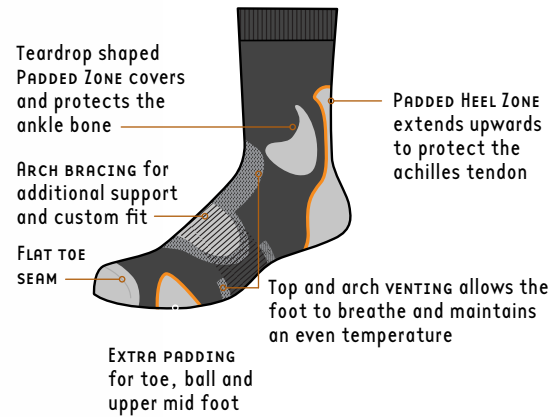
S	3-5½ (35.5-38.5)	BLUE
M	6-8½ (39-42.5)	GREEN
L	9-11½ (43-46.5)	RED
XL	12-14 (47-49)	ROYAL

3 Season Walk Sock 2230

The 1000 MILE 3 SEASON WALK SOCK has carefully chosen padded zones to offer complete protection and comfort. The padded heel extends to cover the achilles tendon while other padded zones cushion the ankle bones, toes and ball of the foot. The combination of soft merino wool with top and arch venting allows the foot to breathe and maintains an even temperature. A flat toe seam reduces friction and the arch bracing helps to provide a customised fit.



charcoal
2230C
M-XL



80% merino wool
19% nylon
1% elastane

**SINGLE
LAYER**



OTHER COLOURWAYS

purple
2230P
LS, LM



Toe seam stitch colour denotes size and fit:

MEN'S FIT D-4E

M 6-8½ (39-42.5) **GREEN**

L 9-11½ (43-46.5) **RED**

XL 12-14 (47-49) **ROYAL**

LADIES' FIT AAA-B

LS 3-5½ (35.5-38.5) **BLUE**

LM 6-8½ (39-42.5) **LILAC**

Trail Sock 2265

Perfect for trail and fell running and mountain biking, the 1000 MILE TRAIL SOCK is anatomically designed to give comfort and support during your off-road running and racing. The padded heel extends to protect the achilles tendon, toes and ball of the foot. The combination of fibres helps reduce friction, wick moisture and dry quickly. Arch bracing provides a customised fit with no slippage. Ventilation zones allow the foot to breathe and maintain an even temperature.



Top and arch VENTILATION MESH allows the foot to breathe and maintains an even temperature

ARCH BRACING for additional support and custom fit

FLAT TOE SEAM

Extra ACRYLIC/WOOL MIX PADDING for toe and heel

Heel padding extends to cover ACHILLES TENDON



COLOURWAYS

Twin pack
grey/orange+grey/green
2265G
M-XL



Twin pack
grey/purple+grey/blue
2265G
LS, LM



53% polyamide
24% wool
22% acrylic
1% elastane

**SINGLE
LAYER**

**TWIN
PACK**

Toe seam stitch colour denotes size and fit:

MEN'S FIT D-4E

M 6-8½ (39-42.5) **GREEN**

L 9-11½ (43-46.5) **RED**

XL 12-14 (47-49) **ROYAL**

LADIES' FIT AAA-B

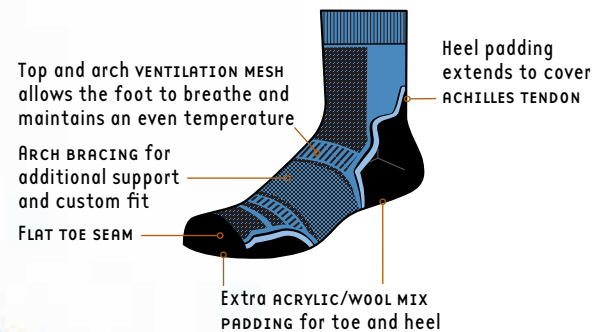
LS 3-5½ (35.5-38.5) **BLUE**

LM 6-8½ (39-42.5) **LILAC**

Trek Sock 2270



Perfect for leisure hiking, trail running, walking or mountain biking. The 1000 MILE TREK SOCK is anatomically designed to give comfort and support during your leisure hours, be they spent travelling or in active sports. The padded heel extends to protect the achilles tendon, toes and ball of the foot. A specially selected merino wool blend helps to reduce friction, wick moisture and dry quickly. It also contains natural anti-bacterial qualities. Arch bracing provides a customised fit with no slippage.



53% polyamide
24% wool
22% acrylic
1% elastane

**SINGLE
LAYER**

**TWIN
PACK**



COLOURWAYS

Men's twin pack
grey/charcoal + navy/charcoal
2270N
M-XL



Ladies' twin pack
cornflower/navy + raspberry/navy
2270N
LS, LM



Toe seam stitch colour
denotes size and fit:

MEN'S FIT D-4E

M 6-8½ (39-42.5) **GREEN**

L 9-11½ (43-46.5) **RED**

XL 12-14 (47-49) **ROYAL**

LADIES' FIT AAA-B

LS 3-5½ (35.5-38.5) **BLUE**

LM 6-8½ (39-42.5) **LILAC**

Walk Sock 2775



Perfect with all types of walking boot or shoe, the single layer 1000 MILE WALK Sock offers 3 season comfort and temperature control. The wool-rich mix of fibres and ventilation zones allow the foot to breathe and maintain an even temperature. Loop stitched pile gives lots of volume and protection. Padded heel and toe panels, a flat toe seam and arch bracing help to provide a customised fit with no slippage, reducing friction and so less chance of blisters.

Top VENTILATION ZONES allow the foot to breathe and maintain an even temperature

ARCH BRACING for additional support and custom fit

FLAT TOE SEAM



56% acrylic
25% wool
18% polyamide
1% elastane

SINGLE LAYER

TWIN PACK



COLOURWAYS

Men's twin pack
emerald + charcoal
2275E
M-XL



Ladies' twin pack
purple + emerald
2275P
LS, LM



UNISEX FITTING

Toe seam stitch colour denotes size:

S	3-5½ (35.5-38.5)	BLUE
M	6-8½ (39-42.5)	GREEN
L	9-11½ (43-46.5)	RED
XL	12-14 (47-49)	ROYAL

Combat Sock 2776



The single layer 1000 MILE COMBAT SOCK offers comfort and temperature control in the toughest conditions. Ventilation zones and the wool-rich mix of fibres allow the foot to breathe and maintain an even temperature. Loop stitched pile gives lots of volume and protection. Padded heel and toe panels, a flat toe seam and arch bracing help to provide a customised fit with no slippage, reducing friction and so less chance of blisters.

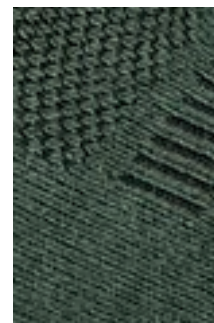
Top VENTILATION ZONES allow the foot to breathe and maintain an even temperature

ARCH BRACING for additional support and custom fit

FLAT TOE SEAM



PADDED toe and heel



56% acrylic
25% wool
18% polyamide
1% elastane

SINGLE LAYER

TWIN PACK



COLOURWAY

Twin pack
green + charcoal
2276
S-XL



Toe seam stitch colour denotes size and fit:

MEN'S FIT D-4E

M 6-8½ (39-42.5) **GREEN**

L 9-11½ (43-46.5) **RED**

XL 12-14 (47-49) **ROYAL**

LADIES' FIT AAA-B

LS 3-5½ (35.5-38.5) **BLUE**

LM 6-8½ (39-42.5) **LILAC**

RESOURCES



All the product photography featured in this catalogue, together with lifestyle images, logos and diagrams, can be found in Dropbox – ask your sales manager for details. Point of sale materials are also available.

Hopefully, we will be seeing you at trade shows in 2024.



- VENTILATION MESH
- ARCH BRACING for additional support and custom fit
- FLAT TOE SEAM minimises rubbing
- DOUBLE LAYER CONSTRUCTION eliminates friction between foot and shoe, reducing wear and helping to prevent blisters
- PADDED HEEL achilles tendon protection
- Y HEEL for an improved fit
- EXTRA PADDING for toe, ball and heel zones

DOUBLE LAYER

BLISTER-FREE GUARANTEE







1000 Mile Sportswear

Burton McCall Ltd · 163 Parker Drive · Leicester LE4 0JP
www.1000mile.co.uk

 1000MileSportswear

 @1000MileSocks

 @1000MileSocks