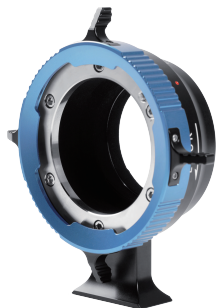




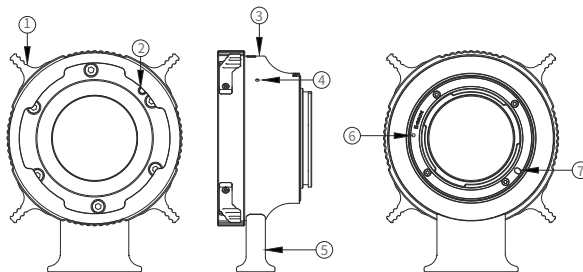
影像随心 思锐随行

思锐PL镜头相机转接环 (转E卡口 和 转RF卡口)



使用说明

产品元件



1	镜头释放手柄	5	脚架固定底座
2	镜头定位销	6	机身安装标记
3	转接环体	7	机身固定点
4	镜头安装标记		

产品特色

- 1、可使市场上通用的PL卡口镜头延展至E和RF机身上使用。
- 2、转接后接近原生卡口画质，保证优秀的素材输出。
- 3、铝合金材质，抗划耐用，提升转接的可靠性

操作说明

1. 转接环的安装

转接环与机身的连接（转接环上的红色圆点⑥对机身上的红色圆点），镜头与转接环的连接（镜头上的红色圆点对转接环上的红色圆点④）顺时针方向旋转听到“嗒”声锁紧为止。（尼康相机逆时针旋转镜头）

2. 转接环的卸除

- 2.1 按下转接环上的镜头释放手柄，逆时针方向旋转镜头，把镜头从转接环上取下。
- 2.2 按下相机机身锁紧按钮，逆时针方向旋转转接环，把转接环从机身上取下。

使用和保存注意事项

- 由于潮湿的关系可能导致发霉或生锈。长期不用的时候,请与干燥剂一起放置在密闭性好的容器内保管。请勿放置在有樟脑丸/防虫剂等地方。
- 灰尘或污垢可以用吹灰球或镜头刷轻轻除去。指纹等可用市面上销售的镜头清洁剂和擦镜纸轻轻擦拭。汽油、稀释液(香蕉水)等有机溶剂切勿使用。

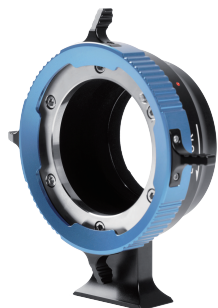
产品参数

产品名称	思锐PL镜头相机转接环	
产品型号	PL-E Adapter	PL-RF Adapter
兼容相机	索尼E卡口机身	佳能RF卡口机身
兼容镜头	市场上通用的PL卡口镜头，及思锐在售24、35、50mm T2木星系列全画幅微距电影镜头和28-85mm T3.2全画幅变焦电影镜头的PL卡口镜头	
对焦方式	手动(MF)	
三角架槽	CU 1/4" 可拆	
产品材质	高精航空铝材	
产品尺寸 (不含前后盖)	PL-E卡口 117x109x44.1mm	PL-RF卡口 117x109x43.2mm
产品重量 (含前后盖)	PL-E卡口 :340g	PL-RF卡口 :330g



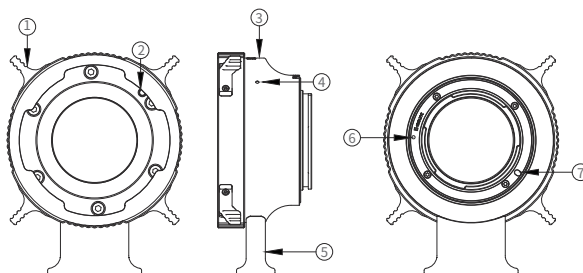
SIRUI

SIRUI E/Rf Adapter for PL Mount Lens



INSTRUCTIONS

Parts



1	Lens Release Lever	5	Mount Adapter Base
2	Lens Dowel Pin	6	Camera Fitting Mark
3	Adapter Body	7	Camera Anchor Point
4	Lens Fitting Mark		

Features

1. Adapt PL mount lens to Sony E or Canon RF mounts.
2. Adapt without sacrificing much image quality.
3. Constructed with aluminum alloy to be lightweight and sturdy.

Setup Instructions

1. Adapter Installation
Align the red dot ⑥ on the adapter with that of the camera and align the red dot ④ on the adapter with that of the lens, then twist clockwise until you hear a clicking sound. (Nikon cameras: twist counterclockwise)
2. Adapter Removal
 - 2.1 Press the release lever on the adapter and twist the lens counterclockwise to remove the lens.
 - 2.2 Press the lock button on the camera and twist the adapter counterclockwise to remove the adapter.

Precautions

1. Please avoid any long-term exposure of the adapter to a wet environment which may produce mold and rust on the adapter. Store the adapter in an airtight cabinet with a drying agent.
2. Gently remove dust and dirt with a cleaning cloth or brush. Wipe off fingerprints with special cleaning products and a cloth. Do not clean the adapter with general household cleaners.

Data Chart

Name	SIRUI E/Rf Adapter for PL Mount Lens	
Model	PL-E Adapter	PL-RF Adapter
Compatible Camera	Sony E Mount Cameras	Canon RF Mount Cameras
Compatible Lens	PL mount lenses on the market and SIRUI Jupiter lenses with PL mount	
Focus Method	Manual Focusing(MF)	
Mount Adapter Base	CU 1/4" Removable	
Mount Adapter Base	Aluminum Alloy	
Dimensions (lens caps not included)	EF-E Mount 117x109x44.1mm	EF-RF Mount 117x109x43.2mm
Weight (lens caps included)	EF-E Mount :340g	EF-RF Mount :330g