



TOWN & COUNTRY

No minimum order required

**Only \$11.50 flat rate freight charge
to anywhere in Canada**

**Visit us at www.tcuniforms.com
to see all our collections**

*Available with
long sleeves*



Brigade Jacket Black.
Short sleeves (18604MC)
Long sleeves (18604)
\$44.95 ea.

**Removable
Interchangeable Buttons**
(19015MUSTARD)
\$5.95/set of 7

Brigade Joggers Black.
(18107) \$44.95 ea.

Paisley Bandana Yellow.
(19011) \$3.95 ea.

Brigade

by UTC

A Timeless Collection.

The modern fit of the Brigade collection adapts to your movements for ultimate comfort. Combine functionality and elegance with a light, stretchy and easy-care material.

Brigade Jacket

For kitchen, service or for any other work, personalize your Brigade jacket with the interchangeable coloured buttons.

Brigade Joggers

The practical style and casual fit of the Brigade Joggers will take you from work to your daily activities.



Brigade Interchangeable Buttons

*Available with
long sleeves*



Brigade Jacket

Women's fitted cut, short sleeves, thermometer pocket on sleeve, utility pocket on back, apron attachment on collar, stretch fabric, 55% cotton, 42% polyester, 3% spandex, washable. Sand. Sand interchangeable buttons included. XS to 4XL

Short sleeves (18604MC)

Long sleeves (18604)

\$44.95 ea.



Removable Interchangeable Buttons

(19015BORDEAUX)

\$5.95/set of 7

Paisley Bandana

100% cotton, washable.

Burgundy (19011) **\$3.95 ea.**



Brigade Jacket

Men's semi-fitted cut, long sleeves, thermometer pocket on sleeve, utility pocket on back, apron attachment on collar, stretch fabric, 55% cotton, 42% polyester, 3% spandex, washable. Sand. Sand interchangeable buttons included. S to 4XL

Long sleeves (18602)

Short sleeves (18602MC)

\$44.95 ea.

Brigade Joggers

Men's casual fit, two side pockets, two back pockets and a small utility pocket on the thigh, elastic waistband with drawcord, back ankle with elastic, stretch fabric, 55% cotton, 42% polyester, 3% spandex, washable.

Black. XS to 4XL (18104)

\$44.95 ea.



*Available
with short
sleeves*



Brigade Jacket

Men's semi-fitted cut, long sleeves, thermometer pocket on sleeve, utility pocket on back, apron attachment on collar, stretch fabric, 55% cotton, 42 % polyester, 3% spandex, washable. Black. Black interchangeable buttons included. S to 4XL

Long sleeves (18602)

Short sleeves (18602MC)

\$44.95 ea



Removable Interchangeable Buttons
(19015TORNADO) **\$5.95/set of 7**
(19015SNOWWHITE) **\$5.95/set of 7**

Brigade Joggers

Men's casual fit, two side pockets, two back pockets and a small utility pocket on the thigh, elastic waistband with drawcord, back ankle with elastic, stretch fabric, 55% cotton, 42% polyester, 3% spandex, washable. Grey. XS to 4XL (18104)

\$44.95 ea.

*Available with
short sleeves*



Brigade Jacket

Men's semi-fitted cut, long sleeves, thermometer pocket on sleeve, utility pocket on back, apron attachment on collar, stretch fabric, 55% cotton, 42% polyester, 3% spandex, washable.

Black with black interchangeable buttons included. S to 4XL

Long sleeves (18602)

Short sleeves (18602MC)

\$44.95 ea.



Removable Interchangeable Buttons
(19015CHILIREDD) **\$5.95/set of 7**

Brigade Joggers

Men's casual fit, two side pockets, two back pockets and a small utility pocket on the thigh, elastic waistband with drawcord, back ankle with elastic, stretch fabric, 55% cotton, 42% polyester, 3% spandex, washable. Black.

XS to 4XL (18104) **\$44.95 ea.**

The practical style and casual fit of the Brigade Joggers will take you from work to your daily activities.

Brigade Joggers

Men's casual fit, two side pockets, two back pockets and a small utility pocket on the thigh, elastic waistband with drawcord, back ankle with elastic, stretch fabric, 55% cotton, 42% polyester, 3% spandex, washable. Grey or black.

XS to 4XL (18104) **\$44.95 ea.**





Small utility pocket on thigh.

Brigade Joggers

Women's casual fit, two side pockets, two back pockets and a small utility pocket on the thigh, elastic waistband with drawcord, back ankle with elastic. Stretch fabric, 55% cotton, 42% polyester, 3% spandex, washable. Black or grey. XXS to 4XL (18107) **\$44.95 ea.**

Women's Tammy-T

Fitted cut, ¾ sleeve, V-neck, comfortable, 95% cotton, 5% spandex, washable. Black. XXS to 4XL (18916) **\$17.95 ea.**

Brigade Joggers

Women's casual fit, two side pockets, two back pockets and a small utility pocket on the thigh, elastic waistband with drawcord, back ankle with elastic. Stretch fabric, 55% cotton, 42% polyester, 3% spandex, washable. Grey. (18107) XXS to 4XL **\$44.95 ea.**





Billy
COLLECTION

Kitchen Shirt
Black. S to XXXL (600)
\$23.95 ea.

Shop Online www.tcuniforms.com



Raw Canvas Bib Apron

Set of adjustable cross-back straps with snap buttons, adjustable leather patch, large divided pocket with rivets and a space for pens, towel loop, 100% cotton, washable except for patch. Black with contrast stitching and copper straps.
One size (16804) **\$39.95 ea.**

Raw Canvas Bib Apron

Set of two adjustable and interchangeable snap button straps, large divided pocket with a space for pens, towel loop. 100% cotton, washable. Natural. One size (14807)

\$34.95 ea.

Men's Flex Shirt

Black. S to 4XL (20108)
\$37.95 ea.



Shop Online www.tcuniforms.com



Set of Straps with Leather Patch

Extra straps can be worn with any canvas bib apron from the Billy Collection. Copper. One size (16804S)

\$14.95 ea.



Copper and Charcoal Grey Straps included

Natural and Copper Straps included

Charcoal Grey and Natural Straps included

Raw Canvas Bib Apron

\$34.95 ea.

Set of two adjustable and interchangeable snap button straps, large divided pocket with a space for pens, towel loop. 100% cotton, washable. One size (14807)

Set of Straps

Extra straps to mix and match with 14807 apron. 100% cotton, washable. One size (14807S) **\$9.95 ea.**



Copper



Natural



Charcoal Grey



Men's Short Sleeve Miky-T
 Black. S to XXXL (18917)
 \$16.95 ea.

Women's Short Sleeve Tammy-T
 Black. XXS to 4XL (18915)
 \$16.95 ea.

Shop Online www.tcuniforms.com



Charcoal Grey and Copper Straps included

Natural and Charcoal Grey Straps included

Copper and Natural Straps included

Raw Canvas Waist Apron

Set of two adjustable and interchangeable snap button straps, large divided pocket with a space for pens, towel loop, 15" length, 100% cotton, washable. One size (14808) \$29.95 ea.

Set of Straps

Extra straps to mix and match with 14808 and 15806 aprons, 100% cotton, washable. One size (14808S) \$7.95 ea.



Charcoal Grey

Copper

Natural

You don't have to compromise on comfort while wearing our Spandex blend blouses and shirts.

1. Havana Blouse

Lightly tailored, front and back cut, $\frac{3}{4}$ sleeves, 61% polyester, 36% cotton, 3% spandex, washable. Black. XXS to 4XL (10131) **\$37.95 ea.**

Raw Canvas Waist Apron

Two sets of adjustable and interchangeable snap button straps, one natural and one copper, large divided pocket and a space for pens, towel loop, 15" length, 100% cotton, washable. Natural. One size (14808) **\$29.95 ea.**

(logo not included).

2. Men's Flex Shirt

Classic cut, 1 breast pocket, adjustable cuffs, long sleeves, 61% polyester, 36% cotton, 3% spandex, washable. Black. S to 4XL (20108) **\$37.95 ea.**

Raw Canvas Bistro Apron

Two sets of adjustable and interchangeable snap button straps, one natural and one copper, large divided pocket and a space for pens, towel loop, 23" length, 100% cotton, washable. Natural. One size (15806) **\$31.95 ea.**

(logo not included).



1

2

Men's City Shirt

Slim fit, no pocket, front and back seaming, long sleeves, adjustable cuffs, 61% polyester, 36% cotton, 3% spandex, washable. White. S to XXXL (13301)

\$39.95 ea.



Shop Online www.tcuniforms.com



Adjustable Leather Neck Strap

One size (16800LS1)

\$10.95 ea.

*Can be worn with
14807 et 16814 bib apron
from the Billy Collection.*

Striped Denim Waist Apron

\$26.95 ea.

Wide waist ties, large divided pocket with a space for pens, 15" length, 100% cotton, washable. Navy with white stripes/solid navy waist ties. One size (14810)



Striped Denim Bib Apron

\$31.95 ea.

Adjustable neck, wide waist ties, large divided pocket with a space for pens, small breast pocket, 100% cotton, washable. Navy with white stripes/solid navy waist ties. One size (14809)



Shop Online www.tcuniforms.com



Women's Flex Shirt

\$37.95 ea.

Regular fit, no pocket, long sleeves, adjustable cuffs, 61% polyester, 36% cotton, 3% spandex, washable. XS to XXXL (20109)

Striped Denim Waist Apron

Wide waist ties, large divided pocket with a space for pens, 15" length, 100% cotton, washable. Navy with white stripes/solid navy waist ties. One size (14810) **\$26.95 ea.**



*Natural and Black
Straps Included*

Raw Canvas Billy Riveted Bib Apron

Set of two adjustable and interchangeable snap button straps, large divided pocket with rivets and a space for pens, towel loop, 33" long, 100% cotton, washable. One size.

Black apron : Natural and black straps included (16814)
\$34.95 ea.

Raw Canvas Billy Riveted Bistro Apron

Set of two adjustable and interchangeable snap button straps, large divided pocket with rivets and a space for pens, towel loop, 23" length, 100% cotton, washable. One size.

Black apron : Natural and black straps included (16816)
\$31.95 ea.

Raw Canvas Billy Riveted Waist Apron

Set of two adjustable and interchangeable snap button straps, large divided pocket with rivets and a space for pens, towel loop, 15" length, 100% cotton, washable. One size.

Black apron : Natural and black straps included (16815)
\$29.95 ea.

Women's 3/4 sleeve Tammy-T

Black. XXS to 4XL (18916)

\$17.95 ea.





Women's Denim Shirt
Semi-slim fit, two breast pockets with flap, long sleeves, adjustable cuffs, 100% cotton, washable. Blue denim. XXS to XXL (14312) **\$39.95 ea.**



Men's Denim Shirt
Semi-slim fit, two breast pockets with flap, long sleeves, adjustable cuffs, 100% cotton, washable. Blue denim. XS to XXXL (14313) **\$39.95 ea.**



**Women's Short Sleeve
Miso Chef Coat**

Semi-slim fit, thermometer pocket on left sleeve, underarm eyelet vents, mandarin collar, reversible closure, 65% polyester, 35% cotton, washable. White. XS to XXXL (859) **\$39.95 ea.**

Denim Bib Apron

Adjustable neck, waist ties, large divided pocket with a space for pens, small breast pocket, 100% cotton, washable. Dark denim/light denim waist ties. One size (14811) **\$29.95 ea.**



Denim Bib Apron

Adjustable neck, waist ties, large divided pocket with a space for pens, small breast pocket, 100% cotton, washable. Dark denim/light denim waist ties. One size (14811) **\$29.95 ea.**

*Dark denim/light
denim waist ties.*



*Black denim/light
denim waist ties.*



GUSTO

Men's Gusto Chef Coat
Divided thermometer pocket on left sleeve, reversible closure, 10 plastic sewn on buttons of same colour as coat, underarm eyelet vents, 65% polyester, 35% cotton, washable.

Long sleeves:
S to XXXL (810)

Short sleeves:
S to XXXL (870)
\$39.95 ea.

Chef Square Apron
Slim waist ties, no pocket, 29" length, 65% polyester, 35% cotton, washable. Black. One size (624) **\$12.95 ea.**

Raw Canvas Cap
Adjustable velcro strip closure on back, 100% cotton. Copper. One size. (17005) **\$13.95 ea.**



Copper



Grey



Black

Raw Canvas Cap

Adjustable Velcro strip closure on back. One size (17005) **\$13.95 ea.**



White

Grey

Black

Men's Gusto Chef Coat

Thermometer pocket on left sleeve, reversible closure, 10 plastic sewn on buttons of same colour as coat, underarm eyelet vents, 65% polyester, 35% cotton, washable.

Long sleeves: S to XXXL (810)
Short sleeves: S to XXXL (870)
\$39.95 ea.

*Available
with long
sleeves*



Gusto Bib Apron

Adjustable neck, slim waist ties, available with a large divided pocket with a space for pens or without pockets, 65% polyester, 35% cotton, washable. Grey. One size (622) **\$16.95 ea.**

Available with pocket:
One size (632) **\$18.95 ea.**



Gusto

Miso

Available with short sleeves

Women's Gusto Chef Coat

Divided thermometer pocket on left sleeve, fitted cut, mandarin collar, reversible closure, 10 plastic sewn on buttons of same colour as coat, underarm eyelet vents, 65% polyester, 35% cotton, washable. Grey.

Long sleeves: XS to XXXL (828)
Short sleeves: XS to XXXL (831)
\$39.95 ea.

Available with short sleeves

Women's Miso Chef Coat

Divided thermometer pocket on left sleeve, fitted cut, mandarin collar, reversible closure, 10 plastic sewn on buttons of same colour as coat, underarm eyelet vents, 65% polyester, 35% cotton, washable. Black or white.

Long sleeves: XS to XXXL (858)
Short sleeves: XS to XXXL (859)
\$39.95 ea.

Black

Gunmetal Grey

White



**100%
Microfiber
Fabric.**
*to keep skin cool
and dry.*

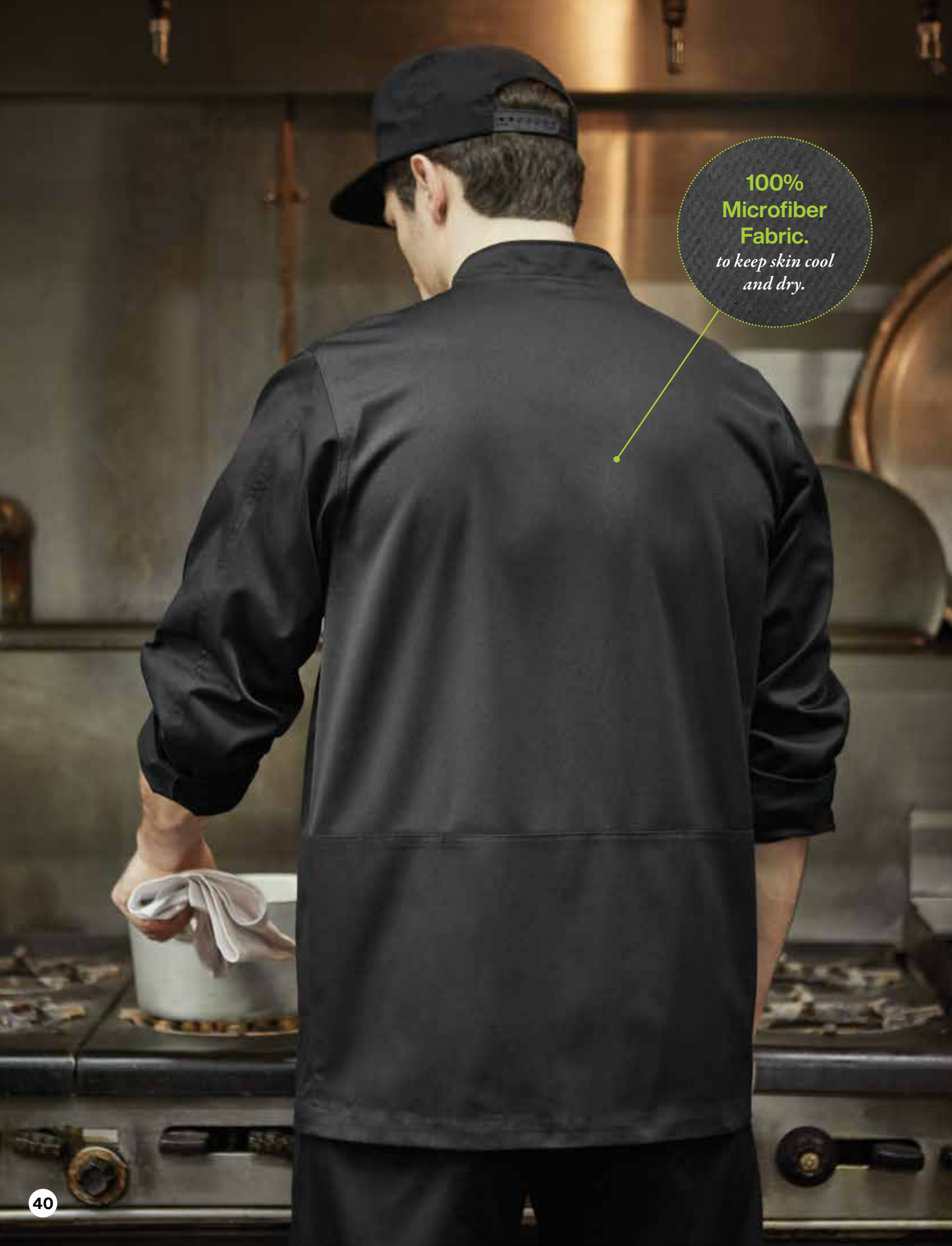
Shop Online www.tcuniforms.com

Women's Breeze Chef Coat

Long sleeves, thermometer pocket on sleeve, hidden snap buttons, 65% polyester, 35% cotton, 100% polyester back, washable. Gunmetal grey. XS to XXXL (15601) **\$44.95 ea.**

*Available with short sleeves
(15601MC)*





**100%
Microfiber
Fabric.**
*to keep skin cool
and dry.*

Men's Breeze Chef Coat

Long sleeves, thermometer pocket on sleeve, hidden snap buttons, 65% polyester, 35% cotton, 100% polyester back, washable. S to XXXL (15602) **\$44.95 ea.**

Available with short sleeves (15602MC)



Black

*Gunmetal
Grey*

White



Chef Pants

Styles for men and women

1. Men's Miky-T

Short sleeves, fitted cut, crew neck, comfortable, 95% cotton, 5% spandex, washable. Grey. S to XXXL (9552) **\$16.95 ea.**

Men's Chef Pants

Two side pockets, two back pockets and small pocket on thigh, 2 inch elastic waistband with drawstring, 65% polyester, 35% cotton, washable. (10354) Black. XS to 5XL **\$36.95 ea.**

2. Women's Chef Pants

Two side pockets, two back pockets and small pocket on thigh, elastic drawstring waist, 65% polyester, 35% cotton, washable. (10334) Black. XXS to 4XL **\$36.95 ea.**



Chef's Square Apron

Waist ties, no pocket, 29" length. 65% polyester, 35% cotton, washable.

White. One size (624) **\$10.95 ea.**

Black. One size (624) **\$12.95 ea.**

Shop Online www.tcuniforms.com

Flat Peak Cap

Adjustable back strap.
100% cotton. Black.
One size (14001) \$12.95 ea.

Gildan T-Shirt

Short sleeves. 50% polyester,
50% cotton, washable. White
(9500) S to XXL \$10.95 ea.

100% Nylon Waterproof Bib Apron

Adjustable neck, waist ties,
no pocket, washable. black.
One size (10573) \$21.95 ea.



Zip-Up Jacket

Long sleeves, full length
zip, two front pockets,
microfleece lining,
100% polyester jersey knit,
washable. Black.

Women: XS to XXXL (14409)

Men: S to XXXL (14408)

\$44.95 ea.

Chill-t Polo

Raspberry Red. XS to XXXL
(13903) \$29.95 ea.

Also available for men:

XS to XXXL (9540)

\$29.95 ea.





Kitchen Shirt

Straight fit, short sleeves, breast pocket, 65% polyester, 35% cotton, washable. Black. XS to 4XL (600) **\$23.95 ea.** (logo and crest not included).



Chill-T Polo with Fit4™ Finish

Short sleeves, FIT4™ finish moisture management fabric to keep skin cool and dry, comfortable, durable, 100% polyester microfiber, easy-care, washable. Black.

Men: XS to XXXL (9540)

Women: XS to XXXL (13903)

\$29.95 ea. (logo not included).



Derby Polo

Fitted cut, button-down collar, short sleeves, FIT4™ finish moisture management fabric to keep skin cool and dry, comfortable, durable, 100% polyester microfiber, easy-care, washable.

Grey or black. XS to XXXL

Women (15909)/Men (15910)
\$29.95 ea.



Raw Canvas Bistro Apron
Black. Natural and black straps included. One size (16816)
\$31.95 ea.

Raw Canvas Waist Apron
Black. Natural and black straps included. One size (16815)
\$29.95 ea.



Ribbed Jersey

Plain Jersey

Women's ¾ Sleeve Nex-T
 V-neck, fitted cut,
 95% polyester,
 5% spandex, washable.
 Black. XS to XXXL
 (22902) **\$29.95 ea.**

Bianca Top
 V-neck, ¾ sleeves, fitted
 cut, 92% polyester,
 8% spandex, washable.
 Black. XS to XXXL (15900)
\$27.95 ea.



 *Made in Canada*

Leather Pouch

Adjustable straps with metal clasp,
 4 pockets, one with zip closure, 9½". Black.

One size (16802) **\$42.95 ea.**



Short Leather Apron

Ajustable elastic belt with metal clasp, seven
 pockets, one with zip-closure, 7" length. Black.

One size (013) **\$44.95 ea.**

Shop Online www.tcuniforms.com



Server Pouch

\$18.95 ea.

Adjustable belt with plastic clasp, four pockets, one with zip closure, 10" length. 100% polyester, washable. Black. One size (13001)



7 Pocket Waist Apron

Adjustable belt with plastic clasp, zip-closure pocket, 10" length. 100% polyester, washable. Black. One size (14800) **\$17.95 ea.**



3 Pocket Short Waist Apron

Adjustable elastic belt with metal clasp, 9" length, 100% polyester, washable. Black. One size (300) **\$16.95 ea.**

4 Pocket Apron

Waist apron, 12" length, 65% polyester, 35% cotton, washable. Black. One size (10530) **\$14.95 ea.**





2 styles, one dress.
The scoop neckline can be worn on the front or the back.

Reversible Dress

Fitted cut, 5/8 sleeve, comfortable, 95% cotton, 5% Spandex, washable. Black. XXS to XXL (18702)

\$26.95 ea.
(logo not included)



\$28.95 ea.

\$26.95 ea.

T-shirt Dress

Fitted cut, V-neck, comfortable, 95% cotton, 5% Spandex, washable. Black. XXS to XXL

Short sleeves (18700) \$26.95 ea.

3/4 sleeves (18701) \$28.95 ea.

(logo not included).

Leather Pouch

Adjustable straps with metal clasp, 4 pockets, one with zip closure, 9 1/2". Black. One size (16802) **\$42.95 ea.**



Men's Miky-T
Short sleeves, fitted cut, crew neck, comfortable, 95% cotton, 5% spandex, washable. Grey. S to XXXL (9552) **\$16.95 ea.**
(logo not included).

Women's Tammy-T
Short sleeves, fitted cut, V-neck, comfortable, 95% cotton, 5% spandex, washable. Grey. XS to 4XL (9571) **\$16.95 ea.**
(logo not included).

Bistro II Apron (23 inches)
Slim waist ties, large divided pocket with a space for pens, 65% polyester, 35% cotton gangster stripes, washable. Grey with white stripes. One size (10525) **\$17.95 ea**

Our Miky-T, Mary-T and Tammy-T T-shirts are soft to the touch and comfortable thanks to the perfect blend of cotton and spandex.



Men's Miky-T
Short sleeves, fitted cut, crew neck, comfortable, 95% cotton, 5% spandex, washable. Black. S to XXXL (18917) **\$16.95 ea.**



Women's Mary-T
Short sleeves, fitted cut, crew neck, comfortable, 95% cotton, 5% spandex, washable. Black. XXS to 4XL (18918) **\$16.95 ea.**



Women's Tammy-T
Short sleeves, fitted cut, V-neck, comfortable, 95% cotton, 5% spandex, washable. Black. XXS to 4XL (18915) **\$16.95 ea.**



Women's 3/4 Sleeve Tammy-T
Fitted cut, V-neck, comfortable, 95% cotton, 5% spandex, washable. Black. XXS to 4XL (18916) **\$17.95 ea.**

Havana Blouse

Lightly tailored, front and back cut, ¾ sleeves, shirt collar, 61% polyester, 36% cotton, 3% spandex, washable. French blue. XXS to 4XL (10131) **\$37.95 ea.**

Other colours available



Black



Raspberry Red



White



Lime Green



Grey



Red Wine



Eggplant



Dark Taupe



French Blue

Havana Blouse

Slim fit, front and back seaming, ¾ sleeves, 61% polyester, 36% cotton, 3% spandex, washable. White. XXS to 4XL (10131) **\$37.95 ea.**

Scarf Tie (2013-6CT) \$17.95 ea.



Shop Online www.tcuniforms.com



Men's City Shirt

Slim fit, no pocket, front and back seaming, long sleeves, adjustable cuffs, 61% polyester, 36% cotton, 3% spandex, washable. White. S to XXXL (13301) **\$39.95 ea.**

Women's Flex Shirt

Regular fit, long sleeves, adjustable cuffs, 61% polyester, 36% cotton, 3% spandex, washable. White. XS to 4XL (20109) **\$37.95 ea.**

Bib Apron

Adjustable neck, wide waist ties, large divided pocket with a space for pens, 100% polyester, easy-care, highly durable, washable. Black. One size (10560) **\$19.95 ea.**

Ideal for service.

Not recommended in front of ovens or near sources of excessive heat.

Classic Bow Tie

Black. (716) **\$10.95 ea.**



Wing Collar Tuxedo Shirt

Classic fit, pleated front, convertible/stud front, removable stud buttons included, 65% polyester, 35% cotton, washable. White.

Men's sleeve length

34"/35", XS to XXXL (10107H)

\$32.95 ea.

Women's sleeve length

30"/31", 2 to 24 (10107F)

\$32.95 ea.

Bistro II Apron (23 Inches)

Slim waist ties, large divided pocket with a space for pens, 65% polyester, 35% cotton, washable. Black.

One size (10535) **\$16.95 ea.**

Classic Bow Tie

100% satin polyester, dry clean. Black. (716) **\$10.95 ea.**

Tie
100% polyester, dry clean.
\$17.95 ea.



2013-11



2013-1



2017-1

Eight-Pocket Service Apron

Eight pockets, adjustable neck, 100% polyester, easy-care, washable. Black. One Size (10548) **\$28.95 ea.**

Wing Collar Tuxedo Shirt

Classic fit, pleated front, convertible/stud front, removable stud buttons included, 65% polyester, 35% cotton, washable. White. Women's sleeve length 30"/31". 2 to 24 (10107F) **\$32.95 ea.**



Tie
(2017-1)
\$17.95 ea.

Ideal for service.

Not recommended in front of ovens or near sources of excessive heat.



Banquet Gloves

100% cotton, one size (718)
\$3.95/pair

Women's Romanza II Vest

Lined, 2 front pockets, adjustable back half belt, 100% polyester "comfort stretch", washable. Black. 2 to 24 (10488) \$51.95 ea.

Women's Flex Shirt

Regular fit, long sleeves, adjustable cuffs, 61% polyester, 36% cotton, 3% spandex, washable. White. XS to 4XL (20109) \$37.95 ea.

Floppy Bow Tie

100% satin polyester, dry clean. One size. Black. (715B) \$9.95 ea.



Classic Bow Tie

100% satin polyester, dry clean. Black. (716) \$10.95 ea.



Floppy Bow Tie

100% satin polyester, dry clean. One size. Black. (715B) \$9.95 ea.



Bow Tie

100% satin polyester, dry clean. Black with silver stripes. (719) \$17.95 ea.



Men's City Shirt

Slim fit, no pocket, front and back seaming, long sleeves, adjustable cuffs, 61% polyester, 36% cotton, 3% spandex, washable. Black. S to XXXL (13301) **\$39.95 ea.**

Bistro I Apron (30 Inches)
White (10534) **\$17.95 ea.**

Tie
(19009) **\$17.95 ea.**

Tie Clip
Silver. 1½" (4 cm) (15001) **\$7.95 ea.**

Tie
\$17.95 ea.

100% polyester,
dry clean.



19007



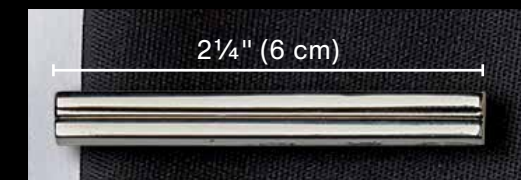
19008



19009

Tie Clip

Silver.
1½" (4 cm) (15001)
2¼" (6 cm) (15002)
\$7.95 ea.





Men's City Shirt

\$39.95 ea.

Slim fit, no pocket, front and back seaming, long sleeves, adjustable cuffs. 61% polyester, 36% cotton, 3% Spandex. Washable. Black, white or grey. S to XXXL (13301)

Men's Vest

Front flap pockets, functional breast pocket and left inner pocket, fully lined, 96% polyester, 4% spandex. washable. Black. 36 to 54 (14402-1) \$57.95 ea.

Men's Fitted City Shirt

Grey. S to XXXL (13301) \$39.95 ea.

Bistro II Apron (23 Inches)

Black with white stripes. One size (10525) \$17.95 ea.

Tie

100% polyester, dry clean. (19008) \$17.95 ea.

Tie Clip

Silver. 1½" (4 cm) (15001) \$7.95 ea.



Shop Online www.tcuniforms.com

Long Sleeve – Havana Blouse
61% polyester, 36% cotton,
3% spandex, washable. White.
XXS to 4XL (18300) **\$41.95 ea.**
(Available in black).

Women's Romanza Pants
Two flat front false pockets, belt
loops, back cut for more comfort,
100% polyester "comfort stretch",
washable. Black. 00 to 24 (18101)
\$51.95 ea.



Romanza Skirt

Unlined, back pleat, no pockets, front cut,
100% polyester "comfort stretch", washable. Black.
00 to 24 (10232) **\$39.95 ea.**



Women's Romanza Pants

Two flat front false pockets, belt loops, back cut for
more comfort, 100% polyester "comfort stretch",
washable. Black. 00 to 24 (18101) **\$51.95 ea.**



Women's Blazer

Black. Size 1 also available.
00 to 24 (14500-1) **\$128.95 ea.**

Women's Classic Straight Skirt

Black. Size 1 also available.
00 to 24 (14200-1) **\$57.95 ea.**

Long Sleeve - Havana Blouse

61% polyester, 36% cotton,
3% spandex, washable. White.
XXS to 4XL (18300) **\$41.95 ea.**

Long Sleeve

Jersey Vest

95% cotton, 5% spandex,
washable. Black. XXS to XXXL
(18402) **\$30.95 ea.**

T-shirt Dress

Fitted cut, V-neck, comfortable,
95% cotton, 5% Spandex,
washable. Black. XXS to XXL
Short sleeves (18700)
\$26.95 ea.



Eva Pant Suit

Comfort-fit back pleats, trim on collar and sleeves, two pockets, washable, elasticized-waist pants, 65% polyester, 35% combed cotton. Black. 2 to 24

Top (10716) \$34.95 ea.

Pants (10302) \$25.95 ea.



Cobbler Apron

Practical divided pocket with a space for pens, adjustable sides, 65% polyester, 35% combed cotton, washable. Black. Regular or large (1006) **\$24.95 ea.**

Havana Blouse

Slim fit, front and back seaming, ¾ sleeves, 61% polyester, 36% cotton, 3% spandex, washable. Grey. XXS to XXXL (10131) **\$37.95 ea.**





MOBB

Stretch V-Neck Scrubs Top for Women

Two front patch pockets, pen pocket on left sleeve, black stretch side panels, 65% polyester, 32% rayon, 3% spandex, washable. Charcoal. XXS to XXXL (T3020) **\$40.95 ea.**



MOBB

Mobb · V Neck Scrub Top for Men

Breast pocket, pencil pocket on left sleeve, stretch side panels in black, 65% polyester, 35% cotton, washable. Charcoal. XS to XXXL (409T) **\$34.95 ea.**



Lime Green



French Blue



Raspberry



Sky Blue

Black Scrub Set

Bella Stretch Scrub Top

No trim, crossover v-neck, four front pockets, short sleeves, 55% cotton, 42% polyester, 3% spandex, washable. XS to XXXL (10727) **\$32.95 ea.**

Bella Stretch Scrub Top with Contrast Piping

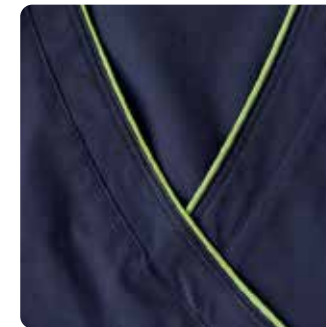
Crossover v-neck with contrasting trim, four front pockets, short sleeves, 55% cotton, 42% polyester, 3% spandex, washable.

Available trim colours (made to order/no returns).

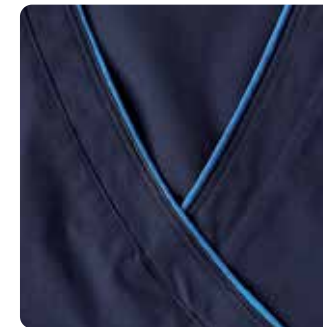
Lime green, French blue, raspberry, sky blue. XS to XXXL (10727P) **\$35.95 ea.**

Bella Stretch Scrub Pants

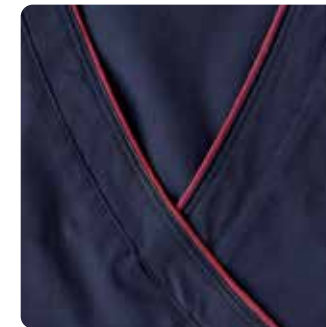
Elastic waist with drawstring, two front pockets, 3 patch pockets on the sides, reinforced knee patches for added durability, 55% cotton, 42% polyester, 3% spandex, washable. XS to XXXL (10386) **\$32.95 ea.**



Lime Green



French Blue



Raspberry



Sky Blue

Navy Scrub Set

Bella Stretch Scrub Top

No trim, crossover v-neck, four front pockets, short sleeves, 55% cotton, 42% polyester, 3% spandex, washable. XS to XXXL (10727) **\$32.95 ea.**

Bella Stretch Scrub Top with Contrast Piping

Crossover v-neck with contrasting trim, four front pockets, short sleeves, 55% cotton, 42% polyester, 3% spandex, washable.

Available trim colours (made to order/no returns).

Lime green, French blue, raspberry, sky blue. XS to XXXL (10727P) **\$35.95 ea.**

Bella Stretch Scrub Pants

Elastic waist with drawstring, two front pockets, 3 patch pockets on the sides, reinforced knee patches for added durability, 55% cotton, 42% polyester, 3% spandex, washable. XS to XXXL (10386) **\$32.95 ea.**



Caribbean Blue

Charcoal Grey

Deep Orchid



Mobb V Neck Scrub Top

Two hidden front pockets, pencil pocket on left sleeve, stretch side panels in black, 65% polyester, 35% cotton, washable. Caribbean blue, charcoal grey, deep Orchid. XXS to XXXL (324T) **\$33.95 ea.**

Elastic Waist Mobb Scrub Pants
Black. XXS to XXL (312P)
\$34.95 ea.

Work pants

\$39.95 ea.

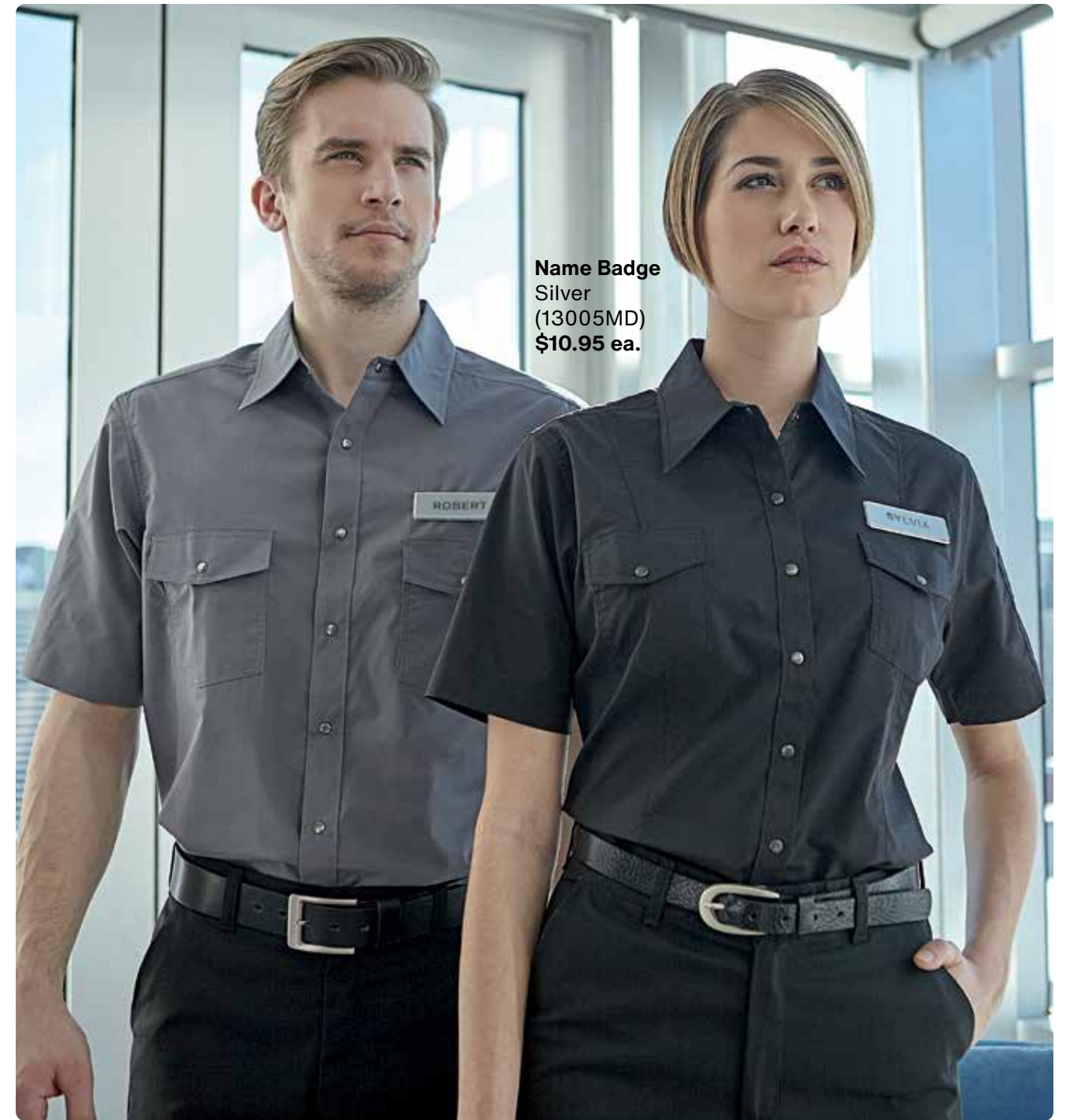
Unisex, flat front, 65% polyester,
35% cotton, washable.
Black or navy. 28 to 52 (509)



Cargo Pants

\$60.95 ea.

Unisex, flat front, two large cargo
pockets with flaps and buttons,
65% polyester, 35% cotton,
washable. Black or navy.
28 to 52 (15100)



Name Badge
Silver
(13005MD)
\$10.95 ea.

Mekanik Shirt

Men's Short Sleeve

Loose fit, two breast pockets with flap, pocket
on left sleeve, snap buttons, 61% polyester,
36% cotton, 3% spandex, washable.
Grey or black. XS to XXXL (13302) **\$37.95 ea.**

Also available in slim fit with long sleeves.

Women's Short Sleeve

Slim fit, two breast pockets with flap, pocket
on left sleeve, snap buttons. 61% polyester,
36% cotton, 3% spandex, washable.
Grey or black. XS to XXXL (14301) **\$37.95 ea.**

Also available with long sleeves.

Shop Online www.tcuniforms.com

Embroidery Guide

Logo (Set Up Fee \$85.00)

Price list for fonts and logos

(Embroidered directly on garment).

Pocket size logo 3½" × 3½" Maximum Size.

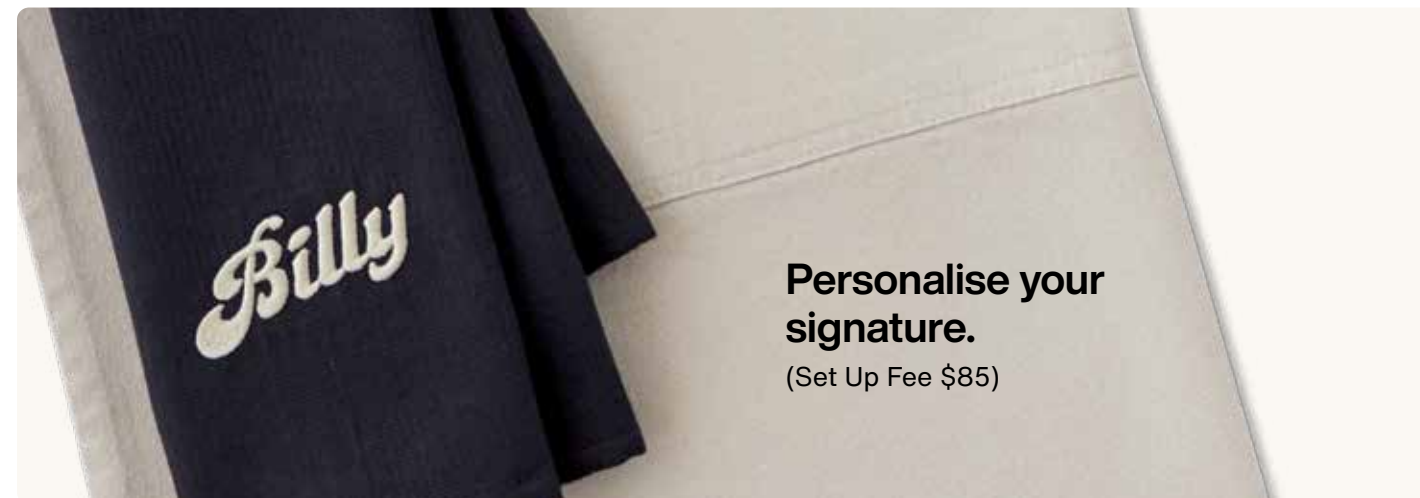
(Embroidery format: DST).

Image formats accepted to create an embroidery file are: JPG, PDF, EPS, AI.

Scanned images also accepted.

Quantity	Price
1 to 12	\$7.80 ea.
13 to 24	\$7.50 ea.
25 to 50	\$7.20 ea.
51 to 100	\$6.60 ea.
101 to 200	\$6.00 ea.
Crests only	\$8.75 ea.
Affix crest to garment	\$4.00 ea.
Set up fee for logo and signature	\$85.00 ea. pocket size

- Prices for oversize logos upon request.
- No returns or refunds on embroidered items.
- All embroidery payable before production.
- Town & Country Uniforms Inc. reserves the right to modify prices without notice.



Personalise your signature.

(Set Up Fee \$85)

Choice of fonts and colours (no set up fee)

Eurostyle

Steve Parent
Chef Exécutif
Le Bistro

Brantfort

Steve Parent
Chef Exécutif
Le Bistro

Script

Steve Parent
Chef Exécutif
Le Bistro

Staccato

Steve Parent
Chef Exécutif
Le Bistro

Staccato et Eurostyle

Steve Parent
Chef Exécutif
Le Bistro

Script and Eurostyle

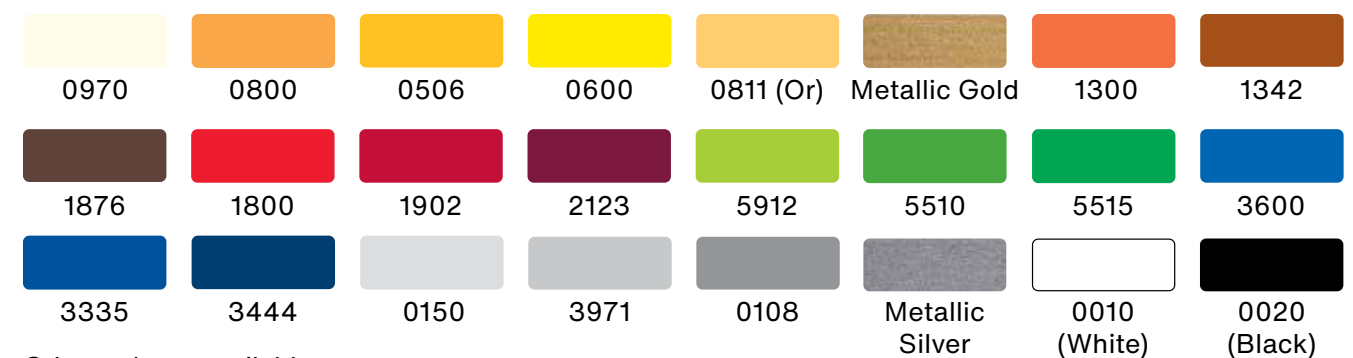
Steve Parent
Chef Exécutif
Le Bistro

Personalise your signature. (Set Up Fee \$85.00)

Charlotte Simon

MARIO RUSSO

Colour choices



Other colours available upon request.

Silkscreen

No Minimum to Order

Printing cost:

- 1 to 24 items: **\$4.75 ea.**
- 25 to 50 items: **\$4.45 ea.**
- 51 to 100 items: **\$4.15 ea.**
- 101 to 200 items: **\$3.75 ea.**
- 201 items and more: **\$3.45 ea.**

- No set-up fee.
- Maximum print size: 12" x 14"
- No returns on printed items.
- All printed garments are payable before production.

Customization on some products may not be possible. Please contact us, a member of our customer service will be happy to advise you.

Town & Country Uniforms Inc. reserves the right to change prices without notice. Town & Country Uniforms Inc. reserves the right to accept or reject certain logos due to their complexity.

Send us your logo in vector graphics.

No returns or refunds on printed items.
All printed items payable before production.

Town & Country Uniforms Inc. reserves the right to modify prices without notice. Town & Country Uniforms Inc. reserves the right to accept or refuse logos, due to the complexity of the design.



Simplify your purchase with our signature service

UTC+

- + No minimum order required.
- + \$11.50 flat rate freight charge to anywhere in Canada. *
- + Speak directly to one of our customer service representatives.
- + Fast delivery.
- + Large in-stock inventory.
- + Exchanges accepted. **
- + No re-stocking charges on merchandise returns. ***
- + Personalized programs for restaurant and hotel chains.
- + Embroidery, heat transfer and screen printing services available.
- + Shop online www.tcuniforms.com

***TRANSPORT FEES:** Transport fees of \$11.50 only apply to in-stock merchandise at going rate at time of ordering. Certain restrictions and additional shipping fees may apply.

DELIVERIES: Although we do our best to expedite orders as quickly as possible, we do not guarantee an exact delivery date. All orders are subject to product availability and shipping destination.

PRICE: Town & Country Uniforms reserves the right to modify prices, freight fees and specifications without notice. Merchandise will be invoiced based on the going rate at time of ordering. Prices in CAD.

ORDERS: Please note that orders are processed during working hours: Monday to Friday between 9 am and 5pm. All orders placed during closing hours will be treated in the same order they were received the next business day.

****RETURNS:** Merchandise can be returned, exchanged or credited so long as: Merchandise is not used or washed, must be in its original packaging, in perfect condition with its documentation and/or accessories (if applicable), and is still available in our current catalogues.

RETURN PROCEDURES:



1. Call customer service to request a Return Merchandise Authorisation number (RMA).
2. Return merchandise with a copy of your invoice identifying the returned items to

our headquarters: 1975 Dagenais West, Laval, Quebec, H7L 5V1.
N.B. Town & Country Uniforms does not accept collect returns; freight charges for all returns are payable by the purchaser.

3. Please identify your package with the RMA number on the outside of the box.
4. Please identify your return address.
5. No returns will be accepted without an RMA number.

• Ensure that items to be returned were purchased within 60 days from date of invoice. Please note that a reimbursement may only be given for orders returned within 30 days from date of invoice.

- Refunds will be issued via the same method of payment used during purchasing.
- ***Town & Country Uniforms reserves the right to accept or refuse any return of merchandise at all times.

PAYMENT: Visa, Amex, Mastercard.  
Payment in full will be charged to your credit card at time of ordering.

LEGAL: All translation, reproduction or adaptation of text, illustration and photographs, by any means whatsoever, is strictly prohibited without written permission from Town & Country Uniforms Inc.

We are not responsible for printing errors. Taxes and shipping charges are extra. Town & Country Uniforms will not be held responsible for the sales policies set forth by any distributor or their associates.

► Uniform maintenance guide

Please note the following:

Please make sure to try on all garments before washing, hemming, or altering in any way in order to make sure that all sizing is correct; garments that have been washed, worn, or hemmed may not be returned or exchanged.

IMPORTANT

Please read washing instruction labels carefully; Some garments may require dry-cleaning.

WASHING

Garments should be washed before wearing for the first time in order to eliminate any excess dye. **Always wash garments inside-out** in cold water on the "Permanent Press" cycle using a mild detergent. **Never use detergent with bleach.** Using bleach in your wash will damage your garments.

Never mix your uniforms in the washing machine with jeans or towels; this will cause damage to natural and synthetic fibres.

You must wash your different coloured garments separately: whites together, darks together, and pastel colours together.

To remove stains:

It is highly recommended that you do not let a stain set in before treating, as it will become more difficult to remove. Squirt a little dishwashing soap (for greasy stains) or stain remover such as *Spray n' Wash*®, *Oxyclean*® or *Shout*® (for all other stains) and wait a few minutes before washing (always follow manufacturer's instructions).

DRYING

Hanging all garments to dry is recommended to keep them looking their best. If using a dryer, choose the "Permanent Press" cycle at a low temperature; avoid drying on high heat. Remove garments from the dryer at the end of the cycle to avoid creasing.

IRONING

Set iron to medium heat; high temperatures can singe or burn fabrics and damage them permanently. To avoid the "shiny effect" caused by ironing on high heat, iron inside-out or use a press cloth over your garments and set the iron to "steam".

Chill-T Polo

Short sleeves, FIT4™ finish moisture management fabric to keep skin cool and dry, comfortable, durable, 100% polyester microfiber, easy-care, washable. Raspberry. *Other colours available.*

Men:

XS to XXXL (9540)

Women:

XS to XXXL (13903)

\$29.95 ea.



UTC TOWN & COUNTRY
UNIFORMS

Reach us at 1-800-361-0388
or by calling our head office or one of our contact points

Laval HEAD OFFICE

1975 Dagenais Boulevard West
Laval (Quebec) H7L 5V1

Phone: 450-622-5107
Toll Free: 1-800-361-0388
Fax: 450-622-4632
contact@tcuniforms.com

Monday to Friday 9 am to 5 pm

Toronto CONTACT POINT

Phone: 416-241-8286
Toll Free: 1-877-571-8286

Sherbrooke CONTACT POINT

Phone: 819-864-0101
Toll Free: 1-855-864-0101

Payment:   

MasterCard, Visa, American Express.

Payment in full will be charged to your credit card at time of ordering.

Shop Online

www.tcuniforms.com

Please refer to our website for our terms, policies and conditions.



facebook.com/uniformestowncountry
instagram.com/utc.canada