



LIGHTNING 1.25"

FEATURES

- Compact size ideal for mounting inside the wheel
- One piece lightweight cast aluminum housing
- Square seal piston retraction for constant running clearance
- Long-lasting quick change pads

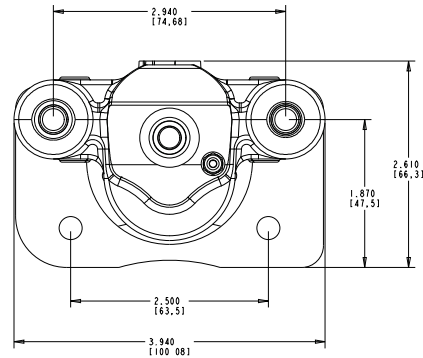


SPECIFICATIONS

Weight	0,82 Kg
Rotor Thickness	3,96 mm - 6,35 mm
Lining Type	Semi-Metallic, Sintered, Non-Asbestos Organic
Piston Diameter	31,75 mm
Max Pressure	103,42 bar
Fluid Type	Brake Fluid
Fluid Inlet	Center
Bleeder	3:00, 9:00

Specifications are guidelines only and subject to change. Consult Hayes Performance Systems for specific model, part number, and assembly drawings -contact@hbpsi.com.

REFERENCE DIMENSIONS



TORQUE INFORMATION

