

SLAYER ALLOY



TABLE OF CONTENTS

Introduction	3
Shrediquette	3
Getting to know your bike	4
Basic set-up	5
Shock eyelet bearing	6
Shock set-up	7
Ride-4	8
Critical dimensions	8
Pro tips & tricks	9
Exploded view	9
Full list of parts	10
Small-parts kits	12
Warranty information	14



Rider: Carson Storch
Photo: Margus Riga
Location: Virgin, Utah

INTRODUCTION

The ultimate weapon, the Slayer is meant for riding fast and sending it deep. Designed to be able to pedal to the top of any mega descent, this bike allows you to shred corners, hit gaps, and ride harder than you ever thought possible.

Whether you're smashing through the roughest trails imaginable or scrubbing lips in the park, the Slayer is built for those who charge ahead. We've made it longer and slacker, with better small bump sensitivity and a more progressive end stroke. For those who like to fine tune their ride before they shred, we kept the RIDE 4™ adjustment system to allow for further geometry and ride feel customization. Rocky Mountain led the original freeride movement, and the Slayer continues the legacy of shredding.

This manual contains important safety, maintenance and user information. Read and understand it thoroughly before your first ride on your new Rocky Mountain bicycle. This material applies only to the specific platform you have chosen and should be used in conjunction with your Rocky Mountain Owner's Manual, which is included with your bike. Please read the Owner's Manual before your first ride. If you do not have a copy of the Owner's Manual, you can get it from your nearest authorized Rocky Mountain dealer.

Rider: Carson Storch
Photo: Margus Riga
Location: Virgin, Utah

SHREDIQUETTE

Riders

Always be courteous to other trail users. Use extra caution around domestic animals, such as dogs and horses. Give other trail users right-of-way in all situations, during both climbing and descending.

Trail

Only ride your bicycle on trails and paths sanctioned for bicycle use. Follow all local laws and regulations. As for all trail users, care should be taken to avoid impacts on the trail or environment. Do not skid on or modify trails.



GETTING TO KNOW YOUR BIKE



Technical details

- Designed to shred hard, the Slayer's front triangle means it's bike park tough and ready for big mountain charging.
- We're still metal fans, and we have an all-new hydroforming process that yields a crazy strong frame as well.
- A FORM™ alloy rear triangle increases resistance against trail abuse, shuttle rub, and chairlift dings.
- The RIDE-4™ adjustment system allows riders to quickly fine tune their geometry and suspension with a pair of Allen keys.
- We've increased the reach, made the seat tube angle steeper, lengthened the chainstays, and designed for a 44 mm offset fork. The Slayer was designed for speed, while maintaining its trail manners.
- Improved small bump compliance and reduced pedal kick, while providing increased mid-stroke sensitivity and end-stroke progression.
- Sealed bearings at the shock eyelet dramatically improve shock sensitivity (aftermarket shock compatible).
- The result is a sensitive yet supportive feeling platform that's dialed in for bottom out resistance with both coil and modern air shocks.
- Bearing shields throughout help prevent contamination from gnarly trail conditions or post-ride wash stations.
- Dual row bearings at the dropouts for a stiffer rear triangle.
- Large open ports on alloy allow for easy cable and hose installations.
- Integrated "Spirit Guide" chain guide, with 2-bolt ISCG05 for mounting a bashguard, keeping your chain on and your ring intact
- Integrated downtube protector and shuttle guard.
- All frame sizes are water bottle compatible.

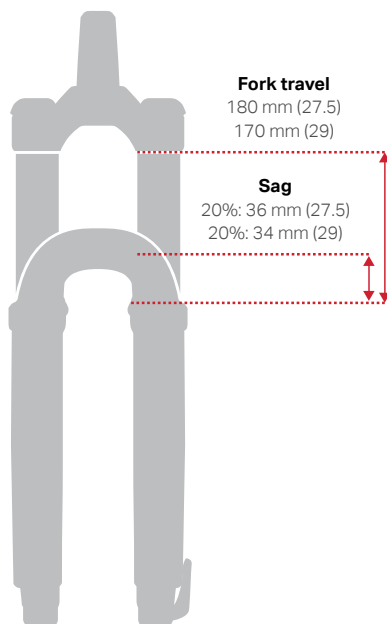
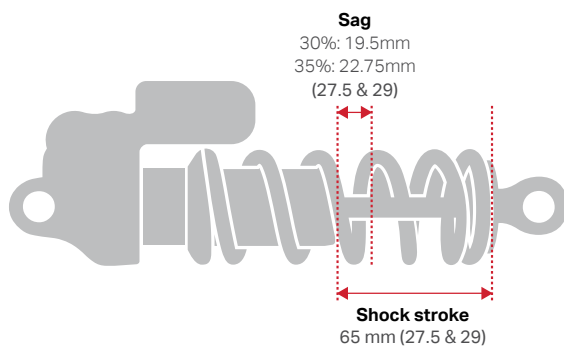
BASIC SET-UP

There are several variables that can be manipulated to fine-tune the set-up of your suspension. These are some basic guidelines to get you in the ballpark, and you should experiment to see what best suits you from there.

The first step is to set your sag. Sag refers to how much suspension moves under just the weight of the rider (including all riding accessories). Air pressure or coil spring rate and preload is adjusted until the desired amount of sag is measured.

Please observe the minimum and maximum amount of preload recommended by the manufacturer for a given coil spring.

If you need to change the spring rate, please note you must remove the eyelet bearings to remove the coil spring.



SHOCK EYELET BEARING

Service

Your frame is equipped with cartridge bearings in the rear eyelet, allowing for better small-bump compliance. These bearings are carried by cups that have a very firm press fit into the shock shaft.



If you have your shock serviced, we highly recommend removing these components, as suspension service centres cannot guarantee they will be returned.

To remove the system, follow these steps:

- Use the Enduro Bearings BRT-006 tool, or a [blind bearing puller](#) (8 mm extension) to remove both bearings.
- Remove the centre sleeve.
- Use the blind bearing puller (10 mm extension) to remove the empty cups.

NOTE: the inner diameter of the cups is 11 mm, which means the 12 mm extension won't fit (So don't force it). Use the 10 mm extension.

To install new cups, use a bearing press or vice, making sure to press on the outer edge of the cups, and don't forget the centre spacer sleeve between the cups

SHOCK SET-UP

STANDARD SET UP / 35% SAG				
SLAYER 27.5			SLAYER 29	
RIDER WEIGHT (LB. / KG)	STEEL SPRING	FOX SLS SPRING	STEEL SPRING	FOX SLS SPRING
100 / 45	250	Not available	250	
110 / 50	300	300	250	Not available
120 / 55	300	325	250	
130 / 59	350	350	300	300
140 / 64	350	375	300	325
150 / 68	400	400	350	350
160 / 73	400	400	350	375
170 / 77	450	425	400	400
180 / 82	450	450	400	400
190 / 86	500	475	450	425
200 / 91	500	500	450	450
210 / 95	550	525	500	475
220 / 100	550	550	500	500
230 / 105	600		550	525
240 / 109	650	Not available	550	550
250 / 114	700		600	Not available

Rebound

Rebound adjustment controls how quickly your suspension returns to full extension after it hits a bump. Too much rebound control, and the fork or shock will move too slowly, sinking deeper and deeper into its travel under repeated hits, which will feel harsh. Too little, and the suspension can spring back too quickly, causing a loss of traction and control. Follow the manufacturer's recommendations for base settings, and experiment to find your happy place.

Compression

Low speed compression (LSC) controls rider weight shifts, pumping through terrain, G-outs, and other slow inputs. Too much LSC will result in a harsher ride feel; too little LSC will result in a ride feel that's too soft and unresponsive.

BOTTOM OUT CONTROL / FIRM RIDE / 25% SAG				
Air springs offer more bottom out resistance by nature. To match the bottom out force of an air shock, use the coil weights below. This will also affect the beginning and middle of the stroke, offering a firmer ride feel.				
SLAYER 27.5			SLAYER 29	
RIDER WEIGHT (LB. / KG)	STEEL SPRING	FOX SLS SPRING	STEEL SPRING	FOX SLS SPRING
100 / 45	300	300	250	Not available
110 / 50	300	325	250	Not available
120 / 55	350	350	300	300
130 / 59	400	425	350	325
140 / 64	450	450	350	350
150 / 68	450	450	400	400
160 / 73	500	475	450	425
170 / 77	500	500	450	450
180 / 82	550	525	450	450
190 / 86	550	550	500	475
200 / 91	600		500	500
210 / 95	650		550	525
220 / 100	700	Not available	600	550
230 / 105	750		650	Not available
240 / 109	800		700	Not available
250 / 114	800		750	Not available

Shock Settings

Fox

We recommend the following settings, for all adjustments (high- and low speed rebound, high- and low speed compression):

- 350 lb. spring = 9–12 clicks from closed
- 400 lb. spring = 8–11 clicks from closed
- 450 lb. spring = 7–10 clicks from closed
- 500 lb. spring = 6–9 clicks from closed

RockShox

We recommend the following settings

- **For low speed rebound**
All springs = 5–7 clicks from closed
- **For low speed compression**
Start with the adjustment fully open and adjust one click at a time to suit your personal preference.

PRO TIPS & TRICKS

- When tuning your suspension, write down your settings so you can refer back to them. Better yet, use an online spreadsheet on your phone!
- Use a 4 mm plastic housing ferrule to plug any unused cable ports at the head tube.
- To avoid having to readjust your Spirit Guide if you remove your crank, remove the main pivot bolt and lift the chainstay up, allowing you to remove your crank without removing the chainring.
- The main bearing spacer sleeve (between the two bearings) has holes in it, to serve as a drift when removing bearings:
 - Use a dull punch (the flatter the better) and rest it inside the holes in the centre sleeve.
 - Tap the bearing out.

- When replacing shift or post housing, you can use a RockShox reverb tool to simply pull a new piece of housing right into place, without disturbing the inner foam tubes.

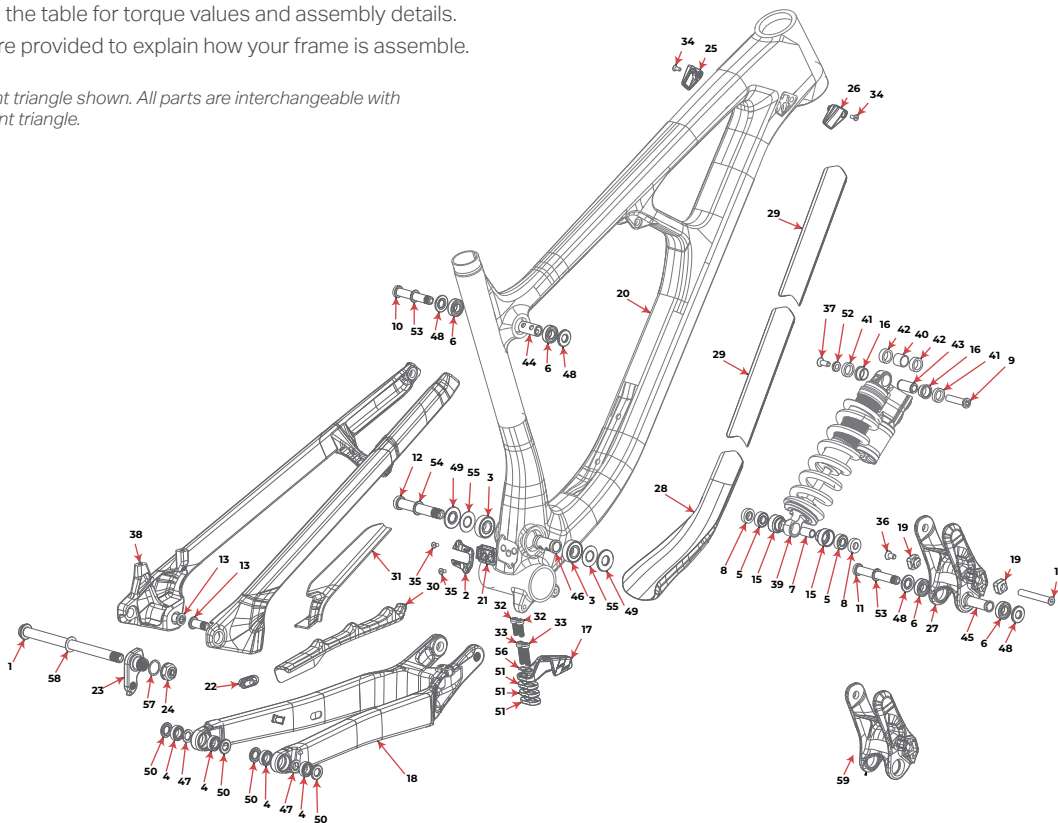


- When assembling pivot bolts, use grease to “glue” any spacers into place while you assemble.
- Insert pivots through bearings/spacers so they sit flush with the inside face of the inner race, holding washers in place while you assemble.
- Zip-tie a spare derailleur hanger to your saddle rails so you always have one with you when you’re deep in the woods.

EXPLODED VIEW

Please refer to the table for torque values and assembly details. These views are provided to explain how your frame is assemble.

Note: carbon front triangle shown. All parts are interchangeable with the aluminum front triangle.



FULL LIST OF PARTS

Please refer to the small-parts kits available for purchase.

There are several kits that can help you maintain your bike for maximum trail performance: <https://shop.bikes.com/collections/parts>.

These are available from your local dealer and on www.bikes.com.

#	QTY	ITEM	PART NO.	DESCRIPTION	TORQUE (NM)	INSTALLATION NOTES
1	1	AXLE, REAR	3227009	REAR AXLE 12 X 173 MM, HARD BLACK ANO	10	Grease on outside.
2	1	BB PORT COVER	1800001	SLAYER BB PLASTIC PORT COVER		
3	2	BEARING	1800021	ENDURO 6001 LLU MAX 28 X 12 X 8		
4	4	BEARING	1800022	ENDURO 6800 LLU MAX 19 X 10 X 5		
5	2	BEARING	1807036	ENDURO 698 LLU MAX 19 X 8 X 6		
6	4	BEARING	1807042	ENDURO 6900 2RS MAX, 22 X 10 X 6		
7	1	BEARING SLEEVE	1807028	BEARING EYELET SLEEVE FOR SR 19 X 8 X 6 CUP		
8	2	BEARING SPACER	1807099	EYELET BEARING SPACER, 5.3 MM THK, FOR 40 MM LINK WIDTH		
9	1	BOLT	1800006	SLAYER SHOCK BOLT, FORWARD, OD: 8, L: 33.5 MM HEX	8	Torque only with correct shock and hardware installed. Apply grease to shock bolts, and Loctite 243 (blue) to screw threads.
10	1	BOLT	1800011	SLAYER LINK BOLT, UPPER, M10 X 1.0, L: 59.6 MM HEX	8	Apply grease to pivot bolts, and Loctite 243 (blue) to screw threads.
11	1	BOLT	1800012	SLAYER LINK BOLT, LOWER, M10 X 1.0, L: 71.6 MM HEX	8	Apply grease to pivot bolts, and Loctite 243 (blue) to screw threads.
12	1	BOLT	1800013	SLAYER MP BOLT, M12 X 1.0, L: 73.6 MM HEX	17	Apply grease to inner bearing races, and Loctite 243 to female chain stay threads.
13	2	BOLT	1800016	SLAYER DROPOUT BOLT, M10 X 1.0, L: 24.6 MM HEX	17	Apply Loctite 243 to female seatstay threads.
14	1	BOLT	1807049	C'SUNK BOLT, 8 MM X 57 MM X M6 INT.	8	Torque only with correct shock and hardware installed. Apply grease to shock bolts, and Loctite 243 (blue) to screw threads.
15	2	BRG CUP	1807026	BEARING EYELET FOR SR 19 X 8 X 6 BRG		
16	2	BUSHING, FOX	N/A	FOX_IGUS_BUSHING		
17	1	CHAIN GUIDE	3398001	CHAIN GUIDE		
18	1	CHAINSTAY	1050650ALU	2020 SLAYER 27 CHAINSTAY, ALLOY		
19	2	FLIP CHIP	180628	FLIP CHIP, AL 7075, BLACK ANODIZE		
20	1	FT	1060650ALU - 1060653ALU	2020 SLAYER FRONT TRIANGLE, ALLOY, SIZE L		
21	1	GROMMET	1800002	SLAYER BB PORT GROMMET, 85A		
22	1	GROMMET	1809006	RUBBER GROMMET FOR 1 CABLE 5 MM YF-W13-5		
23	1	HANGER	1099031	REAR DER. HANGER, EXT. THREAD, STD MOUNT	20	Left hand thread, apply Loctite 243 (blue) to male threads.
24	1	HANGER NUT	1099033	HANGER NUT, M16 X 1.8 MM HEX	20	Left hand thread, apply Loctite 243 (blue) to male threads.
25	1	HT PORT COVER, LEFT	1800004	HT PLASTIC PORT COVER, M4, LEFT		
26	1	HT PORT COVER, RIGHT	1800003	HT PLASTIC PORT COVER, M4, RIGHT		
27	1	LINK	1090020	2020 SLAYER 27 LINK		
28	1	PROTECTOR	370001	DOWNTUBE PROTECTOR		

#	QTY	ITEM	PART NO.	DESCRIPTION	TORQUE (NM)	INSTALLATION NOTES
29	2	PROTECTOR	370002	TAILGATE PROTECTOR		
30	1	PROTECTOR	370003	CHAINSTAY PROTECTOR		
31	1	PROTECTOR	370004	SEATSTAY PROTECTOR		
32	2	SCREW	1800029	M6-1.0, 18 MM LONG, SOCKET HEAD		
33	2	SCREW	1807132	M6-1.0, 25 MM LONG, SOCKET HEAD		
34	2	SCREW, M4 X 10	1800024-BK	C'SUNK SOCKET SCREW, M4 X 10 MM, ZINC-PLATED 10.9 STEEL, BLACK	< 1	Apply grease to bolt threads and tighten until snug.
35	2	SCREW, M4 X 8	1807068-BK	FLAT HEAD C'SUNK SOCKET SCREW, M4 X 8 MM, STAINLESS STEEL, BLACK	< 1	Apply grease to bolt threads and tighten until snug.
36	1	SCREW, M6 X 12	180566-012-BK	FLAT HEAD C'SUNK SOCKET SCREW, M6-1.0 X 12 MM, STAINLESS, BLACK	8	Torque only with correct shock and hardware installed. Apply grease to shock bolts, and Loctite 243 (blue) to screw threads.
37	1	SCREW, M6 X 16	1807120-BK	FLAT HEAD C'SUNK SOCKET SCREW, M6-1.0 X 16 MM, STAINLESS, BLACK, BLUE LOCTITE	8	Torque only with correct shock and hardware installed. Apply grease to shock bolts, and Loctite 243 (blue) to screw threads.
38	1	SEATSTAY	1050651ALU	2020 SLAYER 27 SEATSTAY, ALLOY		
39	1	SHOCK	N/A	SHOCK 230 X 65 MM		
40	1	SHOCK BUSHING	N/A	SHOCK BUSHING, ID: 12.7 MM, OD: 15 MM, L: 12.7 MM, STEEL		
41	2	SHOCK REDUCER	N/A	FOX STD REDUCER FOR 25 MM PIN		
42	2	SHOCK REDUCER	N/A	SRAM STD REDUCER FOR 25 MM PIN		
43	1	SHOCK PIN	N/A	SHOCK PIN: ID: 8 X 25 MM LONG; ALUMINUM		
44	1	SLEEVE	1800008	SLAYER TT BEARING SLEEVE, ID: 10, OD: 14, L: 29		
45	1	SLEEVE	1800010	SLAYER SS BEARING SLEEVE, ID: 10, OD: 14, L: 41, NECKED		
46	1	SLEEVE	1800014	SLAYER MP BEARING SLEEVE, OD: 17, ID: 12, L: 35		
47	2	SLEEVE	1800017	SLAYER DO BEARING SLEEVE, OD: 16, ID: 10, T: 1.8		
48	4	SPACER	1800009	LINK BEARING SPACER, OD: 22, ID: 10, T: 2.5		
49	2	SPACER	1800015	MP BEARING SPACER, OD: 28, ID: 12, T: 2		
50	4	SPACER	1800018	DO BEARING SPACER, OD: 19, ID: 10, T: 2		
51	3	SPACER	3398002	CHAIN GUIDE SPACER		
52	1	WASHER	1800007	SLAYER SHOCK SCREW WASHER, M6 C'SINK		
53	2	WASHER	1800019	WASHER ID: 10.2, OD: 15.5, T: 1		
54	1	WASHER	1800020	WASHER ID: 12.2, OD: 17.5, T: 1		
55	2	WASHER	1800023	ENDURO WASHER SEAL FOR 12 X 28 BEARING		
56	1	WASHER	1807133	CHAIN GUIDE WASHER		
57	1	WASHER	1808029	WASHER, 16 X 20 X 0.5 MM, 304 SS		
58	1	WASHER	3227006	WASHER, 12 X 19 X 0.5 MM, 304 SS		
59	1	LINK	1090021	2020 SLAYER 29 LINK		

SMALL-PARTS KITS

Please refer to the small-parts kits available for purchase.

There are several kits that can help you maintain your bike for maximum trail performance: <https://shop.bikes.com/collections/parts>

These are available from your local dealer and on www.bikes.com

#	QTY	ITEM	PART NO.	DESCRIPTION
			1810015	LINK WITH BEARING KIT SLAYER 27 2020
27	1	LINK	1090020	2020 SLAYER 27 LINK
6	2	BEARING	1807042	ENDURO 6900 2RS MAX, 22 X 10 X 6
			1810016	LINK WITH BEARING KIT SLAYER 29 2020
59	1	LINK	1090021	2020 SLAYER 29 LINK
6	2	BEARING	1807042	ENDURO 6900 2RS MAX, 22 X 10 X 6
			1818013	KIT STANDARD HANGER
23	1	HANGER	1099031	REAR DER. HANGER, EXT. THREAD, STD MOUNT
24	1	HANGER NUT	1099033	HANGER NUT, M16 X 1.8 MM HEX
57	1	WASHER	1808029	WASHER, 16 X 20 X 0.5 MM, 304 SS
			1810017	PIVOT BOLT KIT SLAYER 2020
9	1	BOLT	1800006	SLAYER SHOCK BOLT, FORWARD, OD: 8, L: 33.5 MM HEX
52	1	WASHER	1800007	SLAYER SHOCK SCREW WASHER, M6 C'SINK
37	1	SCREW, M6 X 16	1807120-BK	FLAT HEAD C'SUNK SOCKET SCREW, M6-1.0 X 16 MM, STAINLESS, BLACK, BLUE LOC-TITE
11	1	BOLT	1800012	SLAYER LINK BOLT, LOWER, M10 X 1.0, L: 71.6 MM HEX
53	2	WASHER	1800019	WASHER ID: 10.2, OD: 15.5, T: 1
48	4	SPACER	1800009	LINK BEARING SPACER, OD: 22, ID: 10, T: 2.5
14	1	BOLT	1807049	C'SUNK BOLT, 8 MM X 57 MM X M6 INT.
36	1	SCREW, M6 X 12	180566-012-BK	FLAT HEAD C'SUNK SOCKET SCREW, M6-1.0 X 12 MM, STAINLESS, BLACK
12	1	BOLT	1800013	SLAYER MP BOLT, M12 X 1.0, L: 73.6 MM HEX
54	1	WASHER	1800020	WASHER ID: 12.2, OD: 17.5, T: 1
49	2	SPACER	1800015	MP BEARING SPACER, OD: 28, ID: 12, T: 2
55	2	WASHER	1800023	ENDURO WASHER SEAL FOR 12 X 28 BEARING
10	1	BOLT	1800011	SLAYER LINK BOLT, UPPER, M10 X 1.0, L: 59.6 MM HEX
13	2	BOLT	1800016	SLAYER DROPOUT BOLT, M10 X 1.0, L: 24.6 MM HEX
44	1	SLEEVE	1800008	SLAYER TT BEARING SLEEVE, ID: 10, OD: 14, L: 29
45	1	SLEEVE	1800010	SLAYER SS BEARING SLEEVE, ID: 10, OD: 14, L: 41, NECKED
46	1	SLEEVE	1800014	SLAYER MP BEARING SLEEVE, OD: 17, ID: 12, L: 35
47	2	SLEEVE	1800017	SLAYER DO BEARING SLEEVE, OD: 16, ID: 10, T: 1.8
50	4	SPACER	1800018	DO BEARING SPACER, OD: 19, ID: 10, T: 2
			1810018	SPIRIT GUIDE KIT SLAYER 2020
17	1	CHAIN GUIDE	3398001	CHAIN GUIDE
32	2	SCREW	1800029	M6-1.0, 18 MM LONG, SOCKET HEAD
33	2	SCREW	1807132	M6-1.0, 25 MM LONG, SOCKET HEAD
51	3	SPACER	3398002	CHAIN GUIDE SPACER
56	1	WASHER	1807133	CHAIN GUIDE WASHER

#	QTY	ITEM	PART NO.	DESCRIPTION
			1810019	BIKE PROTECTION KIT SLAYER 2020
29	2	PROTECTOR	370002	TAILGATE PROTECTOR
28	1	PROTECTOR	370001	DOWNTUBE PROTECTOR
30	1	PROTECTOR	370003	CHAINSTAY PROTECTOR
31	1	PROTECTOR	370004	SEATSTAY PROTECTOR
			1810020	CHAINSTAY PROTECTOR 2020
30	1	PROTECTOR	370003	CHAINSTAY PROTECTOR
			1817011	AXLE KIT BOOST
1	1	AXLE, REAR	3227009	REAR AXLE 12 X 173 MM, HARD BLACK ANO
58	1	WASHER	3227006	WASHER, 12 X 19 X 0.5 MM, 304 SS
			1818003	SHOCK BEARING EYELET KIT
5	2	BEARING	1807036	ENDURO 698 LLU MAX 19 X 8 X 6
7	1	BEARING SLEEVE	1807028	BEARING EYELET SLEEVE FOR SR 19 X 8 X 6 CUP
8	2	BEARING SPACER	1807099	EYELET BEARING SPACER, 5.3 MM THK, FOR 40 MM LINK WIDTH
15	2	BRG CUP	1807026	BEARING EYELET FOR SR 19 X 8 X 6 BRG
			1810021	PIVOT BEARING KIT SLAYER 2020
3	2	BEARING	1800021	ENDURO 6001 LLU MAX 28 X 12 X 8
4	4	BEARING	1800022	ENDURO 6800 LLU MAX 19 X 10 X 5
6	4	BEARING	1807042	ENDURO 6900 2RS MAX 22 X 10 X 6
			1810022	HEAD TUBE PANEL KIT 2020
25	1	HT PORT COVER, LEFT	1800004	HT PLASTIC PORT COVER, M4, LEFT
26	1	HT PORT COVER, RIGHT	1800003	HT PLASTIC PORT COVER, M4, RIGHT
34	2	SCREW, M4 X 10	1800024-BK	C'SUNK SOCKET SCREW, M4 X 10 MM, ZINC-PLATED 10.9 STEEL, BLACK
			1810023	BB CABLE PORT KIT 2020
2	1	BB PORT COVER	1800001	SLAYER BB PLASTIC PORT COVER
21	1	GROMMET	1800002	SLAYER BB PORT GROMMET, 85A
35	2	SCREW, M4 X 8	1807068-BK	FLAT HEAD C'SUNK SOCKET SCREW, M4 X 8 MM, STAINLESS STEEL, BLACK
22	1	GROMMET	1809006	RUBBER GROMMET FOR 1 CABLE 5 MM YF-W13-5
			1810024	RIDE 4 FLIP CHIP KIT 2020
19	2	FLIP CHIP	180628	FLIP CHIP, AL 7075, BLACK ANODIZE

WARRANTY INFORMATION

Your bicycle is warrantied against defects in materials and manufacturing as per the following table:

CATEGORY	TERM	NOTES
Frame members	5 years	Front triangle + rear triangle, links
Hardware	1 year	Pivots, axles, etc.
Electronics	3 years	Drive, iWoc, sensors, charger
Drive wear items	1 year	Pulleys, pinions, transfer chain
Battery	2 years	If stored for 3+ months, charge battery every 3 months. Failure to do so may cause damage.
Components	As per original manufacturer warranty	

All warranty and after-sale service must be handled by the authorized dealer who sold the complete bicycle or frame. We cover your Rocky Mountain frame for defects in material and workmanship from the original date of purchase of your new Rocky Mountain bicycle according to the frame material and the type of use.

Frame material / type of use

- Carbon fibre: 5 years – Limited*
- Aluminum – front and fully suspended: 5 years – Limited*
- Downhill and freeride: 3 years – Limited*

* Please refer to the limitations stated below.

NOTE – Warranty is not valid for:

- Any bicycles previously used for commercial activity, such as rental, courier, police or security bicycles
- The installation of components, parts or accessories that are not originally intended for or compatible with the bicycle (or frame) as sold
- The purchase of a Rocky Mountain bicycle from an unauthorized dealer

- The purchase of a Rocky Mountain bicycle or frame from third-party internet sites (such as eBay), no matter what the listing says
- This limited warranty covers bicycles previously used for commercial activity such as rental (bike park), courier, police, security, etc. against defects in material and workmanship. Hardware, bearings, pivots and bushings are excluded from our warranty policy.

Warranty coverage against other defects in workmanship and materials

- Coating – paint and decals: 1 year
- Full suspension frame hardware, bearings, pivots and bushings*: 1 year.
*Links are part of the frame.
- Downhill and freeride frame hardware, suspension: 6 months

What is not covered?

- Normal wear and tear
- Damage or failure caused by accident, misuse, abuse or neglect
- Extreme or improper use of your Rocky Mountain bicycle outside of its intended purpose
- Improper assembly and/or lack of proper maintenance
- Paint fading caused by the effects of ultraviolet light (UV) or outdoor exposure is not covered by this limited warranty.
- Scratches and/or chips in the paint caused by dirt, rocks, road debris, roof rack transport, etc. are not covered by this limited warranty.
- Components, parts or accessories not compatible with the bicycle (or frame)
- Damage on pressfit bottom bracket caused by improper service or materials/parts is not covered by the Rocky Mountain Limited Warranty.

Details of what is not covered under warranty

- Normal wear and tear on tires, tubes, brakes, gear cables, brake pads, etc. is not covered. Your authorized Rocky Mountain dealer will tell you what these normal maintenance items are.
- Consequential damage or any damage caused by accident, misuse or abuse.
- Improper assembly and/or lack of proper maintenance, sandblasting, sanding, grinding, wire brushing, filing, welding, brazing, drilled holes, anodizing, repainting and chrome plating are not covered under your warranty and may void the warranty of the component manufacturers.

- If you ride in extreme terrain, as depicted in mountain biking videos (e.g., by taking "trial"-style riding courses, riding ramps, performing stunts, riding on BMX tracks, riding in the city down stairs and embankments or riding in other similar terrain), you put yourself at great personal risk and forfeit the warranty as outlined in the Warranty Table. It is important to note that bent components, frames, forks, handlebars, seat posts, pedals, cranks and wheel rims are signs of accidents and/or abuse.
- Labour for part replacement or changeover is not included.
- Rocky Mountain Bicycles reserves the right to repair or replace at its discretion any part that is deemed to be covered by a valid warranty.
- Please note that Rocky Mountain Bicycles cannot guarantee a colour match to the original part.
- This warranty extends from the date of purchase, applies only to the original owner, and is not transferable.

EXCLUSION AND LIMITATION OF DAMAGES

THE WARRANTY OF ROCKY MOUNTAIN BICYCLES IS LIMITED TO THE REPAIR OR REPLACEMENT OF THE PRODUCTS AND DOES NOT GRANT ANY WARRANTY, EITHER EXPRESSED OR IMPLIED, LEGAL OR CONVENTIONAL, AND DISCLAIMS ANY AND ALL IMPLIED WARRANTIES OF MERCHANTABILITY AND FITNESS FOR PARTICULAR PURPOSES, AND ROCKY MOUNTAIN SHALL UNDER NO CIRCUMSTANCES BE LIABLE FOR DIRECT OR INDIRECT, SPECIAL, INCIDENTAL OR CONSEQUENTIAL DAMAGES, EVEN WHERE ROCKY MOUNTAIN HAS BEEN ADVISED OF SUCH DAMAGES, AND ROCKY MOUNTAIN'S LIABILITY SHALL BE LIMITED TO \$50.00.



LOVE THE RIDE

Development Centre

1225 East Keith Road, Unit #10
North Vancouver, BC V7J 1J3 Canada
T. 604-980-9938 F. 604-980-9975

Head Office

9095 25th Avenue
Saint-Georges, QC G6A 1A1 Canada
T. 1-800-663-2512 F. 1-800-570-8356

*Rocky Mountain, its logo and other trade names are used by Rocky Mountain.
Some technologies on Rocky Mountain products are patented or patent pending*

© 2019 Rocky Mountain®