

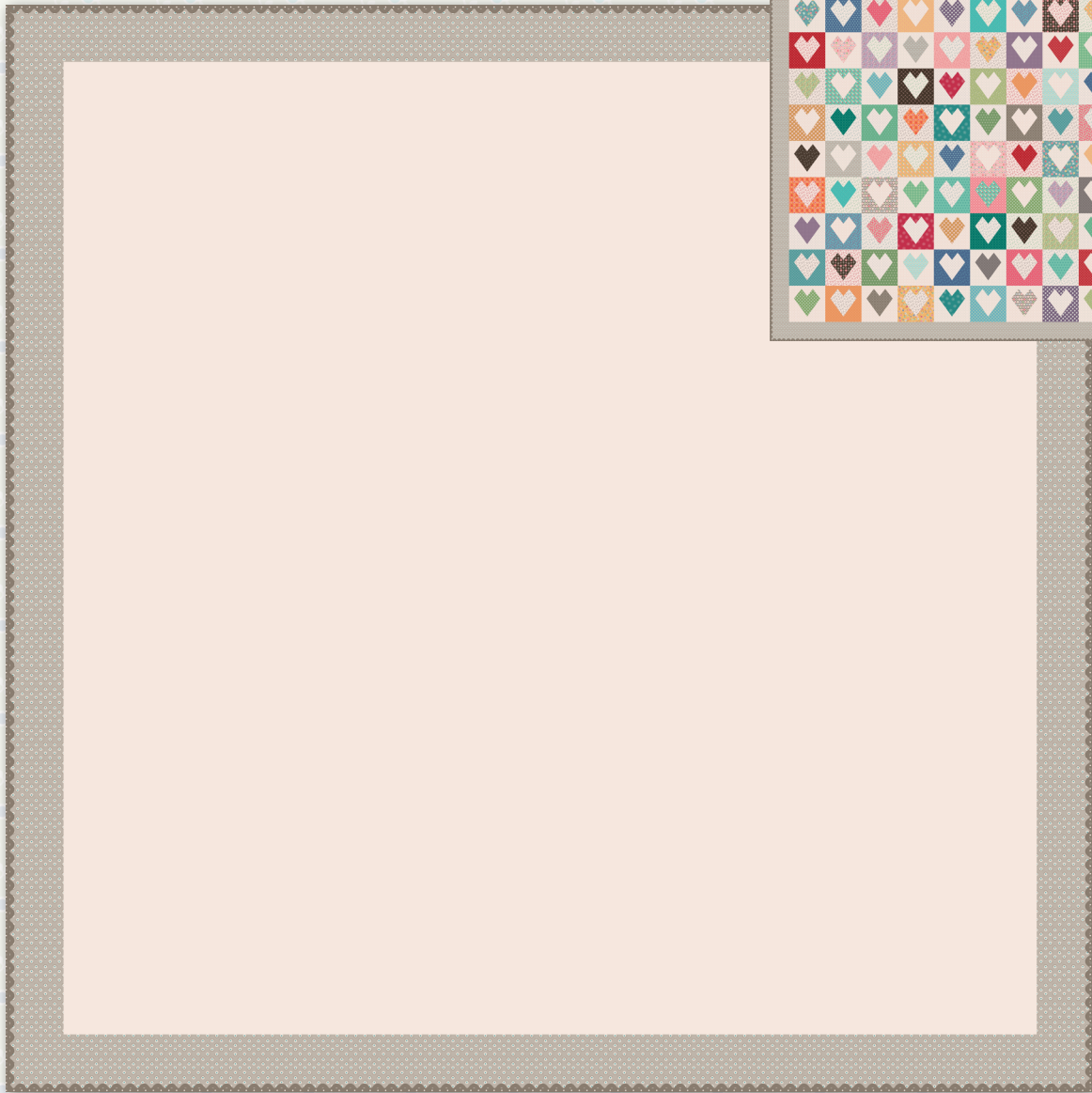
# Paper Hearts Bee Dot Quilt

by Lori Holt of Bee in My Bonnet



**Riley Blake**  
DESIGNS™

## Setting Instructions



70" x 70"



by Lori Holt of Bee in my Bonnet



= Beginner

# PAPER HEARTS BEE DOT QUILT

## FINISHED QUILT SIZE 70" x 70"

Measurements include ¼" seam allowance.

Sew with right sides together unless otherwise stated.

## GENERAL INSTRUCTIONS

Please check our website [www.rileyblakedesigns.com/pattern-updates](http://www.rileyblakedesigns.com/pattern-updates) for any revisions before starting this project. This pattern requires a basic knowledge of quilting techniques and terminology. The quilt and block diagrams portrayed are virtual images. The layout and look of your project may differ when using actual fabric. Yardage calculated using a 42" usable width of fabric.

WOF = Width of Fabric

LOF = Length of Fabric

RST = Right Sides Together

## FABRIC REQUIREMENTS

All fabrics are from the Bee Dots collection unless otherwise indicated.

(1) Bee Dots 10-inch Stacker 10-14160-42

2 yards Pewter Fawn C14170-PEWTER

⅝ yard Alpine Lucille C14181-ALPINE

⅝ yard Berry Lucille C14181-BERRY

⅝ yard Milk Can Lucille C14181-MILKCAN

⅝ yard Raindrop Lucille C14181-RAINDROP

⅝ yard Denim Thelma C14182-DENIM

⅝ yard Lettuce Thelma C14182-LETTUCE

⅝ yard Marigold Thelma C14182-MARIGOLD

⅝ yard Pumpkin Thelma C14182-PUMPKIN

⅝ yard Pebble Lois C14174-PEBBLE (binding)

2 ¼ yards WIDE BACK backing fabric of your choice

## OTHER SUPPLIES

Basic Sewing Supplies

(2) packages 10" Heart Quilt Paper ST-33027

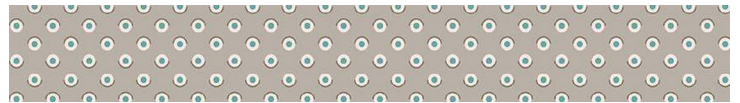
8 yards Pebble Large Vintage Trim STVT-24573

Lori Holt Cute Cuts™ Trim It™ 7 ½" Square Ruler STTI-21863 (recommended)

Batting (78" x 78")

## CUTTING INSTRUCTIONS

Please read all pattern instructions before cutting fabrics. Refer to the quilt photo for the placement of each of the fabrics. Use a straight edge ruler and rotary cutter to cut your fabrics.



### Pewter Fawn

Cut (4) 4" x LOF strips; subcut:

(2) 4" x 63 ½" side border strips.

(2) 4" x 70 ½" top/bottom border strips.



### Alpine Lucille

Cut (1) 10" x WOF strip; subcut:

(4) 10" squares and add them to your stacker.



### Berry Lucille

Cut (1) 10" x WOF strip; subcut:

(3) 10" squares and add them to your stacker.



### Milk Can Lucille

Cut (2) 10" x WOF strips; subcut:

(5) 10" squares and add them to your stacker.

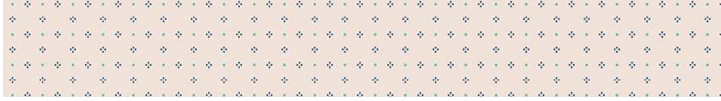


### Raindrop Lucille

Cut (2) 10" x WOF strips; subcut:

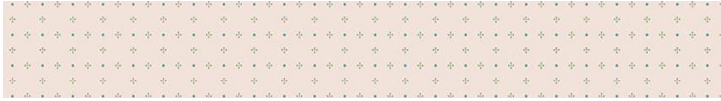
(5) 10" squares and add them to your stacker.

# PAPER HEARTS BEE DOT QUILT



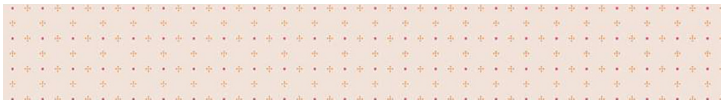
## Denim Thelma

Cut (2) 10" x WOF strips; subcut:  
(6) 10" squares and add them to your stacker.



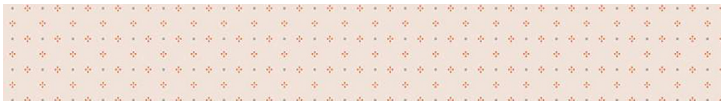
## Lettuce Thelma

Cut (2) 10" x WOF strips; subcut:  
(6) 10" squares and add them to your stacker.



## Marigold Thelma

Cut (1) 10" x WOF strip; subcut:  
(4) 10" squares and add them to your stacker.



## Pumpkin Thelma

Cut (2) 10" x WOF strips; subcut:  
(7) 10" squares and add them to your stacker.



## Pebble Lois

Cut (8) 2 ½" x WOF strips for binding.

## BLOCK ASSEMBLY

### SEWING INSTRUCTIONS

Follow the instructions included in the Heart Quilt Paper packages to make (81) blocks. Refer to the quilt photo for the fabric combinations and placement of the prints

Your blocks should measure 7 ½" x 7 ½" unfinished.

## QUILT ASSEMBLY

### LAYOUT INSTRUCTIONS

1. Arrange the blocks in (9) rows of (9) blocks. Alternate blocks with light hearts and the blocks with dark hearts across the quilt top.
2. Sew the blocks together to form rows. Press the seams toward the blocks with lighter hearts.
3. Nest the seams and sew the rows together. Press the seams open or toward the bottom edge.
4. Attach the side borders to the left and right edges of the quilt top. Press toward the borders.
5. Attach the top and bottom borders to the top and bottom edges of the quilt top. Press toward the borders.

Your quilt top should measure 70 ½" x 70 ½" unfinished.


## FINISHING INSTRUCTIONS

### FINISHING INSTRUCTIONS


Finish quilt by layering the quilt top, batting, and backing. Baste quilt layers together and quilt as desired. Finish with Pebble Large Vintage Trim™ and bind with the Pebble Lois binding strips.

Enjoy and share your quilt using the hashtags #beedotsfabric, #paperheartsqilt, #rileyblakedesigns, and #iloverileyblake.

Stay up-to-date on all Lori Holt happenings and projects:

 Visit Lori's Blog at [BeInMyBonnetCo.blogspot.com](http://BeInMyBonnetCo.blogspot.com)

 Subscribe to the Lori Holt YouTube channel

 Follow her on Instagram at @beelori1

Share your quilt using hashtags #beedotsfabric, #paperheartsqilt, #rileyblakedesigns, and #iloverileyblake

# PAPER HEARTS BEE DOT QUILT

## QUILT LAYOUT DIAGRAM

