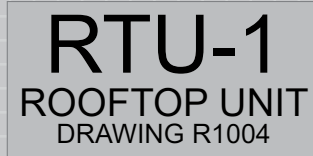


Durable Aluminum Nameplates are available in the most commonly requested sizes or fully customizable to meet specific project requirements. A natural aluminum or colored baked enamel finish allow for easier identification of equipment or panels. These nameplates are manufactured to meet greater temperature extremes. Laser etching provides great flexibility in font size, style and number of characters.

Aluminum Nameplate Examples



Nameplate size: 1 x 4 in
0.5 in text size (sized to fit also available)



Nameplate Size: 2 x 4 in
Row one - 3/4 in text size
Row two - 3/8 in text size
Row three - 1/4 in text size



Nameplate Size: 2 x 3 in
Row one - 3/8 in text size
Row two - 3/4 in text size
Row three and four - 3/16 in text size



Nameplate Size: 2.5 x 4 in
1/2 in text size (sized to fit also available)

These images are for approximate representation only.

Product Specifications

Nameplate Sizes	
3/4 x 2-1/2 in (19 x 64 mm)	3 x 5 in (76 x 127 mm)
1 x 2 in (25 x 51 mm)	3 x 6 in (76 x 152 mm)
1 x 3 in (25 x 76 mm)	4 x 6 in (102 x 152 mm)
1 x 4 in (35 x 102 mm)	4 x 8 in (102 x 203.2 mm)
1-1/2 x 4 in (38 x 102 mm)	4 x 12 in (102 x 304.8 mm)
2 x 3 in (51 x 76 mm)	6 x 12 in (152 x 304.8 mm)
2 x 4 in (51 x 102 mm)	8 x 12 in (203.2 x 304.8 mm)
2-1/2 x 4 in (64 x 102 mm)	12 x 12 in (304.8 x 304.8 mm)
2 x 6 in (51 x 152 mm)	12 x 18 in (304.8 x 457.2 mm)
3 x 4 in (76 x 102 mm)	Custom Size Required

Text Sizes	Number of Lines			
	1	2	3	4
Sized to fit nameplate				
3/16 in (4.7625 mm)				
1/4 in (6.35 mm)				
3/8 in (9.525 mm)				
1/2 in (12.7 mm)				
3/4 in (19.05 mm)				
1 in (25.4 mm)				
Other				

Mounting Options	
<input type="checkbox"/>	Corner Holes
<input type="checkbox"/>	Holes Centered Left & Right
<input type="checkbox"/>	Top Corner Holes
<input type="checkbox"/>	Holes Centered Top & Bottom
<input type="checkbox"/>	Adhesive Backing <small>May combine with any option above</small>

Codes	
Barcode	
QR Code	

Colors	
	WHITE/BLACK
	BLACK/WHITE
	NATURAL/RED
	NATURAL/BLUE
	BLACK/ALUMIN
	NATURAL/BLACK

Physical Properties

Installation Instructions	For adhesive backing applied to a clean dry surface above 50°F (10°C)
Service Temp	-200°F to 1400°F (-128°C to 760°C)
Water Resistance	Excellent
Finish	Gloss
Material Properties	24 Gauge (0.020"/0.508 mm thick) Aluminum
Text:	Laser Etched, Letter Finish depending on Substrate color
Installation Options	Adhesive backing, Holes and Adhesive Backing, Magnetic backing
Hole Options	One hole each side centered, holes in corners, holes in top corners
Adhesive Properties	4-mil Acrylic Adhesive
Storage Stability	Indefinite when stored at 70°F (21°C) and 50% RH
Outdoor Durability	Excellent
Chemical Resistance	Excellent
Equivalent To	Seton Engraved Aluminum Equipment Nameplates, Marking Services Aluminum Valve and Equipment Tags, Brady Aluminum Nameplates

Project

DATE _____ / _____ / _____ JOB _____
MM DD YYYY

CONTRACTOR NAME _____