

To Use:

STEP 1: Remove backing paper from key holder and place on flat surface to store magnetic key out of child's reach.

STEP 2: Push locking hook to "Lock" position to use.
Push locking hook down to disengage when not in use.

STEP 3: Use guide sticker to help locate locking plate.

STEP 4: Use magnetic key to unlock.

! WARNING

FAILURE TO FOLLOW THESE WARNINGS AND THE INSTRUCTIONS COULD RESULT IN DEATH OR SERIOUS INJURY. READ THESE WARNINGS AND THE INSTRUCTIONS CAREFULLY BEFORE INSTALLING AND USING THIS DEVICE. KEEP THESE INSTRUCTIONS FOR FUTURE REFERENCE. THIS PRODUCT IS ONLY TO BE USED WITH WOOD CABINET DOORS AND DRAWERS. • ADULT INSTALLATION REQUIRED. KEEP SMALL PARTS AWAY FROM CHILDREN DURING INSTALLATION. • PROPERLY STORE ANY EXTRA OR UNUSED COMPONENTS OUT OF REACH OF CHILDREN.

• THIS DEVICE IS INTENDED TO RESTRICT ACCESS BY YOUNG CHILDREN TO THE CONTENTS OF A CABINET OR DRAWER, BUT SOME CHILDREN MAY STILL BE ABLE TO DEFEAT IT. • REPLACE THE DEVICE IF IT BECOMES DAMAGED OR BROKEN OR FAILS TO FUNCTION PROPERLY.

CARE & MAINTAINENCE: Make sure device is securely attached and kept clean using a damp cloth. When device is no longer in use, remove by peeling it away from item and keep out of reach from children.

Regalo International, LLC
3200 Corporate Center Drive
Suite 100, Burnsville, MN 55306, USA
BN: 83826 7177 Business Number
Canada Revenue Agency
66 Stapon Rd | Winnipeg MB R3C 3M2
©2023 Regalo International, LLC.
All Rights Reserved. | Patents Pending



🌐 www.regalo-baby.com
☎ 866.272.5274 (US Only) or 952.435.1080
📱 www.facebook.com

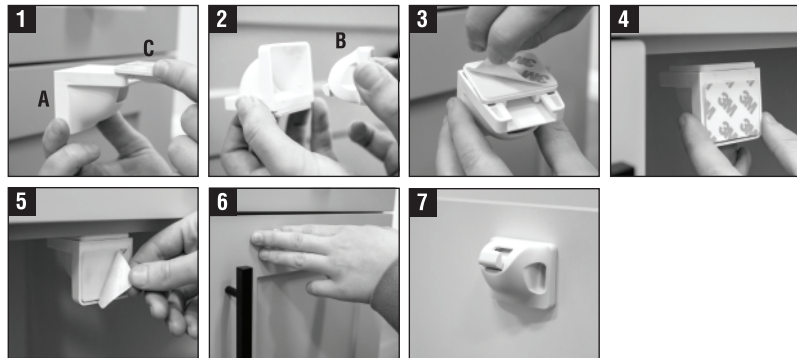
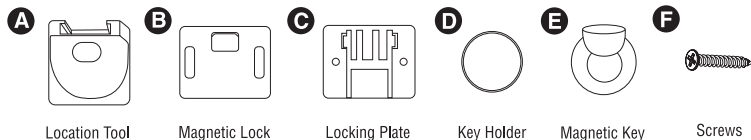
Made in China / Fabriqué en Chine / Hecha en China



Home Safety Magnetic Cabinet and Drawer Lock

Model: 6133 W

Parts



Cabinet Installation:

IMPORTANT: Wipe and dry surface before installation.

STEP 1: Insert locking plate into location tool.

STEP 2: Insert magnetic lock into location tool.

STEP 3: Remove backing paper from locking plate.

STEP 4: Position locking plate level to frame edge and press firmly. When placing, make sure there are no objects on backside of door where magnetic key is to be used (Ex. Handle or hook).

STEP 5: Remove backing paper from magnetic lock.

STEP 6: Close cupboard door fully to attach lock.

STEP 7: With latch unlocked (refer to "In Use" instructions), test with magnetic key to ensure lock is functioning properly. If not, contact customer service.

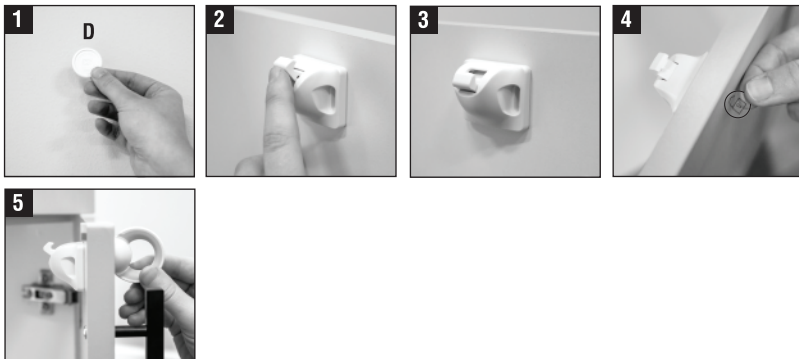


Cabinet Installation (cont.):

STEP 8: Remove location tool and store away for future use.

STEP 9: Use screws provided to fully secure magnetic latch in place.

STEP 10: Use screws provided to fully secure locking plate in place.



To Use:

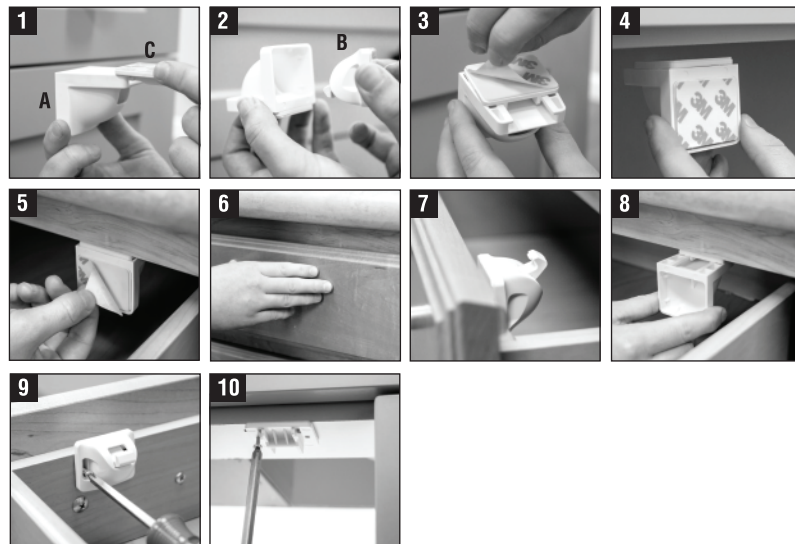
STEP 1: Remove backing paper from key holder and place on flat surface to store magnetic key out of child's reach.

STEP 2: Push locking hook to "Lock" position to use.

STEP 3: Push locking hook down to disengage when not in use.

STEP 4: Use guide sticker to help locate locking plate.

STEP 5: Use magnetic key to unlock.



Drawer Installation:

IMPORTANT: Wipe and dry surface before installation.

STEP 1: Insert locking plate into location tool.

STEP 2: Insert magnetic lock into location tool.

STEP 3: Remove backing paper from locking plate.

STEP 4: Position locking plate level to frame edge and press firmly. When placing, make sure there are no objects on backside of door where magnetic key is to be used (Ex. Handle or hook).

STEP 5: Remove backing paper from magnetic lock.

STEP 6: Close drawer fully to attach lock.

STEP 7: With latch unlocked (refer to "In Use" instructions), test with magnetic key to ensure lock is functioning properly. If not, contact customer service.

STEP 8: Remove location tool and store away for future use.

STEP 9: Use screws provided to fully secure magnetic latch in place.

STEP 10: Use screws provided to fully secure locking plate in place.