

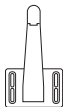


Home Safety Cabinet Lock

Model: 6130 W

Parts

A



Latch

B



Catch

C

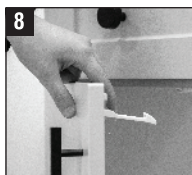
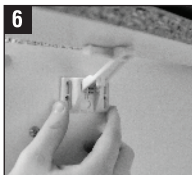
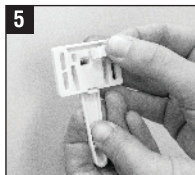
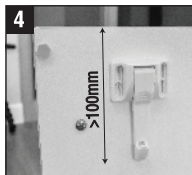
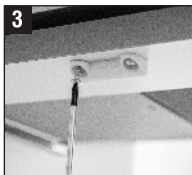
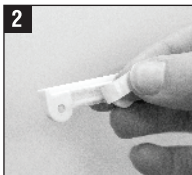
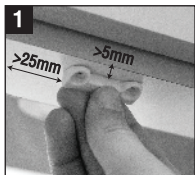


Screws

D



Adhesive Sticker



Installation:

IMPORTANT: Wipe and dry surface before installation.

STEP 1: Position catch at least 5mm from front of drawer or 25mm from side of drawer.

NOTE: Curved edge must be facing outwards.

STEP 2: Place sticker on back side of catch.

STEP 3: Mark screw holes for exact location. Use provided screws to drill/screw into place. Pre drill holes is recommended.

STEP 4: Make sure height of drawer/cupboard is greater than 3.94" (100mm).

STEP 5: Place sticker on back side of latch.

STEP 6: Center latch to middle of catch and mark screw hole locations.

STEP 7: Mount to drawer with screws.

STEP 8: To disengage, push down on latch to lock in place.

WARNING

FAILURE TO FOLLOW THESE WARNINGS AND THE INSTRUCTIONS COULD RESULT IN DEATH OR SERIOUS INJURY. READ THESE WARNINGS AND THE INSTRUCTIONS CAREFULLY BEFORE INSTALLING AND USING THIS DEVICE. KEEP THESE INSTRUCTIONS FOR FUTURE REFERENCE. THIS PRODUCT IS ONLY TO BE USED WITH WOOD CABINET DOORS AND DRAWERS.

- ADULT INSTALLATION REQUIRED. KEEP SMALL PARTS AWAY FROM CHILDREN DURING INSTALLATION.
- PROPERLY STORE ANY EXTRA OR UNUSED COMPONENTS OUT OF REACH OF CHILDREN.
- THIS DEVICE IS INTENDED TO RESTRICT ACCESS BY YOUNG CHILDREN TO THE CONTENTS OF A CABINET OR DRAWER, BUT SOME CHILDREN MAY STILL BE ABLE TO DEFEAT IT.
- REPLACE THE DEVICE IF IT BECOMES DAMAGED OR BROKEN OR FAILS TO FUNCTION PROPERLY.

CAUTION: ADULT SUPERVISION IS REQUIRED. THIS PRODUCT IS USED AS A DETERRENT. DISCONTINUE USE WHEN CHILD IS ABLE TO OPEN IT. ALWAYS KEEP HAZARDOUS ITEMS IN AREA INACCESSIBLE TO CHILDREN.

CARE & MAINTAINENCE: Make sure device is securely attached and kept clean using a damp cloth. When device is no longer in use, remove by peeling it away from item and keep out of reach from children.

Regalo International, LLC

3200 Corporate Center Drive
Suite 100, Burnsville, MN 55306, USA
BN: 83826 7177 Business Number
Canada Revenue Agency
66 Stapon Rd | Winnipeg MB R3C 3M2
©2023 Regalo International, LLC.
All Rights Reserved. | Patents Pending



 www.regalo-baby.com
 866.272.5274 (US Only) or 952.435.1080
 www.facebook.com

Made in China / Fabriqué en Chine / Hecha en China