

regalo[®]

1pk

Lever Door
Lock
6111 W



Feature

- Our Lever Door Lock helps keep doors secure and locked.
- Easy to install.

Installation

Step 1: Wipe and dry surface clean before installation.

Step 2: Peel backing paper.

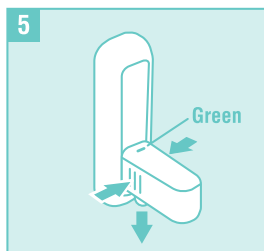
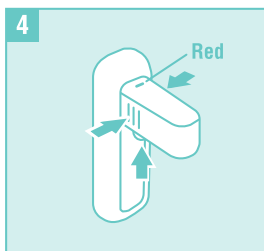
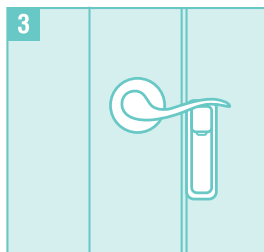
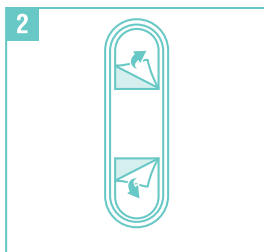
Step 3: Position lock underneath door handle as close to the outer edge of handle.

Step 4: To lock, press bottom button then press sides and pull upwards on lock.

Make sure red indicator is in "locked" position

Step 5: To unlock, press sides and pull down on lock.

Make sure green indicator is on "unlocked" position



WARNING: Adult supervision is required. This product is used as a deterrent. Discontinue use when child is able to open it.