



Home Safety Outlet Cover

Model: 6101 W

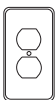
Parts

A



Cover

B



Standard Plate

C

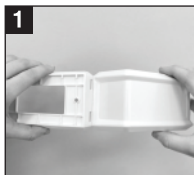


Single Plate

D



Screws



Standard Wall Plate Cover Installation:

STEP 1: Turn off power. Separate base and cover plate.

STEP 2: Remove electrical outlet cover plate from wall. Mount standard wall plate cover with screw.

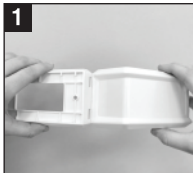
STEP 3: Snap outlet cover onto base plate.



To Use:

STEP 1: To open cover, push onto locking tabs of cover and lift.

STEP 2: Tuck electrical plug into side of cover.



Single Wall Plate Cover Installation:

STEP 1: Turn off power. Separate base and cover plate.

STEP 2: Remove electrical outlet cover plate from wall. Mount single wall plate cover with screws.

STEP 3: Snap outlet cover onto base plate.



To Use:

STEP 1: To open cover, push onto locking tabs of cover and lift.

STEP 2: Tuck electrical plug into side of cover.



WARNING

ELECTRICAL HAZARD! TURN POWER OFF! ADULT SUPERVISION IS REQUIRED. THIS PRODUCT IS USED AS A DETERRENT. DISCONTINUE USE WHEN CHILD IS ABLE TO OPEN IT.

Regalo International, LLC

3200 Corporate Center Drive
Suite 100, Burnsville, MN 55306, USA
BN: 83826 7177 Business Number
Canada Revenue Agency
66 Stapon Rd | Winnipeg MB R3C 3M2
©2023 Regalo International, LLC.
All Rights Reserved. | Patents Pending



www.regalo-baby.com
866.272.5274 (US Only) or 952.435.1080
www.facebook.com

Made in China / Fabriqué en Chine / Hecha en China