

GENEVERSE

SOLARPOWER ONE

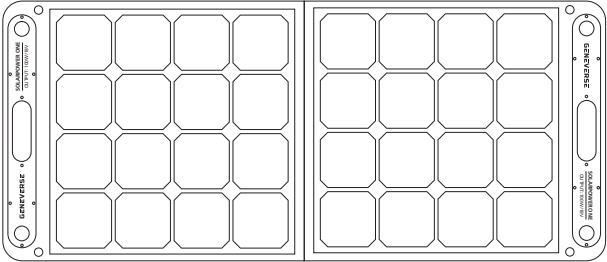
Portable Solar Panel

100W / 18V

USER GUIDE

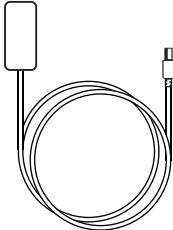
In the Box

1



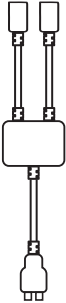
1x Solar Panel

2



1x 10-Foot Cable
(attached on the back of the panel)

3



1x 2-to-1
Converter

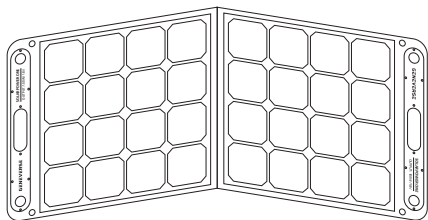
4



1x User Guide

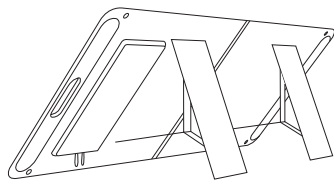
30-Second Hassle-Free Set-Up

1



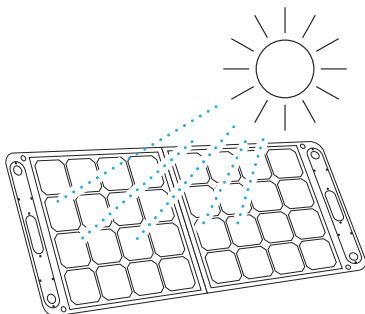
Unfold the Panel

2



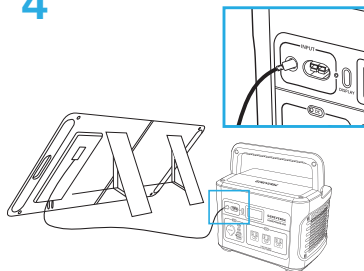
Open the Kickstands

3



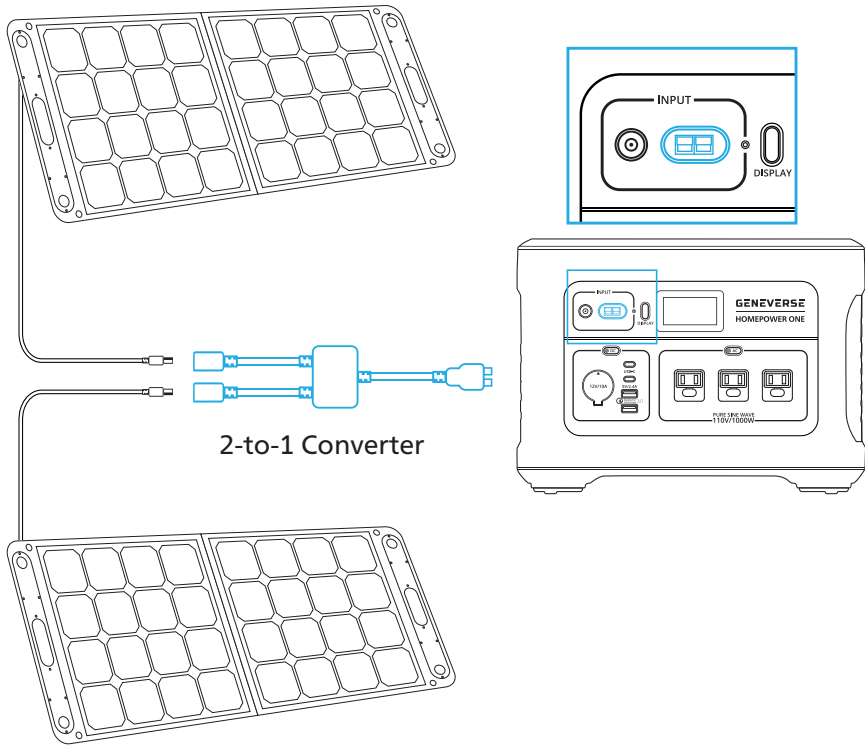
Face the Sun

4



Connect the Charging Cable

Setting Up 2 Panels



Specifications

Solar Cells:

- Type: Monocrystalline
- Number of Solar Cells: 32
- Transformation Efficiency (EFF): $\geq 23.4\%$

Power:

- Max Power (Pmax): 100W
- Open Circuit Voltage (Voc): 21.6V
- Short Circuit Current (Isc): 6.1A
- Max Power Voltage (Vmp): 18V
- Max Power Current (Imp): 5.55A

Outputs:

- 1x 8mm charging port (to charge the Geneverse HOMEPower ONE unit)
- USB-A Output: 5V \approx 2.4A
- USB-C Output: 5V \approx 3A

Dimensions & Weight:

- Dimension (folded): L 24" x W 21" x H 1.38" (61 x 53.5 x 3.5 cm)
- Dimension (unfolded): L 48" x W 21" x H 0.2" (122 x 53.5 x 0.5 cm)
- Weight: 9.1 lbs (4.13 kg)

Temperature:

- Operating Temperature (Discharging): 14°F ~ 149°F (-10°C ~ 65°C)

Waterproof Rating:

- IPX5: water resistant. It can resist a sustained, low-pressure water jet spray.

Troubleshooting & FAQ

How do I get the greatest power output from the solar panel?

The power output of the solar panel varies depending on the weather conditions and the position and angle of the solar panel facing the sun. We recommend placing the solar panel in an open area with direct sunlight and face it to the sun at the direct 90° angle.

Why didn't it get 100W of power output from the solar panel?

The power output of the solar panel varies depending on the weather conditions and the position and angle of the solar panel facing the sun. 100W is the maximum power output arising from the solar panels facing the sun at a direct 90° angle in ideal weather conditions. In actual use, the output power may commonly be lower than 100W.

Can the solar panel charge or power up my devices and appliances directly?

You can use the USB-A and USB-C port on the back of the solar panel to charge your mobile devices. For non-USB devices, you should use the solar panel to charge the Geneverse HOMEPOWER ONE backup battery power station, and then charge or power up your other devices and appliances from the HOMEPOWER ONE power station (sold separately).

How do I clean the solar panel?

Dust and dirt on the surface should first be removed using a soft brush. Do not clean the solar panel with any corrosive cleaner, like bleach. Use a damp cloth to wipe the surface of the solar panel to remove any remaining residue. Any adhesive should be removed from the solar panel surface as soon as possible to avoid any potential damage to the panel.

Is the solar panel waterproof?

No, the solar panel is not waterproof. It is water resistant with IPX5 rating. It can resist a sustained, low-pressure water jet spray.

Safety Information



Do not bend the panel. The panel will be broken if it's bended more than 30°.



Do not clean the solar panel with any corrosive cleaner. Use a damp cloth to clean it gently.



Do not use or store the panel near any source of heat, such as a fireplace or a heater.



Do not put the panel into fire or apply direct heat to it.



Do not pierce the panel casing with a nail or other sharp object, break it open with a hammer, or step on it.



Do not attempt to disassemble the panel in any way.



Do not put the panel in contact with any corrosive materials.

Support

If you experience any problems with your Geneverse product(s), please contact our support team at geneverse.com/support or email us at support@geneverse.com or call us at 1 (800) 210-8665

Website: www.geneverse.com