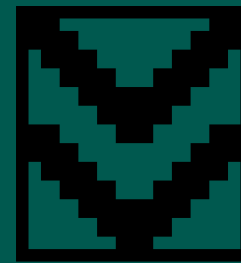


VOKE



Evoked a Culture of Rug Appreciation.

Distinctive Handcrafted Rugs.

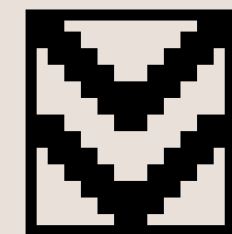
We are in the rug appreciation business, sourcing and supplying rugs created from only the finest yarns and fibres in order to guarantee quality direct from the source.

It's the behind-the-scenes work that goes into a rug that always amazes us. The skill, care and craft. The careful consideration paid to the fibre being used and how the weaver must employ a specific construction technique to achieve the desired result. This makes each rug unique; with no two rugs ever the same.

Our desire is to evoke a culture of rug appreciation. An appreciation that comes from years spent sourcing and an eye for beauty that's been developed along the way.

Explore our curated range of expertly crafted rugs. Made with carefully selected materials that adds character and texture to a range of spaces, these rugs were designed with refined living in mind.

True originals are where it's at, and we have that special forever-piece waiting for you to define your unique space with.



Elements: The Outdoor Collection

Our most beautiful landscapes were slowly carved by the steady hands of the elements, giving them a distinct character and texture. The rugs in our Outdoors Collection are made to endure the same elements that sculpted the earth. Easy to clean, hard-wearing, and expertly crafted, these outdoor rugs are an excellent addition to enhance your outdoor spaces.



Lingala Dark

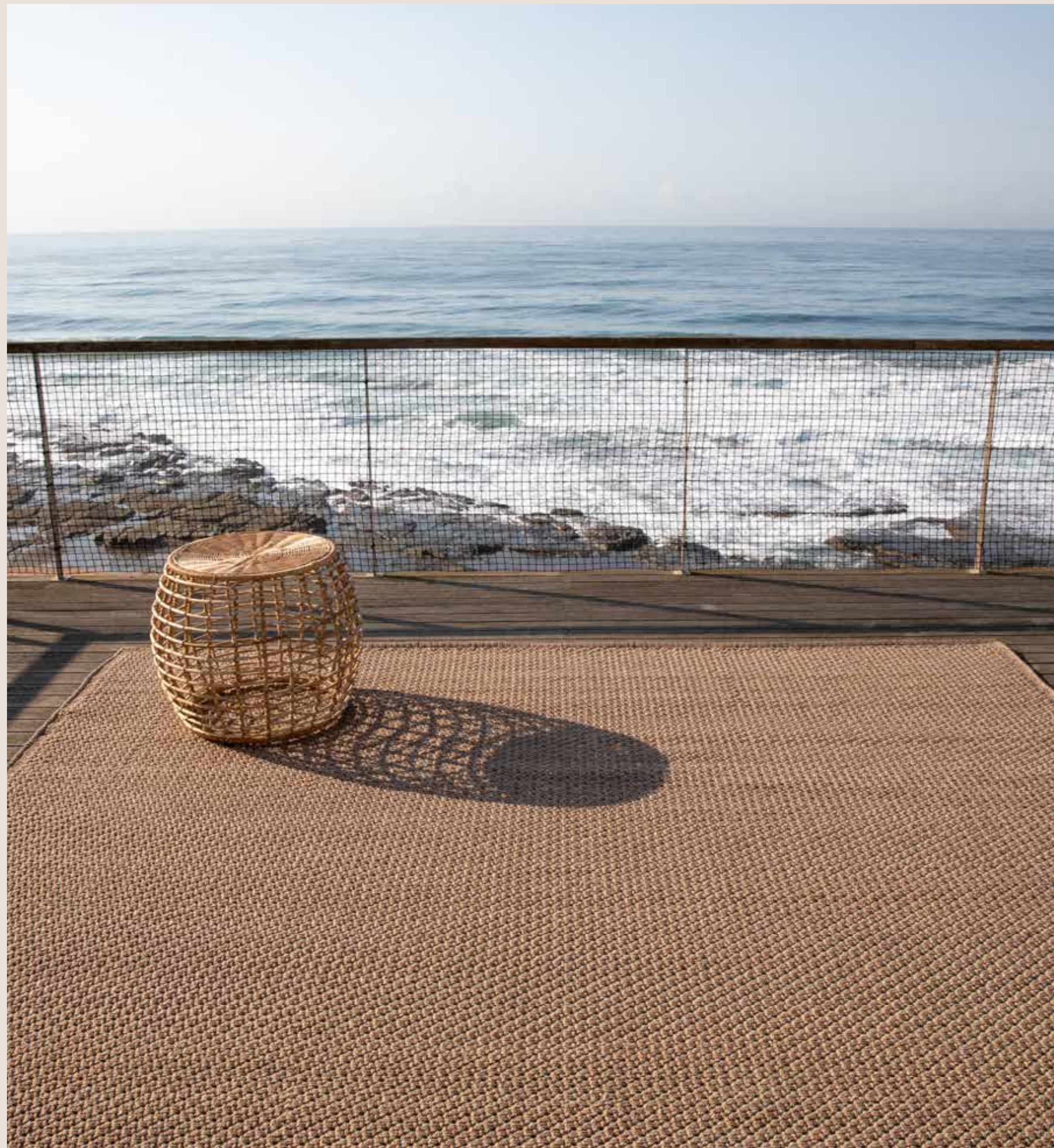
Give your living area, balcony or patio a touch of cosiness with this distinct rug. Naturally stain and fade resistant, this handwoven PET yarn rug is an excellent addition to any living space.

SIZE	PRICE
1.6 x 2.3	R11,211
2 x 3	R17,183
4 x 5	R52,948

Lingala Light

SIZE	PRICE
1.6 x 2.3	R11,211
2 x 3	R17,183
3 x 4	R32,245
4 x 5	R52,948





Sabi

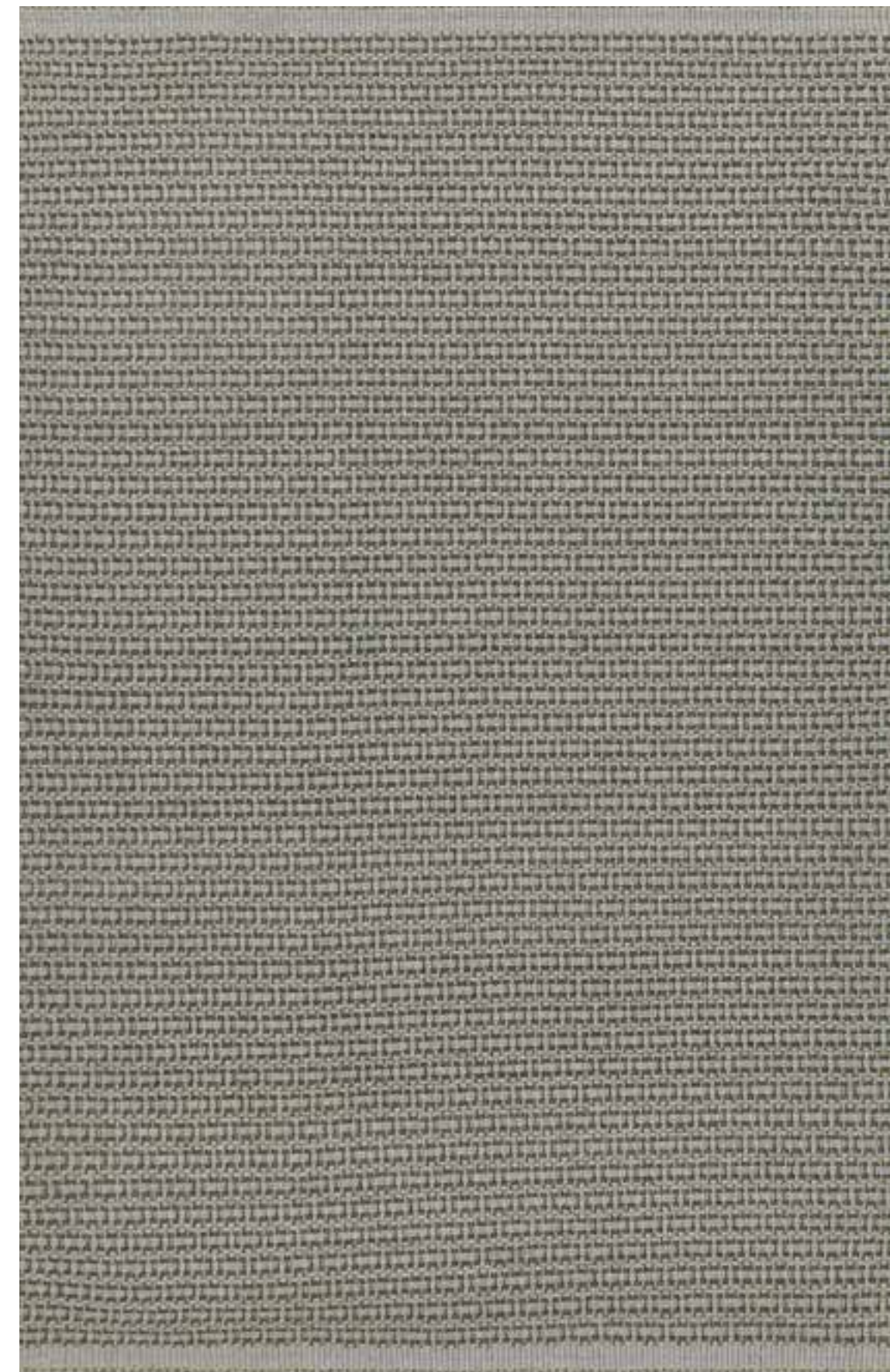
A plush weave of PP fibres offers luxurious texture under foot. 100% Polypropylene.

SIZE	PRICE
2 X 3	R13,350
3 X 4	R25,307
4 X 5	R41,865

Chobe

An earthy palette married to luxurious plushness. 100% Polypropylene.

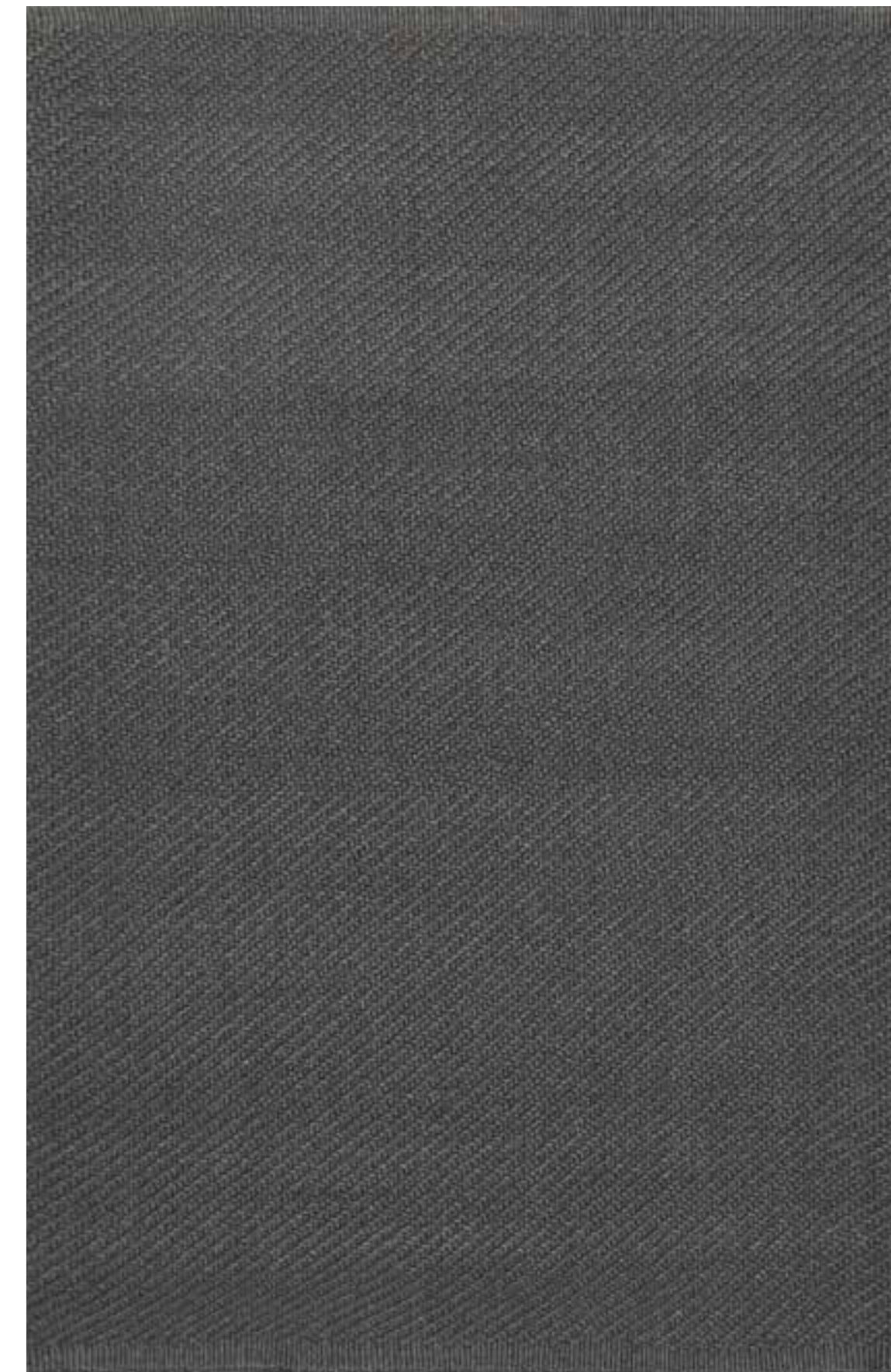
SIZE	PRICE
2 X 3	R14,642
3 X 4	R28,409
4 X 5	R47,383

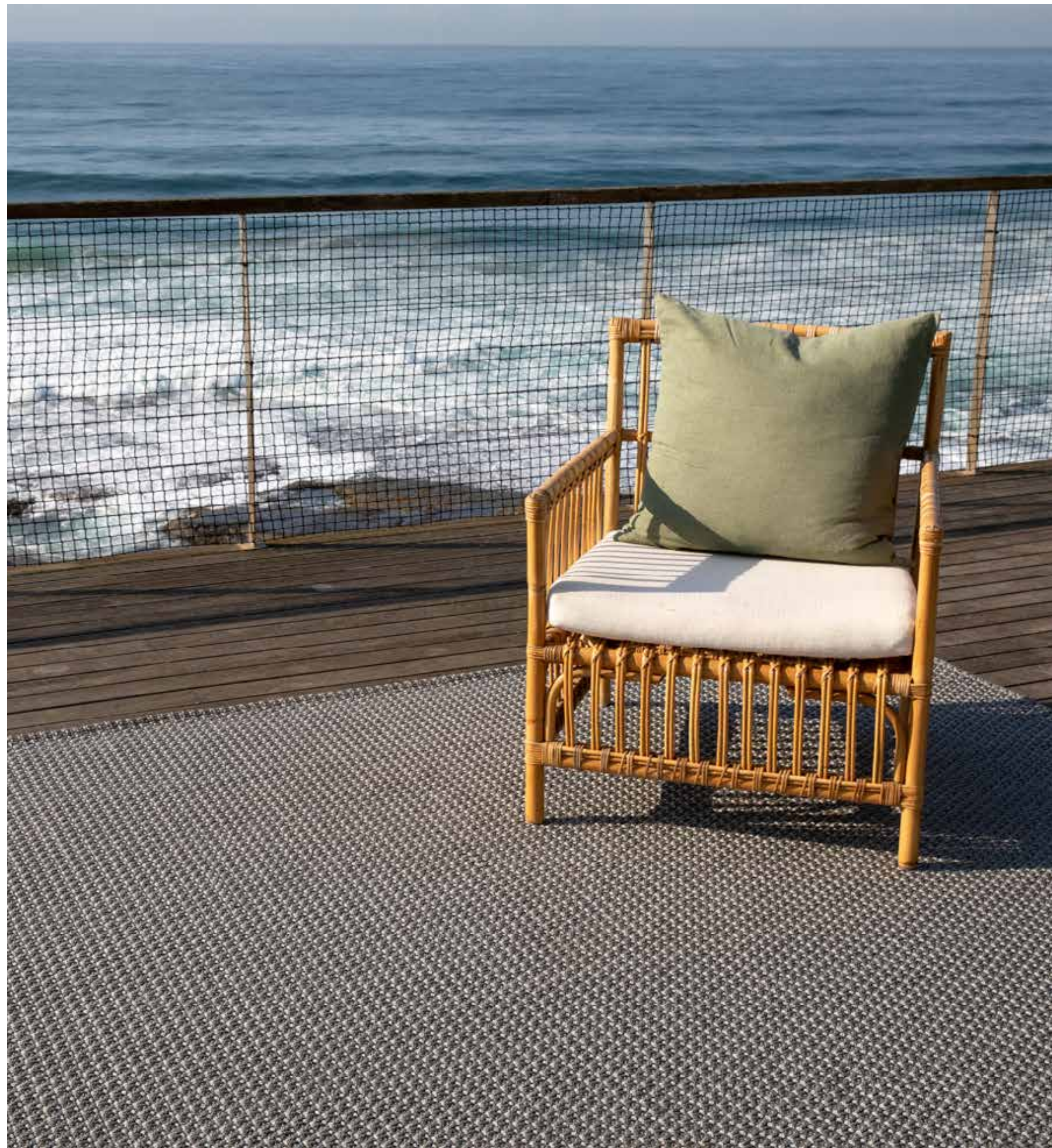


Basket

A durable PP weave that's timeless. 100% Polypropylene.

SIZE	PRICE
2 X 3	R14,642
3 X 4	R28,409
4 X 5	R47,383

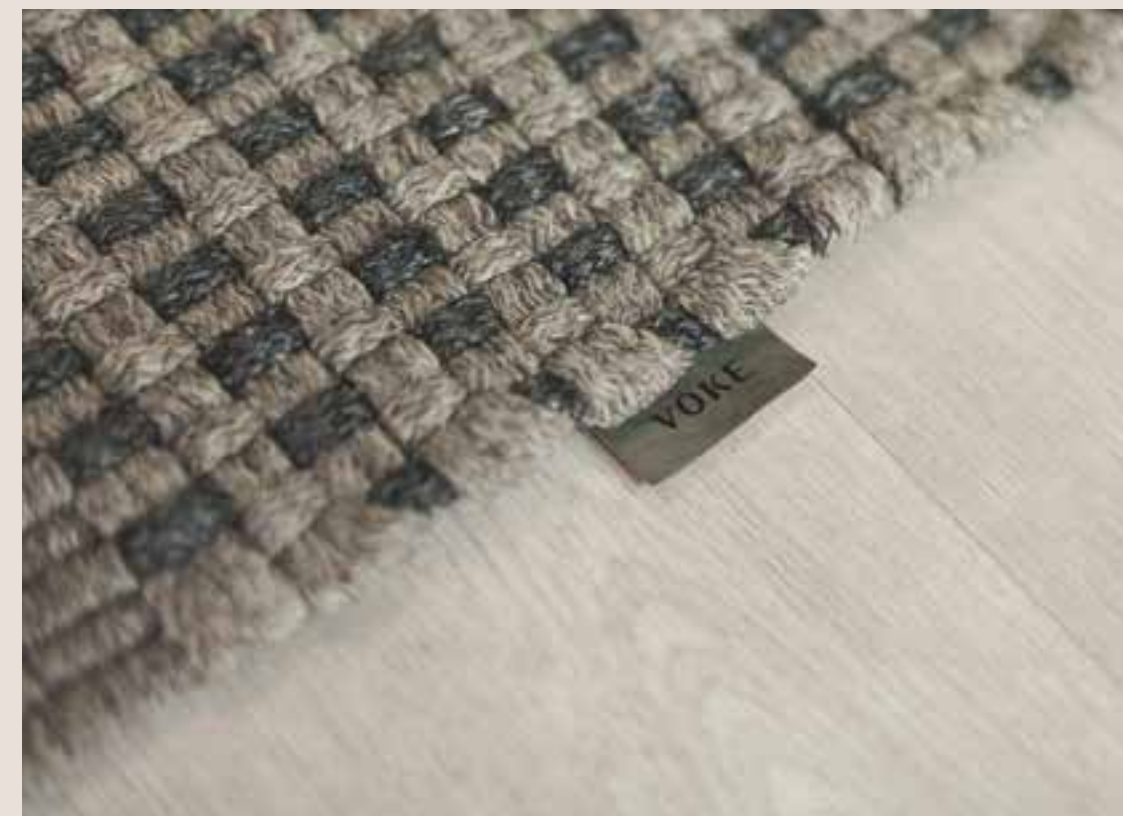




Savuti

PP fibres are woven to create a plush, comfortable texture under foot. 100% Polypropylene.

SIZE	PRICE
2 X 3	R13,350
3 X 4	R25,307
4 X 5	R41,865



Nest

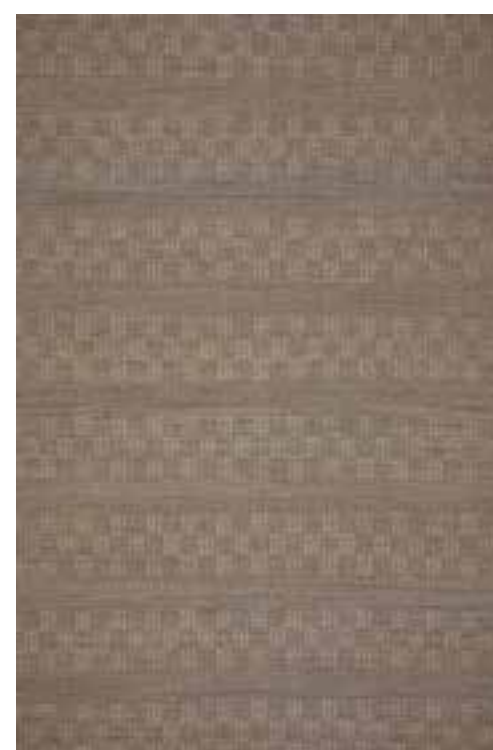
The understated styling of this flatwoven rug makes it the perfect base for a bolder look, or the finishing touch to a minimalist interior. Add an undertone of detail to your living spaces with the subtle patterning, accompanied by a classic selection of neutral shades.

SIZE	PRICE
2 x 3	R14,642
4 x 5	R47,383



Impilo

Super neutral in colour and texture. Polypropylene.



SIZE	PRICE
2 x 3	R10,568
3 x 4	R21,135
4 x 5	R35,225

Indlovu

As the name suggests, matches the colour of an elephant. African design at it's best here. Polypropylene.



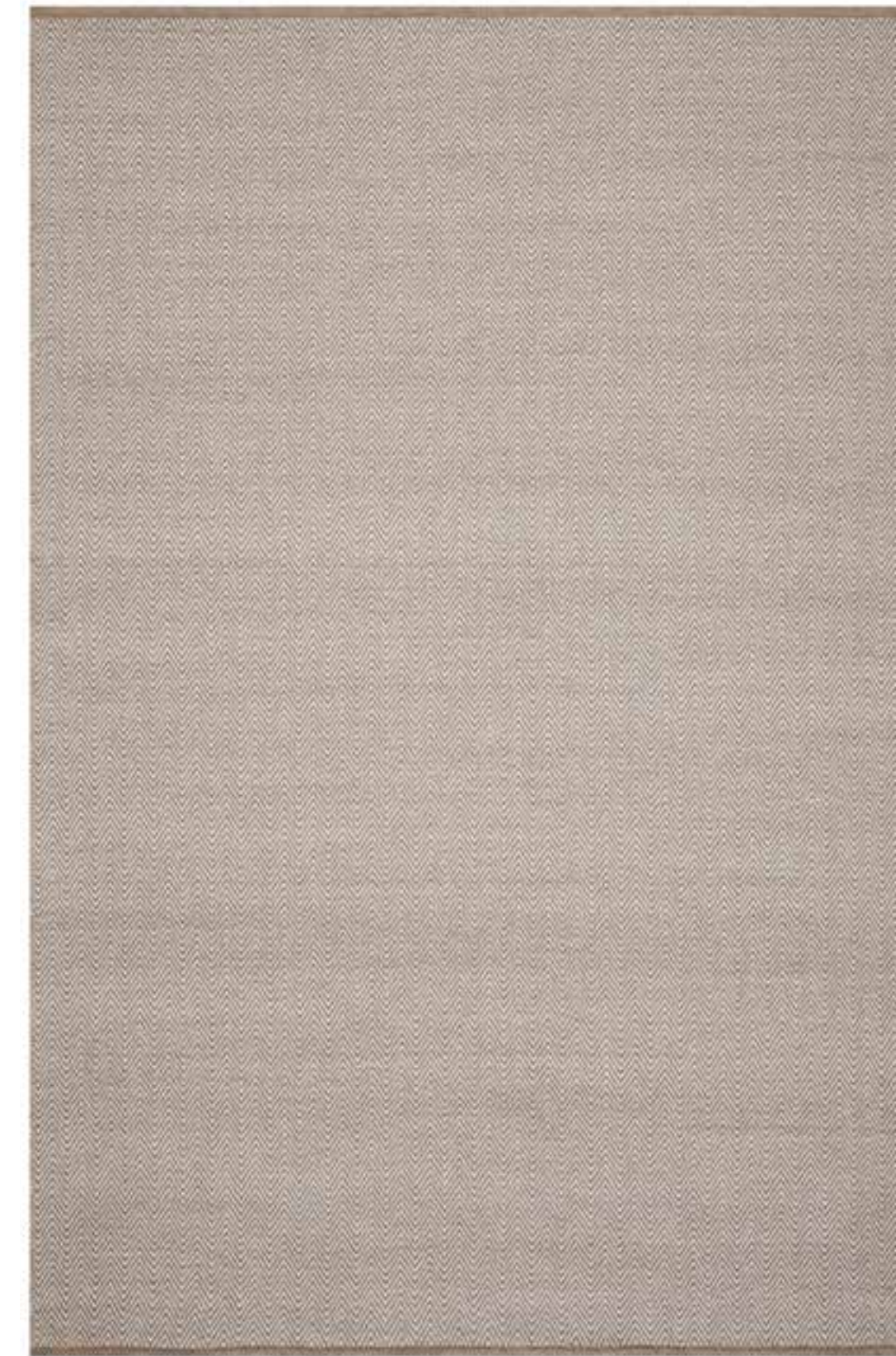
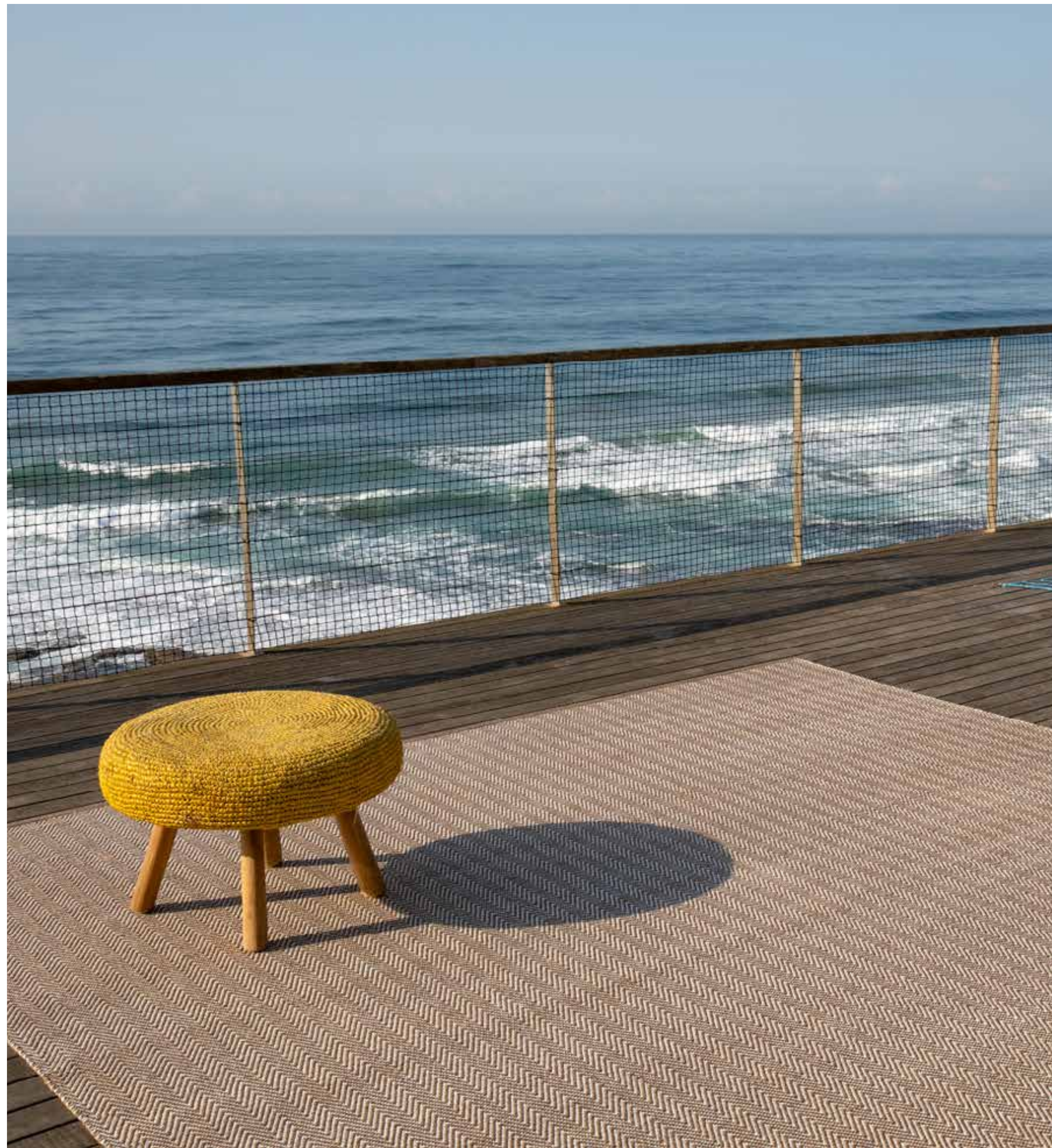
SIZE	PRICE
2 x 3	R9,542
3 x 4	R19,085
4 x 5	R31,803

Nelson

Handsome, basket weave in a charcoal colour - this outdoor rug was made for the African climate. Polypropylene



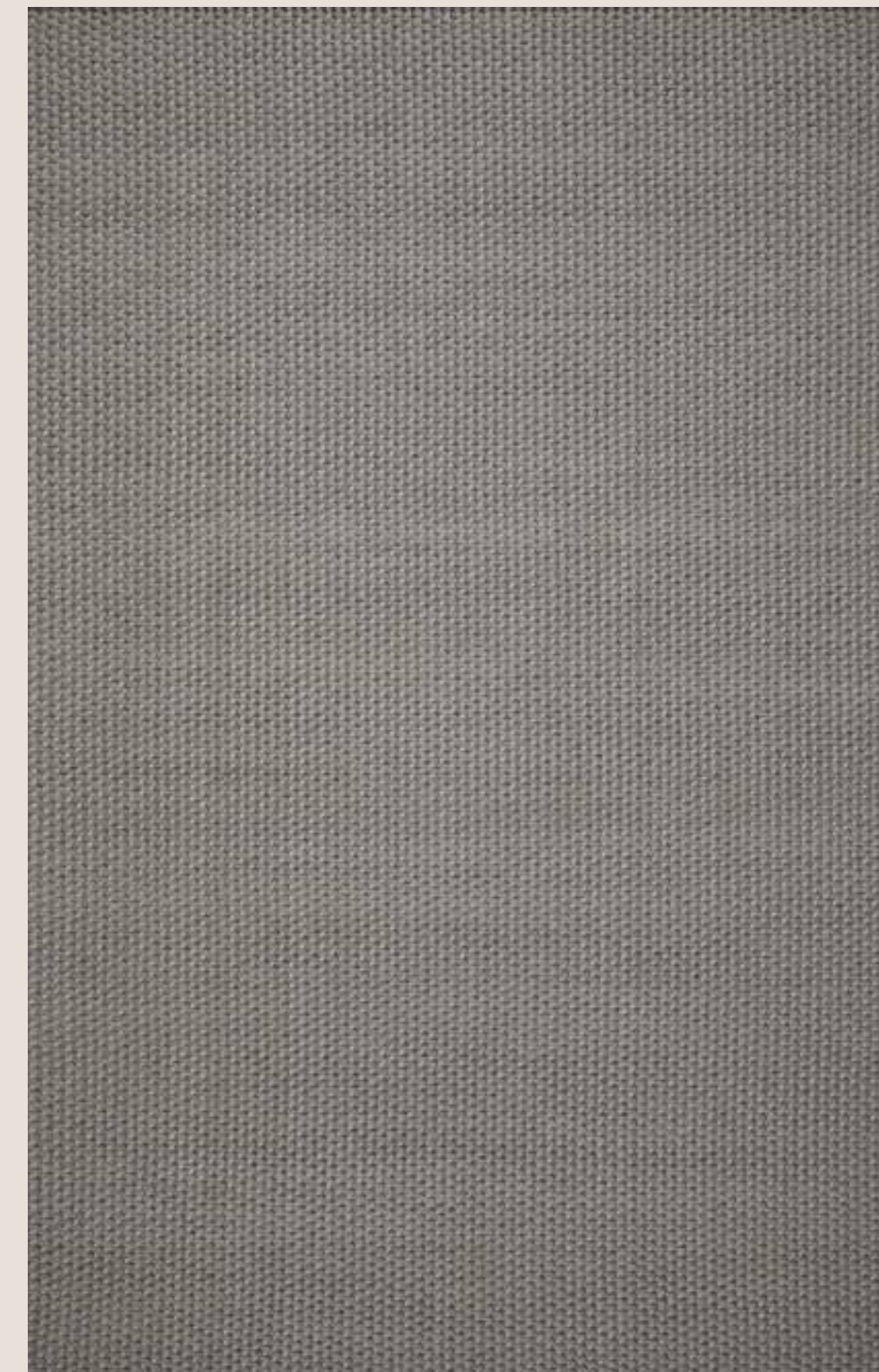
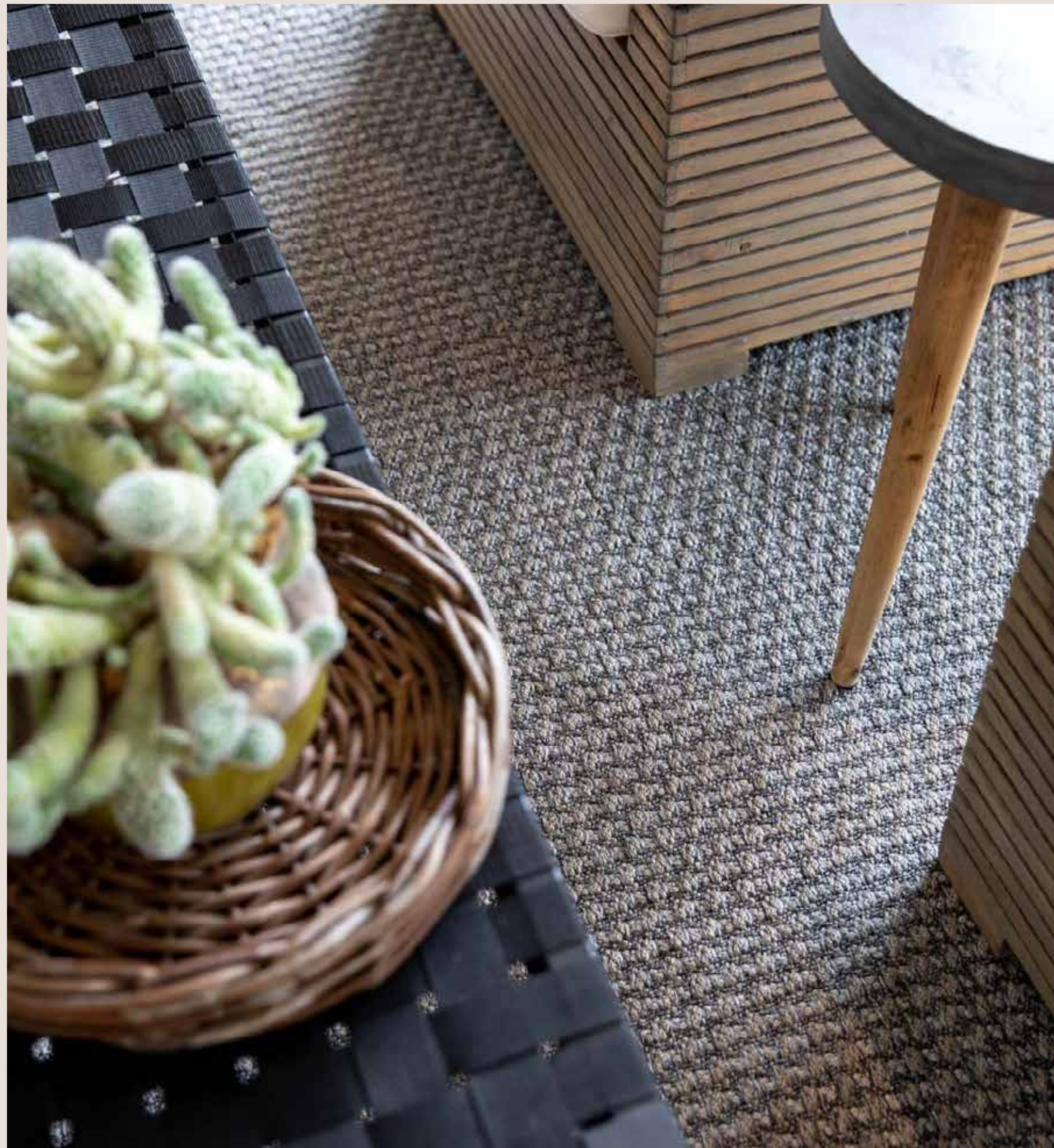
SIZE	PRICE
2 x 3	R16,215
3 x 4	R32,430
4 x 5	R54,049



Kalahari

A new take on our outdoor herringbone rugs, this time in earthy tones to match it's surrounds. Polypropylene.

SIZE	PRICE
2 x 3	R8,515
3 x 4	R17,029
4 x 5	R28,380



Tugela

This rug's natural hue, versatile design, and understated tone mean it will be a great addition to a range of indoor and outdoor spaces. Handwoven with durable materials, this piece is made to last.

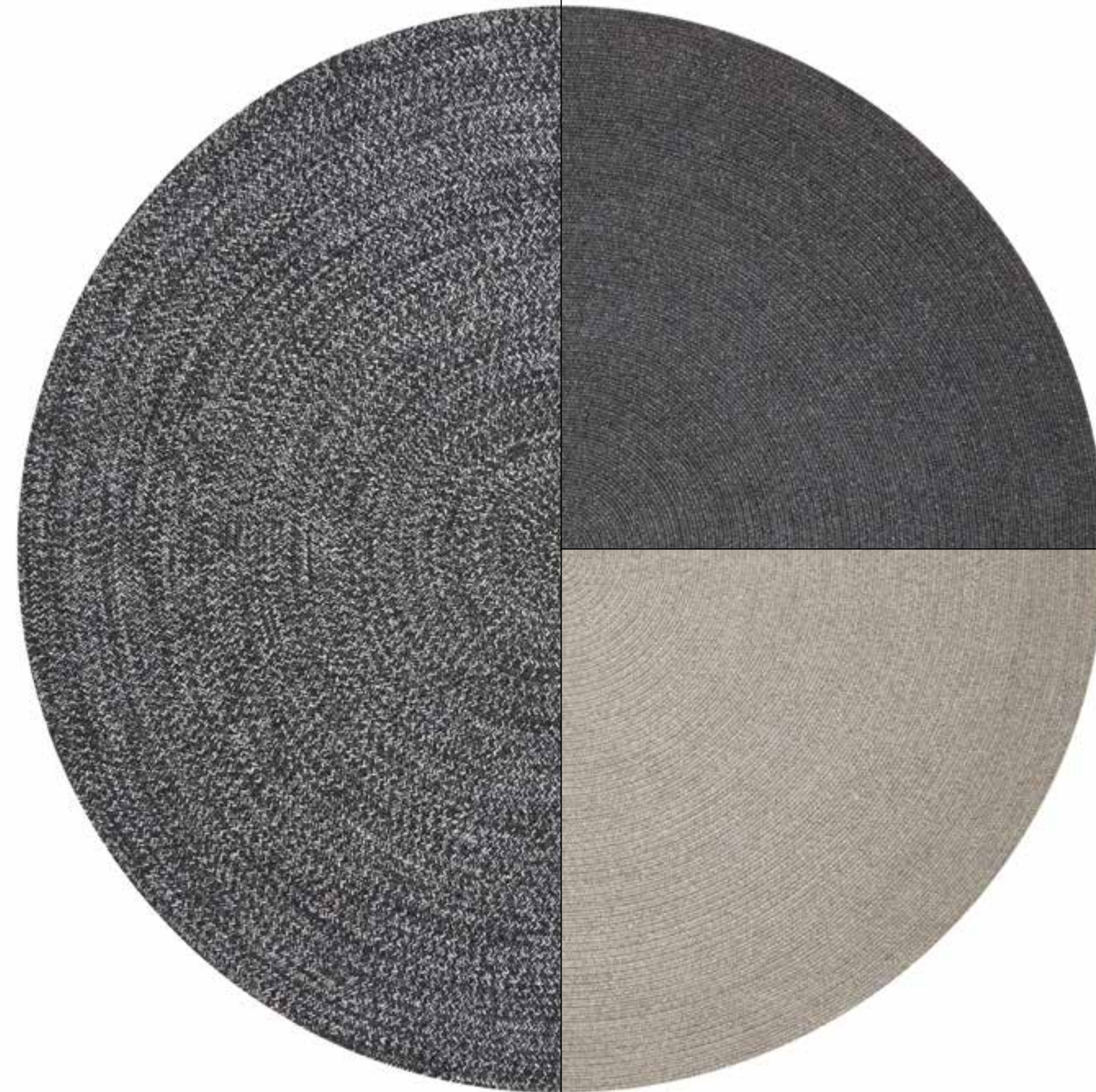
SIZE	PRICE
2 x 3	R13,136
3 x 4	R26,270
4 x 5	R43,782



Moremi

Black and white yarn is combined into a long braid which is then stitched into a circle to create this rug's distinct round shape. The 100% PET yarn composition makes it warm, luxuriously soft, and durable. Characterised by a textured black and white colour palette, this handwoven rug will accentuate both the flooring below it and the décor around it.

SIZE	PRICE
1.8m Round	R5,972



Lapa

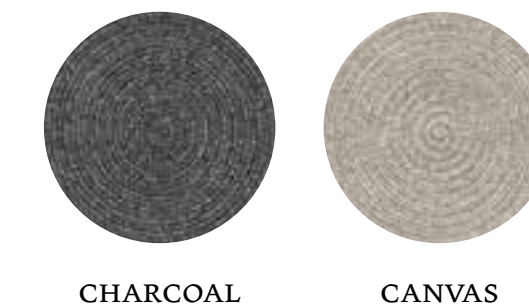
Bring some extra texture to your indoor and outdoor spaces with this rug. The traditional techniques used to craft this piece give it a uniquely chunky texture for maximum comfort and character.

SIZE	PRICE
1.8m Round	R3,212
2.2m Round	R4,798

Shaka

Boasting a blend of rich colour and simple design, this rug can be used to bring a refined natural texture to a minimal interior or as a final touch for a bolder space. Whether those spaces are indoors or outdoors, this rug's hardy structure and durable materials make it an excellent choice.

SIZE	PRICE
1.8m Round	R3,212
2.2m Round	R4,798

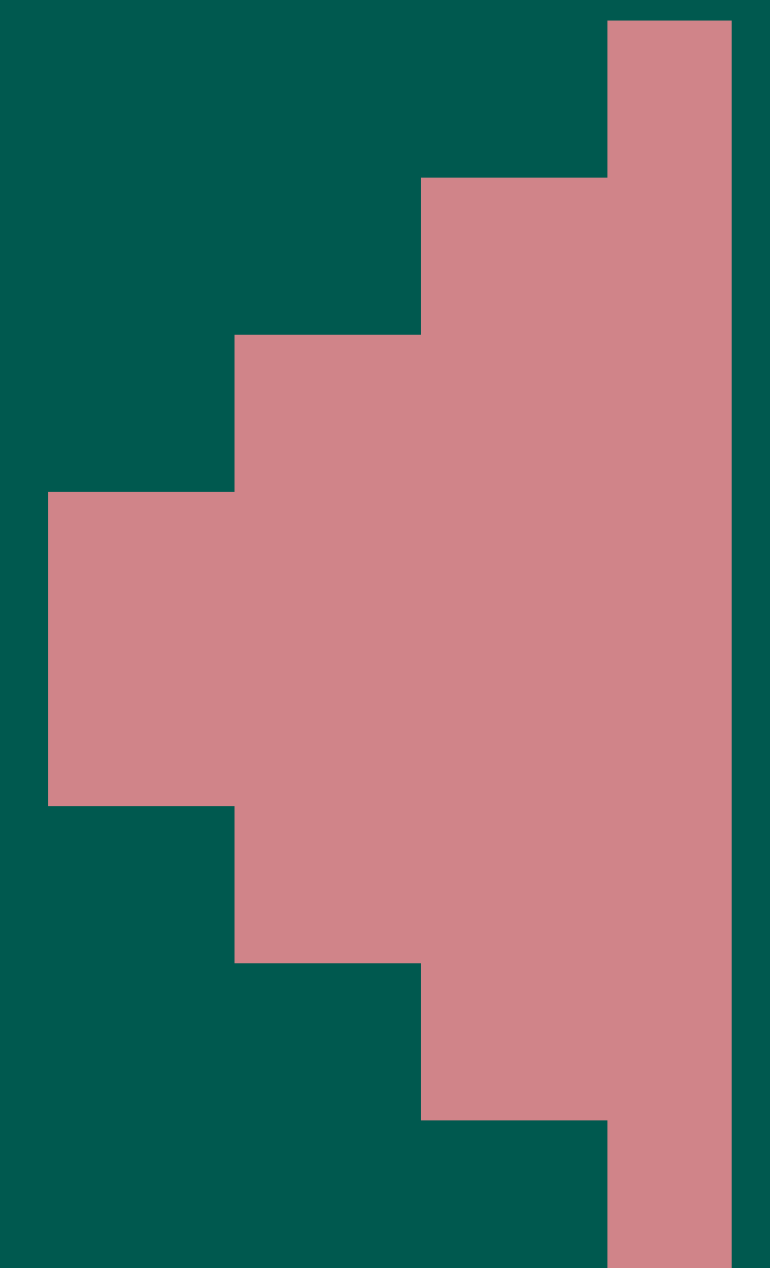


: ELEMENTS COLLECTION

You could call us rug addicts, but seriously, we are dedicated to sourcing distinctive rugs for people who value quality underfoot as much as we do.”

Our crafters use techniques deeply rooted in tradition, and each technique leads to a distinct texture. Our textured collection echoes our desire to bring you products with a story as distinguished as your home. Feel the texture, feel the story.

TO EVOKE A CULTURE
OF
RUG APPRECIATION



Luxe: The Wide Eyed Collection

The objects that we adore are passionately crafted and effuse authenticity. Handwoven by people who are passionate about their craft, using only the finest materials, these rugs are made to be cherished. The Wide Eyed Collection features our most prestigious rugs, designed to add a touch of luxury to your space.





Sunset

Formal, considered and soft under foot, making this a "loud and proud" artwork for your floor.

SIZE	PRICE
2 x 3	R7,257
3 x 4	R14,514



Harmony

This wild design and combination of colours will turn heads.



SIZE	PRICE
2 x 3	R8,164
3 x 4	R16,328

Village

Your eyes will doodle around the lines handwoven into this modern statement piece - this is art on the floor.



SIZE	PRICE
2 x 3	R9,473
3 x 4	R18,945
4 x 5	R31,575

Village: Citrus

There's a lot going on here and you may find yourself staring for a while at the shapes and patterns handwoven here



SIZE	PRICE
2 x 3	R10,659
3 x 4	R21,318
4 x 5	R35,530



Navajo

Strong geometric patterns inspired by the west. 35% Jute, 25% Wool, 20% Cotton, 20% Latex. Handwoven flatweave.

SIZE	PRICE
2 x 3	R12,675
3 x 4	R25,349
4 x 5	R43,958

Nama

Bring a touch of luxurious sophistication to a range of spaces with this handwoven rug. Each corner features an oversized tassel that adds a touch of quirkiness to an otherwise understated piece.

SIZE	PRICE
0.8 x 3,5	R6,490
1.6 x 2.3	R8,529
2 x 3	R13,905
3 x 4	R32,225



Masai

Characterised by a bold and distinctly African design, this rug was inspired by the striking patterns found in traditional Maasai dress. The handwoven wool-cotton blend creates a luxurious softness underfoot that can be enjoyed in a range of spaces.

SIZE	PRICE
2 x 3	R16,309
3 x 4	R30,496
4 x 5	R50,031





Wisdom

An updated take on colour-blocking, this handwoven rug is an eye-catching blend of traditional craft and modern aesthetics. This piece is an excellent choice for adding a touch of refined vibrance to any indoor space.

SIZE	PRICE
2 x 3	R20,144
3 x 4	R40,287
4 x 5	R67,146



Tokyo

A showstopper crafted from a mix of fibres to create the various shapes. 35% Jute, 30% Wool, 15% Cotton, 20% Latex. Handwoven flatweave.

SIZE	PRICE
2 x 3	R10,981
3 x 4	R21,960
4 x 5	R38,310



Peru

Colours, materials and structure take you away. 40% Jute, 25% Wool, 15% Cotton, 20% Latex. Handwoven flatweave.

SIZE	PRICE
2 x 3	R12,675
3 x 4	R25,349
4 x 5	R43,958



Tide

Inspired by the ocean with a distinctly calming nature. 90% Wool, 10% Cotton.

SIZE	PRICE
0.8 x 3.5	R6,010
2 x 3	R12,878
3 x 4	R25,756

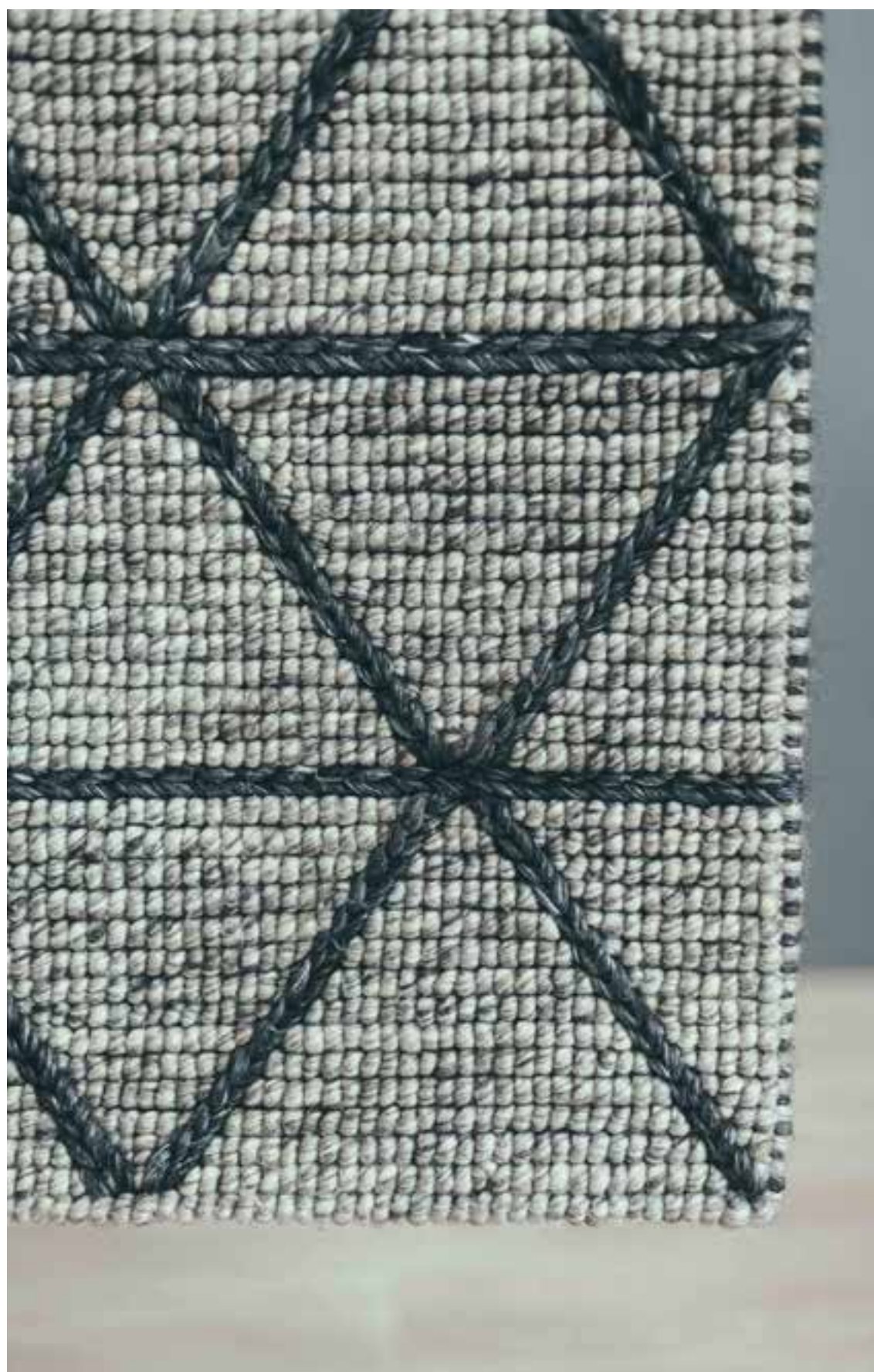


: LUXE COLLECTION

Lemba

An all-time favourite, the ever-popular Lemba rug is luxury embodied. Featuring a refined geometric pattern set on a textured grey back-drop, this hand-knotted rug is an excellent choice for elevating a range of indoor spaces.

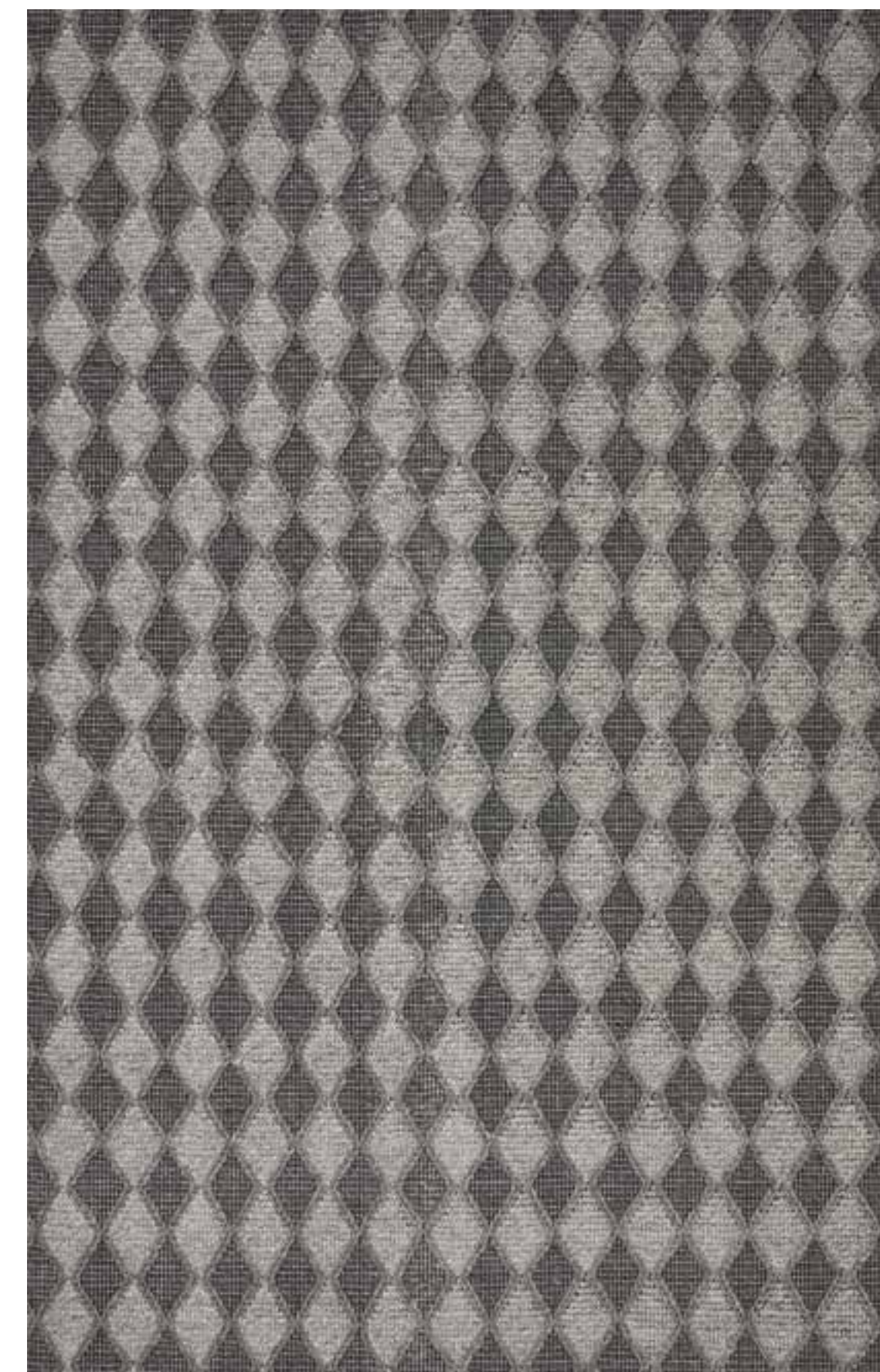
SIZE	PRICE
1.6 x 2.3	R14,826
2 x 3	R24,172
3 x 4	R48,344



Luxe

The epitome of luxury - super soft under foot and very easy on the eye.

SIZE	PRICE
2 x 3	R19,716
3 x 4	R39,432
4 x 5	R65,720





Marriage

This rug seamlessly blends strong symbols and colours to form a luxurious statement piece. The combination of wool and viscose makes this a perfect addition to a range of indoor spaces.

SIZE	PRICE
2 x 3	R20,957
3 x 4	R41,913
4 x 5	R69,855

Grounded: The Nature Collection

Inspired by the unpretentious sophistication of the wilderness, these rugs were selected to help you create a refined and understated space. Handcrafted using traditional techniques, our Nature Collection brings you timeless rugs that are well-suited to a range of living spaces.



Thorn

Modern, clean lines make this woolen beauty a versatile piece.

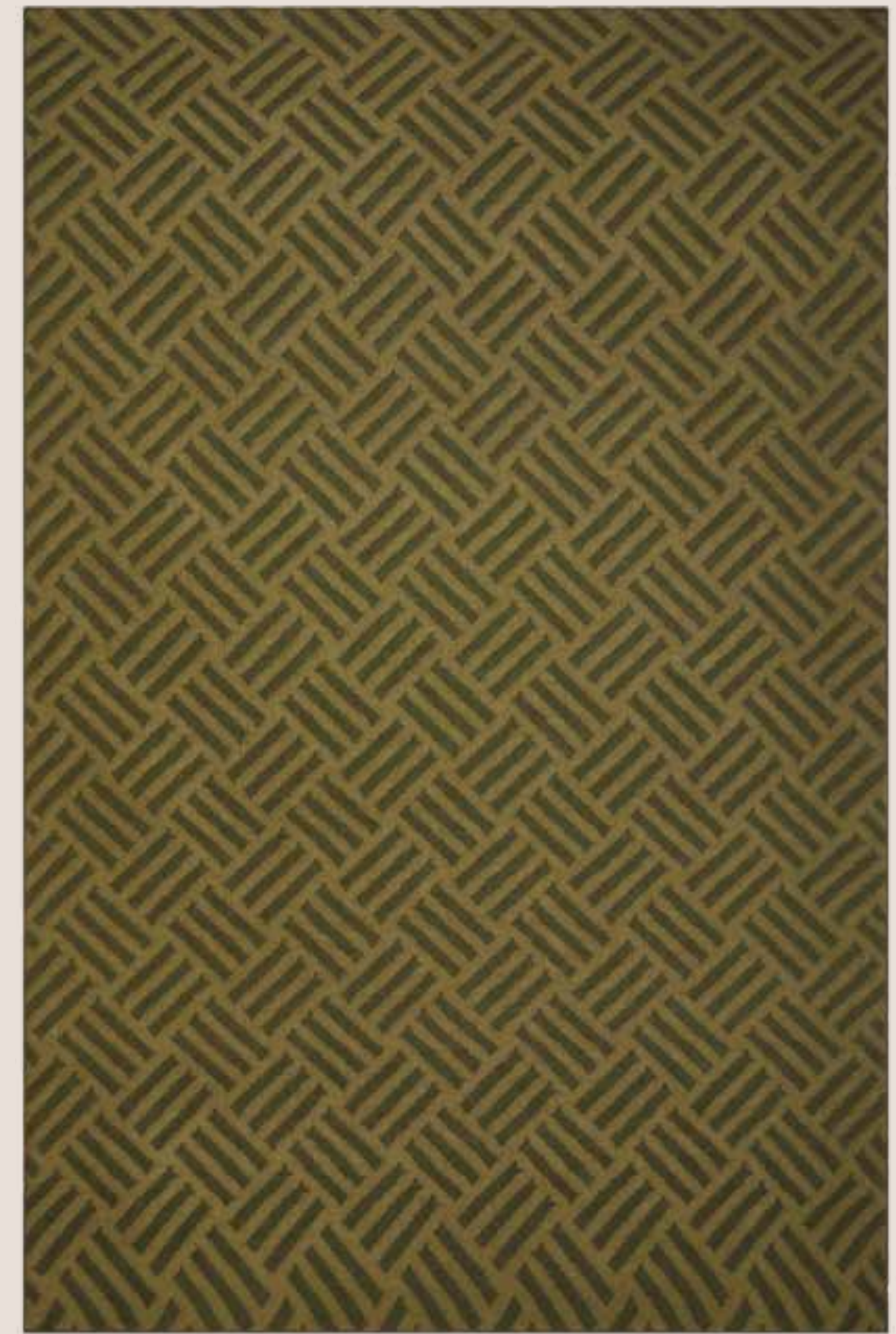
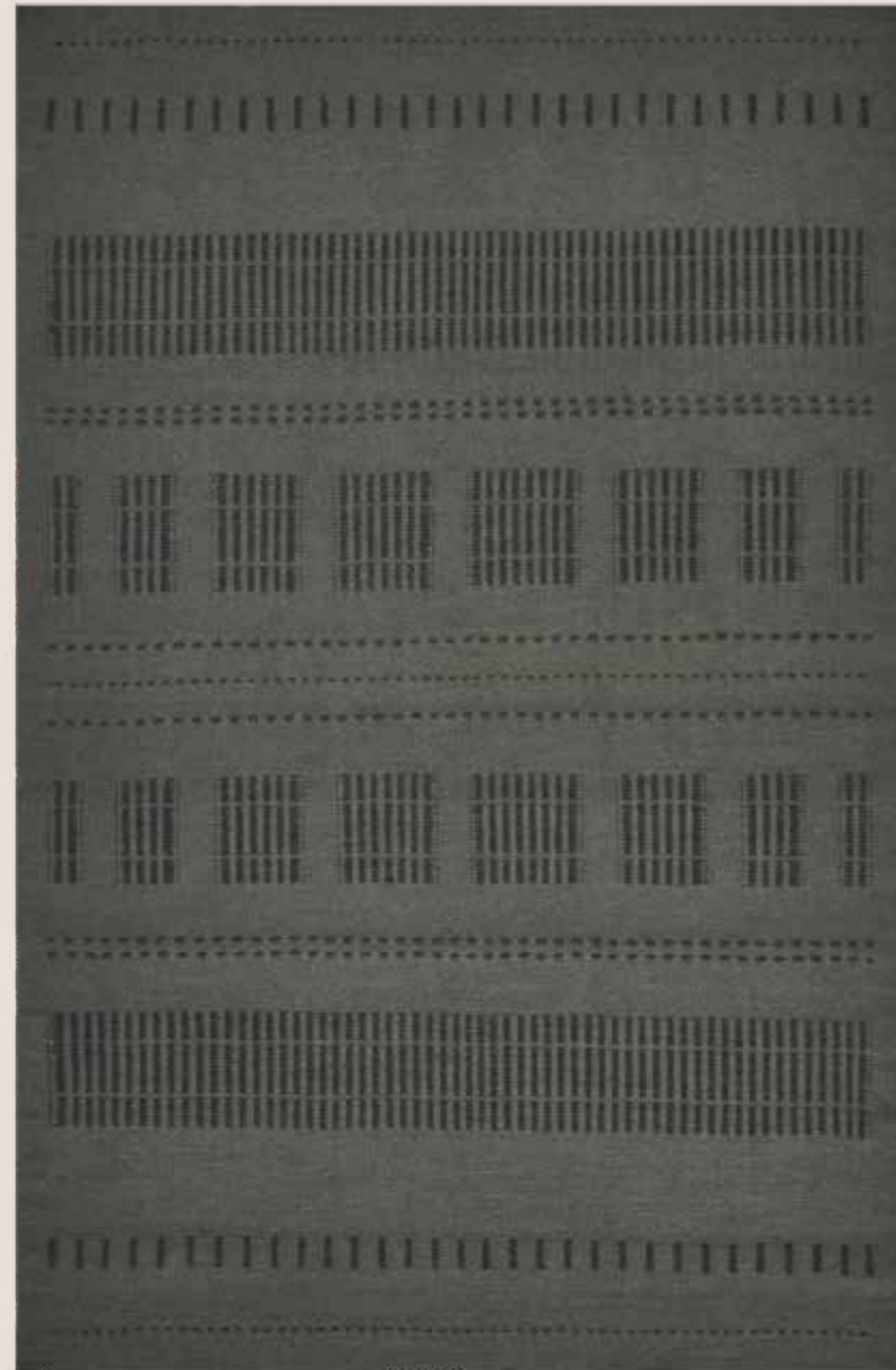
SIZE	PRICE
2 x 3	R8,339
3 x 4	R16,677
4 x 5	R27,795



Braids

Drawing inspiration from the African braids, this is bold in design, understated in colour.

SIZE	PRICE
1.6 x 2.3	R5,104
2 x 3	R8,321
3 x 4	R16,642
4 x 5	R27,737



Stone

A beautiful neutral piece with an interesting weave creating a soft cushion under foot.

SIZE	PRICE
2 x 3	R11,780
3 x 4	R23,560
4 x 5	R39,266

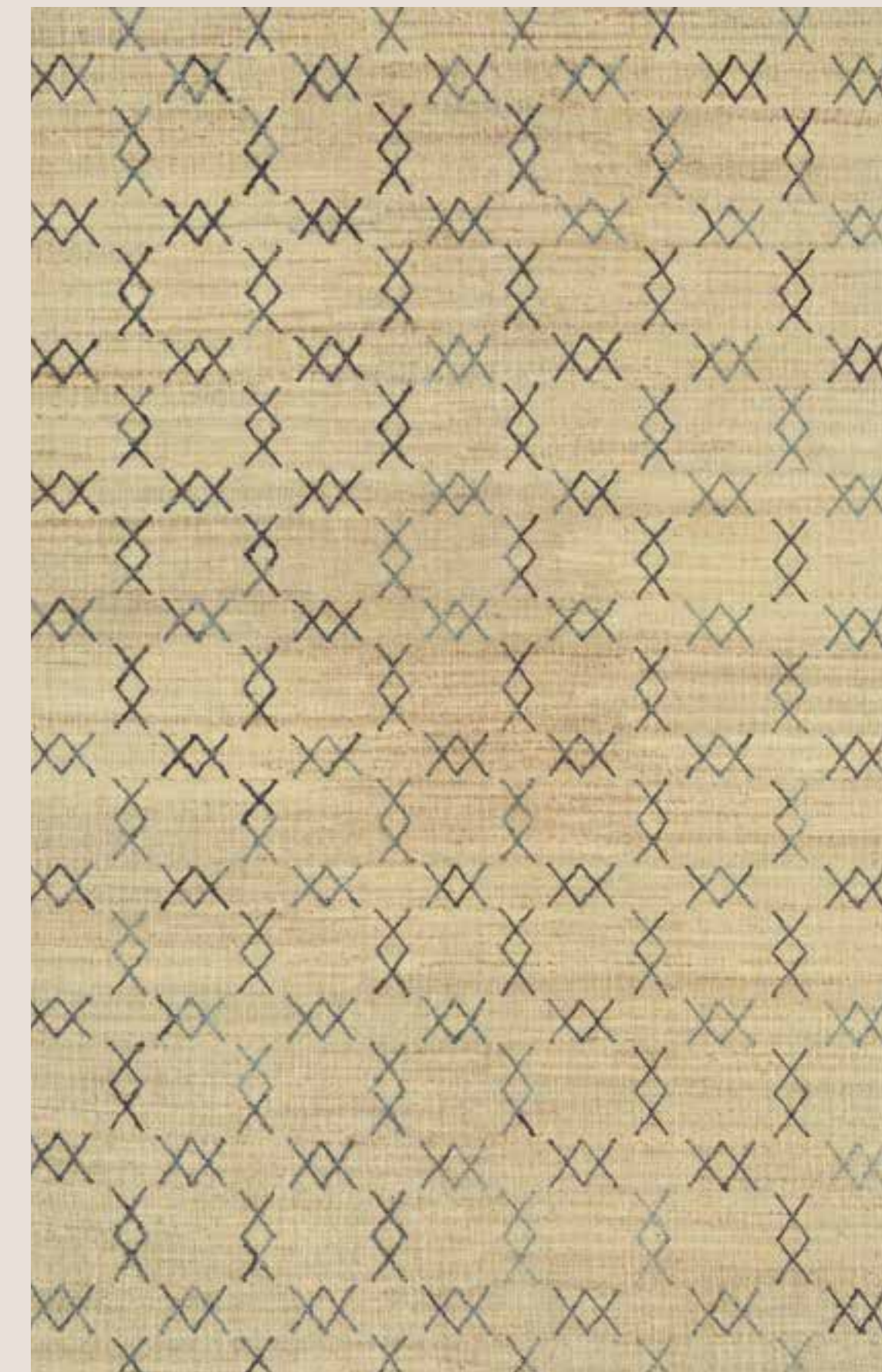
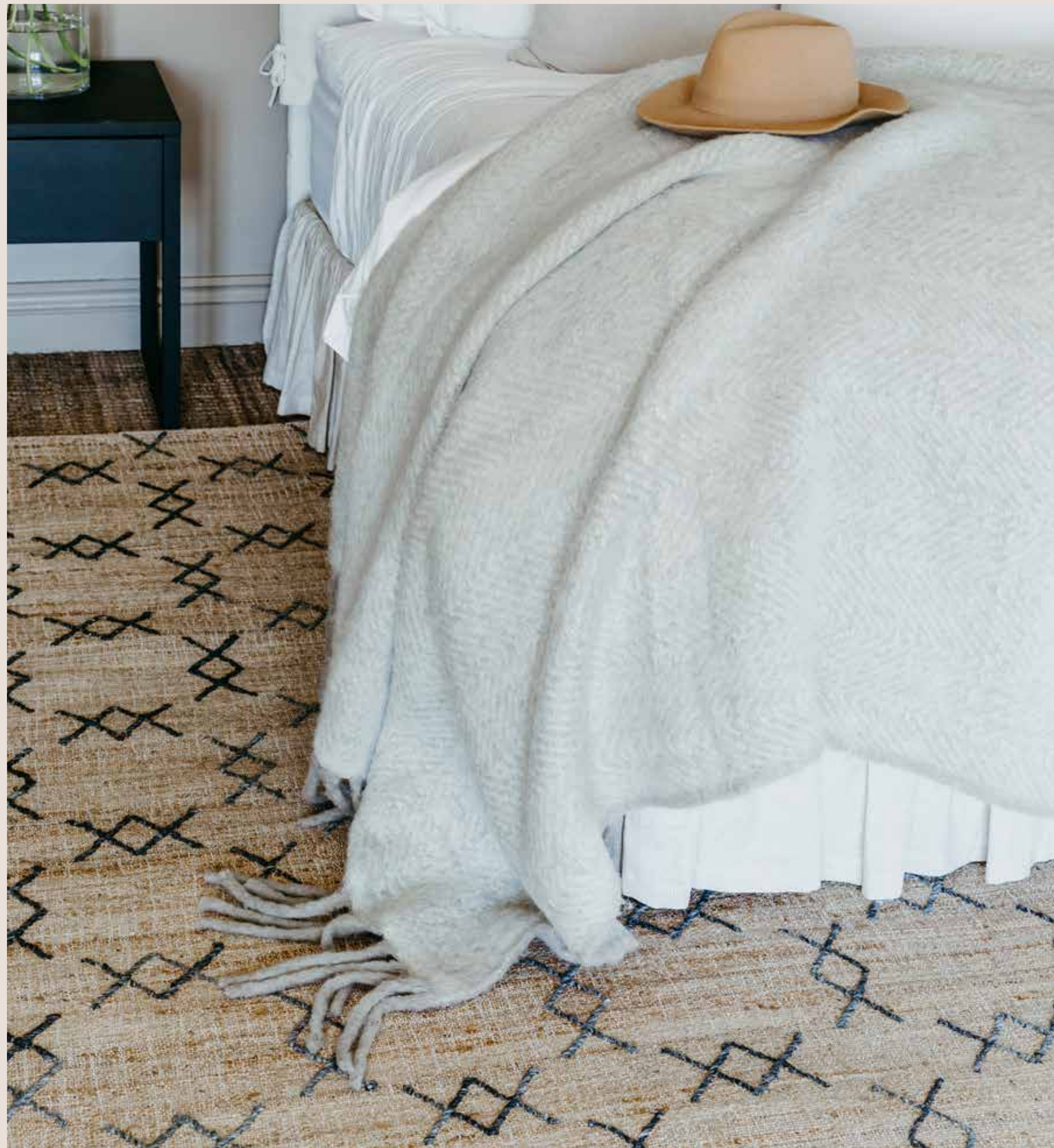


Tribe

This rug draws inspiration from colours and patterns of African design, adding a touch of luxury to any room.

SIZE	PRICE
2 x 3	R11,253
3 x 4	R22,505
4 x 5	R37,508





Kudu

With a pattern that pays tribute to the spiralled horns of the elegant Kudu, coupled with refined earthy tones, this versatile rug was designed to work equally well in a range of indoor living spaces. The handwoven blend of materials makes this rug both durable and soft to the touch.

SIZE	PRICE
2 x 3	R10,468
3 x 4	R20,934
4 x 5	R36,599



Clay

A beautifully natural aesthetic with earthy colours and textures. 30% Jute, 30% Wool, 20% Cotton, 20% Latex. Handwoven flatweave.

SIZE	PRICE
2 x 3	R10,210
3 x 4	R20,420
4 x 5	R35,744



Veld

Delivers colour and texture that's warm and mood enhancing. 60% Jute, 20% Cotton, 20% Latex. Handwoven flatweave.

SIZE	PRICE
0.8 x 3	R3,243
2 x 3	R8,106
3 x 4	R16,211
4 x 5	R28,727



Bark

Intriguing yet understated due to the natural shades of yarn. 80% Jute, 20% Cotton.

SIZE	PRICE
1.6 x 2.3	R9,184
2 x 3	R13,878
3 x 4	R25,636



: GROUNDED COLLECTION



Chino

A blend of premium materials creates a luxurious mix of soft robustness, making this a great addition to your indoor spaces. Inspired by the versatility of the classic chino pants, this handwoven rug is also well suited for both formal and informal atmospheres.

SIZE	PRICE
2 x 3	R10,981
3 x 4	R21,960
4 x 5	R38,310



Camel

Beautifully rich colour and inspired pattern. 40% Jute, 25% Wool, 15% Cotton, 20% Latex. Handwoven flatweave.

SIZE	PRICE
2 x 3	R10,981
3 x 4	R21,960
4 x 5	R38,310



Siya

Boldly masculine design that makes a statement. 45% Jute, 10% Wool, 10% Viscose, 15% Cotton, 20% Latex. Handwoven flatweave.

SIZE	PRICE
0.8 x 3	R4,085
2 x 3	R10,210
3 x 4	R20,420
4 x 5	R35,744



Hive

Intricately beautiful and inspired by nature. 30% Jute, 30% Wool, 20% Cotton, 20% Latex. Handwoven flatweave.

SIZE	PRICE
2 x 3	R12,289
3 x 4	R24,578
4 x 5	R42,675



Horizon

Like the boundary between earth and sky you'll stare at this rug for ages. 35% Jute, 30% Wool, 20% Cotton, 20% Latex. Handwoven flatweave.

SIZE	PRICE
2 x 3	R12,289
3 x 4	R24,578
4 x 5	R42,675



: GROUNDED COLLECTION

Bok

This rug is expertly handwoven with a blend of soft and robust materials including jute, wool, and cotton. Featuring a striking combination of bold stripes and earthy colours, this piece will upgrade any indoor living space for years to come.

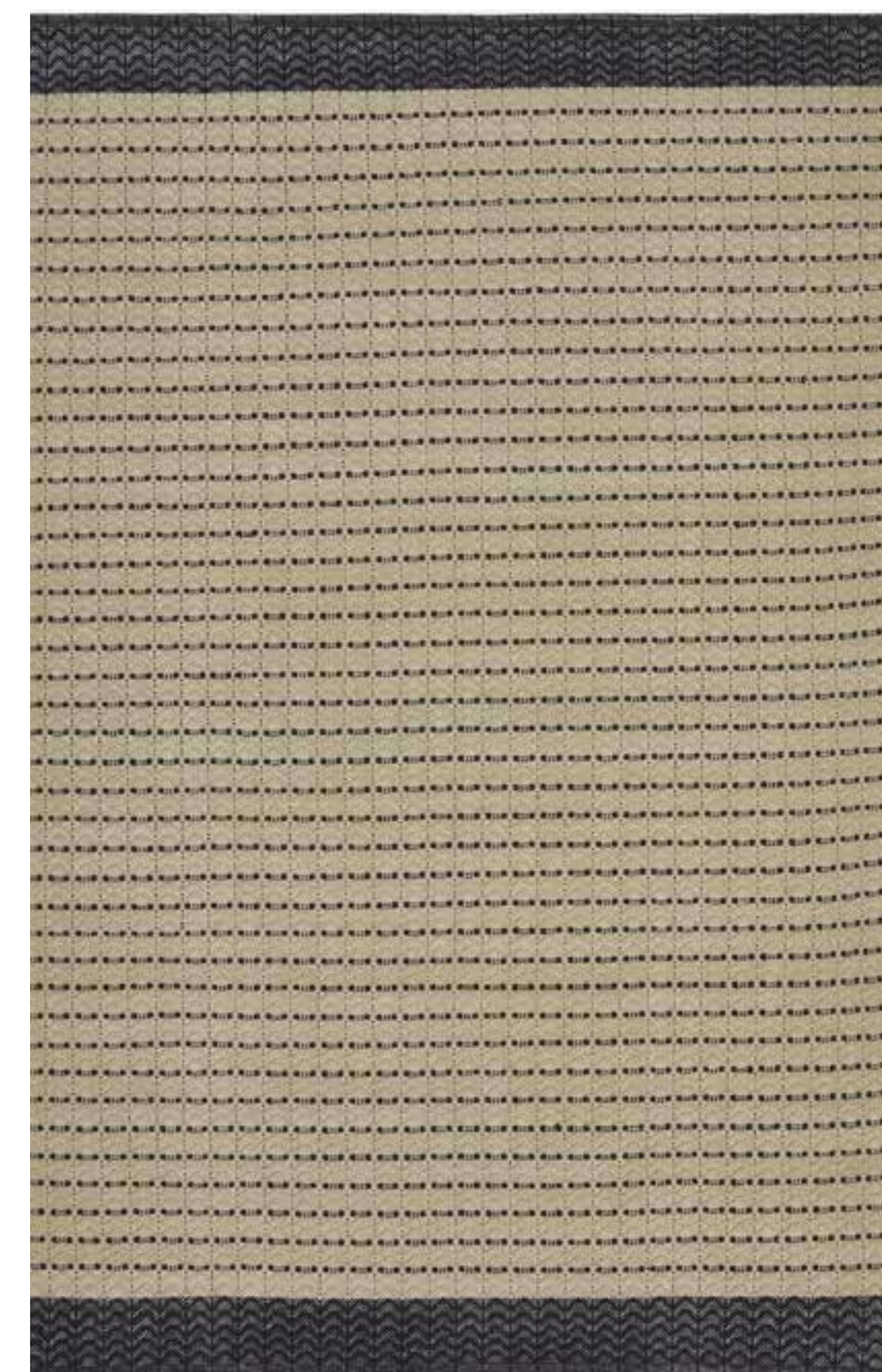
SIZE	PRICE
2 x 3	R10,210
3 x 4	R20,420
4 x 5	R35,744



Dune: Original

Add the finishing touch to almost any space with this lightweight rug. Boasting versatile patterns and colours, it'll enhance any bedroom or living area.

SIZE	PRICE
1.6 x 2.3	R4,291
3 x 4	R5,905
4 x 5	R10,355





Zag

A dynamic herringbone pattern that adds a lot of energy to a room. 35% Jute, 30% Wool, 15% Cotton, 20% Latex. Handwoven flatweave.

SIZE	PRICE
0.8 x 3	R4,392
2 x 3	R10,981
3 x 4	R21,960
4 x 5	R38,310



Umber

A geometric pattern inspired by Africa and a rich earth pigment. 45% Jute, 15% Wool, 20% Cotton, 20% Latex. Handwoven flatweave.

SIZE	PRICE
0.8 x 3	R5,071
2 x 3	R12,675
3 x 4	R25,349
4 x 5	R43,958



Mara

Inspired by life in Africa and featuring organically formed pattern. 40% Jute, 25% Wool, 15% Cotton, 20% Latex. Handwoven flatweave.

SIZE	PRICE
2 x 3	R10,981
3 x 4	R21,960
4 x 5	R38,310



Kimberly

A rug that pays tribute to a girl's best friend, diamonds. 35% Jute, 15% Wool, 15% Polyester, 20% Latex. Handwoven flatweave.

SIZE	PRICE
2 x 3	R10,468
3 x 4	R20,934

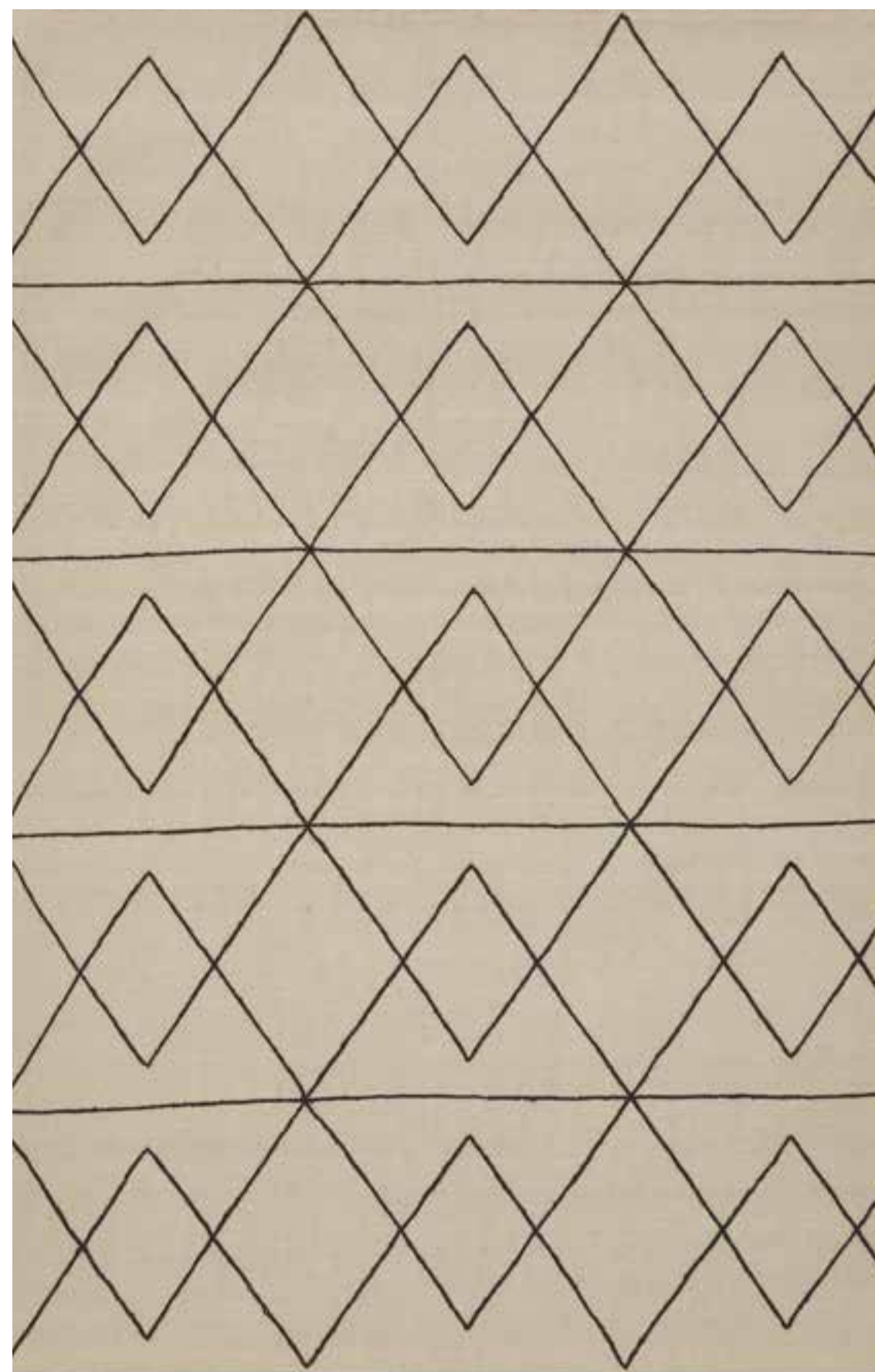


: GROUNDED COLLECTION

Peak

Add the finishing touch to your space with this handwoven rug. Whether it's a playroom or a home office, this rug will bring a touch of refined playfulness to any space.

SIZE	PRICE
4 x 5	R27,671

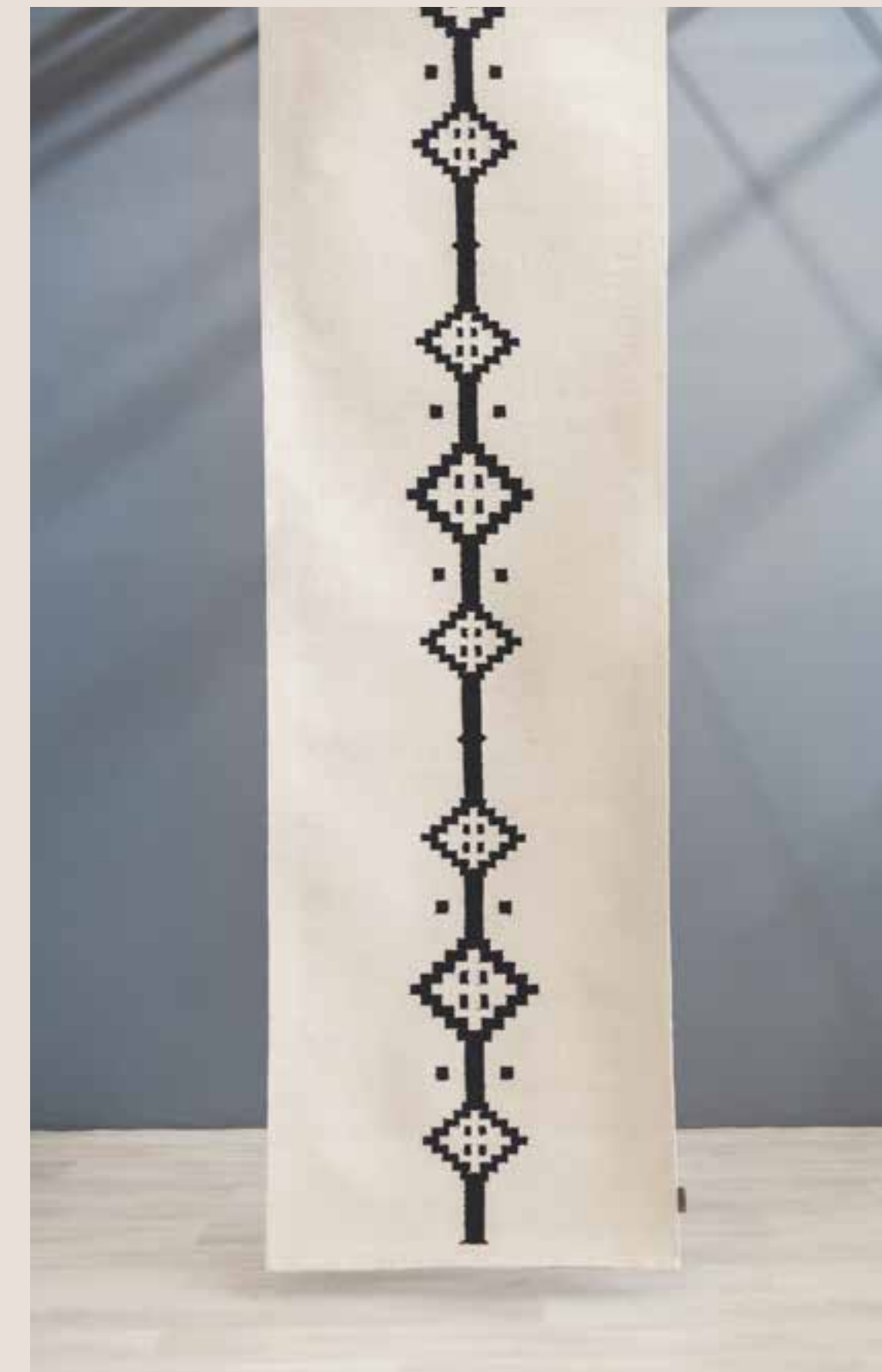
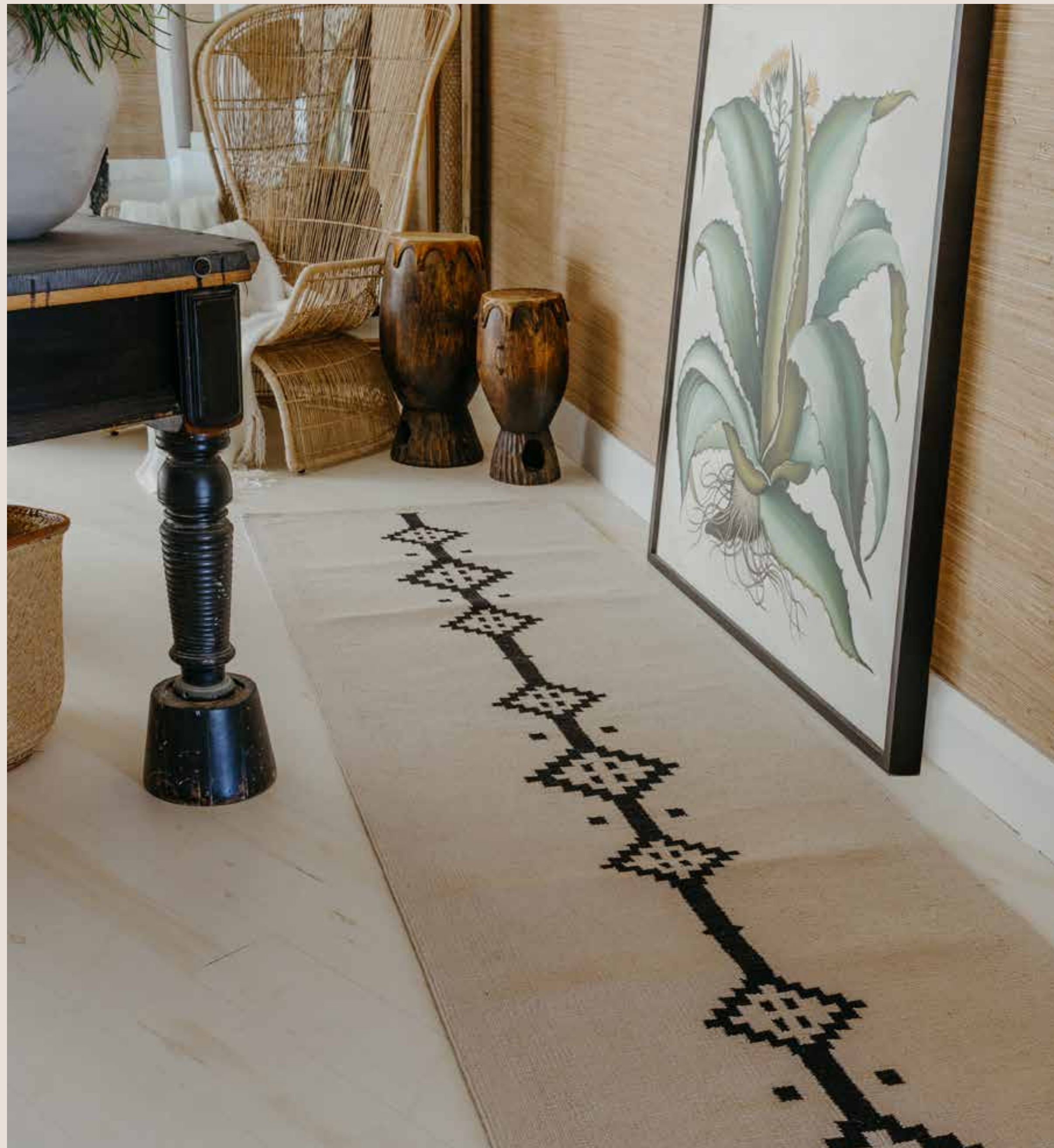


Quiver

Upgrade your space with this handwoven 100% wool rug. Inspired by the effortless simplicity and honest materiality of Scandinavian design, this statement piece will enhance any living area.

SIZE	PRICE
1.6 x 2.3	R6,201
2 x 3	R9,061
3 x 4	R15,914





Karoo

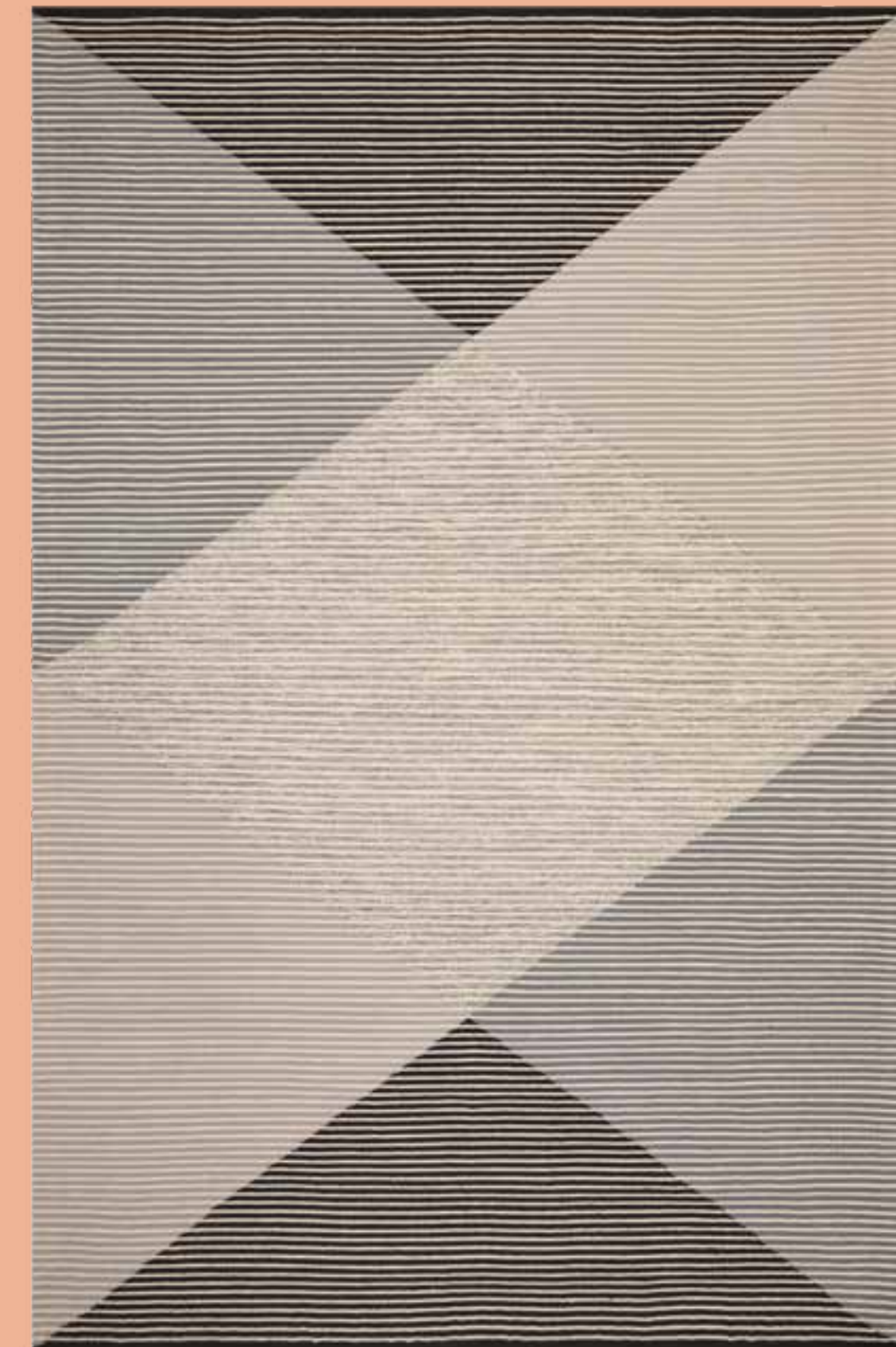
Add a touch of character to your living room, lounge, or dining room with this handwoven rug. Crafted in India using 100% cotton, this rug is a great choice for softening open areas, and for creating a complementary base for a coffee table.

SIZE	PRICE
1.6 x 2.3	R4,889
2 x 3	R6,877
3 x 4	R17,048

Dirty Brights: The Colour Collection

With vibrant splashes of colour brought to life with traditional craft techniques, the rugs in the Colour Collection are perfect for brightening up muted spaces and instilling feelings of optimism and joy. Dive into this collection to discover rugs designed for making a statement.





Thula

Toned down colours make this dhurrie simple and sophisticated.

SIZE	PRICE
2 x 3	R5,980
3 x 4	R11,959



Simba

A modern African vibey dhurrie, bright and cheerful.

SIZE	PRICE
2 x 3	R5,980
3 x 4	R11,959



Nyala

A fun, modern dhurrie where African design meets Scandi.

SIZE	PRICE
2 x 3	R5,980
3 x 4	R11,959



Themba

A statement dhurrie combining clean lines with happy brights.

SIZE	PRICE
2 x 3	R5,980
3 x 4	R11,959



Rafiki

A quirky, modern dhurrie, light and bright.

SIZE	PRICE
2 x 3	R5,980
3 x 4	R11,959



: COLOUR COLLECTION



Franki

A "modern classic" dhurrie, which could live in a farmhouse, beach house, kids room or kitchen!

SIZE	PRICE
2 x 3	R4,692
3 x 4	R9,384



Charles

Bold, cheerful stripes make this rug a fun addition to the dhurrie family.

SIZE	PRICE
2 x 3	R4,586
3 x 4	R9,169



Rupert

Classic in colour and design, perfect for a beach house, boys room or man cave.

SIZE	PRICE
2 x 3	R4,586
3 x 4	R9,169



Max

A modern dhurrie, light under foot and bold in design.

SIZE	PRICE
2 x 3	R6,194
3 x 4	R12,388



: COLOUR COLLECTION



Beatrix

The prettiest dhurrie of the lot, feminine and fun in one.

SIZE	PRICE
2 X 3	R5,014
3 X 4	R10,028

Savannah

The most beautiful combination of colours, patterns and fibres makes this such a statement piece

SIZE	PRICE
2 x 3	R9,628
3 x 4	R19,255
4 x 5	R32,090

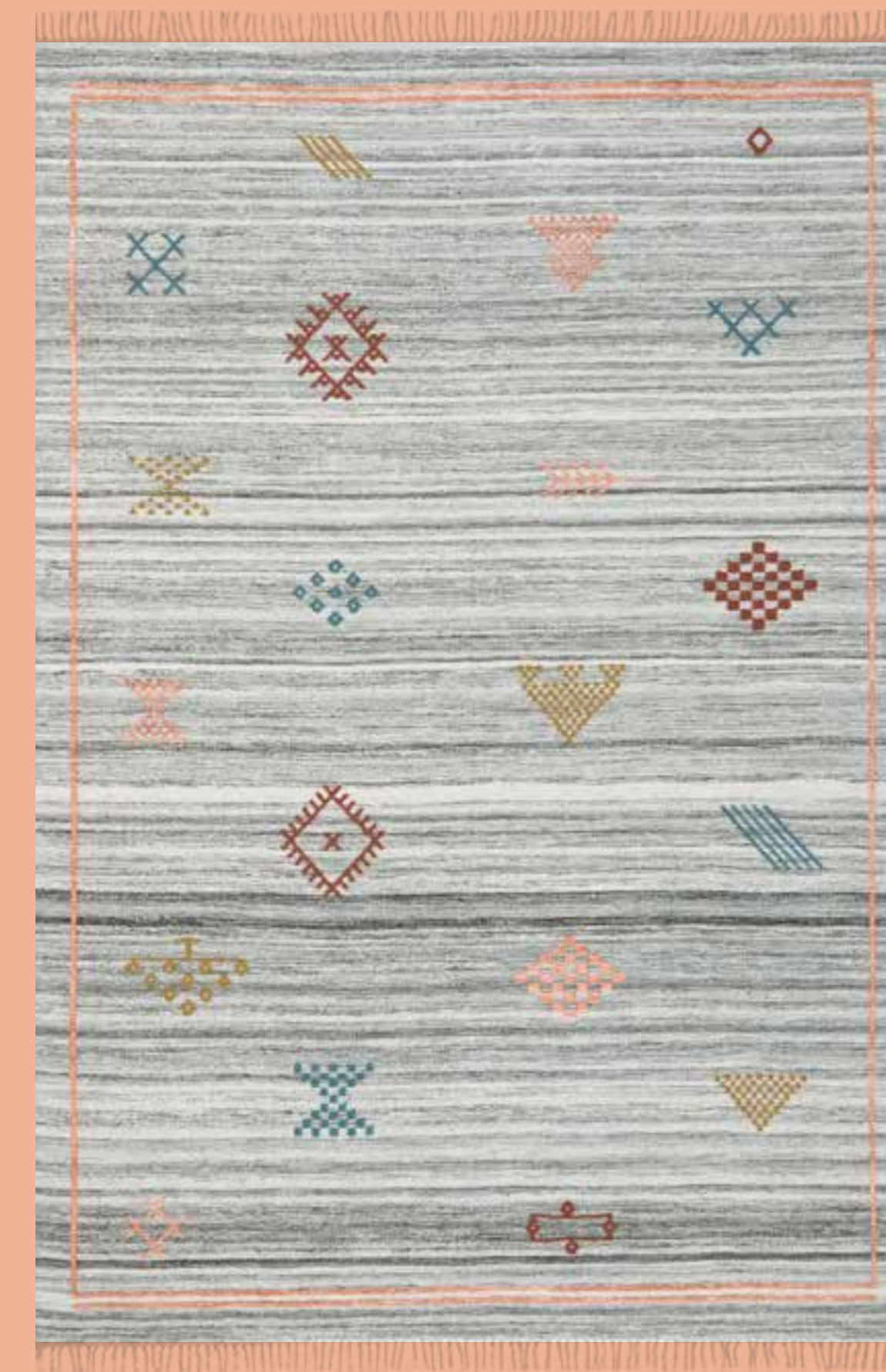


Fezzy

A bright and bold piece to make any room feel festive.

SIZE	PRICE
2 x 3	R8,583
3 x 4	R17,166
4 x 5	R28,609
1.6 x 2.3	R5,265





Mila

Inspired by the renowned design aesthetic of Scandinavia, this versatile rug uses an upbeat blend of pattern and colour to add youthful vibrance to a range of spaces. The wool-cotton blend gives it a soft, luxurious feel.

SIZE	PRICE
2 x 3	R8,619
3 x 4	R17,237



Dune: Black

Black is the new white, it can find a home anywhere it is so neutral. 100% Cotton.

SIZE	PRICE
1.6 x 2.3	R4,291
2 x 3	R5,905
3 x 4	R10,355



Dune: Citrus

Fun, bright and playful. This will add a pop of colour to any room. 100% Cotton.

SIZE	PRICE
1.6 x 2.3	R4,291
2 x 3	R5,905
3 x 4	R10,355



Dune: Wine

A resilient colour for those over the top playdates. 100% Cotton.

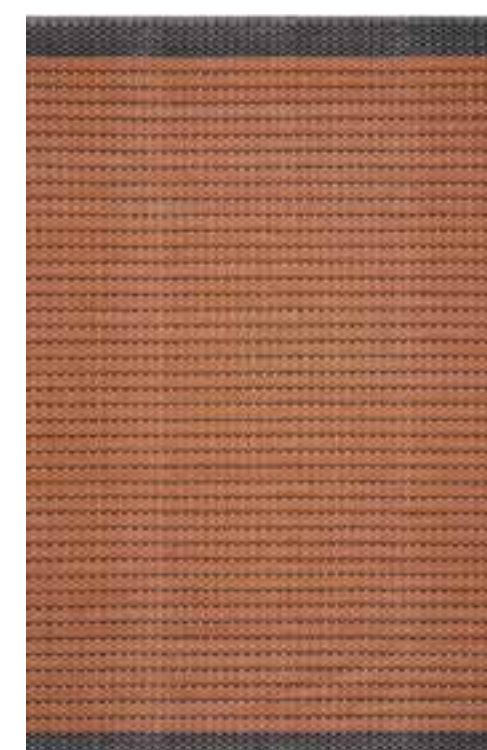
SIZE	PRICE
1.6 x 2.3	R4,291
2 x 3	R5,905
3 x 4	R10,355



Dune: Orange

A versatile hue perfect for all seasons. 100% Cotton.

SIZE	PRICE
1.6 x 2.3	R4,291
2 x 3	R5,905
3 x 4	R10,355



: COLOUR COLLECTION



Havana

With a pattern inspired by the lively energy of Havana City coupled with earthy tones, this versatile rug was designed to bring life to any space. Don't be surprised if you find yourself suddenly dancing as you walk across this statement piece.

SIZE	PRICE
0.8 x 3	R4,085
2 x 3	R10,210
3 x 4	R20,420
4 x 5	R35,744

Leapfrog

This rug was crafted to bring a touch of playfulness into a range of spaces. A hemp-cotton blend adds a rustic character to an otherwise quirky piece. This rug can be enjoyed in a range of spaces, including bedrooms, covered patios, living rooms, and dining rooms.

SIZE	PRICE
1.6 x 2.3	R7,156
3 x 4	R19,025
4 x 5	R30,911



Tag

Crafted with 100% cotton, this rug effuses a feeling of softness and warmth. This 100% cotton, handwoven rug creates a luxurious softness underfoot that can be enjoyed in a range of spaces, including bedrooms, living rooms, playrooms, and lounges.

SIZE	PRICE
0.8 x 3.5	R3,854
1.6 x 2.3	R5,722
2 x 3	R8,239
3 x 4	R16,516



Chopsticks

With designs that evoke imagery of rich African soils, this handwoven rug will make an excellent addition to playrooms, bedrooms, lounges, offices, and living rooms. Crafted with a wool-jute-cotton blend, this rug effuses a feeling of robust softness and warmth.

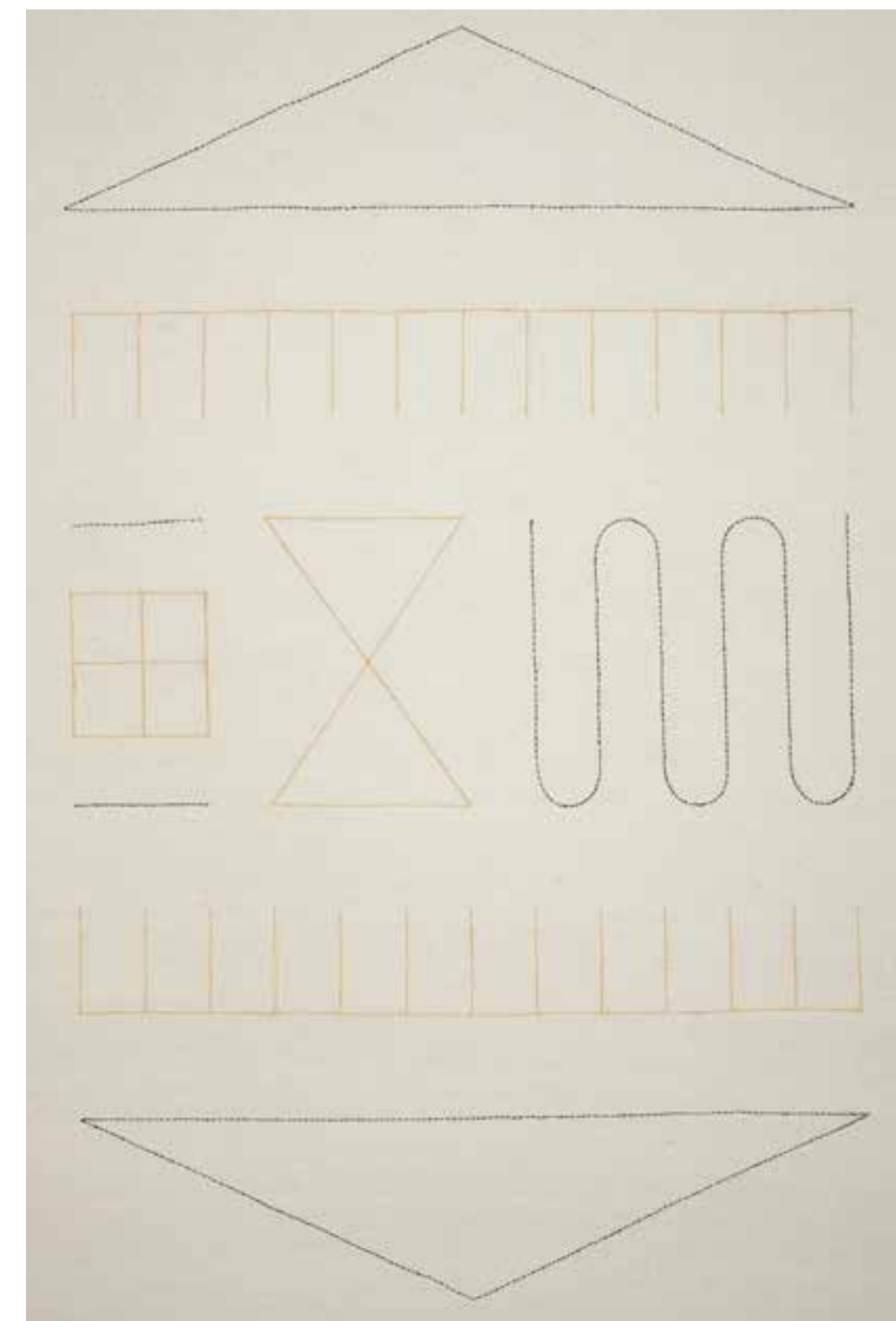
SIZE	PRICE
1.6 x 2.3	R6,521
2 x 3	R9,978
3 x 4	R19,955



Play

Featuring a striking hand-stitched geometric design on a muted background, this piece was designed to infuse your indoor space with a sense of youthful charm. Enjoy a luxurious softness underfoot with this rug's handwoven 100% cotton construction.

SIZE	PRICE
2 x 3	R6,967
3 x 4	R13,934





Moss

So light and fresh in colour, this rug will add vibrancy to any space. 60% Jute, 20% Cotton, 20% Latex. Handwoven flatweave.

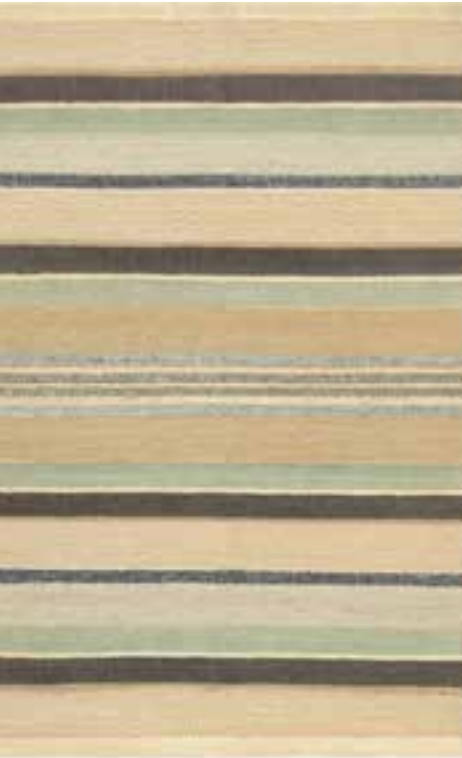
SIZE	PRICE
2 x 3	R8,106
3 x 4	R16,211
4 x 5	R28,727



Desert

Rich colours, bold lines in a desert and designed to bring warmth to any space. 45% Jute, 15% Wool, 20% Latex, 20% Cotton. Handwoven flatweave.

SIZE	PRICE
2 x 3	R11,135
3 x 4	R22,268
4 x 5	R38,824



Birch Green

Quirky and fun colour and pattern. 80% Cotton, 20% Acrylic.

SIZE	PRICE
1.6 x 2.3	R4,983
2 x 3	R7,033
3 x 4	R11,949
4 x 5	R23,134



10 Rug Rules

1: Colour

No two rugs are the same. Slight colour variations are common for handmade rugs, as dye lots may change over a period of time.

2: Odour

Odours are caused by dyes, yarns and shipping for long distances in sealed wrap. Most odours dissipate within a week once the rug is removed from the shipping wrap.

3: Shedding

All wool rugs will shed. Shedding will subside over time, depending on traffic and wear. It typically takes 20-25 vacuums, at a minimum, to curtail shedding. Some will shed for the lifetime of the rug – this is the nature of the fibre.

4: Fading

If exposed to sunlight, rug colours typically fade over time, even if they are fade resistant. The African UV is particularly harsh and so we cannot determine the time period before fading occurs.

5: Creases

If your rug has been rolled or folded for shipping, it may include creases. Creases should disappear within a week or two when the rug is laid out flat. Reverse rolling the rug overnight will help.

6: Rug Rotation

As a general rule, rugs of all materials and constructions should be rotated every 3-6 months to balance colour and evenly distribute regular foot traffic across the full surface area.

7: Sprouts

Loose fibres, or sprouts, are a normal part of the break-in process of handmade rugs. To remove sprouts, use a small pair of scissors to snip them off even with the pile. Do not pull the fibre out, as this can cause a deterioration of the backing.

8: Lift, Don't Drag

Woven rugs need a little extra love and care. To avoid 'pull's, take care when moving furniture over the rugs to avoid 'pulls' and lifts in the weave.

9: Soften the Blow

Protect your rug from sharp edges that puncture the rug surface by placing soft pads beneath the legs of table and chairs.

10: Anti-Slip Support

The use of an anti-slip mat beneath your rug will prevent it from moving around – less shifts, pulls and tugs will prolong its lifetime.

Cleaning Your Rug

How to Vacuum Your Rug

- Canister vacuums without beater bars are the optimal type of vacuum to use on rugs. Brooms and manual sweepers are also a gentle and effective way to clean rugs. Try to avoid frequent vacuuming to maintain all fibres as the suction can pull out the threads from the back of a rug and cause "sprouts." Use the handheld attachment to vacuum your area rug, whenever possible.
- Avoid running the vacuum over the fringes/tassels/ edges at the ends of the rug, as fraying may occur.
- Always vacuum from different angles to avoid strain in one particular direction.
- Our Jute rugs should not be vacuumed at all.

How to Clean Your Rug

- Clean spills immediately. Once a stain is set, it becomes much more difficult to clean. Never rub a spill, as this forces the spill deeper into the rug. Instead, blot the stain with a clean dish cloth or paper towel. Scrape off any food or debris asap.
- For wool rugs, use lukewarm water to remove any residual stain, as wool is more prone to bleeding and staining than synthetic fibres.
- Always use clean water to remove any residual cleaner, and dry towels to absorb any remaining moisture. We cannot guarantee that any spills or marks can be removed completely – this is at the owner's discretion to decide whether they would like to attempt cleaning or if they get the rug professionally cleaned.

Professional Cleaning For Your Handmade Rug

- Always use a professional area rug cleaning expert. Cleaning a handmade rug requires a process different than cleaning wall-to-wall carpet.

"Easy to Clean, Indoor/Outdoor rugs"

- With a dry cotton towel or white paper towel, blot out stain as much as possible.
- Scrape off any food or debris with a dull instrument.

- Mix a very small amount of dish soap with a cup of cold water. With a clean sponge and soap mix, remove remainder of the stain. Allow the area to dry.
- For all-over cleaning, spray with a mixture of handwash soap and water and rinse with clean water in a bucket. Make sure you remove all soap as this can create a mark.

Viscose Rugs

- Viscose rugs are constructed of wood cellulose fibres, which absorb moisture easily, therefore cleaning is not advised. If cleaning should become necessary, professional cleaning is preferable.
- Do not spot clean with water as cellulose fibres will turn yellow or discolour when wet and may stain after cleaning.
- Lighter colours are more susceptible to staining and large, solid areas will show staining more easily.
- Avoid placing viscose rugs in high-traffic areas to minimize the need for cleaning.

Leather/Hide Rugs

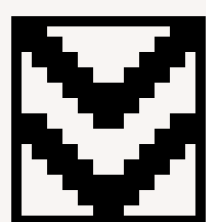
The beauty of a natural hide is, that it ages naturally – this includes inevitable hair loss over time*. Every unique piece will perform differently depending on the climate and the space it lives in. Hide rugs are best cleaned by gently shaking out dust, not vacuuming, to prevent further hair loss and spills may be gently dabbed with water and natural soap on a cloth.

*We will not accept returns on hides that lose hair over time as this is part of the natural aging process of the product.

Jutes

- Specifically see note about odours, sprouting and fading.
- Do not vacuum.

Please note that all the pricing in this catalogue is quoted excluding VAT, including delivery in SA.



VOKE

TO EVOKE A CULTURE
OF
RUG APPRECIATION

For any queries, please get in touch.
Emma Burton emma@vokerugs.co.za 084 400 1358
Helen Davies helen@vokerugs.co.za 083 297 0589

VOKE ©2021