



## Dodge Viper SRT-10 Battery Cover and Battery Tender Connector Mount

---

### **Thank you for your purchase!**

*Your business is appreciated and customer satisfaction is our top priority! Don't hesitate to contact us via email with any questions or feedback. Word of mouth is the best form of advertising so if you are satisfied please spread the word!*

**REMOVE BEFORE FLIGHT**

*Your battery tender connector mount comes with a "Remove Before Flight" tag. Please place this somewhere within view (ideally somewhere obvious, such as over the start button or on the steering wheel or shift lever) to remind you to unplug the battery tender prior to starting the engine on your Viper SRT-10.*

### **Disclaimer of Liability:**

*Doug Shelby Engineering assumes no liability expressed or implied for any damage caused by failure to unplug battery tender connector prior to operation of the vehicle. Doug Shelby Engineering assumes no liability expressed or implied for the improper installation or use of this product or its components. Doug Shelby Engineering is NOT responsible for any damage, consequential or otherwise for equipment failure after installation. Doug Shelby Engineering assumes no liability associated with the Permatex and Loctite products provided.*

### **Note – Permatex 22058:**

*The contacts on the battery tender connector and red/black quick disconnect connectors have been coated with Permatex 22058 Dielectric Tune-Up Grease to enhance performance and protect from debris and corrosion. Please be cautious and observe the following guidelines:*

*This product may cause eye and skin irritation; overexposure may cause eye and skin redness. If swallowed do not induce vomiting. Wash with soap and water if comes in contact with skin. Immediately flush eyes with water for 15 minutes if comes in contact with eyes. Please consult the Permatex website for more information.*

<http://www.permatex.com/products/product-categories/specialized-maintenance-repair/electrical-system-maintenance/permatex-dielectric-tune-up-grease-detail>

### **Note – Loctite Threadlocker Blue 242:**

*Loctite Threadlocker Blue 242 has been included with your purchase, please be cautious and observe the following guidelines:*

*This product may cause eye and skin irritation or respiratory tract irritation. If swallowed do not induce vomiting. Wash with soap and water if comes in contact with skin. Immediately flush eyes with lukewarm water for 15 minutes if comes in contact with eyes. Please consult the Loctite website for more information.*

[http://www.loctiteproducts.com/p/t\\_lkr\\_blue/technical-data/Loctite-Threadlocker-Blue-242.htm](http://www.loctiteproducts.com/p/t_lkr_blue/technical-data/Loctite-Threadlocker-Blue-242.htm)

### **Vehicle Modification:**

*Modification of your vehicle with the parts identified above may alter its stock performance; the buyer hereby expressly assumes all risks associated with any such modification.*

### **Disclaimer of Warranty:**

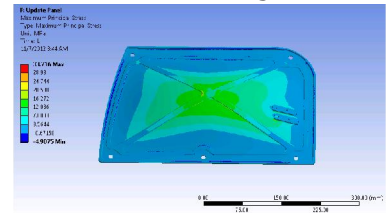
*Seller disclaims any warranty express or implied with respect to the parts sold hereby whether as to merchantability, fitness for particular purpose, or any other matter.*

## DSE SRT-10 CNC Aluminum Quick Release Battery Cover:

The OEM battery cover for the 2003-2010 Dodge Viper SRT-10 leaves much to be desired. Removing the 5 torx bolts without a power tool takes several minutes. Tightening the bolts leads to questions of "how tight?" Too loose and the panel doesn't close the gap to the outside leaving room for water dirt, and noise to enter the car. Too tight and the panel might be permanently creased. The steel panel is doesn't have a precise fit and will corrode if the finish is compromised (as will the torx bolts). Beyond the cosmetic and convenience issues with the stock panel, safety should be considered should immediate battery access is required. Torx drivers and bits aren't common and even with the right tool, removal can take several minutes.

Using motorsport and aircraft grade materials, DSE has developed a panel machined from T6 6061 aluminum and powder coated in low-gloss black to compliment the trunk pan and interior surfaces. Quick release stainless steel Phillips head fasteners are used for convenience and precision. The aluminum receptacles for these fasteners are threaded and attach with a nut through the OEM trunk pan holes without modification. Converting to and from OEM can be done in minutes.

An upgrade from the OEM version in every way; the DSE design has been analyzed using a Finite Element Analysis (FEA) process and is stronger, more rigid, and lighter than the stock panel.



**FEA ANALYSIS OF DSE PANEL**

## DSE SRT-10 Battery Tender Connector / Bracket:

The DSE battery Tender connector is the ultimate in convenience and function for those wanting to maintain their battery on the Viper SRT-10. The connector mounts to the bottom of the SRT-10 Battery Cover is accessible directly through the rear bumper vents meaning you can plug the battery charger in directly without opening the hood, hatch, or window to charge the battery. The bracket is machined from 6061-T6 aluminum and contains all stainless steel hardware. The finish is a low gloss black powder coat meaning the connector is barely visible from the rear of the car. Even with this option, the cover is 0.2 lbs lighter than OEM.

## Specifications:

### DSE SRT-10 CNC Aluminum Battery Cover:

Composition: Panel - 6061-T6 Aluminum  
Hardware - Stainless Steel / Aluminum  
Phillips ¼ turn quick release  
Foam Seal - Oil Resistant / Fire Retardant  
Rated from -40 – 200 °C  
Weight: 1.5 lbs (0.5 lbs lighter than stock configuration)  
Finish: Low-Gloss Black Powder Coat

### SRT-10 Battery Tender Connector / Bracket:

Composition: Bracket - 6061-T6 Aluminum and Stainless Steel  
Hardware - Black Oxide Coated Stainless Steel  
Weight: 0.35 lbs including wiring and connectors  
Finish: Low-Gloss Black Powder Coat  
Electrical: SAE 2 Pin (mates with Battery Tender, adapters extra)  
7.5A Fuse, quick disconnect connectors



**DSE-VP-BA-001 Installed**



**Installed Panel and Connector as Viewed From Rear**

## Ordering Information:

SRT-10 CNC Aluminum Battery Cover	P/N: DSE-VP-BA-001	\$200.00
SRT-10 Battery Tender Connector / Bracket	P/N: DSE-VP-BA-002	\$75.00

<http://dougshelbyengineering.com/Viper.html>

## Installation Instructions:

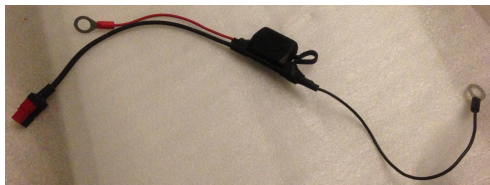
### DSE SRT-10 Battery Cover:

- Remove OEM cover by loosening the 5 torx bolts.
- Remove OEM nut plates using a small standard screwdriver to lift the tabs and sliding them off of the base.
- Place each threaded receptacle in the 5 battery panel holes.
- Apply loctite 242 (included) to the threads of each nut just before hand tightening on the receptacle.
- *Note: The receptacles should be tight enough not to spin but be able to move slightly within the hole for alignment.*
- Install DSE battery cover in place. The fasteners should drop into the receptacles.
- Tighten the quick release fasteners to ensure fit and proper alignment of receptacles. Using a Phillips screwdriver press each spring loaded head down flush with the panel and turn ¼ turn clockwise.
- The receptacles are now properly aligned in trunk pan. Release the fasteners by pressing down on each one and turning ¼ counter clockwise with a Phillips screwdriver. Remove the battery cover.
- Tighten receptacle nuts by using a 9/16" wrench or socket while using your thumb to prevent the receptacle it from spinning within the hole. If necessary use a standard screwdriver to prevent the receptacle from spinning.
- Install DSE Battery Cover as before.
- If return to OEM is desired, remove receptacles and reinstall OEM nut clips.



### DSE SRT-10 Battery Tender Connector / Bracket: (Optional; Requires Battery Cover)

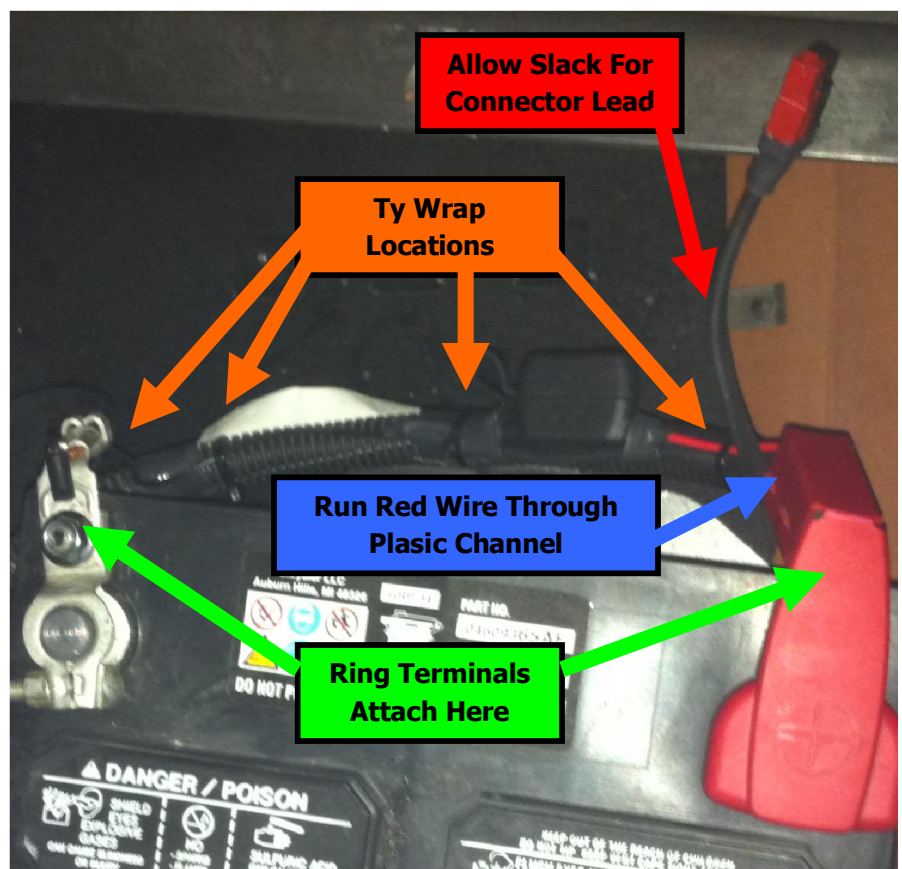
- Remove the red plastic insulator from the positive battery terminal.
  - Install car harness on terminals located on the OEM battery harness.
  - Use cable ties to secure the charger harness to the OEM harness as shown.
  - Leave enough slack to allow the harness to be plugged / unplugged from the panel with ease. ***Connector / Bracket***
- When installing the battery cover w/connector, plug in red/black connections between the connector and car harness before tightening the fasteners on the panel. There should be enough slack in the wiring to allow for this to be done. Lower panel into trunk pan hole, plug in connector and tighten everything down.
- For charging simply plug the battery tender 2-Pin SAE connector directly into the DSE panel mounted connector.



***Car Wiring Harness***



***Underside of DSE-VP-BA-001***



***Car Wiring Harness Installation***