



2013-2017 Gen V Viper OEM Seat Lowering Bracket

Overview:

The seat brackets provide a bolt in solution for lowering the factory seats to the floor by removing the slider from the seat. The new mounting position is approximately 2" lower in height.

Compatibility:

These brackets will fit any 2013-2017 Viper.

Construction:

The brackets are manufactured from type III hard anodized .250" aluminum with 12.9 grade hardware for maximum strength.

Installation hardware is included with the kit.

Ordering Information:

<http://www.dougshelbyengineering.com>

Gen V Dodge Viper OEM Seat Lowering Brackets



GEN V OEM SEAT LOWERING BRACKET

Installation Guide:

Seat Removal –

- *It is helpful to note the seat position relative to the rear stud or front bolt before removing the seat to reduce trial and error time later. Use tape to mark the position and note the distance to one of these floor mounting points.*
- *Tape off lower trim pieces to protect them from damage during seat removal.*
- *Once unbolted the seat can be removed by leaning the top inward toward the center of the car and lifting the bottom of the seat. Adjust the recline for easier removal and center fore/aft on the slider.*
- *Do not power the car with the seats removed to avoid codes being set.*

1. Before proceeding with the following repair procedure, review all warnings and cautions, ([Refer to 23 - Body/Seats - Warning](#)).

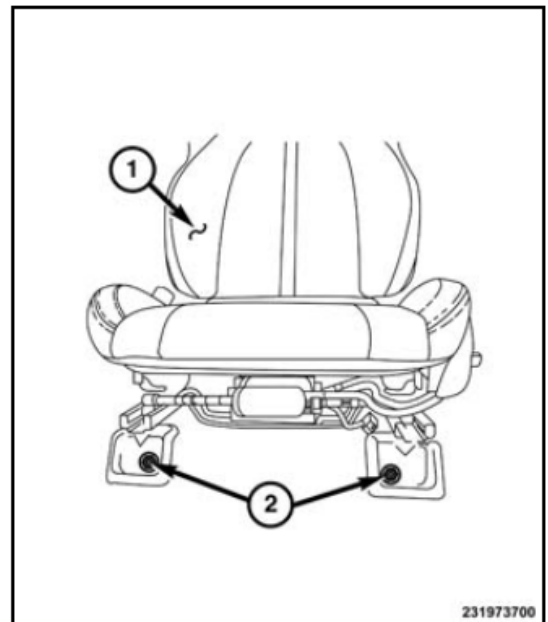
2. Open deck lid.

3. Position the seat to access the front and rear fasteners.

4. Disconnect and isolate the battery negative cable.

WARNING: Wait two minutes for the system reserve capacitor to discharge before servicing any airbag components. Failure to do this may result in serious or fatal injury.

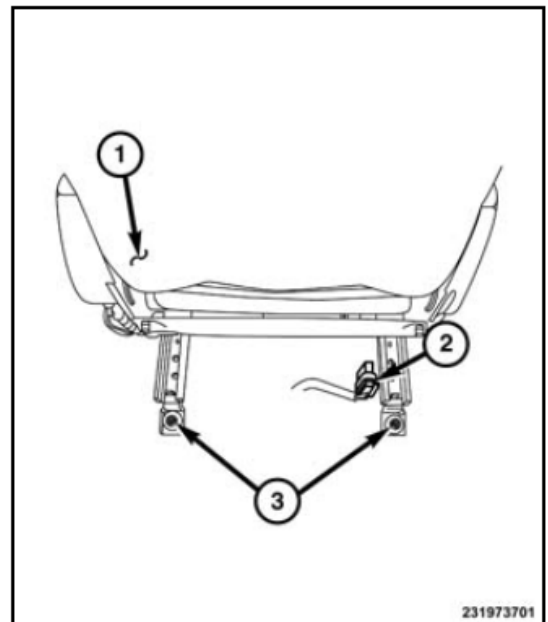
5. Remove the bolts (2) from the front of the seat (1).



6. Remove the nuts (3) from the rear of the seat (1).

7. Disconnect the seat electrical connector (2) located at the rear underside of seat cushion.

8. Remove seat from vehicle.



Warning: Only use Class 12.9 or Grade 8 bolts for seat installation to ensure maximum strength and safety.

- *OEM Seat Modification*

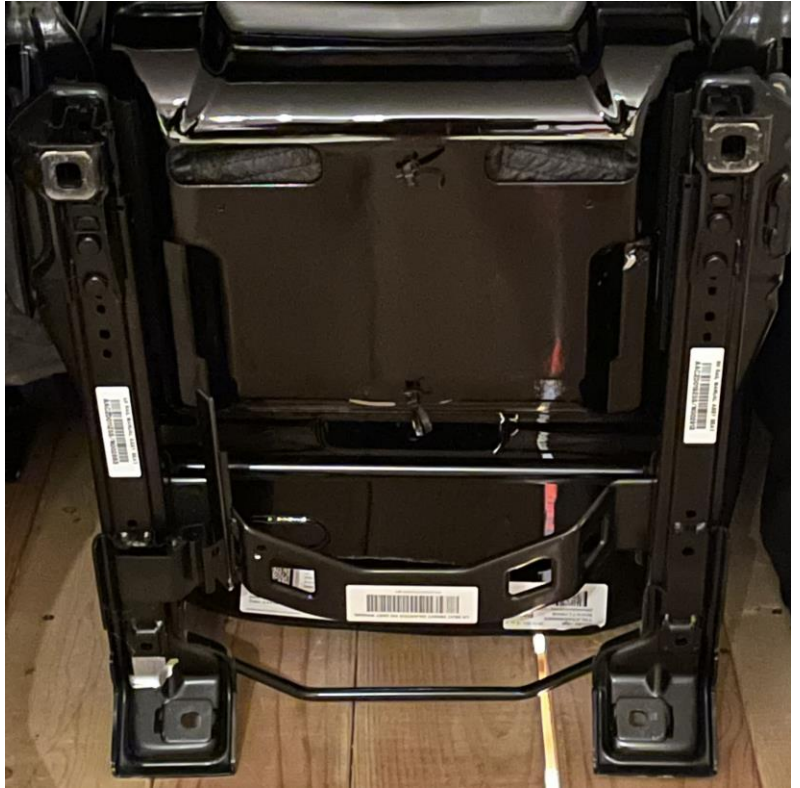
- o *The OEM slider and cross bracket must be removed from the OEM seat.*
- o *Unbolt the slider rails from the seat (3x M8 Nuts on Each Side).*
- o *Drill out the cross bar rivets and remove from the seat (2 Rivets Per Side).*
- o *Remove the seat belt buckle and associated wiring harness from the seat.*

- *In Car Prep (Drivers Side)*

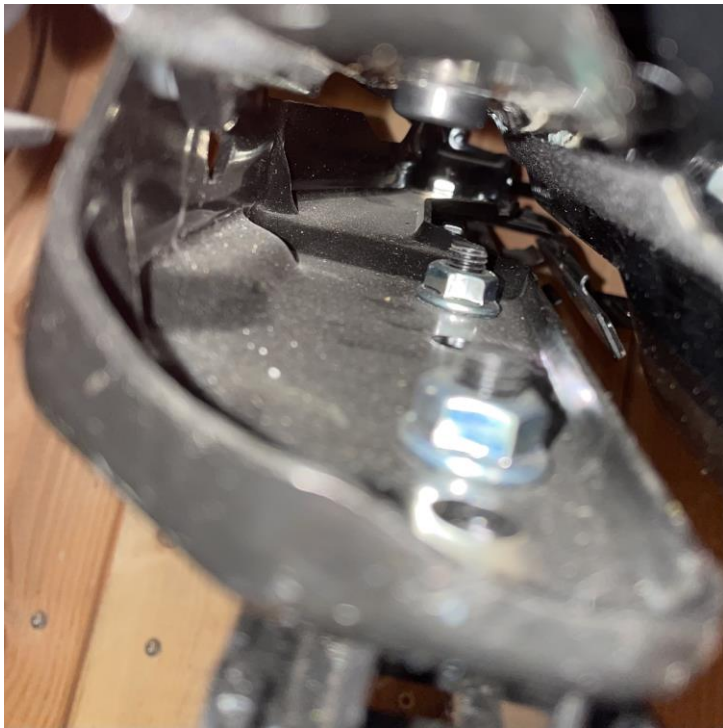
- o *Install the seat belt buckle on the existing trans tunnel threaded insert (behind carpet) as shown. Use the photo to help locate this OEM threaded insert.*
- o *Pull the wiring harness out from under the carpet to provide more clearance for the seat to sit on the floor. (see photo on next page)*
- o *Lay the harness out of the way for maximum floor clearance for the seat and secure as possible.*
- o *Note the seat slider sensor is no longer needed as it is meant to indicate when the seat is in the forward-most position. It can be secured away from ferrous metal as to not cause it to trigger.*



Driver Side Belt Buckle Installed and Wiring Harness Moved



OEM Seat Before Removal of Slider Rails and Crossbar



3 Nuts Hold the Slider Rails On Each Side



2 Rivets Hold the Crossbar On Each Side

Seat Setup

- Install the seat onto the bracket outside of the car.
 - If you observed seat position prior to removal from the car relative to the front/rear floor mounting holes you can use this as a starting point for seat position on the bracket.
 - Pick a hard mount point of the 4 available positions. Use the included M8 flat head screws and nuts to secure the seat (3x per side). If needed the OEM seat can be drilled to allow additional positions. If you are confident in seat position use Loctite to install these now and torque to 27 ft-lb (37 NM), otherwise just hand tighten.
 - Install the forward carpet spacers using the flat head 6-32 screws. If you are confident in seat position use Loctite to install these.
 - Test fit seat in the car. If position is not suitable remove seat/bracket and adjust seat position.
 - Repeat adjustment steps above and test fit until desired setup is achieved and then tighten hardware as noted below.
 - Remove each bolt and apply Loctite and tighten the M8 hardware to 27 ft-lb (37 NM).
 - Install the forward carpet spacers using Loctite. The Rear carpet spacers should already be installed.
 - Before final installation, connect the electrical connectors and battery and power the car (ignition position) to confirm no codes are set.



OEM Seat Installed On Lowering Bracket

Final Seat / Bracket Installation

1. Before proceeding with the following repair procedure, review all warnings and cautions, ([Refer to 23 - Body/Seats - Warning](#)).

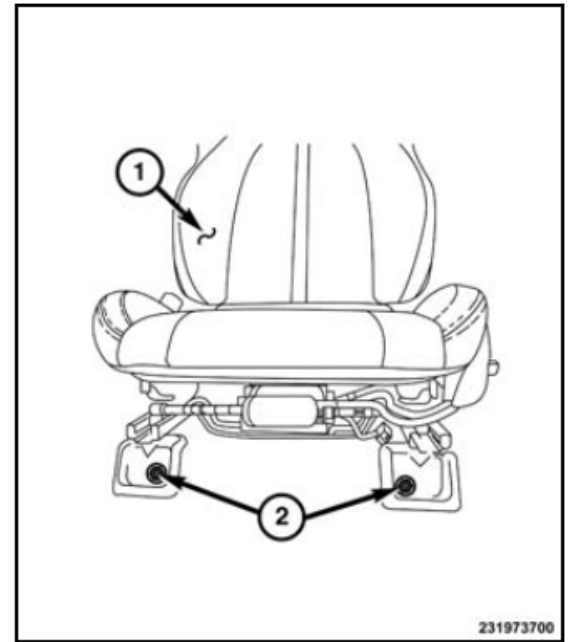
2. Place the seat assembly in the vehicle.

3. Loosely install the front seat attaching bolts and nuts.

NOTE: The front BOLTS must be torqued to the specified torque prior to the rear NUTS being secured.

4. Tighten inboard front seat front bolt to 43 N·m (32 ft. lbs.) torque.

5. Tighten outboard front seat front bolt to 43 N·m (32 ft. lbs.) torque.



6. Tighten the inboard rear nut to 37 N·m (27 ft. lbs.) torque.

7. Tighten the outboard rear nut to 37 N·m (27 ft. lbs.) torque.

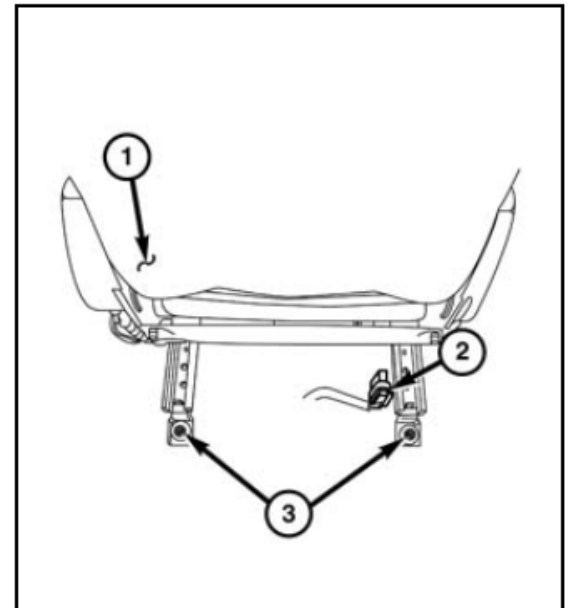
8. Connect the electrical connector (2).

WARNING: Do not connect the battery negative cable . Serious or fatal injury may result if the system test is not performed first.

9. Perform supplemental restraint system test, ([Refer to 10 - Restraints/Diagnosis and Testing](#)).

10. Place battery access cover into place and install four bolts.

11. Close deck lid.



Inspection and Maintenance:

- Periodically inspect the bracket and hardware to ensure nothing is loose or damaged.

Thank you for your purchase!

Your business is appreciated and customer satisfaction is our top priority! Don't hesitate to contact us via email with any questions or feedback. Word of mouth is the best form of advertising so if you are satisfied please spread the word!

Disclaimer of Liability:

Doug Shelby Engineering assumes no liability expressed or implied for the improper installation or use of this product or its components. Doug Shelby Engineering is NOT responsible for any damage, consequential or otherwise for equipment failure after installation.

Vehicle Modification:

Modification of your vehicle with the parts identified above may alter its stock performance; the buyer hereby expressly assumes all risks associated with any such modification.

Disclaimer of Warranty:

Seller disclaims any warranty express or implied with respect to the parts sold hereby whether as to merchantability, fitness for particular purpose, or any other matter.



OEM Seat Installed On Lowering Bracket