



## 1997-2017 Dodge Viper Aluminum Front Lower Shock Mount

### Overview:

This is a direct bolt on replacement for the factory front lower shock mount. Aluminum construction saves unsprung weight and will not corrode.

### Compatibility:

1997-2017 Viper.

### Construction:

Type III anodized T6-6061 Aluminum.

### Weight:

Saves 0.33 lbs per mount.

### Ordering Information:

<http://www.dougshelbyengineering.com/>

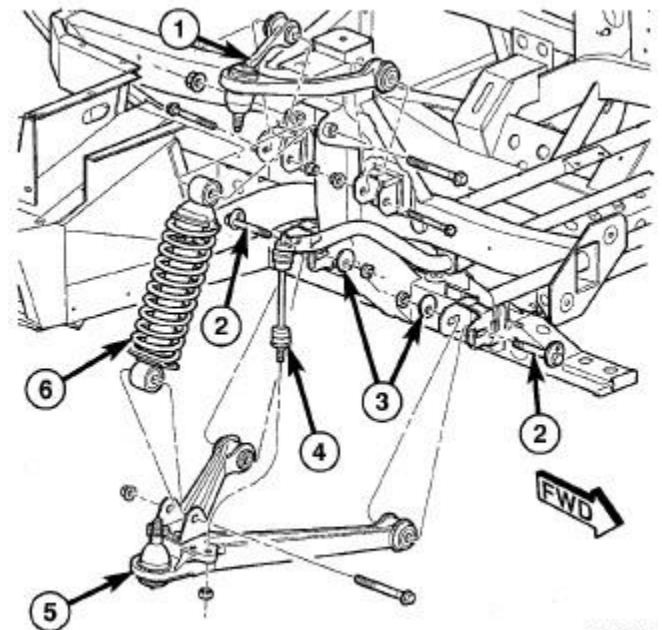


***Front Lower Shock Mount Set***

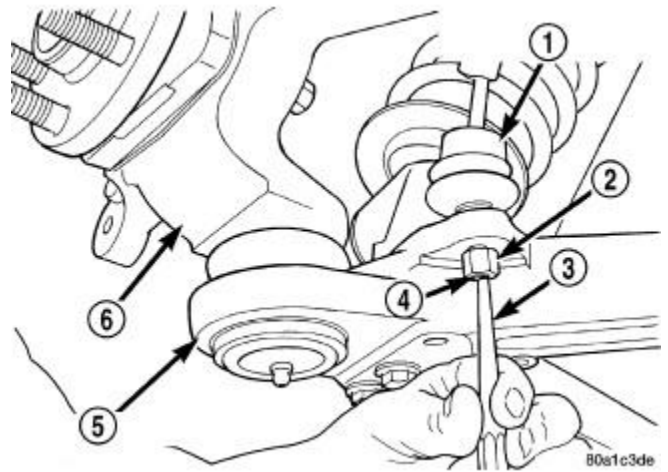
### Installation Guide:

#### OEM FLSM Removal

1. If desired check vehicle ride height if return to this precise level is necessary. Removal of the shocks may have a marginal effect on vehicle ride height depending on the hole tolerances.
2. Raise vehicle.
3. Remove wheel and tire assembly.
4. Loosen, but do not remove, nut attaching stabilizer bar link (4) to lower control arm (5). Back off and position nut at end of link stud.



**CAUTION:** The nut must be positioned at the end of the stabilizer bar link stud to help prevent the end of the stud from being damaged when separating it from the lower control arm.



5. Place center punch (3) in dimple on end of stabilizer bar link stud (4). Strike center punch with hammer, releasing link stud from lower control arm. Remove nut (2).

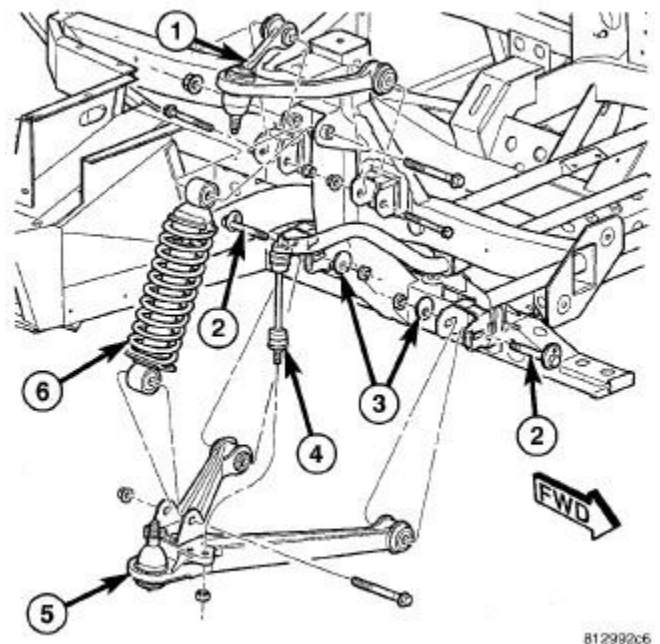
6. Remove bolt and nut attaching shock assembly (6) to bracket on lower control arm (5).

7. Remove bolt and nut attaching shock assembly (6) to bracket on frame.

8. Using a pry bar, carefully push down on upper control arm far enough to remove top of shock assembly from frame bracket.

9. Remove shock assembly from vehicle, out through center of upper control arm (1)

10. Note the specific holes the front lower shock mount is installed in. Remove the front lower shock mount by removing the 3 nuts/bolts that attach it to the lower control arm.



### FLSM Installation

1. Install new front lower shock mount in the same holes as the old one was removed from. Tighten the 3 nuts/bolts to 50lb/ft.
2. Install shock assembly (6) down through center of upper control arm (1).
3. Install shock assembly in mounting bracket on lower control arm (5). Install bolt and nut as shown. **Do not tighten shock mounting bolt at this time.**
4. Using a pry bar, carefully push down on upper control arm far enough to install top of shock assembly into frame bracket.
5. Install shock assembly into frame bracket and install bolt and nut. **Do not tighten mounting bolt at this time.**
6. Install stabilizer bar link (4) into mounting hole on lower control arm. Install stabilizer bar link nut. **Do not tighten at this time..**
7. Install wheel and tire assembly.
8. Lower vehicle.
9. Measure vehicle ride height and adjust per the service manual instruction if desired/necessary.

**Thank you for your purchase!**

*Your business is appreciated! Customer satisfaction is our top priority! Don't hesitate to contact us with any questions or feedback. Word of mouth is the best form of advertising so if you are satisfied please spread the word!*

**Disclaimer of Liability:**

*Doug Shelby Engineering assumes no liability expressed or implied for the improper installation or use of this product or its components.*

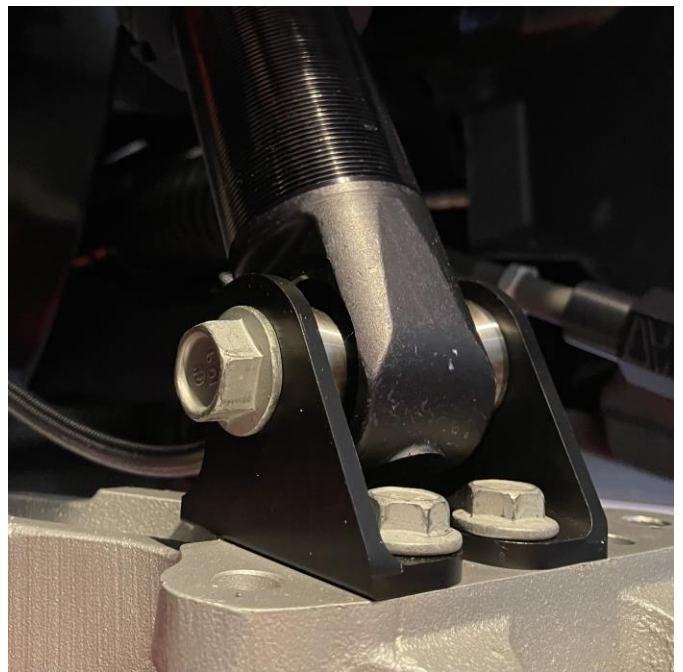
*Doug Shelby Engineering is NOT responsible for any damage, consequential or otherwise for equipment failure after installation.*

**Vehicle Modification:**

*Modification of your vehicle with the parts identified above may alter its stock performance; the buyer hereby expressly assumes all risks associated with any such modification.*

**Disclaimer of Warranty:**

*Seller disclaims any warranty express or implied with respect to the parts sold hereby whether as to merchantability, fitness for particular purpose, or any other matter.*



**Front Lower Shock Mount Installed**