



7 in Suzuki M1 LED Headlight Adapter Install Manual

Install Information:

For specific bike fitment and models that this adapter will fit please check out our website www.NextLvlinnovation.com
There is also an install video to help with the installation.

Install Time: 30-40 Mins

Install Difficulty: Easy-Moderate

Tools Needed :

M 2 Allen Wrench

Phillips Head Screwdriver

Small tip Flat or Phillips Head (Adjustment)

Part Descriptions:

This adapter will fit most 7" aftermarket LED headlights in the stock bezel and bucket of the Suzuki C50 and C90 motorcycles (Other models are possible, check fitment guide on our website). It has vertical adjustment using the stock halogen hardware/method.

Key Ring: Mates with the LED headlight's key and is the base part.

Clamp Ring: Clamps the LED headlight against the Key Ring.

Side Mounts: Attachment points between the LED adapter and the motorcycle bezel.

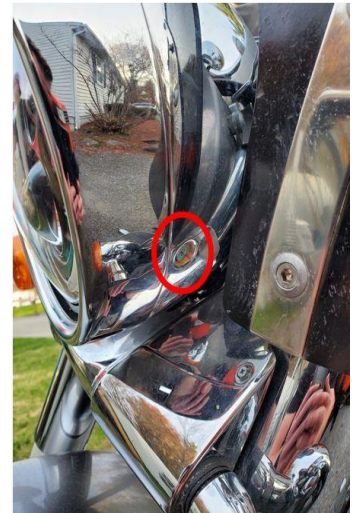
Adjustment Piece: For headlight angle adjustment and stability/vibration damping.

Adjustment Wedge: Locks the stock square nylon nut in place on the Adjustment piece.

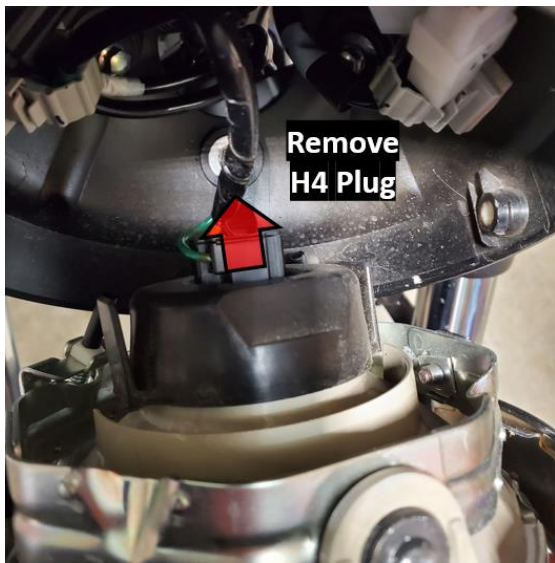
Uninstall of Stock Halogen Light:



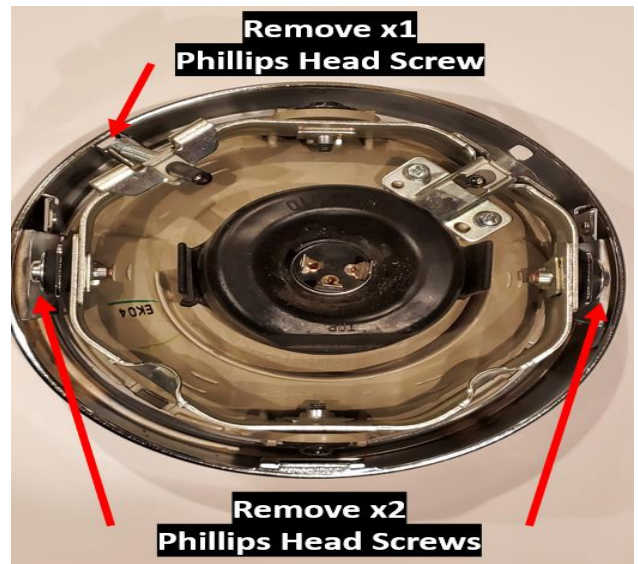
Step 1 (Optional): Remove any cowl or fairing that may get in the way of the headlight bucket screws in step 2. Hardware may vary.



Step 2: Next remove 2 Phillips Head screws from the headlight housing connecting the bezel/headlight assembly to the headlight bucket. Located left and right of the housing.



Step 3: Remove the headlight assembly by slightly twisting and pulling on the bezel. Then unplug the H4 plug.

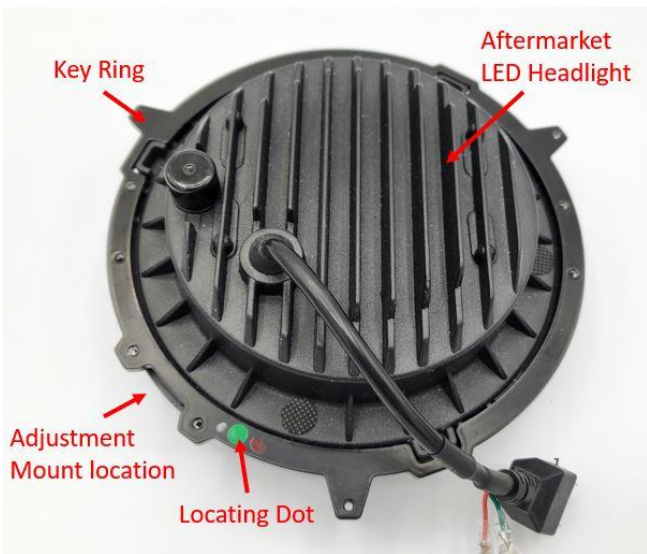


Step 4: Remove the adjustment bracket by removing two Philips head screws. Remove one of the adjustment screws from the bezel. Keep the screws and T-Nuts for later use. Keep the grommets in the bezel mounts.



Loctite Application: Use one drop about 1 to 2 threads up from the bottom of each screw supplied with the adapter right before installing. (Pictures to the left). Sets in 10 Mins, cures in 24 Hours.

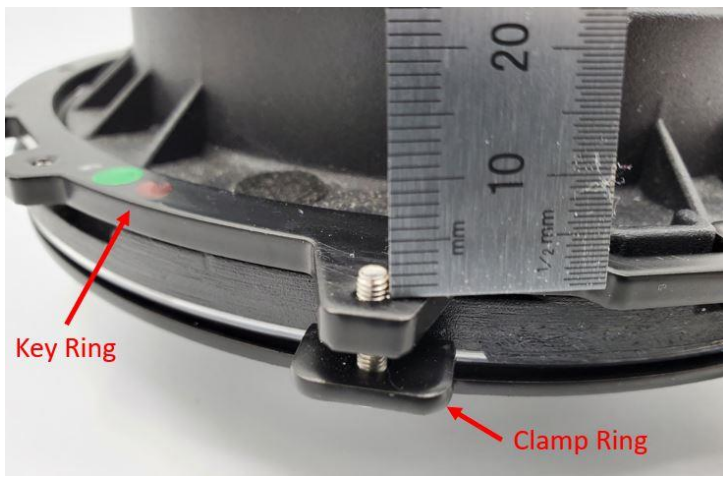
Install LED Headlight:



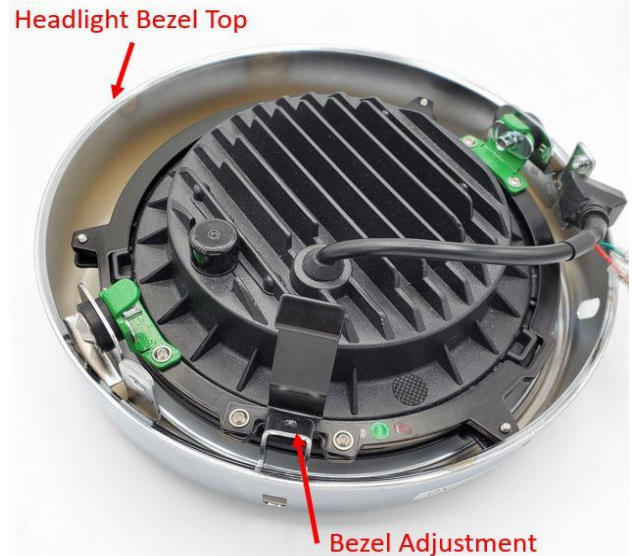
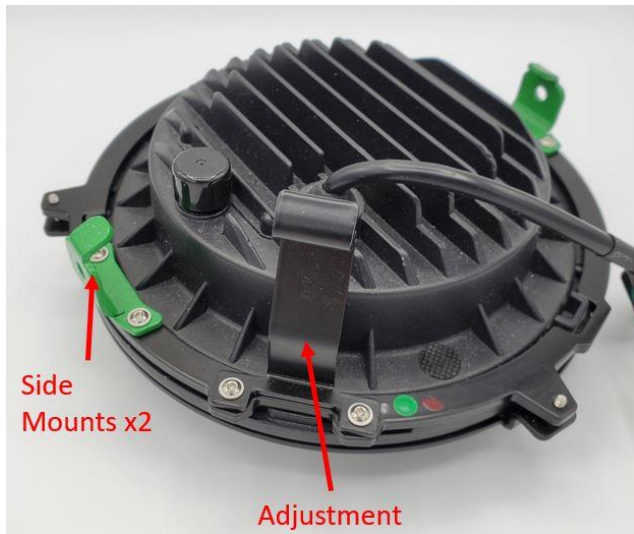
Step 1: Take the Key Ring and align the three keyways and keys of the LED headlight. The LED headlight should be facing up and the adjustment mount location to be positioned to the bottom left. A colored locating dot should be visible.



Step 2: Apply the 4 provided EPDM gasket cutouts to the bottom side (tabs facing up) of the clamp ring in the approximate locations described above. This will cushion the LED headlight in the setup and reduce vibration. When applying use pressure for 20 seconds. This is an optional step but will reduce shifting of the light.



Step 3: Holding the light sideways put the clamp ring on the front of the headlight with the key ring still flush to the back of the light. Align the key and clamp ring holes (x3). One at a time take an M3 x 12 screw and thread it through the tapped key ring hole (Loosely). Do this to the other two holes. Now tighten each screw while keeping each side relatively equal. Tighten until the headlight is secure (screw roughly 2mm exposed). Overtightening will bow the clamp ring providing less grip to the light. Test for slack.



Step 4: Add the side mounts to the key ring using the supplied M3 x 5 screws. Do this for both side mounts. Both side mounts are identical. Now add the Adjustment piece as shown using the M3 x 5 screws.

Step 5: Slide the headlight assembly in the Suzuki bezel from the back side (top to bottom). Line up the side mount holes with the bezel mounts. Use the existing hardware from the stock headlight. Have the T-Nuts facing each other. You can use Blue Thread Lock on the

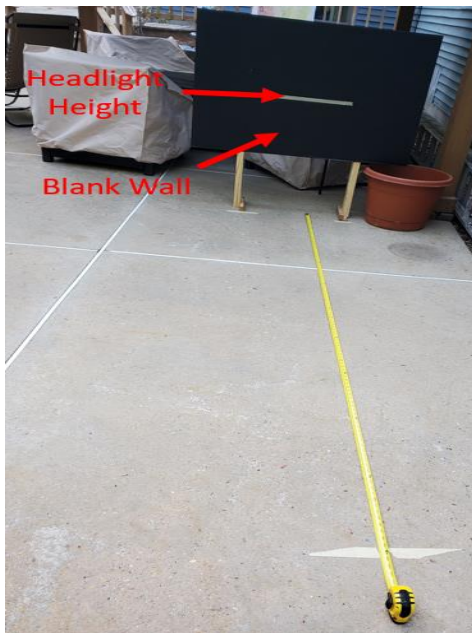


Step 6: Now add the stock adjustment spring between the bezel adjustment mount and the Adjustment piece. Try to align the spring with both holes. *Take caution, the spring may launch under load.*
Step 7: Take the stock M4 long adjustment screw and guide it through the bezel hole and the bezel adjustment hole. Then pass it through the spring. Do not pass it all the way through the adjustment piece yet.

Step 8: Add the M2.5 counterbore screw to the Adjustment Piece. Next align the stock Nylock Nut with the Adjustment Piece hole. The M2.5 Nut Wedge will keep the Nylock Nut from rotating. You may need to hold the Nylock nut in place until a few threads have been inserted.

Step 9: Using a skinny flat head or Philips head screwdriver, thread the M4 screw in the Nylon nut. Screw until you feel that the headlight assembly looks level within the bezel. Be sure that the key ring is not hung up on the bezel adjustment mount.

Adjustment:



Step 11: Install the headlight in your bike. See the beginning steps and go in reverse. Take a moment and look at your new LED headlight assembly! Doesn't it look good?



Adjustment: After the headlight is installed on your bike position the bike 10 feet from a blank wall. Measure from the ground the height of the headlight (to center) with the rider sitting on it. Now mark your wall with this dimension. Adjust the headlight until the low beam pattern is equally spaced over the line on the wall.

Congrats you are ready to ride!

Maintenance:

All hardware should be checked periodically (1000 miles). If riding on rougher terrain check more often. Hardware should be inspected and retightened. Contact Info@NextLvLInnovation.com or visit us at NextLvlinnovation.com for more information.

Warning:

Next Level Innovation LLC (NLI) is not associated with Suzuki or other third party vendors. NLI is not responsible for the misuse or void of warranty this may cause to your motorcycle. Use at your own risk. Any modifications made to this product ("7in-LED-ADT-01-2") will void the warranty.