

## PRODUCT SHEET

# Area 8c

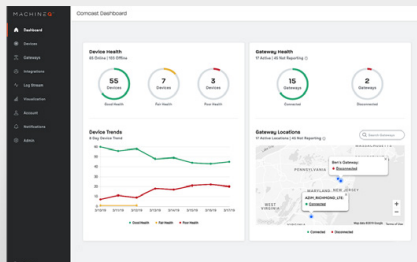
8-CHANNEL LoRa® INDOOR GATEWAY



The Area 8c provides optimal coverage and reliable connectivity for small and large scale, indoor deployments.

LTE CELLULAR/ETHERNET\*

\$300.00



## MachineQ Enterprise Platform License - \$49.<sup>95</sup>/month

Utilize MQcentral and our robust APIs to manage critical over-the-air-updates and check the general health of your deployments.

\* Purchase cell connectivity for \$9.95/month

## Easy, Flexible and Cost-Efficient

Built and tested in-house by our LoRaWAN® experts, the Area 8c can process millions of transmissions per day and support up to 10,000 devices. The Area 8c offers superior long-range capacity and deep propagation to hard-to-reach places.

Activation is made simple through the MachineQ mobile app. The unit can be mounted on walls or tables and includes an optional external antenna to optimize range.

## Features & Benefits

- RF optimized and certified for best-in-class propagation reducing hardware expenditure
- Supports up to 10,000 devices ensuring all sensor data is received and processed
- Edge enablement: ability to decode LoRa payloads locally and transmit directly from the Area 8c
- Automated failover logic and payload caching help to reduce loss of data due to outages
- End-to-End Encryption - encryption from sensor to gateway, plus sensor payloads and wireless metadata

## Partner with us

To learn more, contact us at [Info@MachineQ.com](mailto:Info@MachineQ.com) or visit [MachineQ.com](https://MachineQ.com).

© 2020 MachineQ™ All Rights Reserved.

## PRODUCT SHEET

# Area 80

8-CHANNEL LoRa® INDOOR GATEWAY

## TECHNICAL SPECS

### LoRa TX POWER

+27 dBm

### POWER

AC/DC 100-240VAC 50/60Hz  
to 12VDC/2A

### LEDS AND BUTTONS

4 LEDs: Power, Ethernet,  
Wireless Backhaul, LoRa

### ANTENNAS

LoRa: Internal & External

### WHATS IN THE BOX

Gateway, AC Adapter,  
RJ45 Ethernet Cable,  
External Antenna, Wall  
Mounting Hardware

### LoRa

US 915 Mhz

### LoRa RECEIVE SENSITIVITY

Typical -133 dBm @ SF12, 125KHz

### CHANNELS

8

### DUPLEX

Half

### INSTALLATION LOCATIONS

Indoor only  
Operating: 0 ~ 40°C  
Storage: -10 ~ 70°C

### MEMORY

1024Mbit RAM

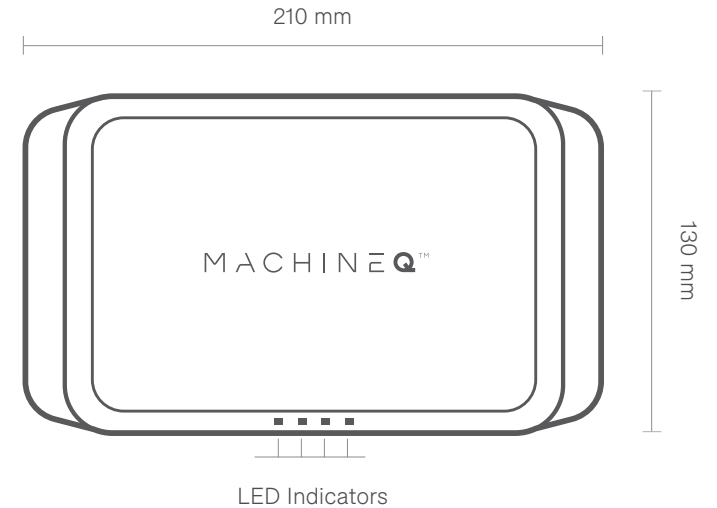
### MODEL NUMBERS

LTE Cellular/Ethernet: HXQX1APOS  
Ethernet Backhaul: HXQX1AM0S

## HARDWARE SPECS

### DIMENSIONS

210 mm x 130 mm x 33 mm



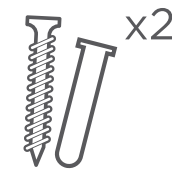
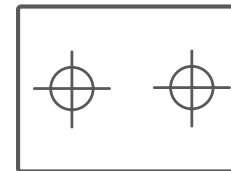
A-C Adapter



Antenna



Ethernet



Wall  
Mounting  
Hardware

For EU868, AS923 and other International Deployments, please contact  
[info@machineq.com](mailto:info@machineq.com) for more details.