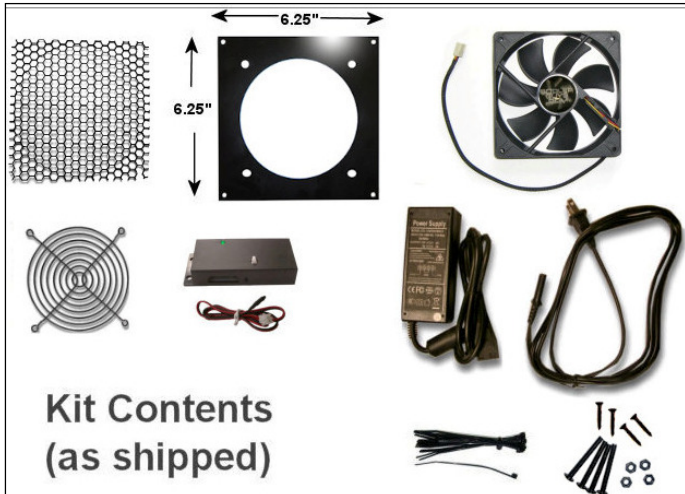


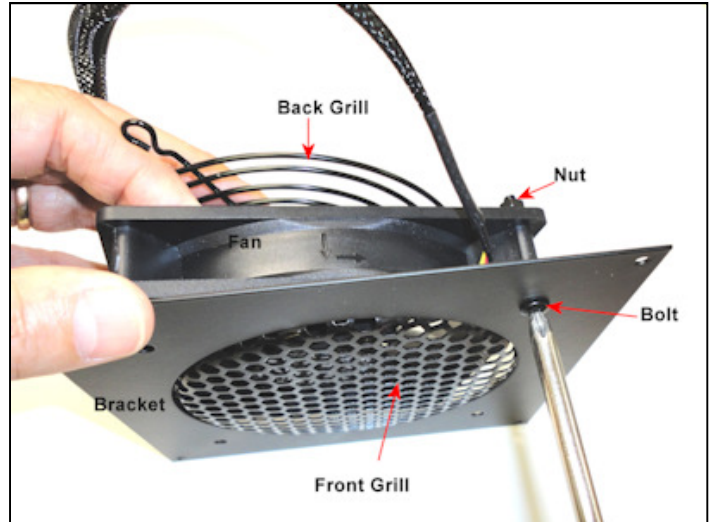
General Instructions for Coolerguys Cooling Kit Installation



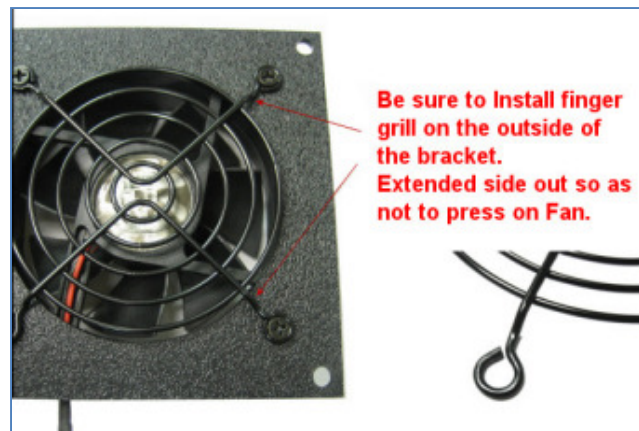
(1) Parts: Bracket, Fan, Grill, nuts/bolts, Thermal Switch, Zip ties, Power supply. Some kits have more or less accessories depending on your purchase.



(3) Completed unit. Front grill should be concaved outward. Some units have finger grills in front that are attached on the outside of the bracket. Make sure that grills do not interfere with movement of the fan.



(2) Using the Nut and Bolts attach the grills to the fan and bracket by sliding bolt through bracket then front grill then fan and back grill. Then attach nut to bolt. Repeat on each corner of fan. Direction of air flow can be changed by reversing position of fan before attaching to bracket.



Sample kit with front finger grill on outside.



Measure the exact cutout size you need to install the bracket. The size will be noted on the product information sheet and on our website. Attach bracket to cabinet using the enclosed wood screws. Connect fan to power source or thermal controller.

We are continually improving and updating our products. Check online for demo videos and updated specifications.