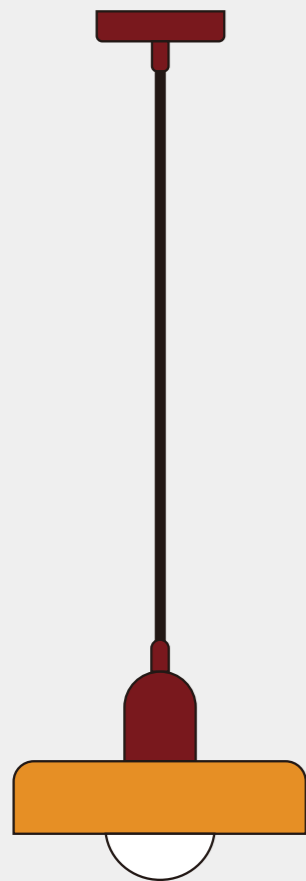
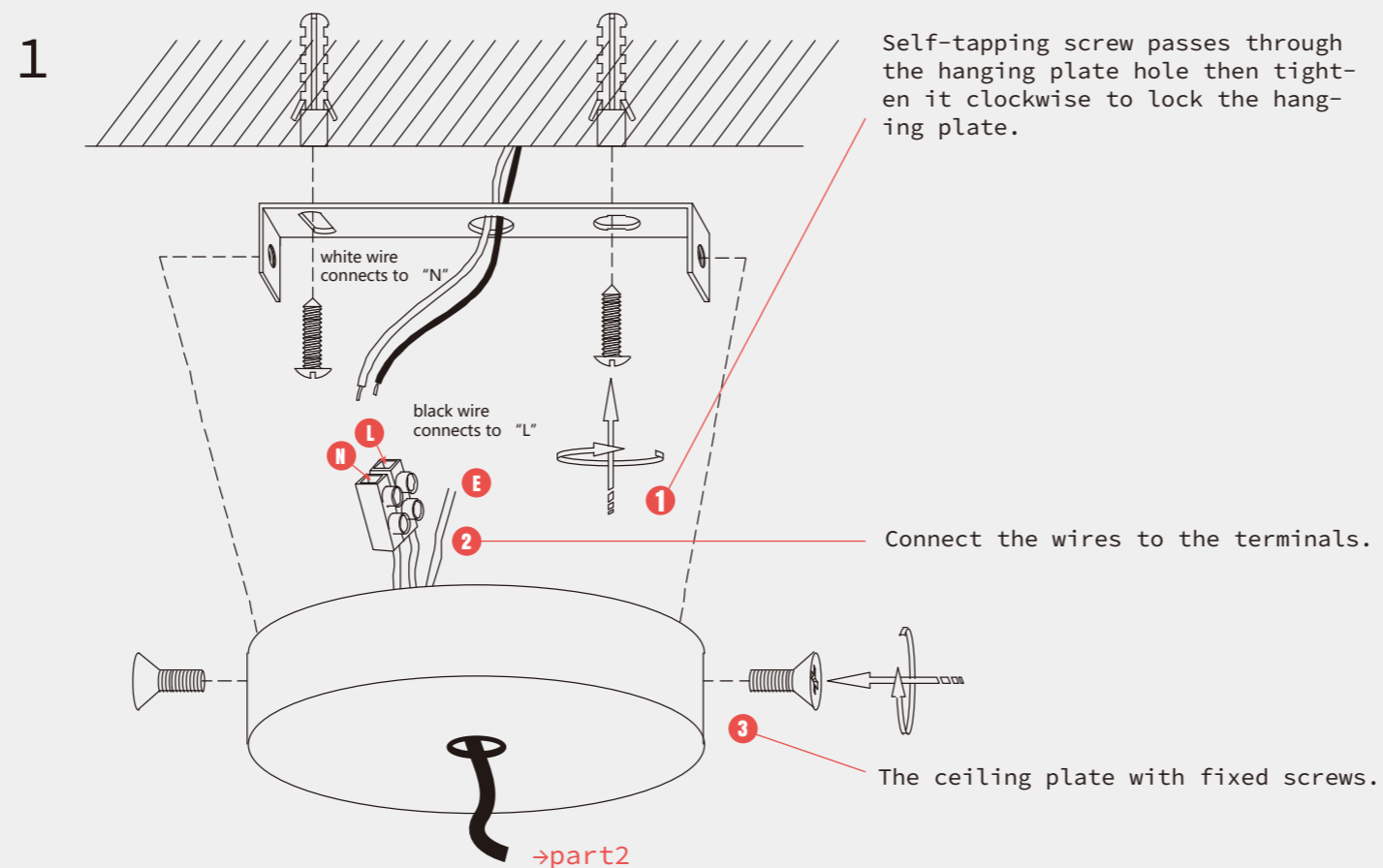


# Installation Instructions



Bauhaus Stained  
Glass Pendant Light



## THE LAMP INSTRUCTION



### Maintenance

- 1.Voltage/Frequency:110-240V 50HZ/E26:Max.40W.
- 2.Please wear gloves when install.
- 3.Don't install it on the moist ceiling.
- 4.Turn off the power before cleaning out.
- 5.Please wash with the sanitizer without corrosivity.

### Precautions

Keep the lighting away from acidic chemical solvents to avoid damage.

### Tip

Please follow the instructions then install the parts in the correct order.

