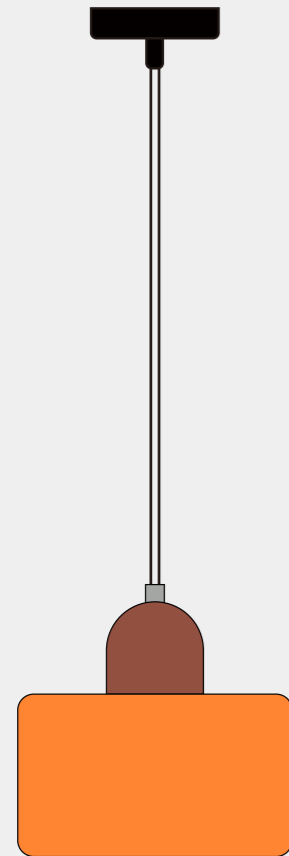
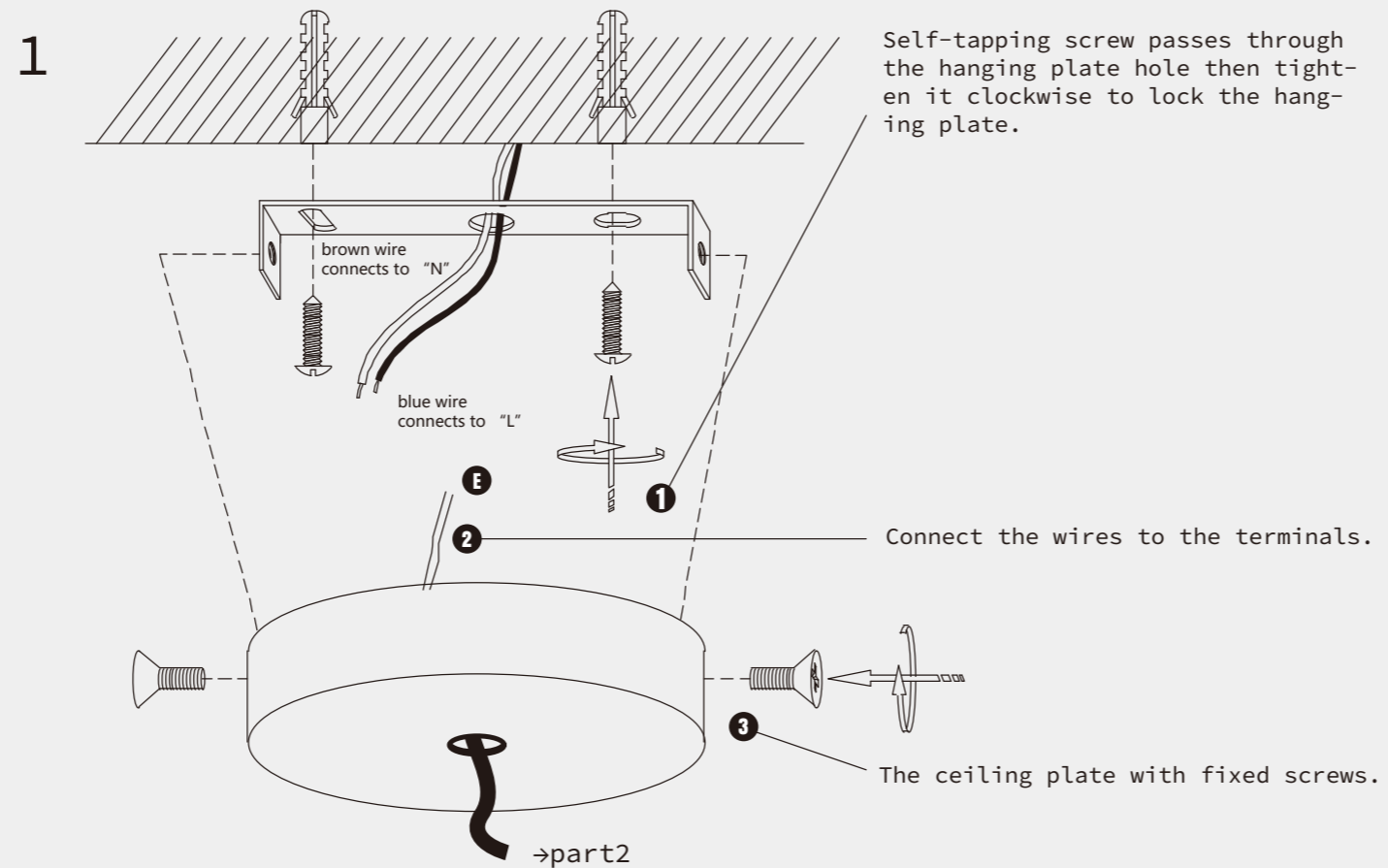


Installation Instructions



Bauhaus Small Glass
Pendant Light

CL0518



THE LAMP INSTRUCTION



Maintenance	Precautions
1.Voltage:110-240V	Keep the lighting away from acidic chemical solvents to avoid damage.
2.Please wear gloves when install.	
3.Don't install it on the moist ceiling.	Tip Please follow the instructions then install the parts in the correct order.
4.Turn off the power before cleaning out.	
5.Please wash with the sanitizer without corrosivity.	

