



Churrasqueiras e Parrillas



## FEATURES AND BENEFITS

HIGH PERFORMANCE

### PARRILLA COOKTOP



EXAMPLE PHOTO: PARRILLA COOKTOP  
WITH STANDARD SKEWERS

#### SIZES

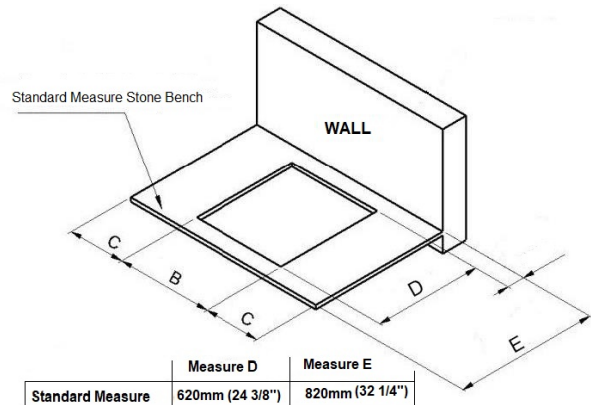
- Available in 02 sizes 585mm (23") and 785mm (30 7/8")

#### BENEFITS

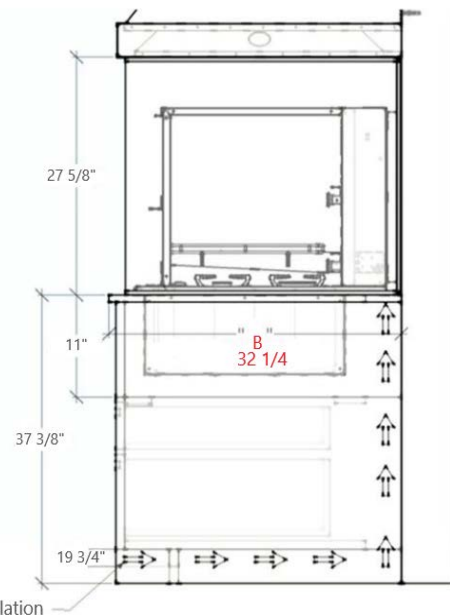
- No masonry construction need;
- Fully integratable into the environment, be it kitchen, gourmet space or balconies;
- V - grill system or round;
- Non - motorized level allows interchangeable use of skewers or grill.
- On / Off Bottom;
- Top rest is an optional accessory.

#### EQUIPMENT INSTALLATION

- Easy installation



MODEL	MEASURE B	MEASURE C
585mm 23"	550mm 21. 5/8"	>= 100mm 4"
785mm 30. 7/8"	750mm 29. 1/8"	>= 100mm 4"



SCHEER CHURRASQUEIRAS RUA  
ROQUE CALLEGE, 133 |  
CEP 95041-440 | UNIVERSITÁRIO |  
CAXIAS DO SUL | RS | BRASIL

BRAZIL:

+55 54 3224.3066  
SCHEER.COM.BR

UNITED STATES:

+1 954 4152161  
SCHEERUSA.COM

EUROPA

+31 6 82902464

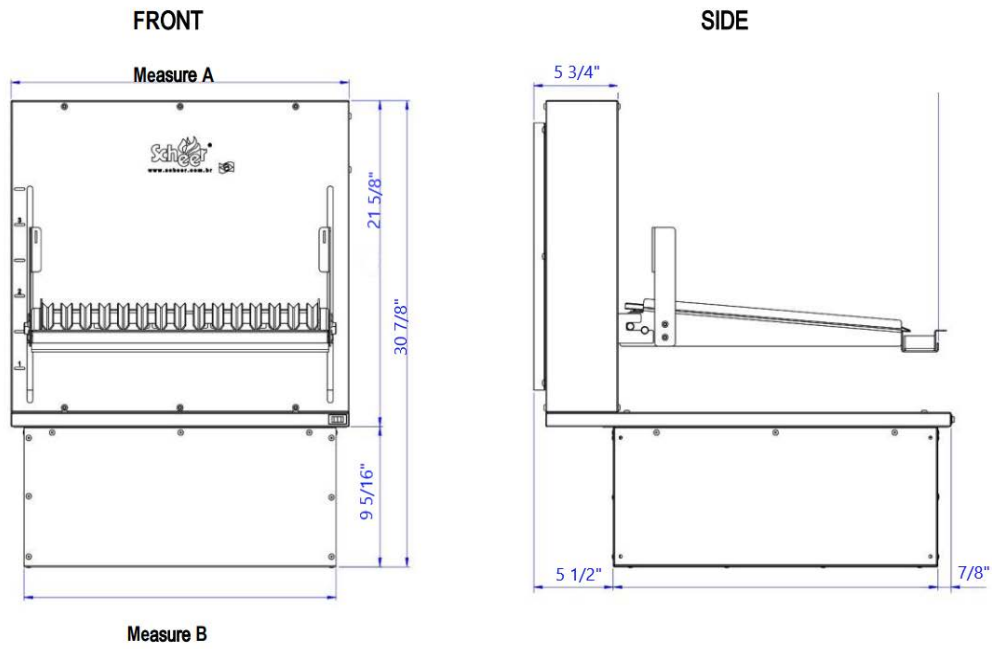
JAPAN:

+81 3 3280 1035  
KYODAIMARKET.COM

AUSTRALIA:

+61 2 9986 2004  
PROLINEEQUIPMENT.COM.AU





MODEL	MEASURE A	MEASURE B	CHARCOAL CAPACITY
585 mm (23")	585 mm (23")	540 mm (21 1/4")	Until 3kg (6,61lb)
785 mm (30 7/8")	785 mm (30 7/8")	740 mm (29 1/8")	Until 4kg (8,81lb)

#### INFORMATIONS CONSIDERING THE STANDARD BENCH INSTALLATION

MODEL	NET WEIGHT (Kg) (lbs)	GROSS WEIGHT (Kg) (lb)	PACKAGE LENGHT	PACKAGE HEIGHT	DEPHT
585mm (23")	25 (55 lbs)	43 (95 lbs)	755 (29")	585 (23")	695 (27 3/8")
785mm (30 7/8")	29 (63 lbs)	50 (110 lbs)	955 (37")	585 (23")	695 (27 3/8")

#### ADDITIONAL INFORMATION

##### ELETRICITY

- Motor machine: 110V / 220V;
- Frequency: 50/60Hz;

#### UTILITY INFORMATIONS

- Only Charcoal; Any other combustibile material will damage the equipment.
- Do not use firewood, wood or kindling to make the fire in BBQ.