

RECORD POWER
ESTABLISHED 1909®

Catalogue

Canada version

Prices valid from 1st July 2020. E&OE.

Over
100
years
Experience • Knowledge
Support • Expertise



**Brand New Range of
Coronet Woodturning
Lathes.
Plus UK Manufactured
CamVac High Pressure
Dust Extraction System**





RPCV12A 12 Piece Carving Chisel Set, Educational Booklet & DVD

This unique woodcarving package of 12 carving tool profiles, instructional DVD and booklet represents incredible value. Ideal for woodworkers of all skill levels from the complete novice to the seasoned professional. Each tool is manufactured from spring alloy steel, developed to retain its cutting edge and resistance to corrosion. The ergonomically shaped handles are suitable for both hand and mallet work and a substantial tang secures the blade into the handle to ensure strength and durability, locked in place by a ferrule preventing the handle from splitting.

The DVD features British Woodcarver Mike Davies, busy at work on a large carving project in New Zealand. Hailed by local media as 'A gift to

the Nation', the work is followed by national television and newspapers and is beamed via live webcams to viewers around the world. Mike takes time away from the project to share his simple to follow, step-by-step woodcarving wisdom in the workshop.

He demonstrates the 'Significant Six' techniques that form a solid foundation of skills for successful woodcarving. By following this proven system, the aspiring woodcarver will soon be creating a collection of attractive projects and designs using this comprehensive selection of tool profiles.

Only \$189.99



Foundation Skills DVD with Mike Davies



Featured on the DVD

- Tool talk
- Sharpening & maintenance
- The Significant Six techniques
- Timber selection
- Basic flower project
- 'Practice makes perfect' project
- Tips and tools



The 16 Page full colour companion booklet features a collection of projects to put your skill to the test.

15 Projects Available for FREE!

To accompany the range of carving chisels, Mike has created 15 projects which show a wide range of designs ideal for beginner and intermediate carvers. All projects use and reference the tool profiles in the carving chisel set, making this collection of projects the ideal learning resource for budding carvers!

Woodcarving by Numbers with Mike Davies Guilloche



All 15 projects are available in the projects section of 'The Workshop' at www.recordpower.co.uk

THE STORY OF THE CORONET RANGE



Record Power have a long history of making good quality lathes right back to our Coronet roots in 1945 - around 75 years of accumulated experience and knowledge. Our lathes earned a strong reputation as well-engineered and robust machines and we are proud of our heritage.

But many of the designs had only minor changes and upgrades in the last 25 years and whilst there is as strong argument for "If it ain't broke, don't fix it" - we felt it was now possible to improve on our classic machines and develop a new range suited to a broad section of woodturning enthusiasts in a wide range of markets.

The Coronet Herald was the first of these projects and has been a huge success. Our intention was to create a machine that was best-in-class for a benchtop machine - but versatile and capable enough to be used as a floor-standing machine when necessary. It has been popular across a wide spread of users from first-time turners that want a machine that they will not outgrow in a hurry (if at all), to upgraders frustrated by the limitations of cheaper machines but without the space or requirement for a big beast. It is also seen often on the professional demonstration circuit and in teaching rooms, where its compact nature belies its power, torque and capability. The Herald is a versatile and very capable 'pocket rocket' that may be all the lathe many users will ever need.

However, for the next step we wanted to find a balance between a superbly capable and compact machine like the Herald and the big, heavy beasts designed mainly for large out of balance work. There is a place for these if the majority of your turning is of very big bowls, platters or hollow vessels - but whilst perfectly specified for those applications they can be big, heavy and tiring to use for smaller work if you enjoy a wider range of projects and turning applications.

We envisaged machines bigger than the Herald, with more power and weight - better suited to those users that do more big and out of balance work - but still compact and user friendly enough to be real 'all-rounders' that are just at home turning a pen or a small piece of jewellery, right up to a huge platter up to a metre in diameter. And this is how the Envoy and Regent were designed. A useful capacity between centres that can be easily increased if necessary. Very usable capacity over the bed but with swivel heads that can increase that even further. Fully cast construction, including the supplied leg stands, and plenty of power and torque on hand make these lathes ideal for the most demanding of tasks.

The Herald is a great choice for smaller workshops, general use and anyone turning up to 14" on a regular basis, which is the vast majority of people. But for those that want more weight, power and capacity to tackle bigger projects more comfortably or turn items over 14" diameter on a regular basis - the Envoy and Regent are a great choice.

The Envoy and Regent share the same design and features - the only difference being the power, specs and component choices on each machine. The Regent is designed to be the ultimate machine in its class with generous capacities, more than enough motor power and using European-branded inverter and electronics. The Envoy is designed to offer close to Regent performance but at the best price we can manage. So, it has slightly smaller capacities, a lower power motor (though still ahead of many similarly specified rivals) and an OEM inverter to keep costs as low as possible but without losing too much capability. Both machines are backed up by our exceptional Five-year guarantee.



Coronet Herald Heavy-Duty Cast Iron Electronic Variable Speed Lathe

This lathe from Record Power represents the culmination of many decades of expertise in the manufacture and supply of superior woodturning lathes. Developed with the help of professional woodturners and keen hobbyists, we believe we have produced a world-class machine for woodturners of all levels. Thanks to a number of innovative design solutions the capabilities, features and performance of the Herald far exceed anything a machine of this size has been capable of before - It brings top-end professional performance at a fraction of the size and cost of comparable heavy-duty machines.

To reflect the Record Power heritage in a modern context, the look of the lathe incorporates the elegant and balanced curves of the earlier Coronet series in a more streamlined and efficient form. As well as looking great, the Herald feels great - the excellence of engineering, ergonomics and quality manufacturing can be felt throughout, making the lathe a pleasure to use whilst delivering rock solid performance.

Video Available



youtube.com/RecordPowerTV



**530 mm
(21")
bowl turning
capacity
using the optional
outrigger**

Shown with optional leg stand.

Only **\$1699.99**

CORONET HERALD VARIABLE SPEED LATHE SPECIFICATIONS

Maximum bowl diameter: 530 mm (21")	Motor input P1: 1000 W (1.3 HP)	Taper: 2 Morse taper
Maximum between centres: 508 mm (20")	Motor output P2: 750 W (1 HP)	Weight: 48 kg (106 lbs)
Maximum swing over bed: 355 mm (14")	Voltage: 110 V	Size: W870 x D290 x H252 mm
Spindle speeds: 95-3890 rpm	Thread: 1 1/4" x 8 TPI	W34 1/4" x D11 1/2" x H10"



State-of-the-Art Motor and Full Electronic Variable Speed

The 750 W (1 HP) motor features the latest in motor technology to give huge amounts of torque, comparable to lathes over twice the size and motor rating. Instantaneous speed change is achieved using the easily accessible control panel. Reversing is also offered for sanding or left handed turning (Must be used only with suitable locking systems for chucks and accessories).



3-Step Pulley

A 3-step pulley is provided for maximum versatility. For most turning the middle pulley is perfect and provides good torque but if you need maximum torque comparable to much larger lathes for heavy cuts or low speed work, then the bottom pulley has immense torque capability. For very small work, polishing or burnishing acrylics, the top pulley gives access to very high speeds.



Heavy-Duty Spindle Lock and Indexing

Holds the spindle securely and offers a full 24 point indexing function.



Rotating and Sliding Headstock

Unlike most cast bed lathes, the headstock of the Herald can be rotated 360°, optimising access and also making it ideal for left-handed turners, who can effectively turn this machine into a fully left-handed lathe using the reverse facility of the control system. A bearing system beneath the headstock allows it to be located in popular positions. The headstock can also be moved along the lathe bed if required.



Shown with optional Bench Feet

OPTIONAL FITMENTS:



16015 Tubular Stand \$224.99



16013 Cast Iron Outrigger \$69.99



16011 Cast Iron Bed Extension \$259.99



16012 Bench Feet \$99.99



16208 In-Line Emergency Stop Switch \$69.99



16211 5" Tool Rest \$54.99



16213 10" Tool Rest \$61.99



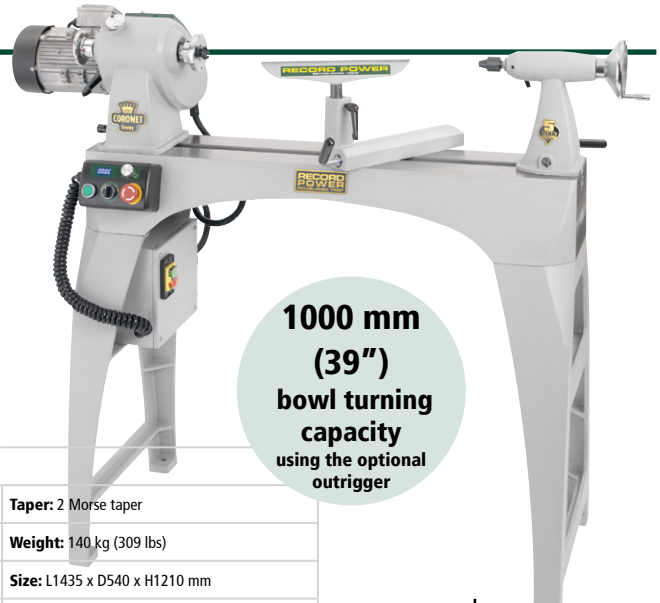
16214 12" Tool Rest \$66.99



Coronet Envoy Heavy-Duty Cast Iron Electronic Variable Speed Lathe

Part of the exclusive range of Coronet lathes from Record Power, the Envoy is perfect for the woodturner who regularly needs the power, stability and capacities necessary for large scale work. Designed as a natural progression from the Coronet Herald, it is supported by large and heavy integral cast iron legs to give ample protection from vibration while turning out of balance timbers. The overall heavy-duty construction of the machine, along with the finely engineered and machined components make this lathe a pleasure to use.

The Envoy offers unrivalled value-for-money in its class without compromising capacity or features. It offers the benefits of electronic variable speed, a rotating and sliding headstock, reverse function and solid cast iron build throughout, yet at a cost more commonly associated with either much smaller or less well-specified lathes.



1000 mm (39") bowl turning capacity
using the optional outrigger

Only **\$2659.99**

CORONET ENVOY SPECIFICATIONS

Maximum bowl diameter: 1000 mm (39")	Motor input P1: 1.5 kW (2 HP)	Taper: 2 Morse taper
Maximum between centres: 610 mm (24")	Motor output P2: 1.1 kW (1.5 HP)	Weight: 140 kg (309 lbs)
Maximum swing over bed: 410 mm (16")	Voltage: 110 V	Size: L1435 x D540 x H1210 mm
Spindle speeds: 250 - 3800 rpm	Thread: 1 1/4" x 8 TPI	L56 1/2" x D21 1/4" x H47 1/2"

Coronet Regent Heavy-Duty Cast Iron Electronic Variable Speed Lathe

The Regent is the largest lathe in the exclusive range of Coronet lathes from Record Power and is ideal for the woodturner who regularly needs the power, stability and capacities necessary for very large scale work. It is supported by large and heavy integral cast iron legs to give ample protection from vibration while turning out of balance timbers. The overall heavy-duty construction of the machine, along with the finely engineered and machined components make this lathe a pleasure to use.

The Regent offers unrivalled value-for-money in its class without compromising capacity or features. It offers the benefits of electronic variable speed, a rotating and sliding headstock, reverse function and solid cast iron build throughout, yet at a cost more commonly associated with either much smaller or less well-specified lathes.



1000 mm (39") bowl turning capacity
using the optional outrigger

Only **\$3199.99**

CORONET REGENT SPECIFICATIONS

Maximum bowl diameter: 1000 mm (39")	Motor input P1: 2 kW (2.7 HP)	Taper: 2 Morse taper
Maximum between centres: 610 mm (24")	Motor output P2: 1.5 kW (2 HP)	Weight: 145 kg (320 lbs)
Maximum swing over bed: 460 mm (18")	Voltage: 220 V	Size: L1475 x D540 x H1235 mm
Spindle speeds: 250 - 3800 rpm	Thread: 1 1/4" x 8 TPI	L58" x D21 1/4" x H48 1/2"

OPTIONAL FITMENTS: For Envoy and Regent



17500 Cast Iron Outrigger **\$239.99**



17600 520mm (20 1/2") Cast Iron Bed Extension **\$259.99**



- 12401** 4" Toolrest (1" Stem) **\$52.99**
- 12402** 6" Toolrest (1" Stem) **\$54.99**
- 12403** 8" Toolrest (1" Stem) **\$56.99**
- 12404** 12" Toolrest (1" Stem) **\$66.99**

Features of the **Envoy** and **Regent** Lathes



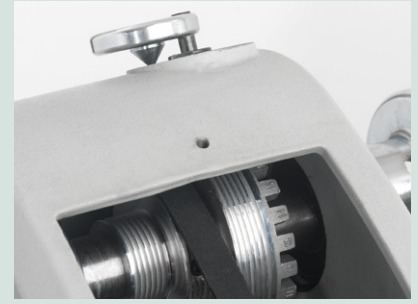
Rotating and Sliding Headstock

Unlike many cast bed lathes, the headstocks can be rotated 360°, optimising access and also making them ideal for left-handed turners. A bearing system beneath the headstocks allow them to be locked in popular positions and can also be moved along the bed if required.



Powerful Motor and Electronic Variable Speed

The motors provide more than enough power to handle the large timbers the lathes are capable of holding and instantaneous speed change is achieved using the easily accessible control panel. Reverse direction turning is also possible, making them ideal for sanding.



Heavy-Duty Spindle Lock and Indexing

Holds the spindle securely and offers a full 24 point indexing function.



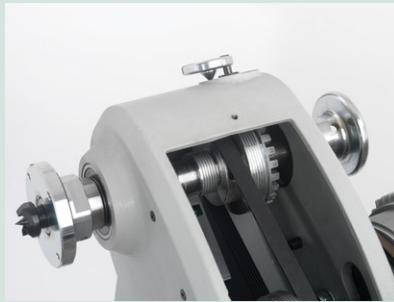
Heavy-Duty Tool Rest Stem

The 1" diameter tool rest stems helps minimise vibration, giving a smoother and easier cut.



Repositionable Control Panel

The control panels can be placed anywhere on the lathes and are secured from the rear with a strong magnet. Ideal when turning large timbers which can limit access to the headstock-mounted fixed control panels found on many lathes.



3-Step Pulley

A 3-step pulley is provided for maximum versatility. For most turning the middle pulley is ideal and provides good torque and the bottom pulley has immense torque capability for heavy cuts and low speeds, with the top pulley giving access to the highest speeds. The drive belt position can be seen through the inspection window of the headstock.



Optional Outrigger and Bed Extension

Extend the capacities of both lathes with these optional fitments.



Cam Lock

The tool rest holders and tailstocks are locked in place instantly with the easy to use cam locking system.



Hand Wheel

The headstocks feature a substantial hand wheel to turn the spindle, making fitment of headstock accessories much easier.



Tailstock

The self-ejecting tailstocks allow for accessories to be easily and quickly removed without the need for a knockout bar. They accept 2 Morse taper accessories, providing excellent strength and solidity.

What Makes a Premium Chuck?

The SC Series from Record Power is a range of Premium chucks and Jaws for the serious or professional Woodturner. Developed through consultation with hobby users, professional woodturners and specialist woodturning retailers, we have designed what we believe is the most flexible and best value system in its sector of the market.

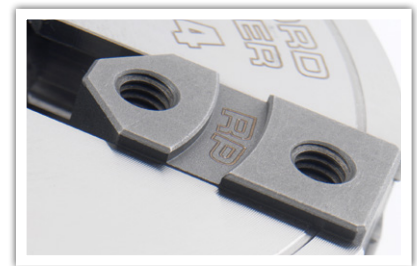
When there are so many similar looking chucks available - what actually makes a premium chuck?



Quality

To achieve repeatable accuracy, premium chucks invest in manufacturing tooling, which can represent a significant investment. However, many cheap brands often machine such components from steel using manual machines, with variable results in quality. Repeatable accuracy is important not only to deliver the same performance from one chuck to another and ensure safety, but also for backup and support as well as accurate fixing and use of accessories and jaws. The scroll ring, pinions and jaw carriers are

critical components in any chuck, as is accurate machining of the body. Record Power use sintered jaw carriers and investment casting for scroll ring and pinions to ensure these have high tolerances. The bodies are machined on modern 3-axis CNC machines to very tight tolerances to ensure the best balance between ease of scroll movement and accurate fit, with some resistance to reduce wear and play in the carriers.



Extra large heavy duty jaw slides

Design

It is critical that the chucks are easy and safe to operate, intuitive in use and have an adequate range of jaws to suit as many applications as possible. In our redesign of the SC range we made the scroll-action more intuitive, reversing the scroll direction so you close with a clockwise action and open with an anti-clockwise action. We improved the insert system both in terms of its accuracy of location and also by enabling a wider range of threads to be accommodated. This helps woodturners who want to future-proof potential upgrades to their lathe or may have a number of lathes with different thread spindles. We offer an uninterrupted series of indexing holes on the backing plate of the SC4 which can be used with a bench or lathe-mounted jig that can be made up to best suit your own machine.

The jaw range has been significantly rationalised to 14 sets that cover virtually all applications most woodturners will ever need. Utilising our research with serious users - both professional

and hobby - we adapted our jaws to have as many functions as possible without duplicating too many of the abilities of other jaws in the system. This means each jaw has a clear role in the woodturner's arsenal, making jaw selection easier and because we have condensed these functions into as small a range as we believe viable, it makes it a very economic system to invest in.

The jaw slides and scroll ring (which provide the grip and power) are identical in both chucks and share the same jaw mounting holes. This ensures that the full range of jaws is available for either chuck and with the same performance - so additional bodies and jaws will always be compatible throughout the system with no compromise in performance. In addition, the jaw slides have been increased in size from our previous models, giving better support to the jaws.



Precision engineered gears



Sealed backing plate with full 72-point indexing

Finish

The finish of the body and components is to a very high standard and care has been taken to chamfer the edges so the whole finish is smooth and sleek, meaning that not only do they look

impressive, they feel great to hold. Lower quality chucks tend to possess a rough finish, with poor surface consistency and sharp edges.



SC4 features integral cast pinions

Record Power Chucks and Jaws: What the Professionals Say

Professional woodturners need tools they can rely on, which will stand up to rigorous and prolonged use day in, day out, often at the extremes of their intended capacities. It is for this reason that many professional woodturners around the world rely on Record Power's SC series chucks and jaws. The reliability, consistency and affordability of this range make it the perfect choice for woodturning enthusiasts and professional turners alike. As well as the sheer quality of manufacture and design, a key reason for the success of this range is that it was developed with the help of professional turners, to ensure we can satisfy even the most demanding needs. We are extremely proud that some of the world's best woodturners choose Record Power to help them in their work.

Paul Howard - United Kingdom

Having a mechanical engineering background has encouraged me to explore the many facets of woodturning and now I am semi-retired and living back in the UK I have had the luxury of being able to spend more time woodturning and teaching small groups of people. I have also been able to spend time developing products and ideas that can be of help to other wood turners.

www.paulhowardwoodturner.co.uk

"I purchased my first SC4 chuck at a show several years ago and I must say I was very impressed with the quality. The first time I used the chuck I found the accuracy of the chuck spot on...I have now added more SC4 chucks to my collection so when I teach in my workshop all the lathes have the same equipment...Overall I would highly recommend the Record chuck on quality and it is extremely good value, not only for the chuck but also the accessories."



Kai Muenzer – Canada

I have been tinkering with wood for a very long time. Small repairs to furniture projects – some of these seemed to take forever to finish. In 2007 I took a class with Graeme Priddle who infected me with the wood turning bug which I seem not able to shake off. I discovered a new world of artistry and craftsmanship and began developing my turning and carving skills.

Natural wood with all its irregularities gets a beautiful symmetrical shape through the work on the lathe. I like to explore that symmetry. Combining options based on character and size of a piece of wood with ideas for practical and useful or just interesting designs I typically begin a process of refinement and exploring possibilities by sketches and dummies.

www.kaimuenzer.com

"I needed a strong chuck that can safely grip large side grain pieces via long nose jaws. The Record Power was the right chuck for the job. The enclosed housing of the SC4 chuck keeps out the dust entering from the drive side, thus supporting a well functioning closing mechanism without need of frequent maintenance."



Theo Haralampou – Australia

I took up woodturning over 20 years ago so I could turn my own drumsticks and make gifts for my family and friends.

Demonstrating and teaching woodturning is now my passion and full time endeavour. Apart from demonstrating throughout Australia I have also presented in the USA, China, Cambodia, Laos, Norway and New Zealand.

My philosophy is that life is too short, so we should enjoy the journey, share with others and leave something to show we were here.

www.woodturner.com.au

"I've been using the Record Power SC3 and SC4 chucks and jaws for some time now during my streaming and live presentations. I have been extremely happy with their accuracy, rigidity, ease of use and holding power."



Terry Scott - New Zealand

It has been said there is a high degree of skill and finesse in my work, yet the end result often appears light and free-flowing. These qualities invite the viewer in and allow one's eye to play, while the mind is left to wander and be inspired. I have travelled the woodturning world for the last 20 years and mixed with many of the world's best turners learning new techniques which I have gone on to further develop and incorporate into my art. These techniques include carving, texturing, colouring and the study of correct form.

www.timberly.co.nz

"First impressions of the SC4 chuck were good and the chuck well packaged. The standard 50 mm jaws were easily aligned and fitted and the chuck ran true.

Value for money: with the additional faceplate ring very competitive with others in its price range. The faceplate ring also means a turner that has no faceplate can again get turning by leaving the chuck on the lathe."



Andy Chen – USA

Andy Chen is from College Station, Texas. He is a self-taught wood enthusiast and has been woodworking almost his entire adult life.

Andy has demonstrated at numerous turning clubs and regional and national symposia and internationally. He has taught at Arrowmont. His woodturnings are in many private collections. His segmented work has been shown in galleries in Kerrville, TX (Kerr Arts and Cultural Center), Houston, TX (Houston Center for Contemporary Craft) and they were represented by Whistle Pik Galleries in Fredericksburg, TX. He was invited to participate in a del Mano Gallery's exhibition, Piece by Piece, in 2013. His work has also been included in the photo gallery of Ron Hampton's book: Segmented Turning: A Complete Guide.

www.andyscustomcraft.com

"I used a Record Power Coronet Herald lathe for demonstrating woodturning in Stübling, Austria in March 2019 at the World Wood Day celebrations. I also used the Record Power Scroll chucks with a range of jaws. These chucks are well designed and manufactured with a tight tolerance and very nice workmanship."



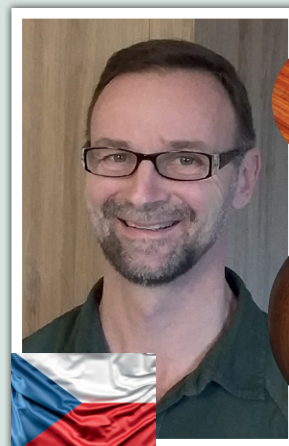
Jiří Chmelař, Czech Republic

Since 2009 woodturning has become a passion to me. I am a self-taught turner and paradoxically, being a school teacher I prefer this way of learning i.e. exploring, experimenting and learning by doing. It is also in my teaching motto: take your students half way there, and then let them explore and find the rest.

I took part in Prague Design Week 2016 and was encouraged by the response of the public, so I have started preparing a new collection called Beauty of Wood. This will include both woodturning and woodworking projects ranging from bowls, vases, and lamps through wood turned coffee tables, plant stands and sculptures, to tables and wooden art.

www.krasadreva.cz

"I truly enjoy working with the SC4 chuck – it is precise, user-friendly and a winner in its class."





Differences Between the SC3 and SC4

As both chucks use the same critical drive components and offer the same gripping performance with the full range of jaws available we are often asked what the difference is and that is actually quite straightforward:

SC3

Designed for the woodturner that wants a premium chuck with no compromise in performance and at the best price possible. It uses the same scroll and jaw carriers as the SC4 and has a smaller body because the scroll is engaged through a hole in the side of the body using a traditional chuck key. This is the lowest cost solution, removing the need for intermediate pinions and reducing body size and steel and without affecting the performance of the chuck. Supplied as direct thread bodies only (in the 3 most popular threads for Europe), removing the additional cost of an insert and simplifying the machining. The backing plate is also not present on the SC3 as there are no pinions to keep in place and it is not essential. Therefore we provide the range and performance of the SC4 at the lowest price possible.



SC4

This has a larger body as it features integral pinions to drive the scroll ring, giving the benefit of being able to use a ball-end hex key for easier operation. It also offers the option of adding aftermarket hex keys with longer shafts if you have particularly large work mounted. A backing plate keeps the pinions in place and features indexing holes as well as keeping all the internal mechanisms much better protected from dust and resin so the requirement for maintenance and cleaning is much reduced. Perhaps most importantly, this chuck is provided as an 'insert' chuck and an insert of choice is included in the price. This provides the user the opportunity to use the chuck on more than one lathe with different thread spindles by simply changing the low cost insert rather than requiring an additional body. An insert also provides future proofing so that any machine upgrades will not require a new chuck even if the spindle thread changes, just a change of insert.



SC3 Geared Scroll Chuck

Includes:

- SC3** Geared Scroll Chuck
- 62313** 50 mm Standard Jaws
- 62833** Deep Wood Screw
- 62816** Operating Handle
- 62572** 87 mm (3 1/2") Faceplate Ring

Thread Options:

- 61066** 1 1/4" x 8 TPI
- 61064** 3/4" x 16 TPI
- 61062** 1" x 8 TPI
- 61065** M33 x 3.5
- 61060** M30 x 3.5
- 61069** 1" x 10 TPI



\$199.99

SC4 Professional Geared Scroll Chuck

Includes:

- SC4** Professional Geared Scroll Chuck
- 62313** 50 mm Standard Jaws
- 62833** Deep Wood Screw
- 62826** 8 mm Ball Hex Key
- 62825** Universal Wrench
- 62572** 87 mm (3 1/2") Faceplate Ring

Also includes FREE insert worth \$24.99

(See page 14 for full range of inserts)

\$268.49



SC3 and SC4 At a Glance

	SC3	SC4
CNC machined bodies	✓	✓
High quality finish	✓	✓
Rigorous tolerances and quality control	✓	✓
Sintered jaw slides	✓	✓
Cast scroll ring	✓	✓
Compatible with the full range of jaws	✓	✓
Gripping power	Same	Same
Supplied with standard jaws	✓	✓
Supplied with woodscrew	✓	✓
Supplied with 3" faceplate	✓	✓
Supplied with chuck key	Traditional	Ball end hex key
90 mm diameter body	✓	
100 mm diameter body		✓
Integral cast pinions		✓
Enclosed back		✓
72 point indexing		✓
Spindle thread insert		✓
Price	\$199.99	\$268.49

62002 Companion Chuck

This companion chuck includes the chuck body, jaws slides and a set of 8 hex socket head jaw fixing screws.

\$199.99

- SC4 Insert **\$32.50**
- 62826** SC4 Ball End Hex Key **\$26.99**
- 62825** Universal Wrench **\$19.99**



SC Series Woodturning Chuck Jaw Range



Our exclusive SC range of premium woodturning jaws has been carefully developed with professional woodturners and keen amateurs to offer optimum quality, flexibility and value for money. The high standard of this range is unsurpassed - we have engineered out the superfluous features of some of the common designs that are widely available and also combined the attributes of some jaws into one design. The condensed range of 14 sets of jaws offers woodturners all the functionality they need and all jaws are compatible with both models of Record Power chuck as well as our previous Nova series chucks.



Go Online for Full Range of Chuck Videos

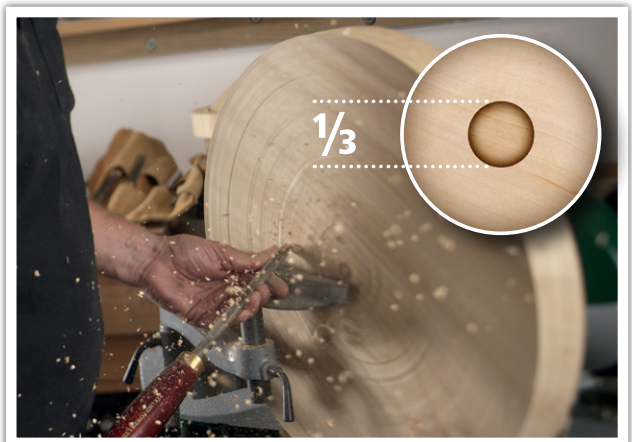
Every set of jaws is featured in our online collection of videos, explaining their uses and specifications in full detail. See the jaws in action and find the perfect fit for your project



 [youtube.com/RecordPowerTV](https://www.youtube.com/RecordPowerTV)

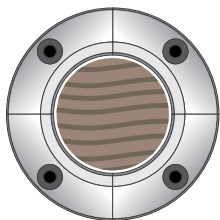
The One-Third Design Principle


This is a principle to which most woodturners work when turning bowls and platters. As a general rule, the work will look most balanced when the diameter of the recess or spigot of the bowl is one third of its overall diameter.

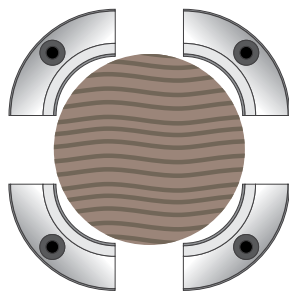



Jaw Capacities Explained

We are frequently asked what the best sized jaws to use for certain types of project are. It is a common misconception that the wider the range of sizes a jaw will accommodate (as quoted in their expansion and contraction specifications), the more useful and therefore better value they must be. This is not the case - As any professional woodturner will confirm, whether expanding into a recess or contracting onto a spigot, the more contact the jaws have with the wood, the better the hold. This means that jaws grip most effectively when in a contracted state. If the jaws are fully open, the contact with the wood will be minimal and the grip weak.



 Support to the full circumference



 Insufficient contact gives poor grip

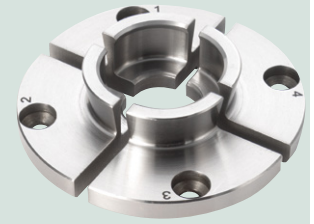
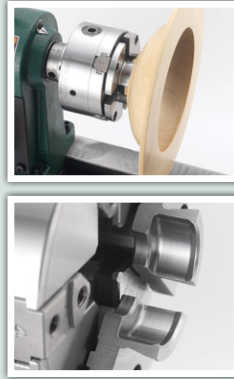
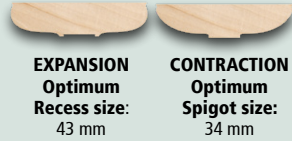


62321 35 mm Standard Jaws

These jaws are a smaller version of the standard 50 mm jaws, featuring the same dovetail profile in expansion and the superb grip of the hawk beak design on contraction. Designed specifically for smaller spigots and recesses, this set is incredibly versatile and makes a great addition to any turner's tool collection.

\$59.99

Expansion: 38 - 58 mm
Contraction (Spigot): 28 - 47 mm
Contraction (Square): 16 - 37 mm

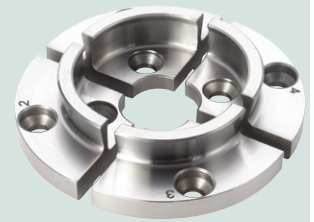
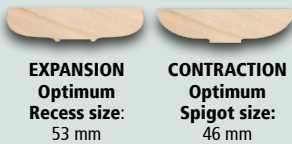


62313 50 mm Standard Jaws

Featuring a specialised dovetail profile in expansion and the superb grip of the hawk beak design on contraction, these versatile jaws are a great all-round set, capable of bowl work to a good size and also spigot turning. They are supplied as standard with the SC3 and SC4 chucks.

\$66.99

Expansion: 52 - 72 mm
Contraction (Spigot): 42 - 61 mm
Contraction (Square): 30 - 51 mm

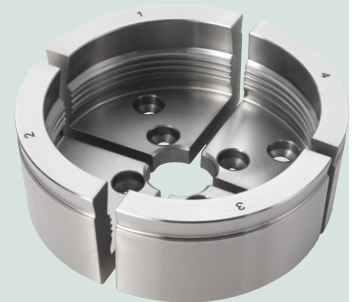


62329 100 mm Dovetail and Deep Gripper Jaws

Featuring a specialised dovetail profile, these jaws are ideal for turning large bowls, green timber and hollow vessels. They combine the profile of our previously popular 100 mm dovetail jaws with a deep body and internal teeth to improve versatility. The outer dovetail jaws are ideal for large bowls or platters, particularly when gripping onto a spigot and the deep internal toothed body is ideal for large spigots of large hollow vessels.

\$77.99

Expansion: 94 - 114 mm
Contraction (Spigot): 76 - 95 mm
Contraction (Square): 54 - 74 mm

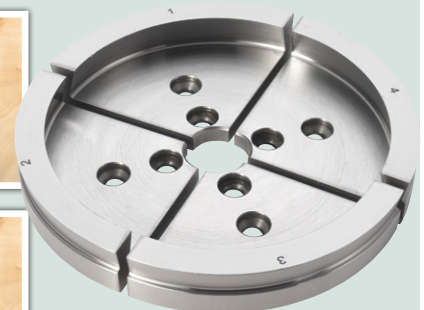


62317 130 mm Dovetail Jaws

Featuring a specialised dovetail profile, these jaws are ideal for turning up to 30" bowls. They also feature a reverse dovetail for a contracting grip on large spigots.

\$82.99

Expansion: 125 - 145 mm
Contraction (Spigot): 104 - 123 mm
Contraction (Square): 74 - 94 mm



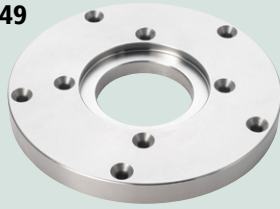


SC Series Woodturning Chuck Jaw Range

62574 126 mm (5") Faceplate Ring

This large faceplate ring is ideal for holding large bowl blanks and due to its strong hold is also suitable for more out of balance timber. It is held to the chuck using the standard 50 mm jaw set which comes complete with all Record Power chuck packages.

\$53.49



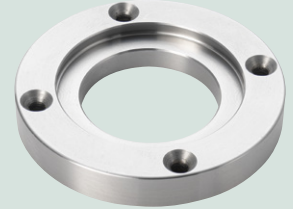
Must be used with:
62313 50 mm Standard Jaws
(Supplied with SC3 and SC4 chucks)

Diameter: 126 mm

62572 87 mm (3 1/2") Faceplate Ring

This faceplate ring is ideal for holding medium sized bowl blanks and due to its strong hold is also suitable for more out of balance timber. It is held to the chuck using the standard 50 mm jaw set which comes complete with all Record Power chuck packages.

\$39.99



Must be used with:
62313 50 mm Standard Jaws
(Supplied with SC3 and SC4 chucks)

Diameter: 87 mm

62337 Pen Jaws

These jaws are fantastically effective for drilling pen blanks. They eliminate the need for a drill press and offer much more accurate results and the deep grip to all four sides ensures incredible holding power. Drilling on the lathe means the feed speed of the drill bit is under your complete control, meaning a superior finish can be achieved on a wide range of materials. These jaws are also useful for working on small finials and similar projects as in addition to their strong grip, the work piece is moved forward from the chuck, allowing greater access.



\$53.49

Contraction (Spigot): 11 - 20 mm

Contraction (Square): 10 - 26 mm

62336 Mini Spigot Jaws with 13 mm Bore

To complement the pin jaw, the mini spigot jaws have also been improved. These jaws perform many of the same tasks in expansion and the extra screw hole profiles and added teeth to the outside provide tremendous grip for when this area will not be visible in the finished work piece. This set has been given a 13 mm internal diameter, making it ideal for turning strong spigots on knobs and handles, again adding to their versatility.

\$59.99



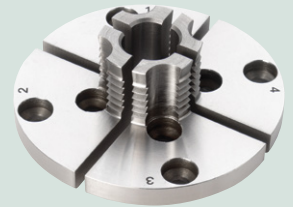
EXPANSION

Optimum Recess size: 30 mm

Expansion: 26 - 46 mm

Contraction (Spigot): 13 - 33 mm

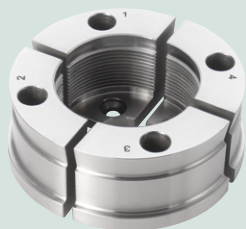
Contraction (Square): 11 - 31 mm



62322 75 mm Heavy Bowl and Gripper Jaws

These jaws are ideal for heavy bowls and vases. The wide front face provides a good register for the base of the bowl or vase and the deep toothed body provides strong grip on the spigot. The internal gripper can also be used on smaller rough green timber. Also featuring an external dovetail in expansion, it can be used for large platters. A truly versatile and solid jaw set.

\$93.99



EXPANSION
Optimum Recess size:
85 mm

CONTRACTION
Optimum Spigot size:
54 mm



Expansion: 81 - 102 mm

Contraction (Spigot): 46 - 65 mm

Contraction (Square): 33 - 54 mm

62323 Long Nose Jaws

These extremely flexible jaws feature internal and external dovetails for bowl work. The deep internal grip is versatile but main benefit of these jaws is to project the work away from the chuck, allowing good tool access to the base of the timber for cleaning and shaping.

\$84.49



EXPANSION
Optimum Recess size:
56 mm

CONTRACTION
Optimum Spigot size:
46 mm



Expansion: 54 - 74 mm

Contraction (Spigot): 38 - 58 mm

Contraction (Square): 27.5 - 48 mm

62327 Pin Jaws with 9 mm Bore

Our pin jaws have been improved by squaring the external shoulder to allow workpieces to properly register against the back of the jaws. This is ideal for use in expansion, to grip tubes in work pieces such as pepper or salt grinders. We have also reduced the internal diameter to 9 mm, making it ideal for making finials or lace bobbins - Thereby increasing its versatility. This set is ideal for miniature turning and to grip workpieces internally without excessive damage or marking.

\$73.99



EXPANSION
Optimum Recess size: 28 mm

Expansion: 28 - 45 mm

Contraction (Spigot): 9 - 28 mm

Contraction (Square): 7 - 27 mm

62378 RP Plastic Soft Jaws

These nylon jaws are designed specifically to be cut with standard turning tools. They can be easily shaped to create bespoke jaws to fulfil exacting requirements and offer excellent grip without marking the work piece.

\$26.99



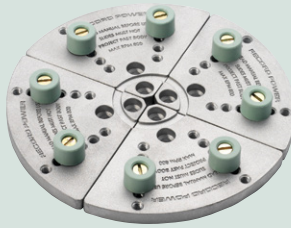
Diameter: 118 - 140 mm

Depth: 26 mm

62356 Remounting Jaws Mini Up to 200 mm Bowl

Remounting jaws are incredibly popular due to their flexibility. They work in both contraction and expansion modes and can be fitted behind other jaw sets to create bespoke set-ups to make turning more efficient. The soft stoppers are designed to hold without causing damage, making them ideal for remounting finished or partly finished objects for further work.

\$79.99

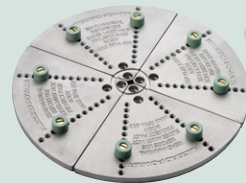


Expansion:	95 - 215 mm
Contraction (Spigot):	59 - 170 mm
Contraction (Square):	53 - 154 mm

62377 Remounting Jaws Mega with Standard and Angular Buffers

In response to many requests, we have increased the capacity of our larger remounting jaws, whilst ensuring they can still clear the bed of lathes with the popular 12" swing capacity and are capable of holding 272 mm (10 3/4") diameter bowls in contraction mode. Remounting jaws are incredibly popular due to their flexibility. They work in both contraction and expansion modes and can be fitted behind other jaw sets to create bespoke set-ups to make turning more efficient. The soft stoppers are designed to hold without causing damage, making them ideal for remounting finished or partly finished objects for further work.

\$120.49



Includes
62838 Free Angular buffer kit worth **\$26.99**



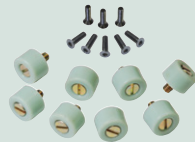
Expansion:	53 - 316 mm
Contraction (Spigot):	55 - 272 mm
Contraction (Square):	51 - 250 mm

Chuck Spares & Accessories

62835 Remounting Jaw Fastening Kit

This set of spare fastenings is compatible with the Record Power 62356 Remounting Jaws Mini and 62377 Remounting Jaws Mega.

\$25.49



62838 Angle Buffer Kit

Each buffer features two different concave curve profiles specially designed to hold 150 mm (6") bowls and 250 mm (10" bowls). The profiles also give excellent grip to irregular items, such as burred bowls.

\$26.99



62825 Universal Wrench

This wrench is specifically designed for use with the Record Power SC series chucks to remove the chuck body from the lathe and also the insert from the chuck itself.

\$19.99



Chuck Keys

62816 SC3 Key	\$26.99
62826 SC4 Ball End Hex Key	\$26.99

62836 SC-Chucks Fastening Kit

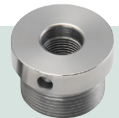
Standard fastenings spares kit for the Record Power SC3 and SC4 chucks. The kit contains 8 hex socket head screws for jaws, 3 and 4 mm hex wrenches and a blind set screw and fibre washer for chuck inserts.

\$17.49



Chuck Inserts

The **SC4** Professional Geared Scroll Chuck is available with the following insert thread sizes:



62112 Thread Adaptor M20 x 2 RH	\$32.50
62115 Thread Adaptor 7/8" x 12 TPI UN LH	\$32.50
62113 Thread Adaptor M20 x 1.5 RH	\$32.50
62125 Thread Adaptor RH M33 x 3.5 ISO	\$32.50
62126 Thread Adaptor 3/4" Plain Bore	\$32.50
62127 Thread Adaptor 1 1/8" x 8 TPI UNC RH	\$32.50
62128 Thread Adaptor 3/4" x 16 TPI UNF RH	\$32.50
62129 Thread Adaptor 1" x 10 TPI BSF RH	\$32.50
62130 Thread Adaptor RH M30 x 3.5 RH	\$32.50
62131 Thread Adaptor 1" x 12 TPI UNF RH	\$32.50
62132 Thread Adaptor 1 1/4" x 8 TPI UNS-RH	\$32.50
62133 Thread Adaptor 1" x 8 TPI UNC RH	\$32.50
62134 Thread Adaptor 5/8" Plain Bore	\$32.50
62136 Thread Adaptor 3/4" x 10 TPI BSW RH	\$32.50
62137 Thread Adaptor M24 x 3 RH	\$32.50
62152 Thread Adaptor M18 x 2.5 RH	\$32.50
62157 Thread Adaptor Blank-Can be bored up to 30 mm	\$32.50
62159 Thread Adaptor 1" x 8 TPI LH and RH Dual Threaded	\$32.50
62160 Thread Adaptor 7/8" x 14 TPI RH	\$32.50
62161 Thread Adaptor M25 x 2 RH	\$32.50
62162 Thread Adaptor 1-1/4" x 8TPI UNS RH	\$32.50

Deep Wood Screw

Ideal for mounting bowl blanks, this screw is held in the jaws of the chuck, giving exceptional holding power.

62833 Deep Wood Screw RH **\$30.99**

62834 Deep Wood Screw LH **\$30.99**

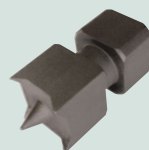
62832 Long Deep Wood Screw (for 62329 and 62322 Jaws) **\$26.99**



62811 Spur Centre

This useful centre is held in the chuck with the 50 mm (2") standard jaws to give a quick-mount solution for spindle turning, meaning the chuck need not be removed from the lathe.

\$29.99





SC1 and SC2 Professional Geared Mini-Chucks

The SC1 and SC2 are the latest additions to Record Power's premium-quality range of woodturning chucks and jaws. They have been developed in response to the needs of professional and enthusiast woodturners who needed a high quality, accurate and dependable mini-chuck for use with small work.

The SC1 and SC2 are the first mini-chucks on the market to offer woodturners a premium-quality solution for those who regularly turn small, intricate items - bringing the world-renowned quality of the SC3 and SC4 to the mini-chuck market.

They are made to the same high standards as the SC3 and SC4, on modern 3-axis CNC machinery to exacting tolerances. The jaw carriers are made using a metal injection moulding process, giving high tensile strength to these critical components, ensuring they retain their strength and holding power even when operating at the extremes of the chucks' capabilities. The scroll rings and pinions are made using an investment casting process to ensure high tolerances and repeatable accuracy.

The SC1 works in conjunction with a separately available insert, which means it can be used across a wide variety of lathes with different thread sizes, with a simple change of insert. It also makes a perfect partner to the SC4 chuck, as the inserts are a universal fit between both chucks. It also has a very compact 53.5 mm (2") diameter body - giving easier access around the workpiece making it ideal for the turning of very small items.

The SC2 is a direct-thread chuck and features a larger diameter body than the SC1, at 63.5 mm (2 1/2"), giving larger holding capacities than the SC1.

Both chucks are supplied complete with a deep wood screw, 40 mm standard dovetail jaws, chuck key and jaw fixings.

A range of jaws are available which are compatible with both the SC1 and SC2. These have been developed in consultation with expert woodturners, offering maximum flexibility to deal with the majority of applications that are needed from a mini-chuck.

SC1 2" Mini Chuck Package



\$119.99

Includes:

- SC1 2" Mini Chuck**
- 62303 40 mm Standard Jaws**
- 62831 Deep Wood Screw**
- 60219 Chuck Key**

Requires chuck insert
Sold separately (see page 14)

SC2 2 1/2" Mini Chuck Package



\$129.99

Includes:

- SC2 2 1/2" Mini Chuck**
- 62303 40 mm Standard Jaws**
- 62831 Deep Wood Screw**
- 60216 Chuck Key**

Thread Options:

- 60001 M33 x 3.5**
- 60002 1 1/4" x 8 TPI**
- 60003 1" x 8 TPI**

62301 Dome Jaws

These jaws are able to hold the smallest work pieces. The convex internal radius on each jaw is designed to avoid damage to small and fragile work. It allows the user to get very close to support thin work as safely as possible. It also allows good access to work close to the base of a work piece without the tool fouling on the jaws. For maximum support always ensure the workpiece features a spigot long enough to be supported along the full length of the jaws' internal surface. **\$49.99**



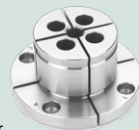
62305 Pen Jaws

These jaws are perfect for drilling pen blanks, eliminating the need for a drill press and offering much more accurate results because the deep grip to all four sides ensures excellent holding power. Drilling on the lathe means the feed speed of the drill bit is under complete control, so a superior finish can be achieved on a wide range of materials. These jaws are also useful for working on small finials and similar projects, as in addition to their strong grip, the work piece is moved forward from the chuck to allow greater access. **\$39.99**



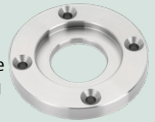
62302 Pin Jaws

Pin jaws are popular in most chuck systems and particularly useful for mini chucking systems. They can clamp small work pieces in contraction but are also useful in expansion for common projects such as salt and pepper mills and tea light holders. The internal diameter is 6 mm, making them ideal for holding the finest of work. They also feature a slight undercut at the base to ensure it is possible to fully insert the jaws into the work piece and use the base of the jaws as a register, for accurate fixing. **\$49.99**



62571 68 mm (2 11/16") Faceplate Ring

This faceplate ring is ideal for holding small to medium sized bowl blanks and due to its strong hold is also suitable for more out of balance timber. It is held to the chuck using the standard 40 mm jaw set which comes with both the SC1 and SC2 Mini Chucks.



Diameter: 68 mm (2 11/16") **\$26.99**

62303 40 mm Standard Jaws

Featuring a specialised dovetail profile in expansion and the superb grip of the hawk beak design on contraction, these versatile jaws are a great all-round set, ideal for small bowl work and also spigot turning. They are supplied as standard with the SC1 and SC2 chucks. **\$39.99**



Turning Tools

Record Power's turning tool manufacturing roots stretch back to the 1980s, when they were made in Record's Meadow Street factory in Sheffield. We are now proud to be manufacturing them again at our ever-expanding production facility close to our Sheffield roots.

These tools are made using modern CNC machining, laser-cutting and automated polishing, then ground and assembled by hand. A salt-bath heat treatment ensures the ideal level of hardness - giving the perfect balance between flexibility and retention of the cutting edge. This combination of techniques ensures that each tool is subject to accurate manufacturing tolerances and careful, rigorous inspection, to ensure their high quality finish and performance. When you buy a Record Power turning tool you are investing in many years of manufacturing expertise and knowledge from a brand with a rich heritage of woodturning specialisation.



We are proud to introduce the brand new range of turning tools made by Record Power in the UK at our in-house production facility - designed in consultation with and tested rigorously by professional woodturners, they represent a new standard in quality and value.



The blades are made of high speed steel to keep their cutting edge longer and the handles of close-grained, stable and heavy beech. The shape of the handles has been specially designed, based on the requirements of experienced woodturners, to provide a strong and comfortable grip, leaving you free to concentrate on turning.

The whole range is manufactured to a standard that makes them perfect for use by demanding professionals but also at a cost which makes them ideal for the novice turner. In addition, we offer a free online educational video which shows how to use and sharpen the tools in a clear and easy to understand format - see the Record Power YouTube channel for more details.



Video Available

www.recordpower.co.uk/training



Made in the UK

103720 3-Piece HSS Bowl Turning Tool Set

This set contains the three essential tools for bowl turning:
3/8" bowl gouge , 1/2" domed scraper 3/16" parting tool

\$144.99



Video Available

www.recordpower.co.uk/training

103710 3-Piece HSS Spindle Turning Tool Set

This set contains the three essential tools for spindle turning:
1" roughing gouge , 3/8" spindle gouge , 1/8" parting tool.

\$159.99



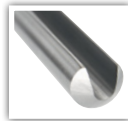
Video Available

www.recordpower.co.uk/training

Bowl Gouges

These feature an improved flute profile, designed to help clear shavings quickly for more effective and faster cutting.

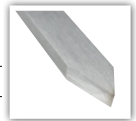
103630	1/4" Bowl Gouge, 12" Handle	\$51.99
103640	3/8" Bowl Gouge, 12" Handle	\$59.99
103650	3/8" Bowl Gouge, 16" Handle	\$66.65
103660	1/2" Bowl Gouge, 16" Handle	\$86.65



Parting Tools

Mainly used for parting the finished workpiece from the waste wood. With the correct technique they can also be used for creating beads and patterns - a truly useful and essential tool.

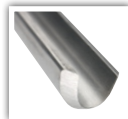
103600	3/16" Parting and Beading Tool, 12" Handle	\$51.99
103610	1/8" Parting Tool, 12" Handle	\$49.99
103620	1/16" Parting Tool	\$43.99



Roughing Gouges

Designed for use between lathe centres on parallel grain, the deep and wide flutes of these gouges remove material with speed. Ideal for roughing out spindle blanks but they can also be useful for some finer work.

103510	3/4" Roughing Gouge, 12" Handle	\$66.65
103520	1" Roughing Gouge, 12" Handle	\$86.65
103530	1-1/4" Roughing Gouge, 16" Handle	\$119.99



Scrapers

The round-nose scrapers feature a left-hand sweep to the grind, which allows them to be used on the insides of bowls with ease. Ideal for removing gouge marks and general smoothing work.

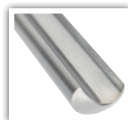
103670	1/2" Domed Scraper, 12" Handle	\$51.99
103680	3/4" Domed Scraper, 12" Handle	\$63.99
103690	3/4" Domed Scraper, 16" Handle	\$66.65
103700	1" Domed Scraper, 16" Handle	\$77.99



Spindle Gouges

These are ideal general-purpose spindle tools, ideal for producing beads, coves and sweeping profiles across a wide range of projects.

103540	1/4" Spindle Gouge, 12" Handle	\$39.99
103550	3/8" Spindle Gouge, 12" Handle	\$46.65
103560	1/2" Spindle Gouge, 12" Handle	\$51.99



Skew Chisels

Probably the most versatile tool for working between centres - they can give a silky-smooth finish and may also be used for creating beads, coves and other decorative elements.

103570	1/2" Skew Chisel, 12" Handle	\$59.99
103580	3/4" Skew Chisel, 12" Handle	\$63.99
103590	1" Skew Chisel, 12" Handle	\$66.65





In-Depth: The CamVac Range of Dust Extractors

The Versatility to Suit Any Size Workshop

The CamVac range of dust extractors features a wide selection of collection capacities from 36 litres to 200 litres (10 to 53 US Gallons) to cater for everything from the small home workshop to larger industrial and trade settings.



Made in the UK



Acoustic Outlet



Three-Stage Filtration to 0.5 Microns



CamVac machines are probably the quietest High-Pressure-Low-Volume (HPLV) dust extractors available. The acoustic outlet effectively reduces noise during operation, with tests showing sound levels as low as 74 dB on a single motor model. When the optional 2-1/2" hose is fitted to the acoustic outlet, this can be reduced to around 68 dB, making them the ideal option if neighbourhood noise is a concern.

When using the optional hose in the acoustic outlet, noise can be reduced even further by directing the open end of the hose outside the workshop, for example through a window.

The drum filter and motor filters give three-stage filtration for fine dust, using two washable cloth filters and a paper filter system. The extractors filter to as low as 0.5 microns, providing protection against very fine dust.

Cyclonic Inlet



All CamVac models feature a unique cyclonic inlet system, which draws the waste around the sides of drum and away from the filters and motors, increasing their lifespan.

This makes CamVac extractors suitable for collecting coarser items such as wood chippings as well as fine dust, maximising their versatility and usefulness in the workshop.





CamVac Extraction

CGV336-4 Medium Extractor

The CGV336 offers an impressive 55 litre (14½ US Gallons) capacity whilst also being very compact. In addition to wood dust and chippings, it can tackle workshop debris, nails, and many other types of waste with ease and features the CamVac triple filtration system for effective treatment of fine particles. The cyclonic neutral vane theory technology draws the waste into the drum with great force and directs it around the outside edge, keeping the filters cleaner and allowing the waste to fall to the bottom of the drum.

Only \$639.99



Made in the UK



Includes 2 metres (79") of hose and easy-fit cuff

CGV336-4 MEDIUM EXTRACTOR SPECIFICATIONS

Filtration: 0.5 microns	Voltage: 220 V
Air Flow: 108 litres per second (229 CFM)	Inlet: 4"
Capacity: 55 litres / 14½ US Gallons	Weight: 13 kg (29 lbs)
Motor: 2000 W (2.7 HP)	Size: W370 x D412 x H624 mm W14½" x D16¼" x H24½"

CGV386-6 Large Extractor

The CGV386 has an impressive capacity of 90 litres. In addition to wood dust and chippings, it can tackle workshop debris, nails, and many other types of waste with ease and features the CamVac triple filtration system for effective treatment of fine particles. The cyclonic neutral vane theory technology draws the waste into the drum with great force and directs it around the outside edge, keeping the filters cleaner and allowing the waste to fall to the bottom of the drum.

Only \$999.99



Made in the UK



Includes 2 metres (79") of hose and easy-fit cuff

CGV386-6 LARGE EXTRACTOR SPECIFICATIONS

Filtration: 0.5 microns	Voltage: 220 V
Air Flow: 162 litres per second (342 CFM)	Inlet: 4"
Capacity: 90 litres (24 US Gallons)	Weight: 19.5 kg (43 lbs)
Motor: 3000 W (4 HP)	Size: W478 x D520 x H573 mm W18¾" x D20½" x H22½"

Dust Extraction Accessories



CVA250-102 2.5 M (8 ft) Flexible Hose Assembly for 2 1/2" Diameter Systems

- Fits the motor outlets of all CamVac machines and greatly reduces noise. For even further noise reduction when fitted to a dust extractor, the unconnected end can be fed through an outlet in the workshop, such as a window.
- Ideal for use with power tools, using the optional **DX100R63 4" to 2 1/2" Reducer** and **40700 Stepped Power Tool Adaptor**.

\$39.99

Caster Sets



CVA286-27-100
336 Caster Set **\$79.99**
CVA386-27-100
386 Caster Set **\$86.99**

DX100X 100 mm Easy Fit Hose Cuff for Dust Extractors



\$17.99

CVG170-101 Paper Filter Bag (6 per pkt)



\$6.99

DX100R63 4" to 2 1/2" Reducer for 4" Inlet Machines



\$26.99

40700 Stepped Power Tool Adaptor for 2 1/2" Hose



\$15.99

CKV250-100 2.5" Standard Tool Kit



\$79.99



Address: 53032 Perry Rd, Wainfleet, ON
LOS 1V0, Canada

Phone: (877) 287 5017
www.stockroomsupply.ca

Authorized Record Power Specialists