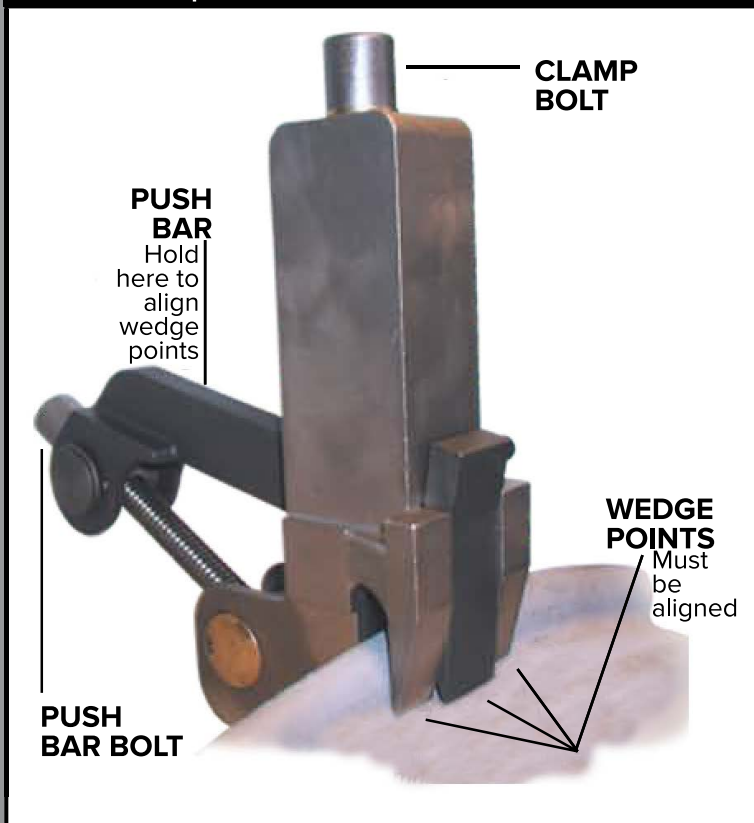


TC-610 BEAD BREAKER

NOTE: Read carefully before using tool. The TC-610 Bead Breaker can be used with either a ½" drive impact tool or ½" ratchet.



OPERATING INSTRUCTIONS

STEP 1

Make sure the clamp bolt & push bar bolt are loose (see diagram). Align the 3 wedge points by holding the bead breaker by the push bar while loosening or tightening the push bar bolt.

STEP 2

Place all 3 wedge points over rim flange with center wedge placed against the tire iron.

TIP: For rear tractor tires, push the wedge into the pry notch. For tires without the pry notch, drive a wedge or tire tool between the tire and the rim to start the bead breaker wedges.

STEP 3

Tighten clamp bolt. It is important that the wedges are tightened all the way to the rim seat so that the push bar can scrape the rim.

NOTE: Do not over tighten, or it can cause damage to the rim.

TIP: Wedge or tire iron used in Step 2 can now be removed.

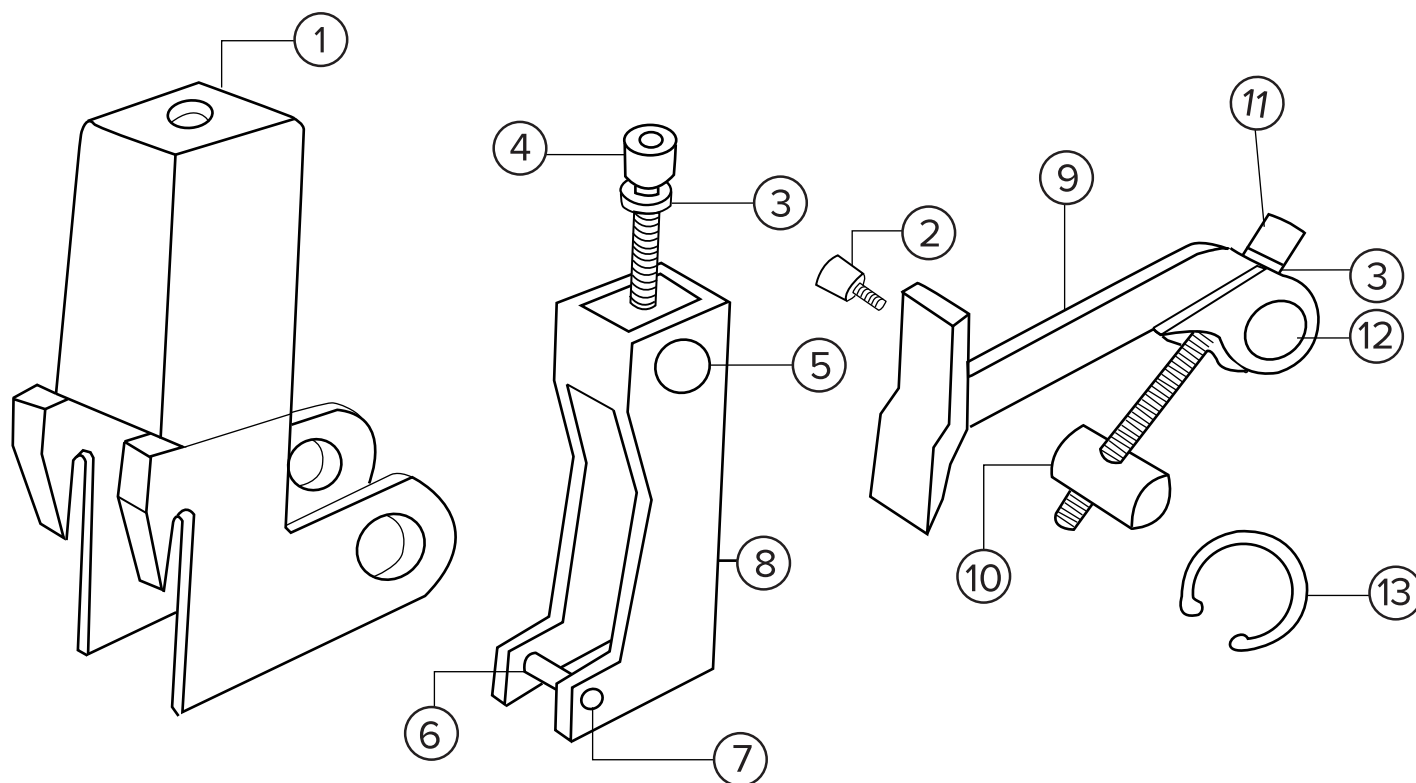
STEP 4

Tightened push bar bolt to break tire bead.

TIP: Important to make sure the wedge point is pushing next to the rim seat as pushing too high can result in damage .



Rev. 04.17.2019



REPAIR PARTS

No.	Description	Part No.	No.	Description	Part No.
1	Main Body	100-102	8.	Clamp	100-109
2.	Cap Screw	100-103	9.	Push Bar	100-110
3.	Thrust Washer	100-104	10.	Push Bar Nut	100-111
4.	Clamp Bolt	100-105	11.	Push Bar Bolt	100-112
5.	Clamp Nut	100-106	12.	Thrust Bar	100-113
6.	Spacer	100-107	13.	Retaining Ring	100-114
7.	Bolt 1/4" x 1 1/2"	100-108			

Order parts from your distributor or jobber.

When ordering parts always give the following information: Part number, description and serial number of your machine.

