

# MAINTENANCE GUIDE

## TIRE CUTTERS



**READ INSTRUCTIONS THOROUGHLY BEFORE OPERATING**



Sept. 05, 2013

**800.223.4540**

3451 S. 40th Street  
Phoenix, AZ 85040  
602.437.5020

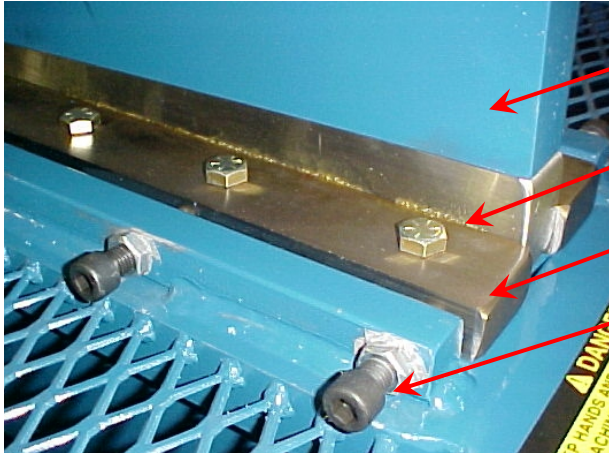
[www.tsissg.com](http://www.tsissg.com)  
[info@tsissg.com](mailto:info@tsissg.com)  
Fax 602.437.5025

MADE IN USA

# SHEAR BAR MAINTENANCE

## CAUTION:

When providing maintenance to any of these machines stay clear of all moving parts.



Male Shear Arm

1/2" Bolts

Female Shear Bar

1/2" Socket Head Screws & Locking Nut

## NOTE:

Extra stress is placed on machine if proper sharpness or adjustment is not maintained.

### Female Shear Bar Adjustment:

As the steel belting from a tire starts to string out and not cut properly the original bar edges will eventually need to be adjusted.

To do this run the unit and stop the Male Shear Arm in position as shown above. Shut off or unplug the unit. (The Shear Bars on a TC-125 model will need to be adjusted in stages. Shut off during each adjustment stage.)

Loosen the 1/2" Bolts on one side of the unit and loosen the Lock Nuts for the Socket Head Screws. Use an Allen Head wrench to adjust the Socket Head Screws to drive the Female Shear Bar securely flush against the Male Shear Arm (do not add force upon it) and tighten the Lock Nuts. Do this for both sides. There should be zero clearance between the Male and Female Shears.

### Changing the Female Shear Bars:

Each Female Shear Bar has 4 available cutting edges. Run the unit and stop the Male Shear Arm in position as shown above. Shut off or unplug the unit.

Remove the 1/2" Bolts from both sides as well as both Female Shear Bars.

Loosen the Locking Nuts and back-out the Socket Head Screws so there's access to clean the mounting surface. Use a putty knife and emery cloth to scrape the mounting surface as clean as possible.

Reposition each Female Shear Bar by choosing a newer edge to use for cutting and loosely replace all the 1/2" Bolts. Make the proper adjustments to align each Female Shear Bar to the Male Shear Arm as stated above.

### Maintaining the Male Cutter Bar:

The Male Cutter Bar may be turned end for end if it shows areas of wear.

After rotating it make sure to readjust the Female Shear Bars as stated above.

# MAINTENANCE INSTRUCTIONS

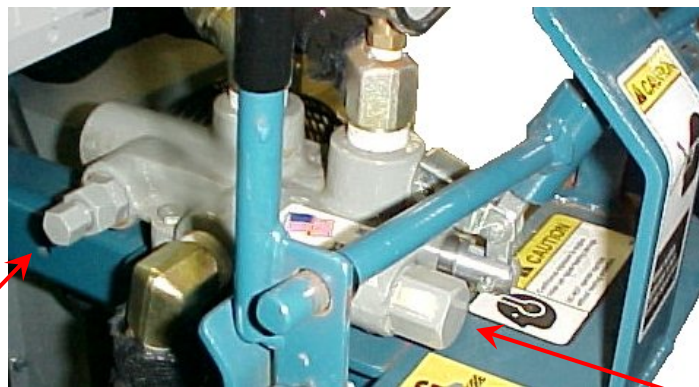
For maintenance shut off engine. Unplug Electric unit from power source.

Follow engine manufacturers recommended maintenance requirements.  
Replace engine oil, oil filter, air filter and gas filter every 6 months.

Replace Hydraulic oil filter element TSI# 10130E every 6 months.

Drain and replace Hydraulic oil from reservoir once per year with SAE 20 or SAE 30 Automatic Transmission Fluid.

Grease unit as indicated: At minimum follow directions as stated on decals.



If valve "kicks out" on the shear arm return stroke, the detent will have to be slightly tightened. Tighten outer nut 1/4 turn and tighten lock nut. Continue to cut. If valve still "kicks out" readjust it another 1/4 turn.

Hydraulic pump pressure at the valve is to read 2600-2800 PSI on the gauge. If pressure adjustment is needed, remove the cap and either loosen or tighten adjusting nut beneath the cap.

[www.tsissg.com](http://www.tsissg.com)

## **TIRE CUTTERS**



**800.223.4540**

3451 S. 40th Street  
Phoenix, AZ 85040  
602.437.5020

[www.tsissg.com](http://www.tsissg.com)  
[info@tsissg.com](mailto:info@tsissg.com)  
Fax 602.437.5025

MADE IN USA