

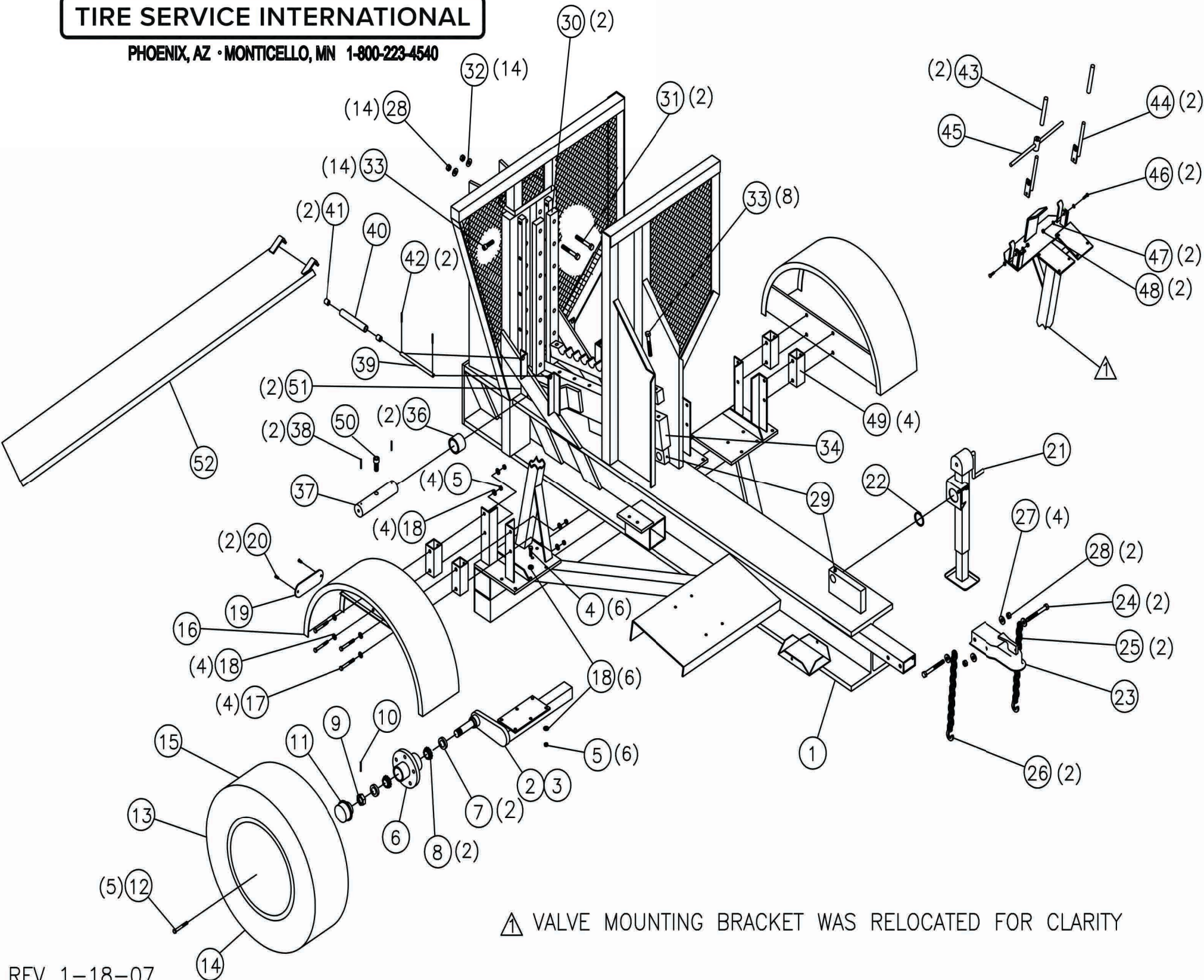


TIRE SERVICE INTERNATIONAL

PHOENIX, AZ • MONTICELLO, MN 1-800-223-4540

TC-100 MAIN ASSEMBLY

BEGINNING SERIAL NO.1251





TIRE SERVICE INTERNATIONAL

PHOENIX, AZ • MONTICELLO, MN 1-800-223-4540

TC-100
 MAIN ASSEMBLY
 BEGINNING SERIAL NO.1251

PARTS LIST

| ITEM | PART NO. | DESCRIPTION | QTY |
|------|----------|-------------------------------------|-----|
| 1 | 5518 | MAIN FRAME WELD | 1 |
| 2 | 3397 | SPINDLE, AXLE R.H. | 1 |
| 3 | 3398 | SPINDLE, AXLE L.H. | 1 |
| 4 | 447 | CAP SCREW, HH 3/8-16 X 1-1/4 | 10 |
| 5 | 212 | NUT, HEX LOCK 3/8-16 | 26 |
| 6 | 3025-1 | WHEEL HUB | 2 |
| 7 | 3025-2 | SEAL, BEARING | 4 |
| 8 | 3025-3 | BEARING, TAPERED | 4 |
| 9 | 3025-4 | NUT, SPINDLE | 2 |
| 10 | 3025-5 | COTTER PIN | 2 |
| 11 | 3025-6 | COVER, HUB | 2 |
| 12 | 3025-7 | LUG BOLT | 10 |
| 13 | 3034 | WHEEL, WHITE SPOKED, 13" | 2 |
| 14 | 3083 | VALVE STEM | 2 |
| 15 | 3084 | TIRE, 185 X 13, 2 PLY BIAS WHT WALL | 2 |
| 16 | 5519 | FENDER WELD ASSY | 2 |
| 17 | 1306 | CAP SCREW, HH 3/8-16 X 1 | 8 |
| 18 | 700 | WASHER, FLAT 3/8 | 8 |
| 19 | 3079 | REFLECTOR | 2 |
| 20 | 1055 | SCREW, SELF TAP #10-24 X 1/2 | 4 |
| 21 | 3023-1 | JACK | 1 |
| 22 | 3023-2 | RETAINING RING | 1 |
| 23 | 3027 | HITCH COUPLER, 2" BALL | 1 |
| 24 | 3060 | CAP SCREW, 1/2-13 X 4-1/2 | 2 |
| 25 | 3081 | CHAIN, SAFETY | 2 |
| 26 | 3082 | CLIP, SAFETY CHAIN | 2 |

PARTS LIST

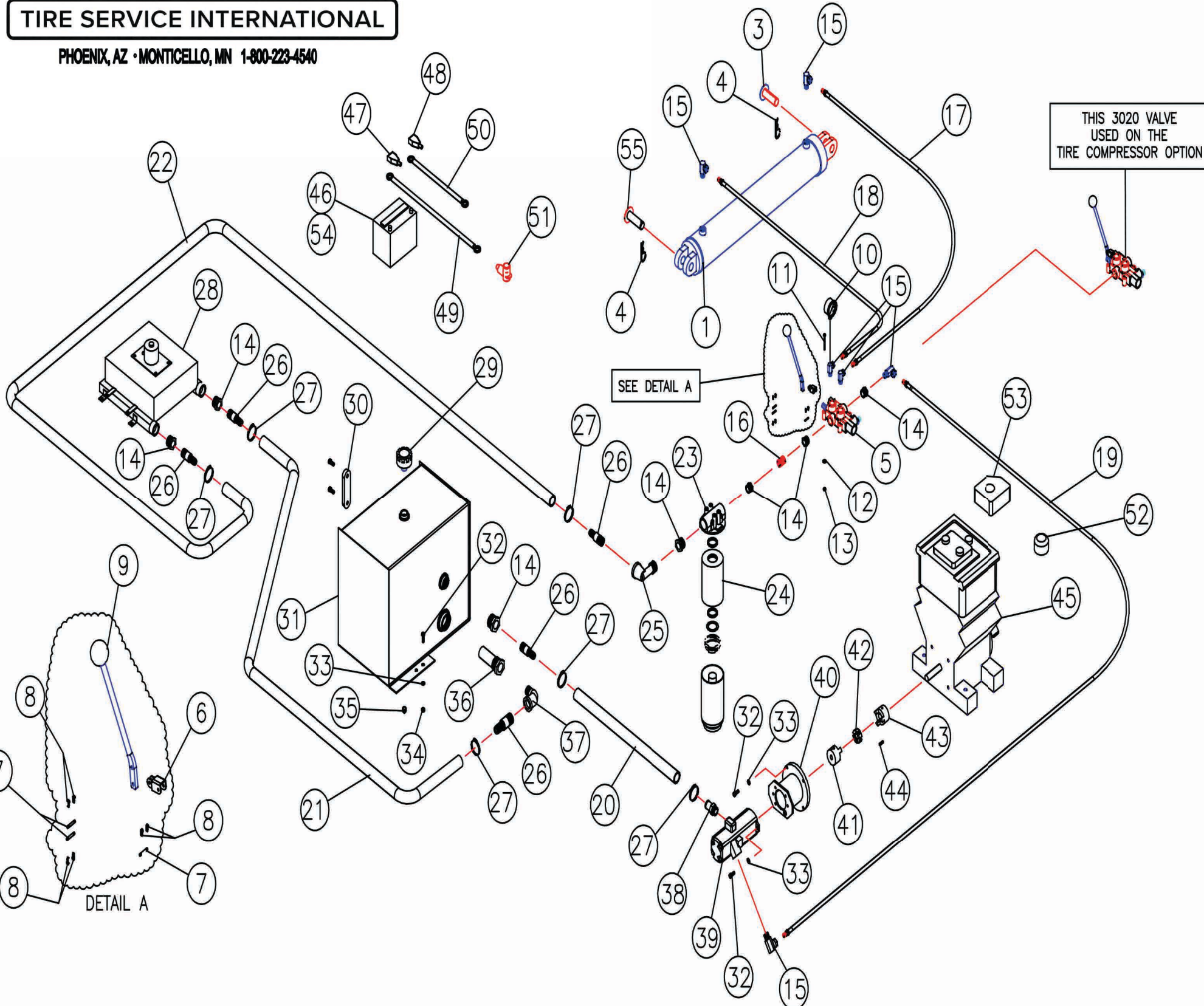
| ITEM | PART NO. | DESCRIPTION | QTY |
|------|----------|--------------------------------------|-----|
| 27 | 224W | WASHER, FLAT 1/2 | 2 |
| 28 | 223 | NUT, HEX LOCK 1/2-13 | 16 |
| 29 | 210 | GREASE ZERK | 4 |
| 30 | 3029 | FEMALE SHEAR BLADE | 2 |
| 31 | 443 | CAP SCREW, HH, 1/2-13 X 3-1/2 | 14 |
| 32 | 224 | WASHER, FLAT 1/2 | 14 |
| 33 | 3042 | CAP SCREW, AL SOC HD, 1/2-13 X 1-3/4 | 18 |
| 34 | 5520 | SHEAR BAR SUPPORT WELD | 1 |
| 35 | 3030 | MALE SHEAR BAR | 1 |
| 36 | 3196 | BUSHING, FULCRUM | 2 |
| 37 | 3072 | PIN, FULCRUM | 1 |
| 38 | 276 | COTTER PIN, 3/16 | 2 |
| 39 | 3113 | SHAFT, ROLLER | 2 |
| 40 | 3112 | ROLLER, TIRE SUPPORT | 2 |
| 41 | 3102 | BEARING ROLLER | 4 |
| 42 | 1436 | COTTER PIN | 4 |
| 43 | 230 | HANDLE GRIP | 2 |
| 44 | 5534 | HANDLE WELD | 2 |
| 45 | 5535 | PIVOT WELD | 1 |
| 46 | 444 | CAP SCREW, HH, 1/4-20 X 1 | 4 |
| 47 | 445 | WASHER, FLAT 1/4 | 9 |
| 48 | 226 | NUT, HEX LOCK 1/4-20 | 4 |
| 49 | 4217 | SPACER, FENDER | 4 |
| 50 | 4860 | CAP SCREW, AL SOC HD 5/8-1 X 2 | 1 |
| 51 | 3065 | ANCHOR, FULCRUM (PIVOT BLOCK) | 2 |
| 52 | 5949 | TIRE RAMP WELDMENT | 1 |



TC-100 HYDRAULIC ASSY 9-21-15

TIRE SERVICE INTERNATIONAL

PHOENIX, AZ • MONTICELLO, MN 1-800-223-4540



THIS 3020 VALVE
USED ON THE
TIRE COMPRESSOR OPTION

SEE DETAIL A

DETAIL A



TIRE SERVICE INTERNATIONAL

PHOENIX, AZ • MONTICELLO, MN 1-800-223-4540

TC-100
HYDRAULIC ASSY
9-21-15

PARTS LIST

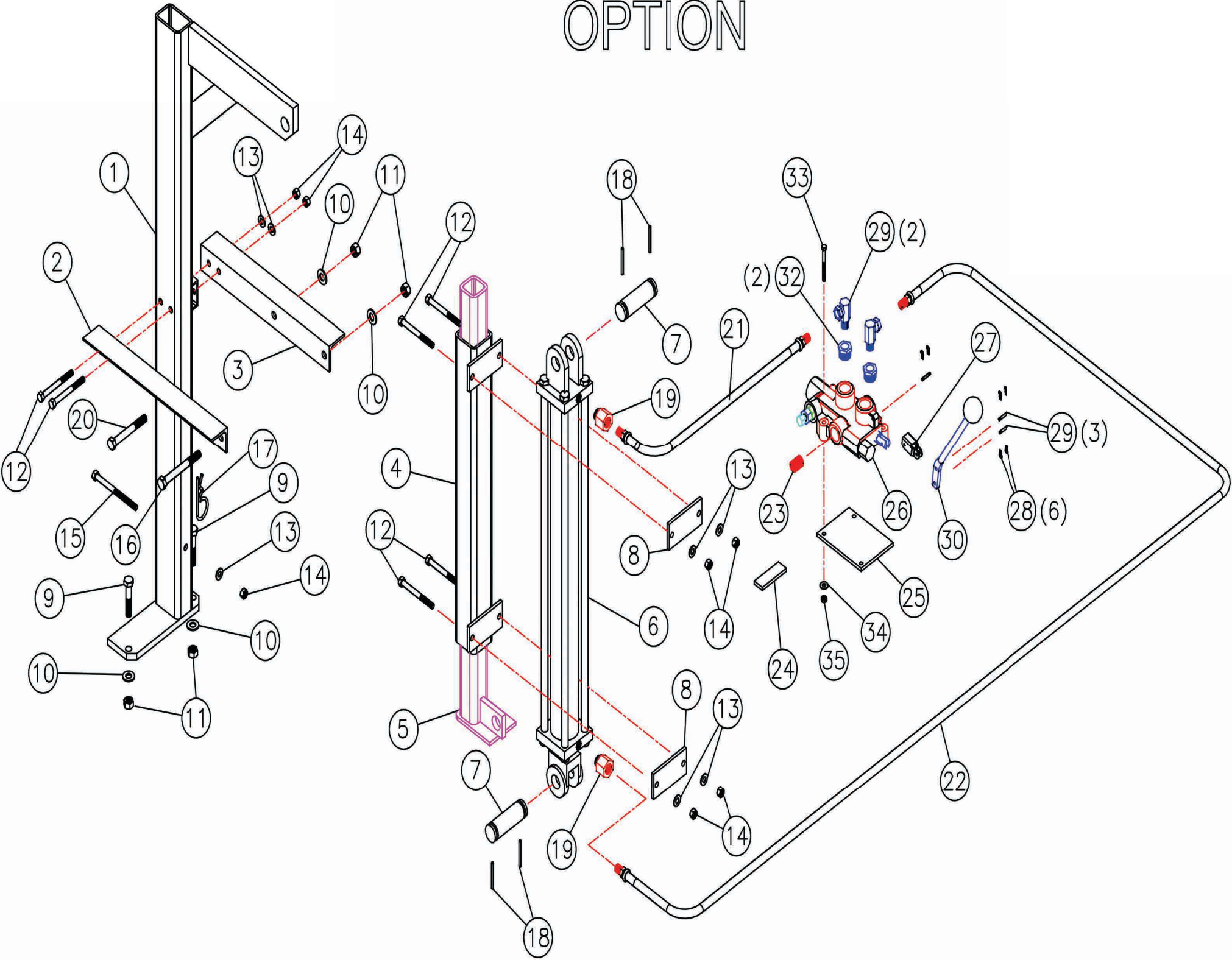
| ITEM | PART NO. | DESCRIPTION | QTY | ITEM | PART NO. | DESCRIPTION | QTY |
|------|----------|---|-----|------|---------------|--|-----|
| 1 | 3022 | CYLINDER, HYDRAULIC 5 X 30 | 1 | 30 | 10171 | SIGHT GAUGE W/THERMOMETER | 1 |
| 2 | 3022R | CYLINDER REPAIR KIT - PRINCE 5 X 30 | 1 | 31 | 5521D | HYDRAULIC OIL RESERVOIR | 1 |
| 3 | 5656 | CYLINDER PIN, FRONT | 1 | 32 | 447 | CAP SCREW H.H. 3/8-16 X 1-1/4 | 10 |
| 4 | 799 | HAIRPIN, COTTER | 2 | 33 | 700 | WASHER, FLAT 3/8" | 10 |
| 5 | 3020-1 | VALVE, HYDRAULIC | 1 | 34 | 212 | NUT, HEX 3/8-16 | 4 |
| 6 | 3020-2 | LINK, VALVE HANDLE | 1 | 35 | 717 | DRAIN PLUG 3/8" | 1 |
| 7 | 3020-3 | PIN, CLEVIS | 3 | 36 | 3009 | SUCTION STRAINER, 2NPT EXT. X 1-1/4NPT | 1 |
| 8 | 3020-4 | PIN, COTTER | 3 | 37 | 3133 | ELBOW, STREET 1"NPT X 90° | 1 |
| 9 | 3020-5 | HANDLE, VALVE | 1 | 38 | 4675 | O-RING FIT, BELL END 1-5/16-12 X 1-1/4 | 1 |
| 10 | 3019 | PRESSURE GAUGE | 1 | 39 | 4571 | PUMP, HYDRAULIC 28 GPM | 1 |
| 11 | 3085 | CAP SCREW, H.H. 1/4-20 X 1-3/4 | 3 | 40 | 3513.50 | MOTOR, PUMP ADAPTER 28 GPM | 1 |
| 12 | 445 | WASHER, FLAT 1/4 | 3 | 41 | 10067 | JAW COUPLING 5/8" | 1 |
| 13 | 226 | NUT, HEX 1/4-20 | 3 | 42 | 4451 | RUBBER INSERT - BLACK RUBBER | 1 |
| 14 | 3138 | REDUCER BUSHING 1-1/4NPT X 1NPT | 6 | 43 | 10066 | CYLINDER, HYDRAULIC 5 X 30 | 1 |
| 15 | 3131 | ELBOW ADAPTER 3/4 X 3/4 X 90° | 6 | 44 | 1492 | KEY, SQUARE 1/4" SQ. X 1" LG. | 1 |
| 16 | 3139 | NIPPLE, CLOSE 1"NPT | 1 | 45 | 4643 | ENGINE, GAS BRIGGS & STRATTON 18HP | 1 |
| 17 | 3400 | HOSE, HYDRAULIC 60" LG. | 1 | 46 | 3033 | BATTERY 12 VOLT | 1 |
| 18 | 3399 | HOSE, HYDRAULIC 30" LG. | 1 | 47 | 10408 | BATTERY POST GUARD BLACK-NEG. | 1 |
| 19 | 3402 | HOSE, HYDRAULIC 50" LG. | 1 | 48 | 10407 | BATTERY POST GUARD RED-POS. | 1 |
| 20 | 3148 | HOSE, HYD. RETURN 1-1/4 I.D. X 40" LG. | 1 | 49 | 3163 | BATTERY CABLE 26" NEG. | 1 |
| 21 | 3148 | HOSE, HYD. RETURN 1-1/4 I.D. X 33" LG. | 1 | 50 | 3162 | BATTERY CABLE 16" POS. | 1 |
| 22 | 3148 | HOSE, HYD. 1-1/4 I.D. X 18" LG. | 1 | 51 | 10664 | RING BOOT, STARTE END | 1 |
| 23 | 10130 | FILTER (COMPLETE UNIT) | 1 | 52 | 492932 (5049) | OIL FILTER (6 cm long) | 1 |
| 24 | 10130E | FILTER ELEMENT (ELEMENT ONLY) | 1 | 53 | 692519 | AIR CLEANER CARTRIDGE (MODEL 380000) | 1 |
| 25 | 3086 | ELBOW, STREET 3/4NPT X 90° | 1 | | 692520 | AIR CLEANER PRE-CLEANER (MODEL 380000) | 1 |
| 26 | 3921 | BARB HOSE FITTING 1-1/4NPT X 1-1/4 I.D. | 5 | 54 | 3155 | RUBBER STRAP 10" | 1 |
| 27 | 3088 | HOSE CLAMP - SIZE 24 | 6 | ** | 3485-2.19 | HYD. HOSE COVER - NYLON (NOT SHOWN) | 1 |
| 28 | 10152 | HYDRAULIC OIL COOLER | 1 | ** | 3020RK | VALVE PACKING KIT (3020 HYD. VALVE) | 1 |
| 29 | 3147 | BREATHER CAP 1"DIA. | 1 | 55 | 3022-1 | PIN, CYLINDER | 1 |



TIRE SERVICE INTERNATIONAL

PHOENIX, AZ • MONTICELLO, MN 1-800-223-4540

TC-100 TIRE COMPRESSOR OPTION





TIRE SERVICE INTERNATIONAL

PHOENIX, AZ • MONTICELLO, MN 1-800-223-4540

TC-100 TIRE COMPRESSOR OPTION

PARTS LIST

| ITEM | PART NO. | DESCRIPTION | QTY |
|------|----------|-----------------------------------|-----|
| 1 | 5521 | FRAME, TIRE COMPRESSOR | 1 |
| 2 | 3111R | ANGLE GUIDE R.H. | 1 |
| 3 | 3111L | ANGLE GUIDE L.H. | 1 |
| 4 | 5523 | OUTER TUBE WELD | 1 |
| 5 | 5522 | FOOT, TIRE SLIDING | 1 |
| 6 | 3396-1 | CYLINDER, HYDRAULIC 2.5 X 24 | 1 |
| 7 | 3396-2 | PIN, CYLINDER | 2 |
| 8 | 3127 | BAR, CLAMP | 2 |
| 9 | 770 | CAP SCREW 1/2-13 X 2-1/2 | 2 |
| 10 | 224 | WASHER, FLAT 1/2" | 4 |
| 11 | 223 | NUT, HEX 1/2-13 | 4 |
| 12 | 378 | CAP SCREW 3/8-16 X 4 | 6 |
| 13 | 1354 | LOCK WASHER 3/8" | 7 |
| 14 | 398 | NUT, HEX 3/8-16 | 7 |
| 15 | 3117 | CAP SCREW 3/8-16 X 6 | 1 |
| 16 | 3080 | CAP SCREW 1/2-13 X 4-1/2 (MOD) | 1 |
| 17 | 799 | HAIRPIN, COTTER | 1 |
| 18 | 276 | COTTER PIN 3/16 X 2 | 4 |
| 19 | 3844 | ADAPTER, HOSE COUPLING | 2 |
| 20 | 366 | CAP SCREW 1/2-13 X 4 | 1 |
| 21 | 3145 | HOSE, 1/2 I.D. X 84" LG. | 1 |
| 22 | 3000 | HOSE, 1/2 I.D. X 60" LG. | 1 |
| 23 | 3135 | NIPPLE, CLOSE 3/4NPT HI PRESSURE | 1 |
| 24 | 10789 | BAR LINK | 1 |
| 25 | 3038 | BRACKET, VALVE MOUNT | 1 |
| 26 | 3020-1 | HYDRAULIC VALVE | 1 |
| 27 | 3020-2 | VALVE, HANDLE LINK | 1 |
| 28 | 3020-3 | COTTER PIN | 6 |
| 29 | 3020-4 | CLEVIS PIN | 3 |
| 30 | 3020-5 | HANDLE | 1 |
| 31 | 3131 | SWIVEL, ELBOW 3/4NPT M X 3/4NPT F | 2 |
| 32 | 125 | REDUCER BUSHING 3/4 X 1/2NPT | 2 |
| 33 | 639 | CAP SCREW 1/4-20 X 2-1/2 | 3 |
| 34 | 1318 | WASHER, FLAT 5/16" | 3 |
| 35 | 226 | NUT, SELF LOCK 1/4-20 | 3 |