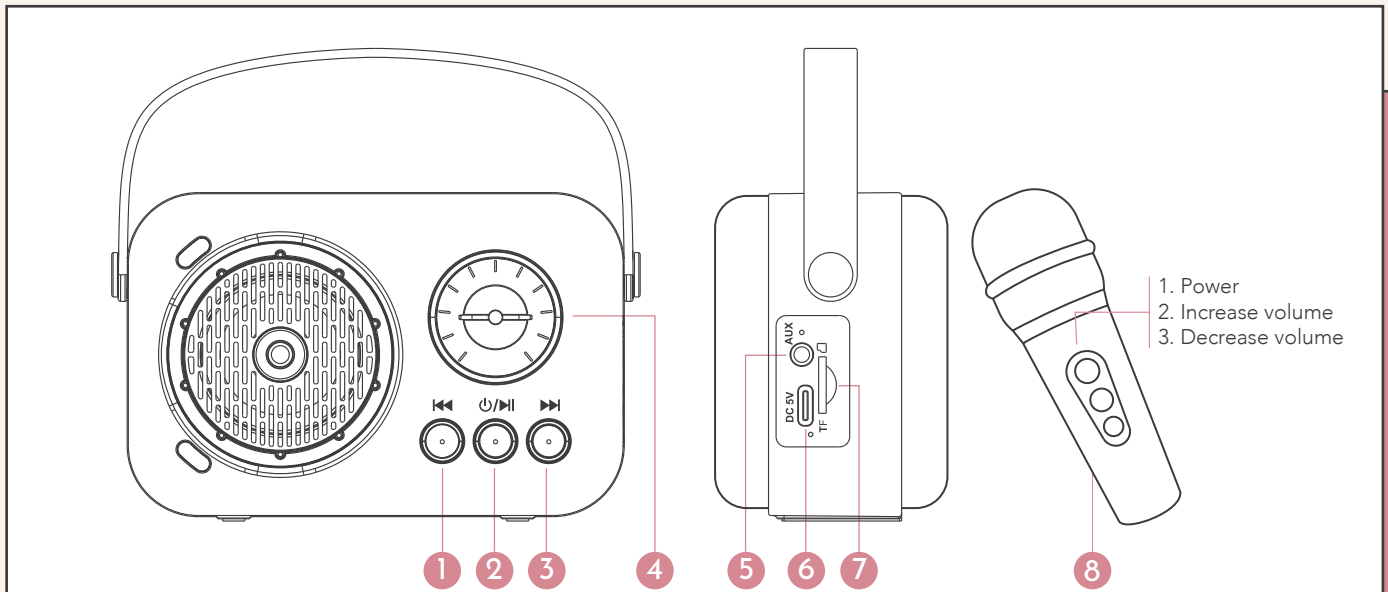




ON-THE-GO MINI KARAOKE KIT

USER MANUAL USER MANUAL USER MANUAL USER MANUAL USER MANUAL



1. Rewind button.

Short press to go to previous song. Long press to rewind.

2. Power/play/pause button.

Long press to turn on/off. Short press to play/pause. Double-click to switch modes.

3. Fast-forward/next button.

Short press for the next song. Long press to fast-forward.

4. Volume knob.

Turn to adjust the volume.

5. AUX external input interface (3.5 mm audio cable)

6. Type-C charging port

7. TF memory card port (Supports up to 64g, MP3/WMA format)

8. Microphone

Long press power button to turn the mic on/off. Short press to switch between voice modes. If both mic and speaker is on, the mic will automatically connect to the speaker.

6 voice modes available

- KTV
- Female-to-male
- Male-to-female
- Acoustic
- Muppet voice
- Baby voice

How to connect to mobile Bluetooth

1. Long-press the Power/play/pause button to turn on the device. This will automatically trigger Bluetooth mode.
2. Turn on Bluetooth on your phone. Connect and pair to the device.
3. Stream music from your phone to the device using your favorite music application.

Device specifications

Bluetooth version	5.0
Charging input	5V-2A
Peak power	10Q
S/N ratio	>75dB
Degree of distortion	1-8%
Frequency response	150Hz-20KHz
Bluetooth connection distance	10M barrier-free

WARNINGS

Use a 5v-2a power adapter.

Do not use the device in high temperatures and humid environments.

When not in use for a long time, we recommend fully charging the machine before use.

Do not use the device in situations where the use of wireless devices is prohibited.

Still have questions?
E-mail us at support@multitasky.com!