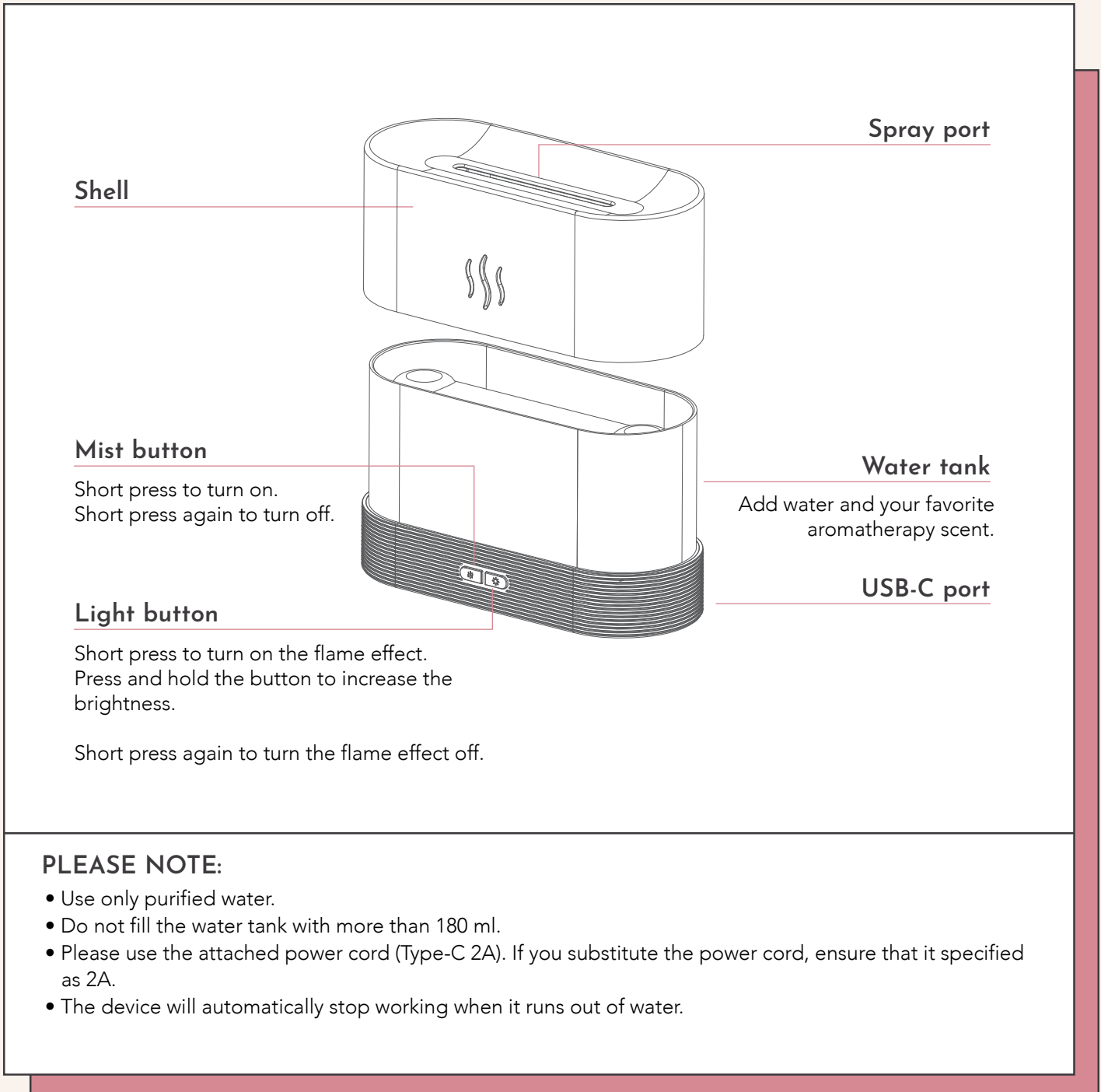




# FIREPLACE FLAME-EFFECT HUMIDIFIER LAMP

USER MANUAL USER MANUAL USER MANUAL USER MANUAL USER MANUAL



**Shell**

**Spray port**

**Mist button**

Short press to turn on.  
Short press again to turn off.

**Water tank**

Add water and your favorite aromatherapy scent.

**Light button**

Short press to turn on the flame effect.  
Press and hold the button to increase the brightness.

**USB-C port**

Short press again to turn the flame effect off.

## PLEASE NOTE:

- Use only purified water.
- Do not fill the water tank with more than 180 ml.
- Please use the attached power cord (Type-C 2A). If you substitute the power cord, ensure that it specified as 2A.
- The device will automatically stop working when it runs out of water.