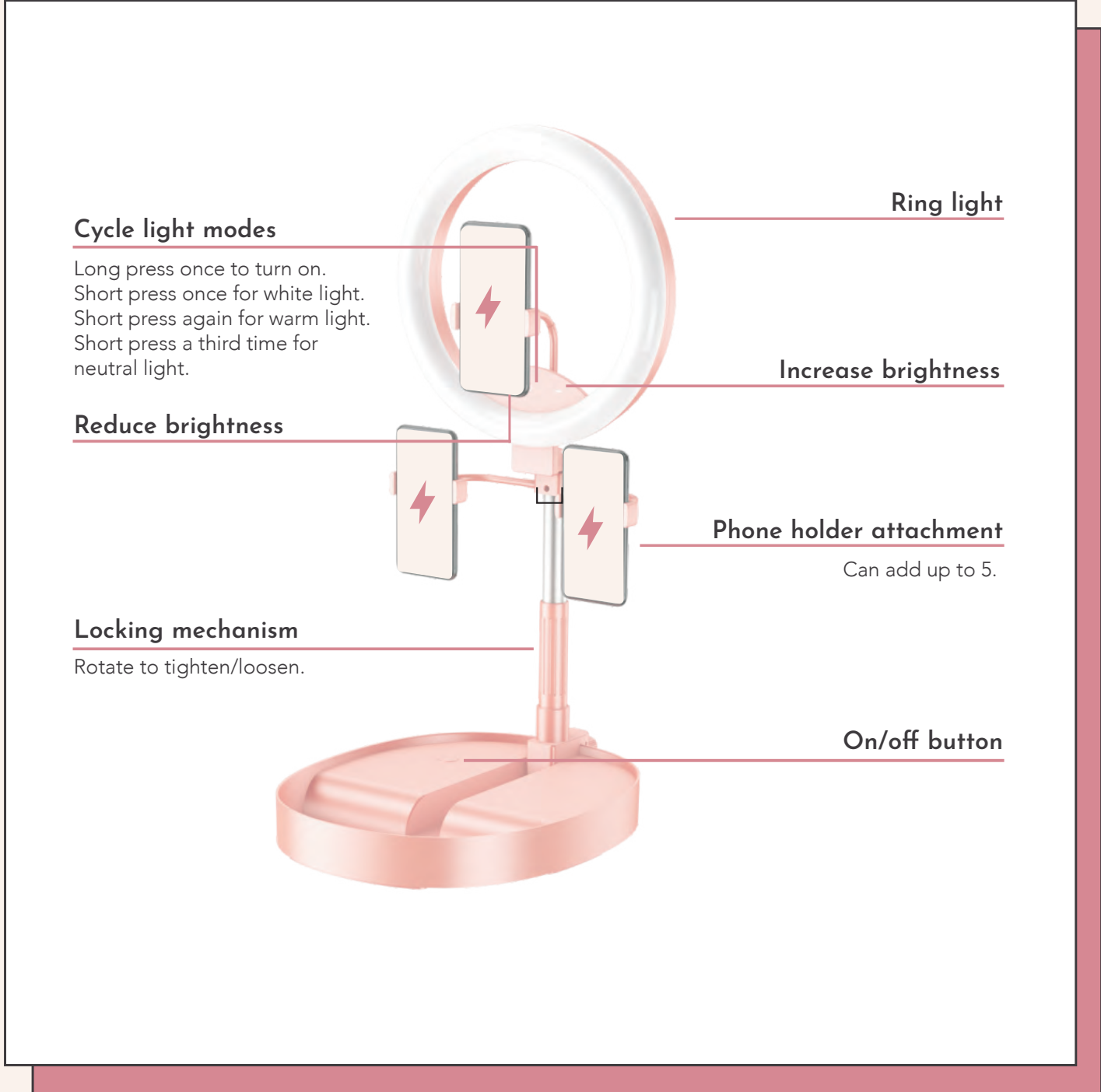




# RECHARGEABLE DELUXE RING LIGHT PRO

USER MANUAL USER MANUAL USER MANUAL USER MAN



### Cycle light modes

Long press once to turn on.  
Short press once for white light.  
Short press again for warm light.  
Short press a third time for neutral light.

### Reduce brightness

### Locking mechanism

Rotate to tighten/loosen.

Ring light

Increase brightness

Phone holder attachment

Can add up to 5.

On/off button



### 1) Set Up

Pull up the ring light vertically to desired height (max height 5'10" / 180cm), insert the bottom clamp fully into the bottom disk, and tighten the round bolt at the back. (Optional: place sandbags on the metal pull out bar at the back for extra security).

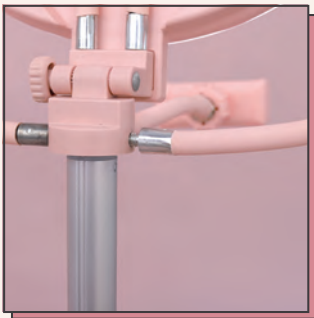


### 5) Turn On

Press and hold down the power button to turn on the ring light

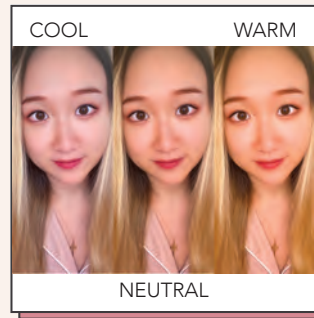
### 6) Adjust Brightness

Press the + and - signs to adjust brightness.



### 2) Adjust Ring Light

Adjust the ring light to desired angle, then tighten the small knob on the side of the ring light to secure the position (the ring light can be flipped 180 degrees backwards).



### 7) Change Light Modes

Lightly press the power button quickly to cycle through cold, neutral, and warm light modes.



### 3) Add Phone Holder(s)

Screw in the phone holders to desired location (middle, left, or right). Stretch the phone holder clamp and attach your phone into the phone holder. (Optional: add up to 5 phone holders - available to purchase as add-ons).



### 8) Transform into long curve light (optional)

Detach the top half and reattach it to one side. (Optional: attach an additional ring light half to another side of the ring light to extend it to a long curve light - available to purchase as an add-on).



### 4) Charge

Plug the USB-C head into the ring light, then the USB head into a power source to charge the ring light.



### 9) Turn Off

Press and hold down the power button again to turn off the ring light. Unscrew and remove the phone holder. Loosen both ring light side knob and bottom bolt to fold up the ring light for easy storage.