



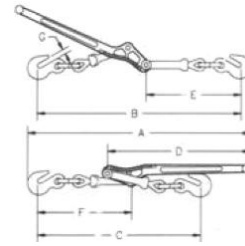
LASHING EQUIPMENT

Lever Load Binders.....	16
Ratchet Binders.....	17 - 18 - 19
Tie Down Cargo Straps.....	19
Truck Winch & Weld-On D-Rings	20
Ratchet Straps	21
Ratchet Buckles	22
Tie Down Webbing & Wire J Hooks.....	23

LOADBINDER - LEVER

Ball & Socket swivel joint at hook assembly permits a straight line pull
 Before use, oil ball & socket for longer life

- Material: Forged Steel, Quenched & Tempered
- Standard: EN 12195-3
- Finish: Painted Yellow
- Design Factor: 3.5:1
- Identification: Trademark, Size/WLL, Batch Code



Chain Size (in)	WLL (lb)	Ult. Tension (lb)	Weight (lb)	Inside Measures (in)							Qty./ Box	Price / ea.	Part Number
				A	B	C	D	E	F	G			
1/4 - 5/16	2600	9100	3.3	18.50	17.18	14.43	11.50	8.25	8.12	0.37	10	41.66	6-1/4-5/16LB
5/16 - 3/8	5400	19 250	7.02	24.13	22.13	17.88	16.00	10.38	10.38	0.50	5	55.60	6-5/16-3/8LB
3/8 - 1/2	9200	33 000	12.47	28.75	25.75	21.25	18.69	12.31	12.38	0.63	5	98.13	6-3/8-1/2LB

LOADBINDER - LEVER, BX

BX-600 / BX-800

Load Binder Lever with Kickback Resistance

Ball & Socket swivel joining at hook assembly permits a straight line pull.
 Before use, oil ball & socket for longer life.

- Material: Forged Steel, Quenched & Tempered
- Standard: EN 12195-3
- Finish: Painted Yellow
- Design Factor: 3.5:1
- Identification: Trademark, Size/WLL, Batch Code



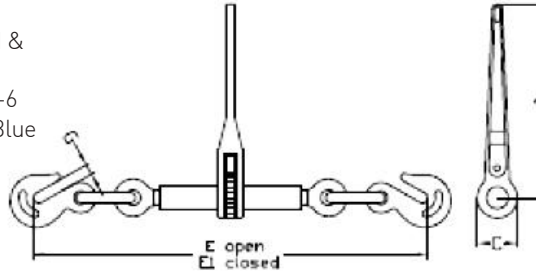
Binder Number	Chain Size (in)	WLL (lb)	Lever Length (in)	Take up (in)	Weight (lb)	Qty./ Box	Price / ea.	Part Number
BX-600	5/16	4700	12-1/2	4-1/2	8.6	5	78.95	6-BX600
BX-600	3/8	5400						
BX-800	3/8	6600	16	4-1/2	13.4	4	118.15	6-BX800
BX-800	1/2	9200						

Failure to use binders properly may result in serious injury or death. DO NOT operate load binder while standing on the load. Keep yourself out of the path of the moving handle and loose chain lying on the handle. You must be familiar with regulations regarding size and number of chain systems required for securing loads. Always consider the safety of nearby workers as well as yourself when using load binder. While under tension, load binder must not bear against an object, as this will cause side load. Do not use handle extender. Do not attempt to open or close the binder with more than one person.

LOADBINDER - RATCHET, HS

Matches the Working Load Limit of Grade 100 Chain for both sizes

- Material: Forged Steel, Quenched & Tempered, Gr 100
- Standard: EN 12195-3, WSTDA-T-6
- Finish: Powder Coated Yellow & Blue
- Design Factor: 3:1
- Identification: Trademark, Size/WLL, Batch Code

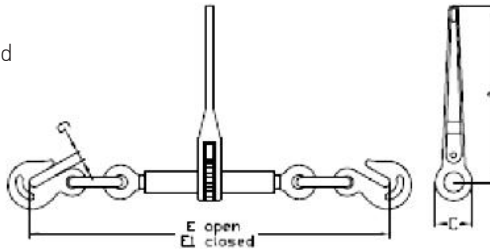


Chain Size (in)	WLL (lb)	Proof Load (lb)	Weight (lb)	Dimensions (in)					Qty. / box	Price / ea.	Part Number
				A	C	E1	E	G			
5/16 - 3/8	8800	17 600	10.95	13.98	2.56	23.54	29.88	0.50	4	90.22	6-5/16-3/8RBHS
3/8 - 1/2	15 000	30 000	11.69	13.98	2.56	24.75	30.95	0.65	5	99.60	6-3/8-1/2RBHS

- Meets or exceeds DOT and CVSA Cargo Securement Tie-Down Guideline

LOADBINDER - RATCHET

- Material: Forged Alloy Steel, Quenched & Tempered
- Standard: EN 12195-3, WSTDA-T-6
- Finish: Painted Yellow
- Design Factor: 3.5:1
- Identification: Trademark, Size/WLL, Batch Code



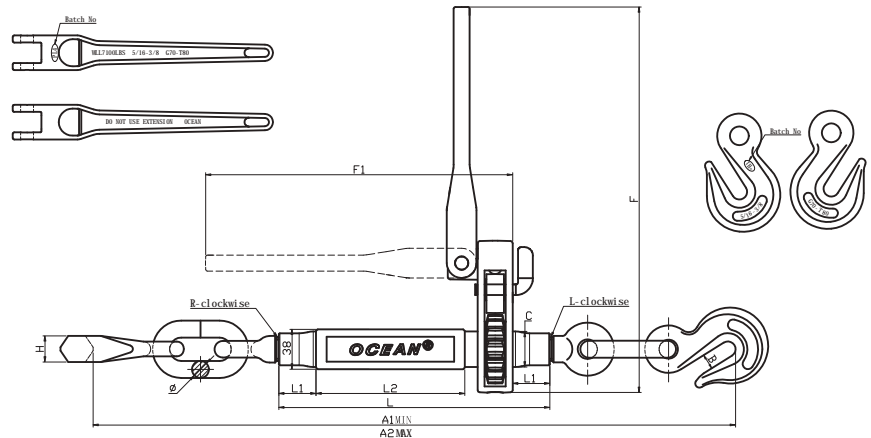
Chain Size (in)	WLL (lb)	Proof Load (lb)	Weight each (lb)	Dimensions (in)					Pcs / box	Price / ea.	Part Number
				A	C	E1	E	G			
5/16 - 3/8	6600	13 200	10.56	13.98	2.56	23.54	29.88	0.50	5	78.05	6-5/16-3/8RB
3/8 - 1/2	9200	18 400	11.24	13.98	2.56	23.74	30.24	0.65	5	83.24	6-3/8-1/2RB
1/2 - 5/8	13 000	26 000	15.83	13.98	2.56	27.17	33.86	0.73	4	94.95	6-1/2-5/8RB
5/8 - 3/4	20 000	40 000	28.60	13.98	2.56	29.29	31.61	0.93	2	278.10	6-5/8-3/4RB

Failure to use binders properly may result in serious injury or death. DO NOT operate load binder while standing on the load. Keep yourself out of the path of the moving handle and loose chain lying on the handle. You must be familiar with regulations regarding size and number of chain systems required for securing loads. Always consider the safety of nearby workers as well as yourself when using load binder. While under tension, load binder must not bear against an object, as this will cause side load. Do not use handle extender. Do not attempt to open or close the binder with more than one person.

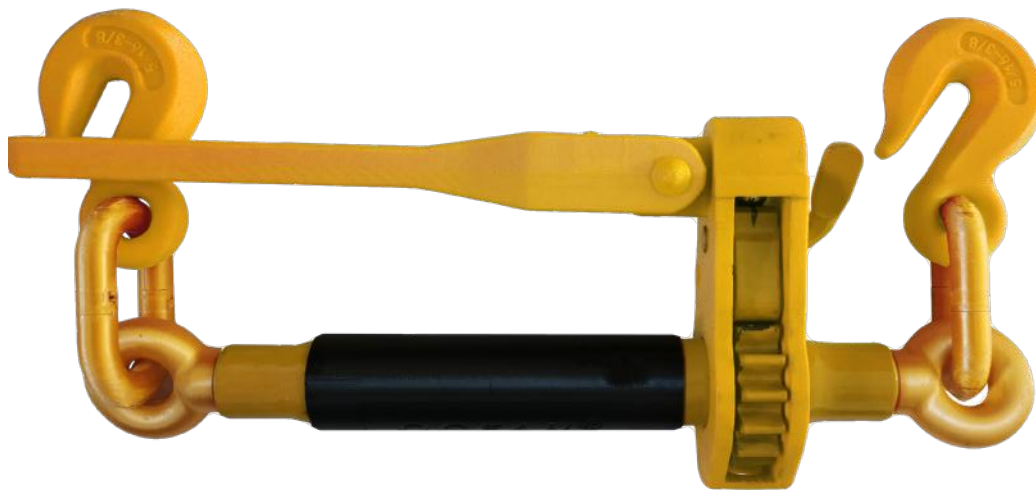
NEW LOADBINDER - FOLDING BINDER - RATCHET

Not available until April 2024

- Material: Forged Alloy Steel, Quenched & Tempered
- Standard: EN 12195-3, WSTDA-T-6
- Finish: Painted Yellow
- Design Factor: 4:1
- Identification: Trademark, Size/WLL, Batch Code



Chain Size (in)	WLL (lb)	Proof Load (lb)	Weight (lb)	Dimensions (in)											Qty. / Box	Price / ea.	Part Number
				B	C	L	L1	L2	F	F1	Φ	H	A1	A2			
5/16-3/8	7100	14200	11.24	0.51	1.34	10.04	1.38	5.51	14.25	11.22	0.55	0.89	22.64	28.94	4	88.47	6-5/16-3/8FB
3/8-1/2	12000	24000	13.00	0.67	1.34	10.04	1.38	5.51	14.25	11.22	0.63	0.96	23.43	29.92	4	103.42	6-3/8-1/2FB
1/2-5/8	18100	36200	16.09	0.75	1.44	10.24	1.38	5.51	14.25	11.22	0.79	1.12	26.38	32.87	2	155.42	6-1/2-5/8FB

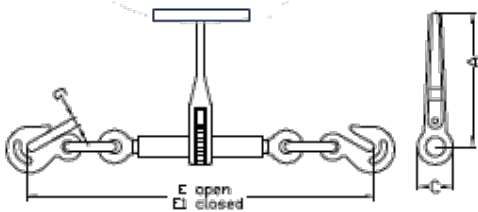


Failure to use binders properly may result in serious injury or death. DO NOT operate load binder while standing on the load. Keep yourself out of the path of the moving handle and loose chain lying on the handle. You must be familiar with regulations regarding size and number of chain systems required for securing loads. Always consider the safety of nearby workers as well as yourself when using load binder. While under tension, load binder must not bear against an object, as this will cause side load. Do not use handle extender. Do not attempt to open or close the binder with more than one person.

LOADBINDER - RATCHET, T-HANDLE

Matches the Working Load Limit of Grade 100 Chain

- Material: Forged Steel, Quenched & Tempered
- Standard: EN 12195-3, WSTDA-T-6
- Finish: Painted Yellow & Blue
- Design Factor: 3:1
- Identification: Trademark, Size/WLL



Chain Size (in)	WLL (lb)	Proof Load (lb)	Weight each (lb)	Dimensions (in)					Pcs / box	Price / ea.	Part Number
				A	C	E1	E	G			
5/16 - 3/8	8800	17 600	12.30	8.86	2.56	22.64	28.94	0.50	4	110.69	6-5/16-3/8RBHST

Failure to use binders properly may result in serious injury or death. DO NOT operate load binder while standing on the load. Keep yourself out of the path of the moving handle and loose chain lying on the handle. You must be familiar with regulations regarding size and number of chain systems required for securing loads. Always consider the safety of nearby workers as well as yourself when using load binder. While under tension, load binder must not bear against an object, as this will cause side load. Do not use handle extender. Do not attempt to open or close the binder with more than one person.

TIE DOWN CARGO STRAP - CHAIN ASSEMBLY

- Material: Grade 70, Carbon Steel, Polyester
- Standard: EN 12195-2,3,WSTDA-T-1
- Finish: UV Protection, Yellow Chromate
- Design Factor: 3:1
- Identification: Trademark, Size/WLL



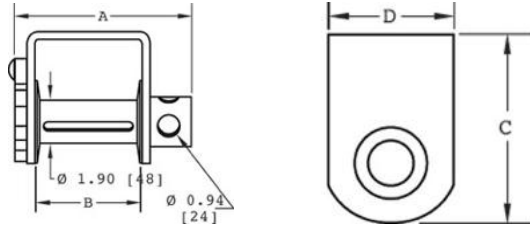
Size		WLL (lb)	Price / ea.	Part Number
Width (in)	Length (ft)			
3	30	5400	42.12	126-3"X30"WC

Compliant with National Safety Code Standard (NSC) 10 Part 1, Division 3, Section 11 (4)

“On and after January 1, 2011 a person shall not use a tie down or a component of a tie downtown secure cargo to a vehicle unless it is marked by the manufacturer with respect to its working load limit.”

WINCH - TRUCK, #5820

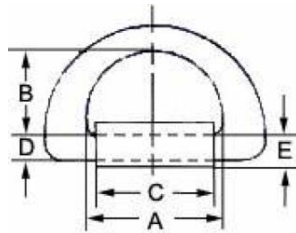
- Designed for use with 3" strapping
- Material: Steel Plate
- Finish: Black Painted
- Design Factor: 3:1



Type	Dimensions (in)				Weight (lb)	Price / ea.	Part Number
	A	B	C	D			
#5820	7.75	4.88	7.58	4.00	10.7	63.40	6-#5820TW

RING - WELD-ON D-RING TIE DOWN

- Rated in Metric Ton(s)



Size (mm)	MBS (t)	Dimensions (mm)					Weight (kg)	Price / ea.	Part Number
		A	B	C	D	E			
27	50	155	90	130	27	32	4.41	97.90	6-DRING

TIE DOWN CARGO STRAP - RATCHET

- **WLL marked along entire length of webbing.**
- Material: Grade 70, Carbon Steel, Polyester
- Standard: EN 12195-2,3, WSTDA-T-1
- Finish: UV Protection, Yellow Chromate
- Design Factor: 3:1
- Identification: Trademark, Size/WLL



Size		MBS (lb)	WLL (lb)	Price / ea.	Part Number
Width (in)	Length (ft)				
2	10	10 000	3335	20.74	126-2"X10'RWH
2	15	10 000	3335	22.55	126-2"X15'RWH
2	20	10 000	3335	24.32	126-2"X20'RWH
2	25	10 000	3335	26.10	126-2"X25'RWH
2	30	10 000	3335	29.05	126-2"X30'RWH

TIE DOWN CARGO STRAP - RATCHET

- **WLL marked along entire length of webbing.**
- Material: Grade 70, Carbon Steel, Polyester
- Standard: EN 12195-2,3, WSTDA-T-1
- Finish: UV Protection, Yellow Chromate
- Design Factor: 3:1
- Identification: Trademark, Size/WLL



Size		MBS (lb)	WLL (lb)	Price / ea.	Part Number
Width (in)	Length (ft)				
3	20	16 200	5400	73.00	126-3"X20' RWH
3	30	16 200	5400	80.76	126-3"X30'RWH

BUCKLE - RATCHET

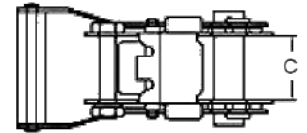
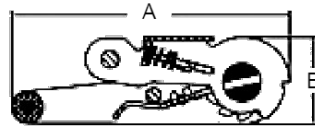
- Material: 304 Stainless Steel
- Finish: Stainless Steel



For Webbing (in)	MBS (lb)	Price / ea.	Part Number
1	3300	24.80	6-1"SSRB
2	6600	66.52	6-2"SSRB

BUCKLE - RATCHET

- Finish: Zinc plated



190-1-1/16"RB



190-1-1/2"RB



190-2"RB



190-3"RB

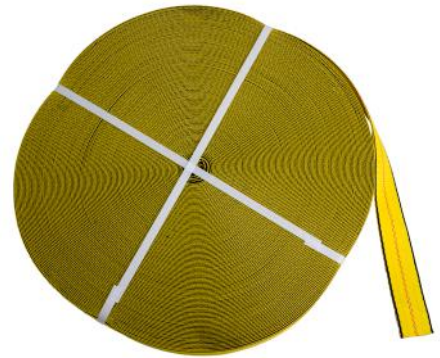


190-4"RB

Pictures are for illustration only, actual product may differ.

For Webbing (in)	MBS (lb)	Dimensions (mm)			Price / ea.	Part Number
		A	B	C		
1	3300	130	42	36	5.50	190-1-1/16"RB
1	6600	155	49	40	11.60	190-1-1/2"RB
2	12 000	230	57	52	11.90	190-2"RB
3	22 000	320	80	78	42.50	190-3"RB
4	22 000	320	80	102	54.65	190-4"RB

WEBBING - TIE DOWN MATERIAL, POLYESTER



Size (in)	MBS (lb)	Carton Packaging Qty (ft)	Price / Reel	Part Number
1	3300	328.08	41.05	190-1"TDW3300
1	6600	328.08	80.60	190-1"TDW6600
2	12 000	328.08	160.00	190-2"TDW12000
3	18 000	328.08	245.00	190-3"TDW18000
4	24 000	328.08	350.00	190-4"TDW24000



HOOK - WIRE, DOUBLE J

Size (in)	MBS (lb)	Dimensions (mm)			Price / ea.	Part Number
		A	B	C		
1 1/16	3300	27	7	56	0.75	190-1-1/16"WH
1 1/2	6600	36	9.3	60	1.75	190-1-1/2"WH
2	12 000	52	11.4	86	2.35	190-2"WH
3	22 000	76	16	130	7.75	190-3"WH
4	22 000	102	16	130	9.85	190-4"WH

