



NEW coastline®

Beautifully weatherproof lightweight composite cladding that's easy to install



**TRADE
SUPERSTORE
ONLINE®**



coastline®

THE NEXT GENERATION LIGHTWEIGHT COMPOSITE CLADDING

At Trade Superstore Online, we're always looking at new ways to bring you even better products. And here's our latest.

It's called Coastline. An innovative composite cladding system that lifts the appearance of any property and adds up to 10 years of guaranteed weatherproof performance to every exterior.

A breakthrough in materials technology

Of course, dry fix cladding is nothing new. Eurocell already offers a wide range of PVC-U designs in over 15 colours. But Coastline is different.

It's made from a unique new composite material that means it's incredibly resilient, yet amazingly easy to work with and fit.

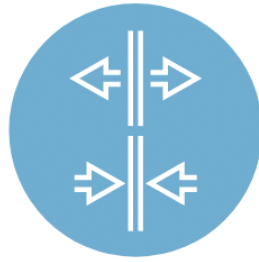
What's really revolutionary though is that Coastline has minimal contraction or expansion, whatever the weather conditions. That's great for householders, who can look forward to living in a home that's protected from the elements trouble-free for the next 10 years. It's great for you because Coastline is lightweight, easier to lift and handle than cement boards and needs no other trades on site to get the job done. And minimal expansion means no rectification visits.

Front Cover Image: Coastline in Soft Green

WHY CHOOSE COASTLINE?



**Patented
composite material**



**Minimal
expansion/contraction**



**Sustainably
sourced composite,
100% recyclable**



**BBA certified
& fire tested to
BS EN 13501-1**



**Premium embossed
woodgrain finish**



**Available in six
through colour
options**



**Lightweight and easy
to install. No wet trades
or adhesives needed**



**10-year
guarantee for
peace of mind**

Custom fixing system

Time is money, and Coastline's specially developed aluminium rail and fixing system helps you make more of both. It provides rapid, secure fixing, every time.

Because there's no mortar or render involved, you can fit it in all weathers. And because it's much lighter than fibre cement cladding products, it won't stress exterior walls or threaten their structural integrity.

More colours, more opportunities

With the new range of Coastline cladding now available in six through-colours, you can also offer to upgrade your customer's roofline in a range of complementary colours.

Coastline in Oyster

The case for Coastline

Once, if you wanted to be sure your exterior cladding was really weatherproof, you had the option of timber boards – good looking, but high maintenance – or cement board. Durable, but difficult and dusty to work with.

A unique new material

Newer, lightweight PVC-U and foam cladding have made things easier, of course.

But because of expansion and contraction as they heat up and cool down, an extra membrane is often needed. And that can make the job more complex and time consuming.

So Coastline, with its unique composite formulation with reduced thermal expansion and contraction as the temperature varies, is a true breakthrough. Plus, it's guaranteed to go on performing with little movement and practically no maintenance for at least 10 years.



INTERLOCKING
MECHANISM

coastline®

NEXT-GENERATION CLADDING

Coastline in Moondust Grey



PREMIUM MATT EMBOSSED WOODGRAIN SKIN

LIGHTWEIGHT COMPOSITE
CONSTRUCTION

coastline®

NEXT-GENERATION CLADDING

The durability you demand

The secret to Coastline's hard wearing, long lasting looks and performance is its innovative composite structure – a patented triple composite of polymer resins, inorganic minerals and acrylic colorants that is extruded to give excellent dimensional strength and stability.

With no wood fibres or any other organic material included, it will never absorb moisture, never rot and never attract insects that could damage its fabric.

That makes it especially robust, even in the most extreme weather conditions. Coastline has excellent wind, hail and impact resistance, and even if it does pick up minor bumps and scrapes, they'll be practically invisible from the kerbside because of its fade-resistant, through colour formulation – unlike cement boards.

Even after years of service it never needs painting or treating, and all it takes to bring it back to its brilliant best is the occasional clean with a garden hose.



Independently fire tested
in the UK (2018) by
Exova Warringtonfire

*** Coastline cladding is designed for use on buildings with a maximum of three storeys and at least 1 metre from boundaries. Failure to install Coastline in accordance to these instructions will invalidate the Product Guarantee.**



coastline®

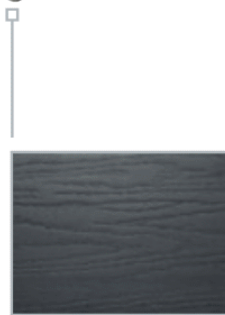
IN SIX NEW ENGLAND COLOURS

Good looking

Coastline doesn't just protect and preserve the fabric of the building. It does it in true style, with a range of 6 attractive New England colours*: Anthracite Grey, Moondust Grey, Pigeon Blue, Oyster, Soft Green and Taupe. More than enough choice to create the look your customers are after.

Individual Coastline panels butt together in exactly the same way as timber panels, with a natural, embossed wood cladding finish to complete the authentic timber facade effect.

Perfect for all kinds of jobs, from new build to refurbishments to park homes that have to fit in with the shades of the countryside around them to tired old brick exteriors in need of a facelift.



Anthracite Grey
GY1



Pigeon Blue
PB



Moondust Grey
GY3



Taupe
TP



Soft Green
SG



Oyster
OW

COLOUR CODED TRIMS

TO COMPLETE YOUR INSTALLATION

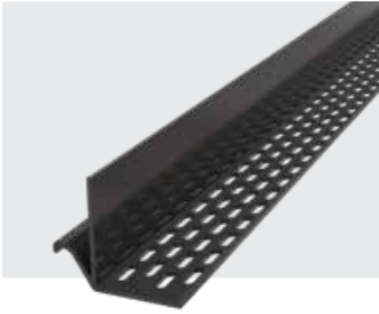
Coastline is supplied with a full range of colour co-ordinated, full powder coated aluminium trims and end closers to protect reveals, corners and stop ends and add an attractive, professional finish to exterior edges.



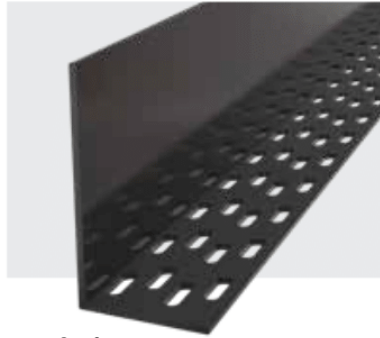
Cladding board 5m

Available in all colours | CL 200

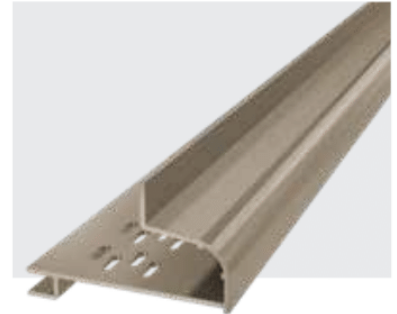
ALUMINIUM TRIM SYSTEM



Starter bar 5m
Black | CL 001BK



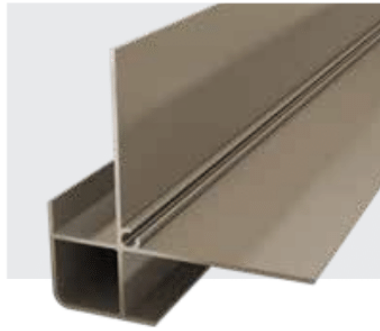
Head trim 5m
Black | CL 002BK



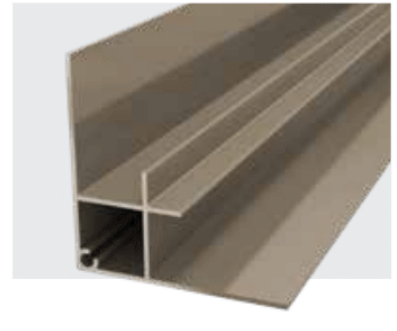
Window head trim 5m
Available in all colours | CL 003



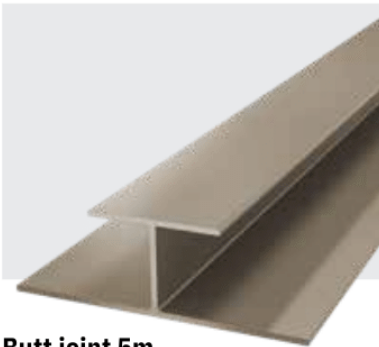
End closer 5m
Available in all colours | CL 004



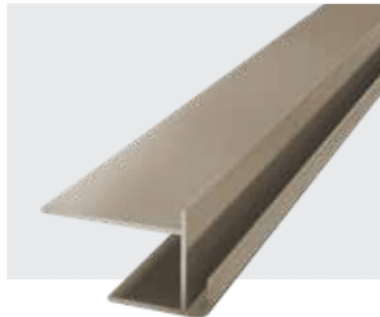
90° External corner 5m
Available in all colours | CL 005



90° Internal corner 5m
Available in all colours | CL 006



Butt joint 5m
Available in all colours | CL 007



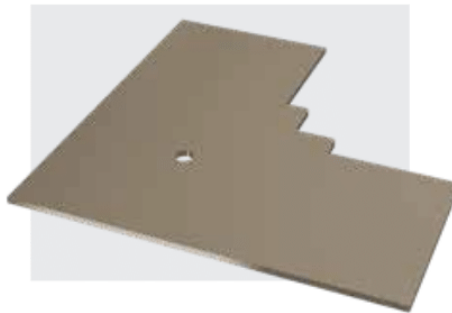
Window reveal corner trim 5m
Available in all colours | CL 008



Window reveal trim 5m
Available in all colours | CL 009



90° External corner end closer
Available in all colours | CL025



90° Internal corner end closer
Available in all colours | CL 026



Window head trim end closer
Available in all colours | CL 023

Our priority has always been the safety of our products, for those who install them and those who live with them in their homes. Coastline is no different.

With the fire safety of exterior cladding under constant scrutiny, Coastline has been rigorously tested for hundreds of hours. This includes fire performance testing in the UK to BS EN 13501 by Exova Warringtonfire, an independent leading authority in fire testing. Certification means that Coastline conforms to British and European standards in Reaction to Fire and Single Flame Combustibility tests and is certified for use as an exterior wall cladding in all approved applications.*

In common with the entire Trade Superstore Online range of products, sustainability and low environmental impact are built into the Coastline lightweight composite cladding from the outset.

FIRE SAFE PERFORMANCE

UK TESTED (2018) TO BS EN 13501



**10
YEAR
PERFORMANCE
GUARANTEE**

FAST, ACCURATE INSTALLATION

WITH INTEGRAL SUSTAINABILITY

Coastline is fast and easy to install and has been designed with a simple interlocking mechanism that fixes to standard timber battens with no membranes required (when installed with the aluminium butt joint trim). Quality co-ordinating aluminium trims and end closers are available to create a perfect finish in every installation. Silicone sealants are also available in complementary colours in order to complete the job.

All the materials used in its manufacture are 100% recyclable. Because it's made from such a durable, long lasting composite, it never needs painting or treating with preservatives, both of which can contain volatile chemicals that can be harmful to the environment.

Unlike cement board, cutting Coastline panels to length releases no harmful silica dust, which has been linked to several serious respiratory diseases, including lung cancer.

DOWNLOAD YOUR INSTALLATION GUIDE



A full step by step installation guide is available from Trade Superstore Online. When fitted to the installation guide instructions, Coastline has a 10-year guarantee.*

Download at [tradesuperstoreonline.co.uk](https://www.tradesuperstoreonline.co.uk)

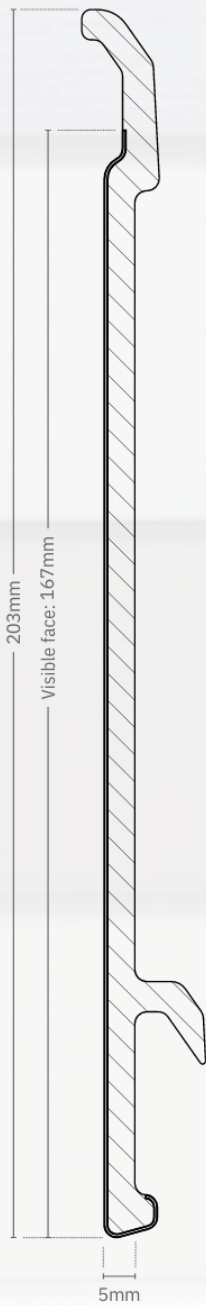


*** Coastline cladding is designed for use on buildings with a maximum of three storeys and at least 1 metre from boundaries. Failure to install Coastline in accordance to these instructions will invalidate the Product Guarantee.**

TECHNICAL INFORMATION

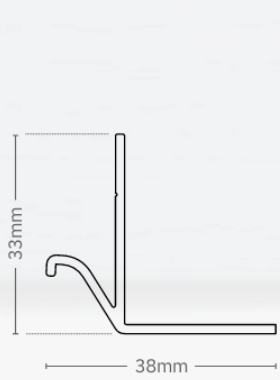
SYSTEM COMPONENTS

MAIN BOARD

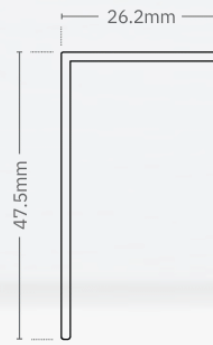


Cladding board
CL 200

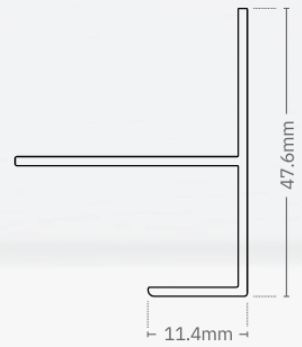
ALUMINIUM COMPONENTS



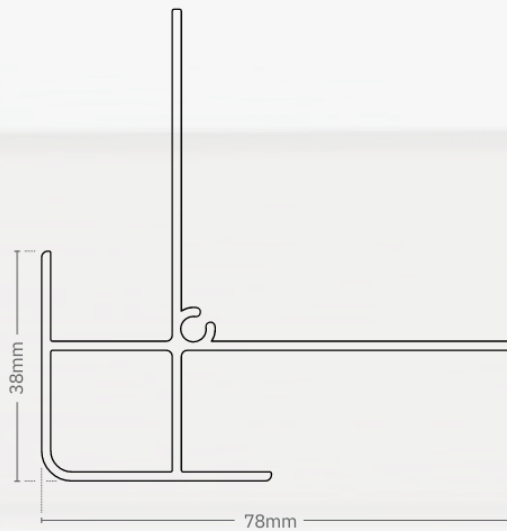
Starter bar
CL 001BK



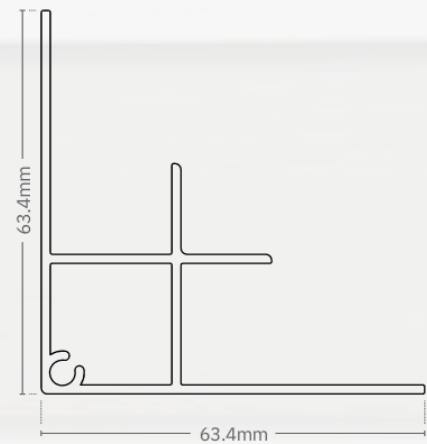
Head trim
CL 002BK



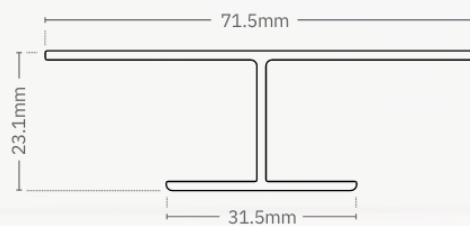
End closer
CL 004



External 90° Corner
CL 005

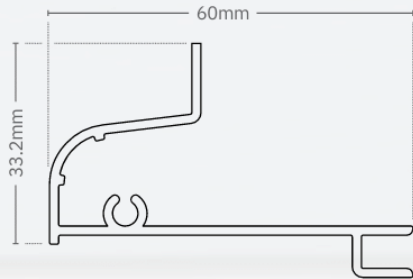


Internal 90° Corner
CL 006

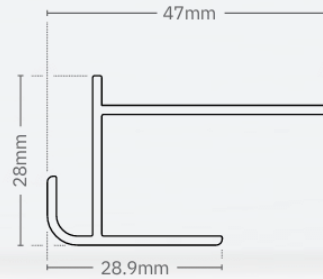


Butt joint trim
CL 007

ALUMINIUM WINDOW COMPONENTS



Window head trim
CL 003

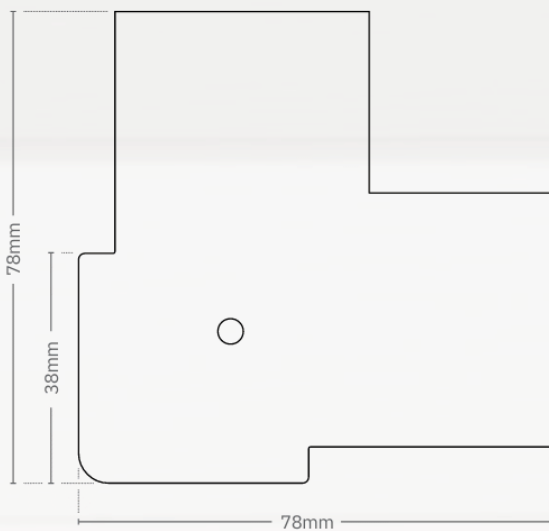


Window reveal corner
CL 008

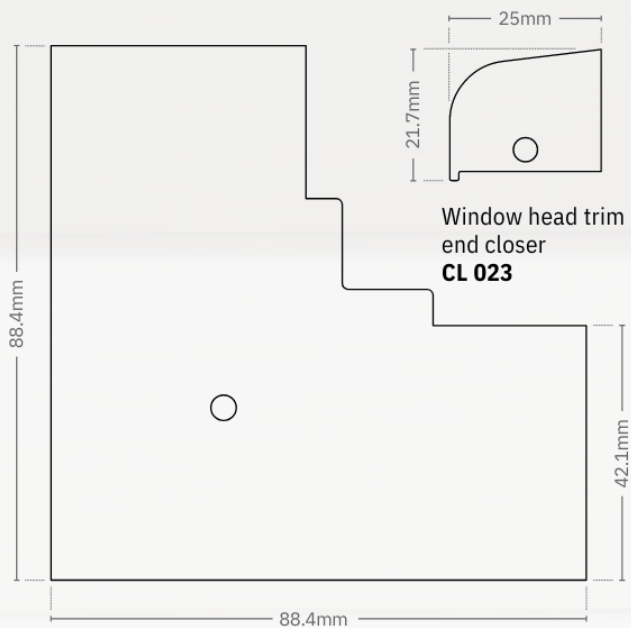


Window reveal trim
CL 009

ALUMINIUM END CLOSERS



External 90° Corner end closer
CL 025



Internal 90° corner end closer
CL 026

Window head trim
end closer
CL 023

* Coastline cladding is designed for use on buildings with a maximum of three storeys and at least 1 metre from boundaries. Failure to install Coastline in accordance to these instructions will invalidate the Product Guarantee.

TECHNICAL INFORMATION

PRODUCT SPECIFICATION

CLADDING BOARDS

- Foamed composite base material with fire retardant
- Co-extruded with a UV-stable colour cap with outstanding fade resistance
- Minimal expansion/contraction
- Impact tested to rigid profile standards
- Skin – Acrylonitrile Styrene Acrylate, colour matched to RAL colour ranges
- Highly weatherable premium embossed matt woodgrain finish
- Dimensions: 5000mm (length) × 203mm (width) × 5mm (depth)
- Weight: 5kg per board
- Visible face when assembled: 167mm in height
- A pack of 4 boards covers approx. 3.334m² (0.84m² each)
(Coverage may differ due to the amount of apertures within the wall construction)

TRIMS

- 1.5mm thick aluminium
- 80-90 microns powder-coated + Qualicoat Seaside Guarantee

COLOUR RANGE



Anthracite Grey
RAL 7016



Pigeon Blue
RAL 5014



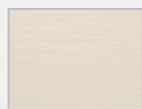
Moondust Grey
RAL 7040



Taupe
RAL 7006



Soft Green
RAL 7032



Oyster
RAL 1013

FIRE PERFORMANCE (2018)

- Conforms to BS EN 13501-1 Fire Classification for Construction Products
- BS EN 13245-2:2002 SBI Reaction to Fire - Single Burning Item – D-S3,d2
- BS EN 11925-2:2010 Reaction to Fire - Single Flame Source

TECHNICAL ACCREDITATION

- BBA Certified : Certificate 18/5534
- BS EN 13245-2:2008 PVC-UE profile for internal and external wall and ceiling finishes
- ISO 2796 Dimensional stability
- BS EN ISO 178 Flexural strength
- BBA T1/05 Voids appearance and dimensional checks

- BBA T1/04 Density
- BS EN ISO 3451-1 Ash content
- BBA T1/07 Fixings pull through strength
- BS EN ISO 180 Izod impact strength
- BBA T1/06 Hard body impact
- BS EN ISO 2409 Cross cut test
- BS EN 12608, clause 5.8.3 Colourfastness (resistance to UV ageing) - all primary colours for cladding boards and powder coated aluminium joints
- BS EN 13245-2, Annex B and Annex C - Resistance to Impact after UV ageing

PRODUCT GUARANTEE

- 10 years - warping, cracking & discolouration

Please see separate documentation for full details or visit www.eurocell.co.uk/coastline



Eurocell Profiles Limited

Fairbrook House
Clover Nook Road
Alfreton, Derbyshire
UK

18

Eurocell Coastline Cladding

EN13245-2:2008

PVC-UE profile for the external wall/ceiling finishes

Reaction to fire

(Class + indication of mounting D-s3, d2/AHM & fixing method)

Mechanical resistance

NONE
(Impact resistance code)

Resistance to fixing

(Impact resistance code)23:01

Durability

(Tensile impact resistance code)A.2

BBA certified



ANCILLARIES

AVAILABLE FROM 200+ Trade Superstore Online BRANCHES
NATIONWIDE

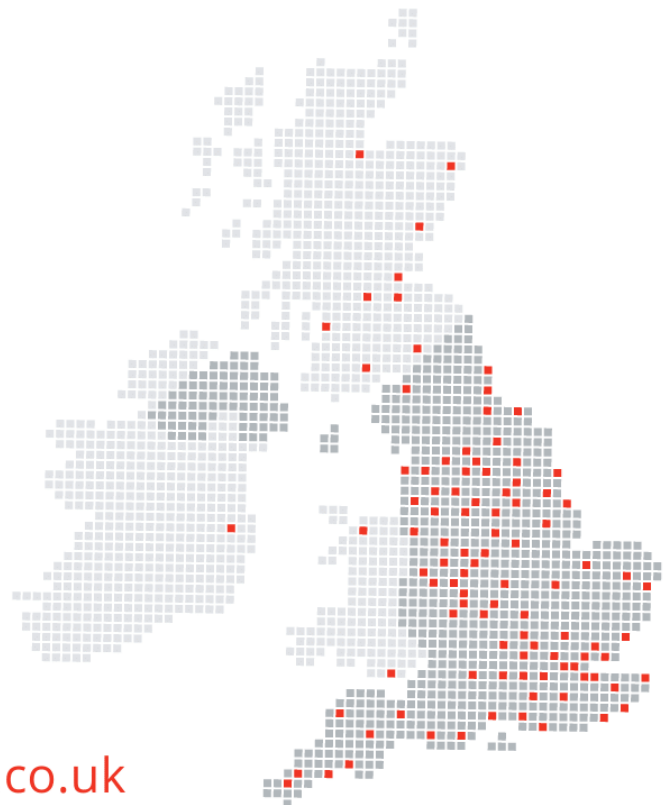
SILICONES & NAILS



Code	Description	Colour
SILIRUBCOLOROW	SILIRUBCOLOR	Oyster White
SILIRUBCOLORBG	SILIRUBCOLOR	Beige Grey
SILIRUBCOLORPG	SILIRUBCOLOR	Pebble Grey
SILIRUBCOLORPB	SILIRUBCOLOR	Pigeon Blue
SILIRUBCOLORGY3	SILIRUBCOLOR	Window Grey
SILIRUB 7016	SILIRUB 7016	Anthracite Grey
EWS701GR7016	Touch up pen	Anthracite Grey
EWS701GR7155	Touch up pen	Moondust Grey
EWS701PB	Touch up pen	Pigeon Blue
EWS701OW	Touch up pen	Oyster White
EWS701SG	Touch up pen	Soft Green
EWS701TP	Touch up pen	Taupe
Code	Description	Size
CL090	Coastline Fixing Nails (A4 316 Stainless Steel)	3mm x 25mm x 7.5mm

PLUS 10,000 MORE PRODUCTS

Including roofline, guttering and dry verge



TO FIND YOUR NEAREST
BRANCH EMAIL US

hello@tradesuperstoreonline.co.uk



For more information about the new [coastline®](#) lightweight composite cladding range from Eurocell, call our customer services team on 0333 090 9217, or visit tradesuperstoreonline.co.uk

Head Office - Unit 8 Tomlinson Industrial Estate Alfreton Road DE214ED

tradesuperstoreonline.co.uk



Product specification is subject to change without notification.
Please also note that colours shown are illustrative only, as the printing process does not allow 100% accurate colours to be reproduced.