

## Twister® Wire Connectors

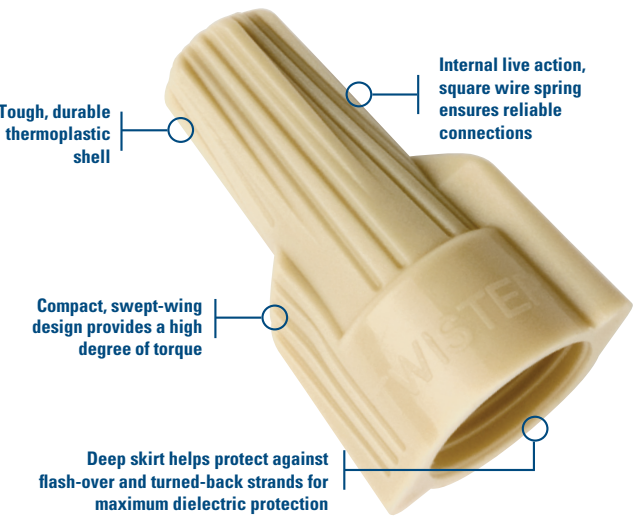
## WeatherProof Wire Connectors

## Connector Kits



## Wire Connectors

**A safe, fast and easy way to work**

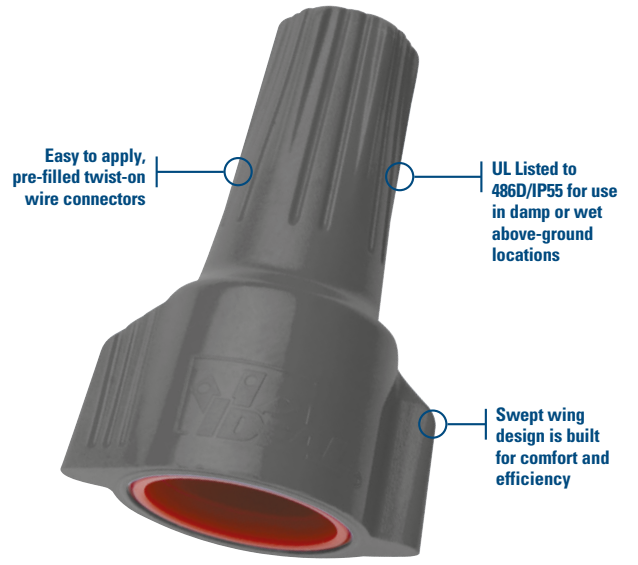


The No.1 twist-on wire connector. The Twister® easily handles the most common wiring tasks. A patented, expanding square-wire spring always ensures a quick, safe connection.

- Accept solid, stranded and flexible wires
- Cost effective replacement for terminal blocks
- BS 7671:2008 (17<sup>th</sup> Edition) compliant
- Fully re-useable

### Ordering Information

Model	Colour	Wire Combinations	Quantity	Cat. No.	Rating
340®	Lt. Blue	0.5mm <sup>2</sup> to 4.0mm <sup>2</sup> Min. 2 x 0.5mm <sup>2</sup> Max. 2 x 4.0mm <sup>2</sup>	Box of 100	<b>30-340</b>	32A / 450V
341®	Tan	0.5mm <sup>2</sup> to 6.0mm <sup>2</sup> Min. 3 x 0.5mm <sup>2</sup> Max. 2 x 6.0mm <sup>2</sup>	Box of 100	<b>30-341</b>	41A / 600V
342®	Grey	2.5mm <sup>2</sup> to 10.0mm <sup>2</sup> Min. 3 x 2.5mm <sup>2</sup> Max. 2 x 10.0mm <sup>2</sup>	Box of 50	<b>30-342</b>	57A / 600V
344®	Red/Yellow	0.5mm <sup>2</sup> to 4.0mm <sup>2</sup> Min. 3 x 0.5mm <sup>2</sup> Max. 4 x 4.0mm <sup>2</sup>	Box of 50	<b>30-144</b>	32A / 600V



Designed specifically for above ground, interior/exterior connections exposed to damp/wet and corrosive environments. WeatherProof® connectors are pre-filled with a non-hardening, silicone-based gel that protects against moisture and corrosion.

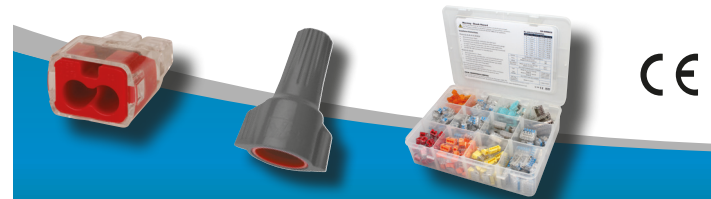
- IP55 rated for use in damp/wet locations
- Tough, UL 94V-2 flame-retardant shell rated at 105°C (221°F)
- BS 7671:2008 (17<sup>th</sup> Edition) compliant

### Ordering Information

Model	Colour	Wire Combinations	Quantity	Cat. No.	Rating
61	Grey/Orange	1.5mm <sup>2</sup> to 2.5mm <sup>2</sup> Min. 1 x 1.5mm <sup>2</sup> / Max. 2 x 2.5mm <sup>2</sup>	Card of 25	<b>30-1161</b>	24A/450V (IP55)
62	Grey/Red	1.5mm <sup>2</sup> to 4.0mm <sup>2</sup> Min. 2 x 1.5mm <sup>2</sup> / Max. 4 x 4.0mm <sup>2</sup>	Card of 20	<b>30-1162</b>	32A /450V (IP55)
63	Grey/Dr. Blue	2.5mm <sup>2</sup> to 4.0mm <sup>2</sup> Min. 3 x 2.5mm <sup>2</sup> / Max. 6 x 4.0mm <sup>2</sup>	Card of 15	<b>30-1163</b>	32A /450V (IP55)



Description	Quantity	Cat. No.
<b>32A Push-In Connector Installer Kit</b>	30 x 2-port push-in 30 x 3-port push-in 30 x 4-port push-in 30 x SpliceLine®	<b>30-5011EU</b>
<b>In-Sure® Push-In Connector Premium Kit</b>	50 x 2-port push-in 50 x 3-port push-in 50 x 4-port push-in 40 x 5-port push-in 20 x 6-port push-in 15 x 8-port push-in 30 x Twister 341 (FOC)	<b>30-5020EU</b>
<b>In-Sure® Push-In Connector Starter Kit</b>	30 x 2-port push-in 30 x 3-port push-in 30 x 4-port push-in 20 x 6-port push-in	<b>30-5021EU</b>
<b>Push-In &amp; Lever Wire Connector Kit (80 pcs.)</b>	10 x 2-port lever connector 10 x 3-port lever connector 5 x 5-port lever connector 10 x 2-port push-in 10 x 3-port push-in 10 x 4-port push-in 10 x 6-port push-in 15 x 2-port SpliceLine®	<b>30-5005EU</b>
<b>Push-In &amp; Lever Wire Connector Premium Kit (240 pcs.)</b>	30 x 2-port lever connector 40 x 3-port lever connector 20 x 5-port lever connector 30 x 2-port push-in 30 x 3-port push-in 20 x 4-port push-in 15 x 5-port push-in 15 x 6-port push-in 10 x 8-port push-in 30 x 2-port SpliceLine®	<b>30-5006EU</b>
<b>Twister® &amp; WeatherProof® Connector Premium Kit</b>	40 x Twister® 340 40 x Twister® 341 25 x Twister® 342 25 x Twister® PRO 344 20 x WeatherProof® 61 12 x WeatherProof® 62 12 x WeatherProof® 63	<b>30-5000EU</b>
<b>Twister® &amp; WeatherProof® Connector Starter Kit</b>	30 x Twister® 340 30 x Twister® 341 15 x Twister® PRO 344 15 x WeatherProof® 62	<b>30-5001EU</b>



For additional information on our wire connector range please visit: [www.wire-connectors.com](http://www.wire-connectors.com) BRCON0415-UK Printed in UK ©2015 IDEAL INDUSTRIES, INC.

**IDEAL INDUSTRIES**  
Unit 3, Europa Court, Europa Boulevard, Westbrook, Warrington, WA5 7TN, UK  
Tel.: +44 (0)1925 44 44 46 • Fax: +44 (0)1925 44 55 01 • [electrical.enquiries@idealnwd.com](mailto:electrical.enquiries@idealnwd.com)

VISION. PERFORMANCE. SERVICE.

SINCE 1916

Products and specifications subject to change. E&OE



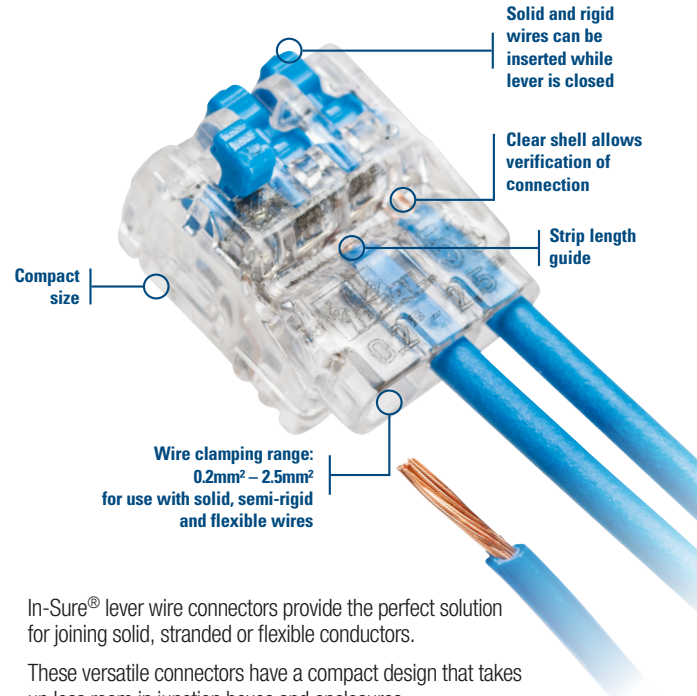
## Introduction

Electrical connectors have been at the heart of IDEAL's business for more than seven decades. Constant innovation in new connection technologies has positioned IDEAL as one of the world's leading manufacturers.

IDEAL connectors provide safe, dependable solutions for a broad range of low voltage wiring applications.

Designed to exacting European safety standards (EN 60998) and fully compliant with UK Wiring Regulations (BS 7671:2008), IDEAL manufactures a connector that's right for every job.

Our comprehensive range includes the wire connectors you need for an easier, more efficient job.



In-Sure® lever wire connectors provide the perfect solution for joining solid, stranded or flexible conductors.

These versatile connectors have a compact design that takes up less room in junction boxes and enclosures.

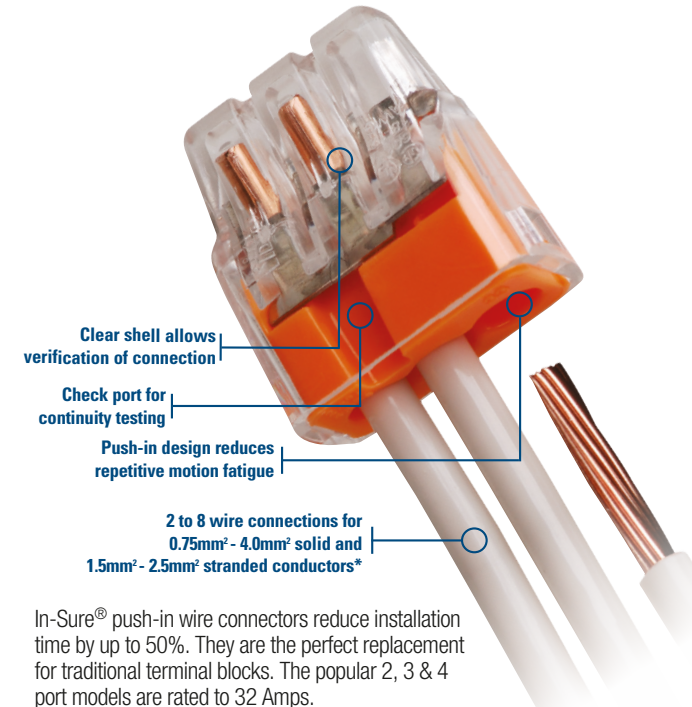
- Accept solid, rigid and flexible wires
- 3 x faster to install - no screwdriver required
- Rigid wires simply push in
- Fully re-useable
- Check port for continuity testing
- Clear shell allows visual inspection
- Compact size

Scan for product video



### Ordering Information

Model	Ports	Quantity	Cat. No.	Rating
52	2	Box of 40	<b>30-1052</b>	24 Amp 450V 120°C
53	3	Box of 40	<b>30-1053</b>	
55	5	Box of 30	<b>30-1055</b>	
59	Mixed	Combo Box:	<b>30-1059</b>	
		10 x 2-port 10 x 3-port 10 x 5-port		



In-Sure® push-in wire connectors reduce installation time by up to 50%. They are the perfect replacement for traditional terminal blocks. The popular 2, 3 & 4 port models are rated to 32 Amps.

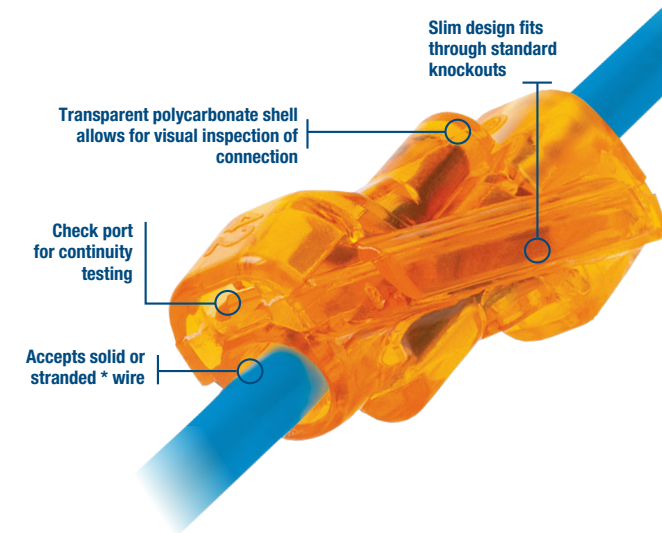
- High quality, secure connections
- Ergonomic design for easy grip and comfort
- Low insertion force for fast connections
- Continuity test port
- Colour coded for easy identification



### Ordering Information

Model	Colour	Ports	Quantity	Cat. No.	Rating
32	Red	2	Box of 100	<b>30-1032</b>	32 Amp 450V 105°C maximum
33	Orange	3	Box of 100	<b>30-1033</b>	
34	Yellow	4	Box of 100	<b>30-1034</b>	
87	Grey	5	Box of 50	<b>30-087</b>	24 Amp 450V 105°C maximum
88	Blue	6	Box of 50	<b>30-088</b>	
90	Black	8	Box of 50	<b>30-090</b>	

\* Stranded wire is limited to ≤ 7 strands



SpliceLine® in-line wire connectors provide a crimp-free, solderless butt splice. Accepts a broad range of wire sizes, allowing one connector to do the job of multiple through-crimps. Its end-to-end connection is also a great solution for pre-fab operations

- Tool-free, push-in through crimp
- Easily passes through standard knockouts
- End-to-end connection ideal for pre-fab operations
- 3 x faster to install compared to butt splices - no more crimping

### Ordering Information

Model	Wire Range	Quantity	Cat. No.	Rating
42	Solid: 0.5mm <sup>2</sup> - 4.0mm <sup>2</sup> Stranded*: 1.0mm <sup>2</sup> - 2.5mm <sup>2</sup>	Bag of 10	<b>30-1342S</b>	32A 450V 105°C
		Box of 100	<b>30-1042</b>	

\* Stranded wire is limited to ≤ 7 strands



Scan for product video

