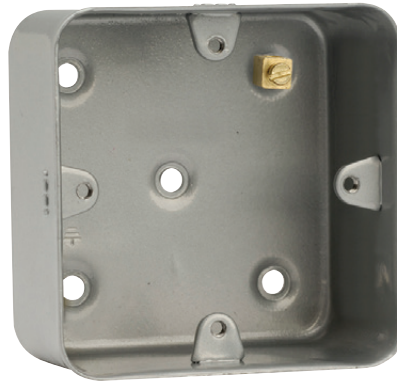




Product Code: CL085

Description: 1 Gang 40mm Deep Mounting Box



General Information

Dimensions (mm)	76 (W) x 76 (H) x 40 (D)	
Style	Metal Clad	
Finish	Metal Clad Grey	
Materials	Mounting Box: Electrophoretically Coated Steel	Terminals: Brass
	Terminal Screws: Steel & Yellow Passivated	
Termination Type	Screw	
Back Box Knockouts - Total (mm)	None	
Back Box Earth Terminal Supplied	Yes	
Operational Temperature (°C)	-5 to +40	
Warranty (Years)	10	

Standards BS 4662

Additional Information For cleaning / polishing of products, use only a soft, dry, clean cloth. Ensure that the mains supply is isolated before commencing installation and refer to the circuit diagram with the relevant product. Bare earth cables must always be covered with appropriate sleeving and wired to the earth terminal.