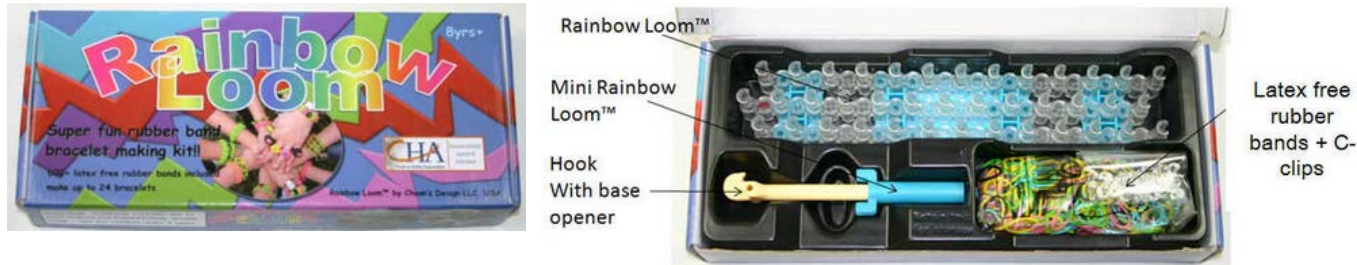


Dangers of Counterfeits and How to Spot Them:

12/30/2013

Rainbow Loom® (US Patent 8,485,565 and international patents pending) is tested to comply with ASTM and CPSIA toy safety standards by US-accredited labs.



The counterfeit products do not comply with any ASTM, CPSIA, EU, or Japan's toy safety standards. The counterfeit products are very similar to the original/genuine product. They are sold at the online stores and kiosk stores nationwide targeting unsuspecting customers.



Counterfeit/fake products may contain lead and other harmful substances. If you suspect that you may have purchased a fake product, please discontinue use immediately for your children's safety.

Please share this information with your friends and family


 Original


 Counterfeit


 Counterfeit


 Counterfeit


 Counterfeit

As you can see, these fake products possess the same name as ours and have only minor differences in their almost-identical packaging; therefore, it is very difficult to differentiate the genuine from the counterfeit products. The counterfeit products are inferior in quality, are unsafe for your children, and have not been through testing in accordance with Government Toy Safety Standards (may contain lead and other dangerous substances). Many online sellers are using the pictures of the original Rainbow Loom® to list online but ship counterfeits to customers. Please purchase from our authorized retailers or our website to ensure that you are purchasing the genuine Rainbow Loom® products.

Counterfeit product is unsafe – creates sharp edges when it breaks

Controlled breakage, engineered in the USA for safety

Original Rainbow Loom®:



Counterfeit:



There have been several reported cases of children getting hurt by counterfeit pin bars

Counterfeits May Be Harmful to Your Children



Counterfeit

The fake looms, hook, clips, and rubber bands have not been tested for toy safety requirements and may contain lead and other toxic substances!

Please share this information with your friends and family

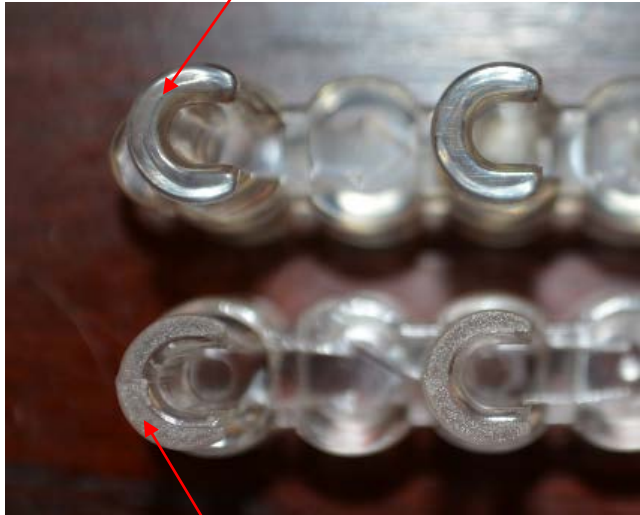
Top is the Original Rainbow Loom[®] Bottom is the counterfeit



Rounded edge

Sharp edge

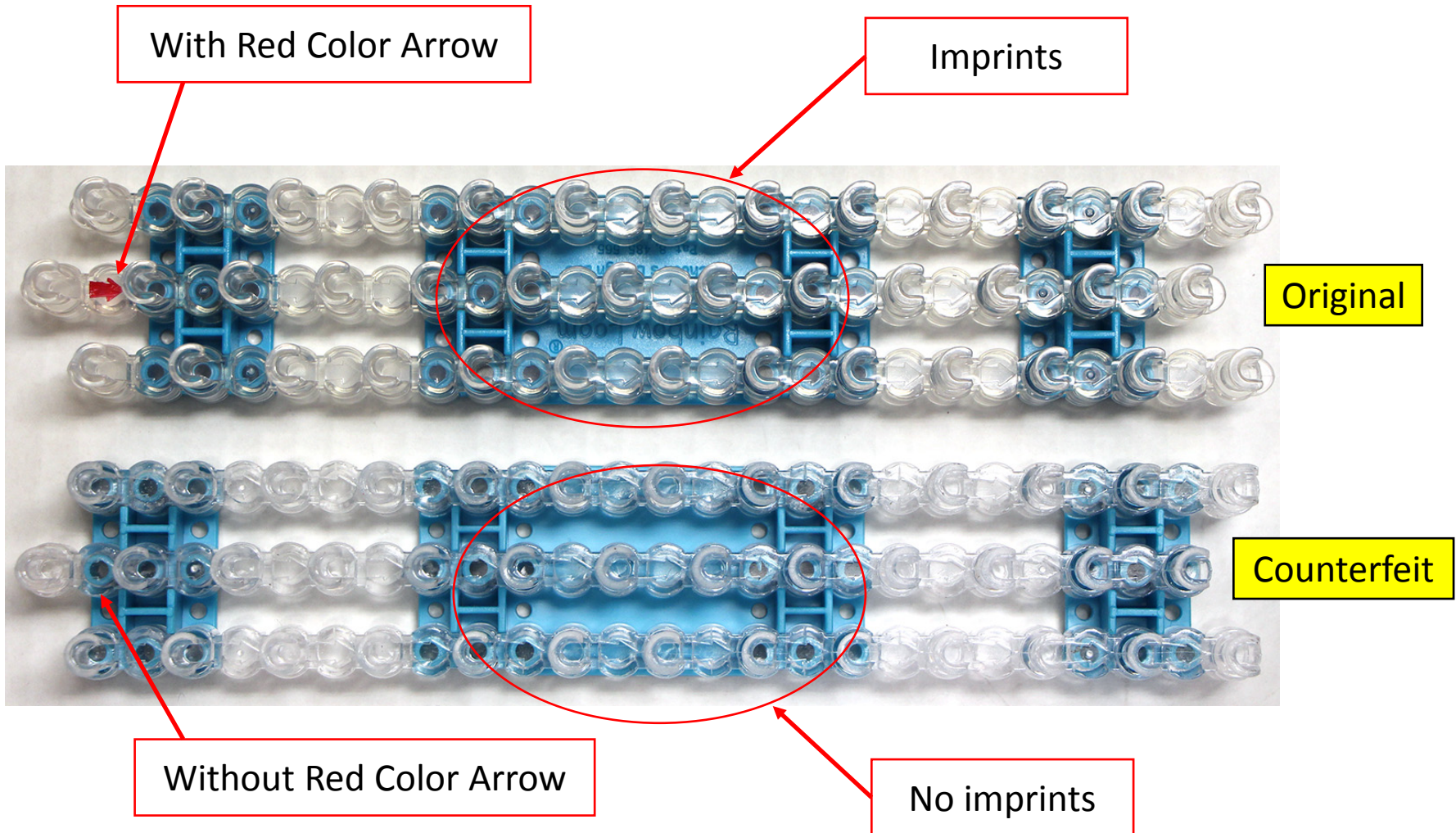
Smooth surface



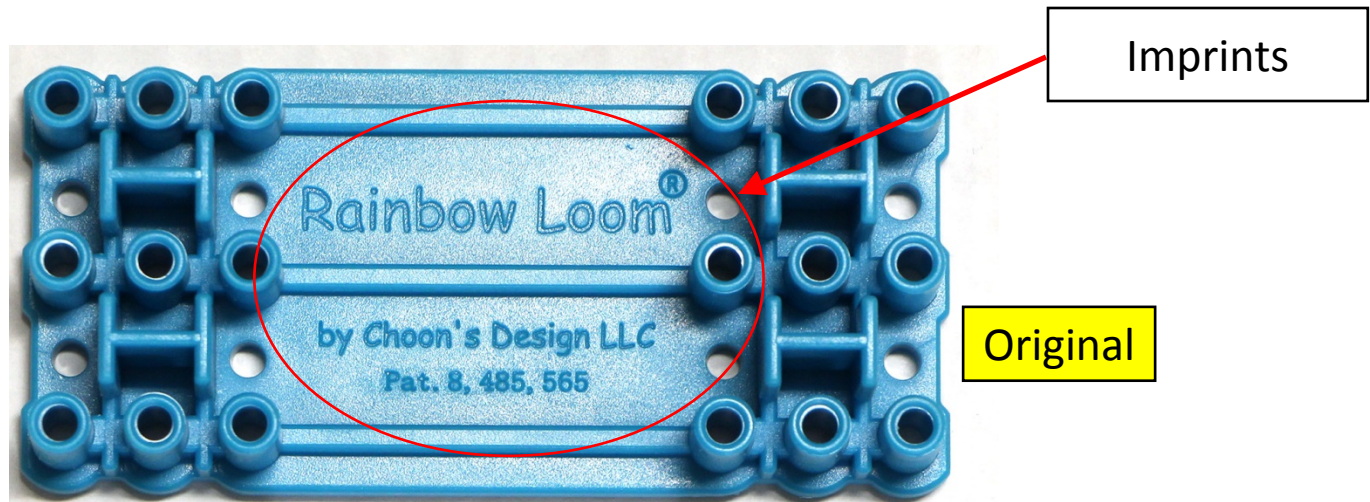
Rough surface

Please share this information with your friends and family

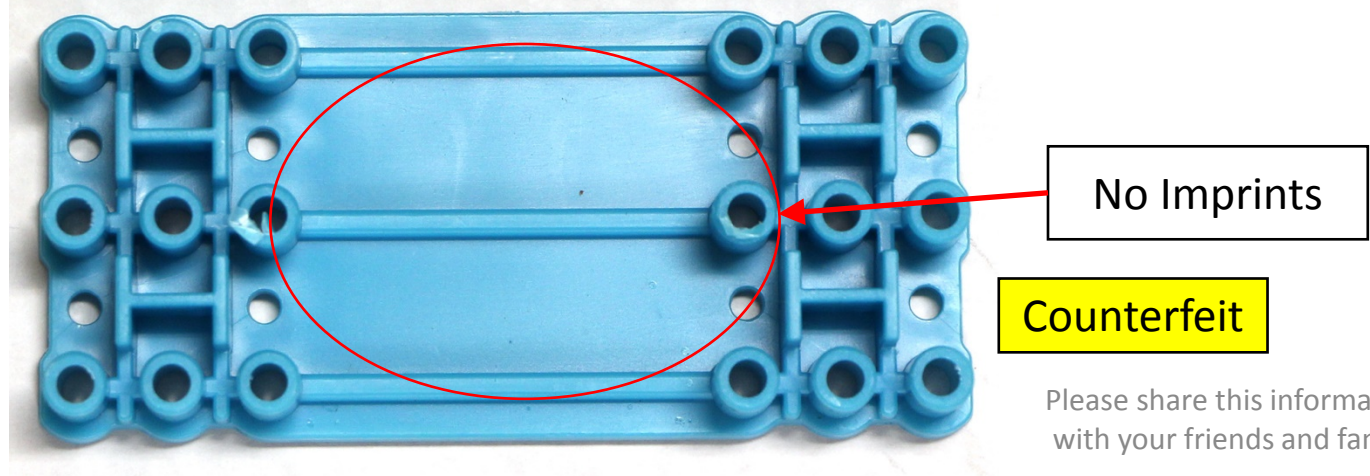
Original vs. Counterfeit Rainbow Loom[®] (Top View)



Original vs. Counterfeit: Large Bases

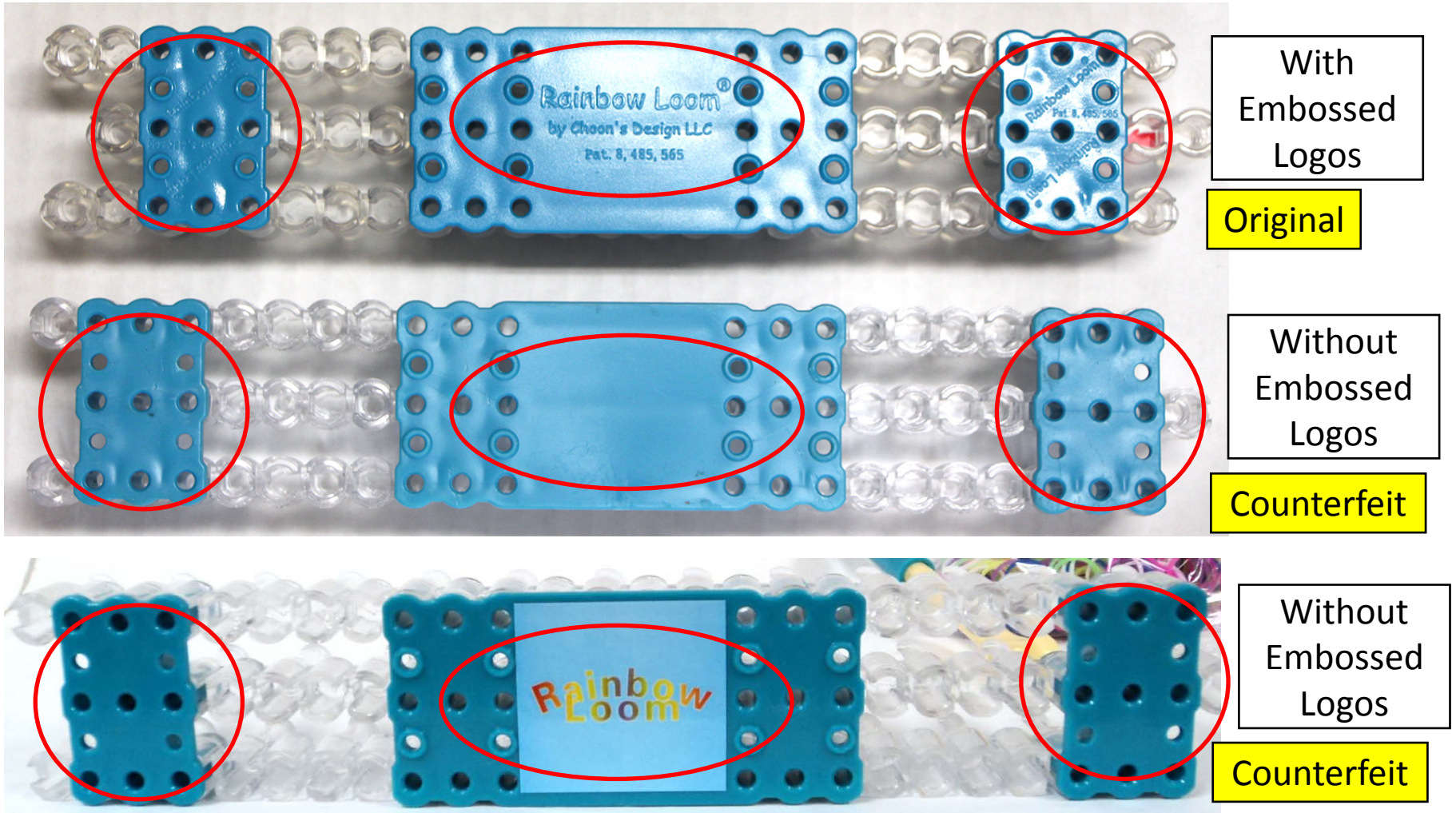


Please share this information with your friends and family



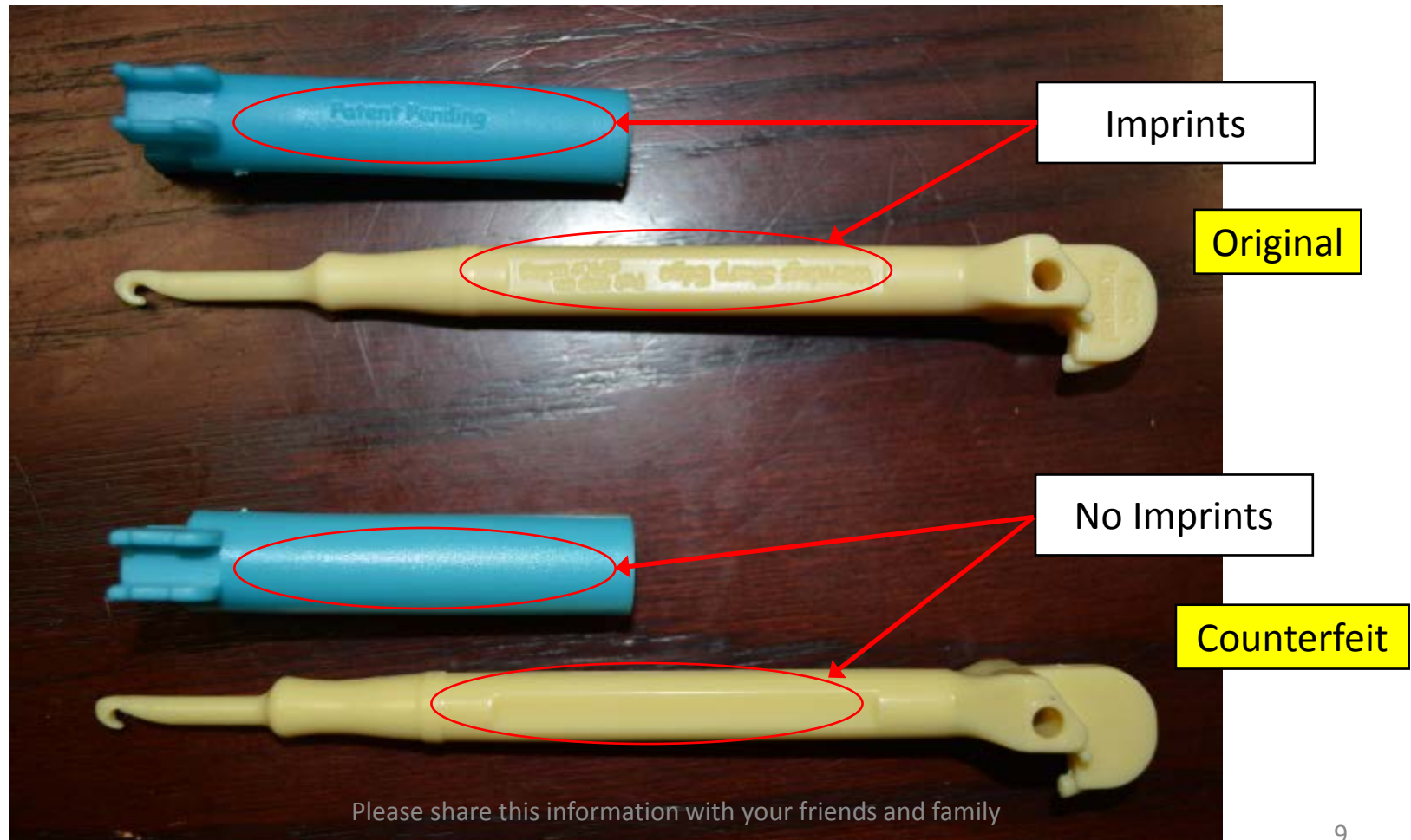
Please share this information with your friends and family

Original vs. Counterfeit Rainbow Loom[®] (Bottom View)

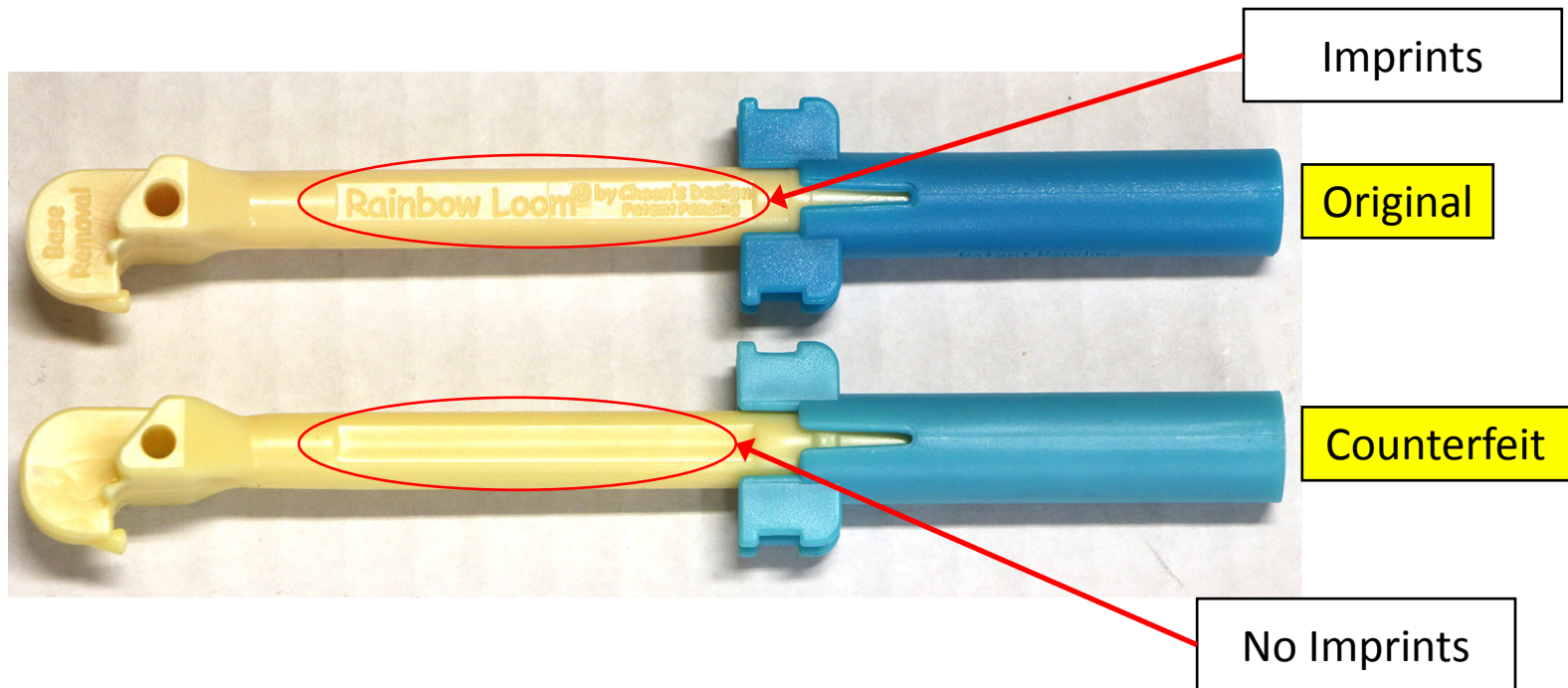


Original vs. Counterfeit Mini Rainbow Loom[®] and Hook

12/30/2013

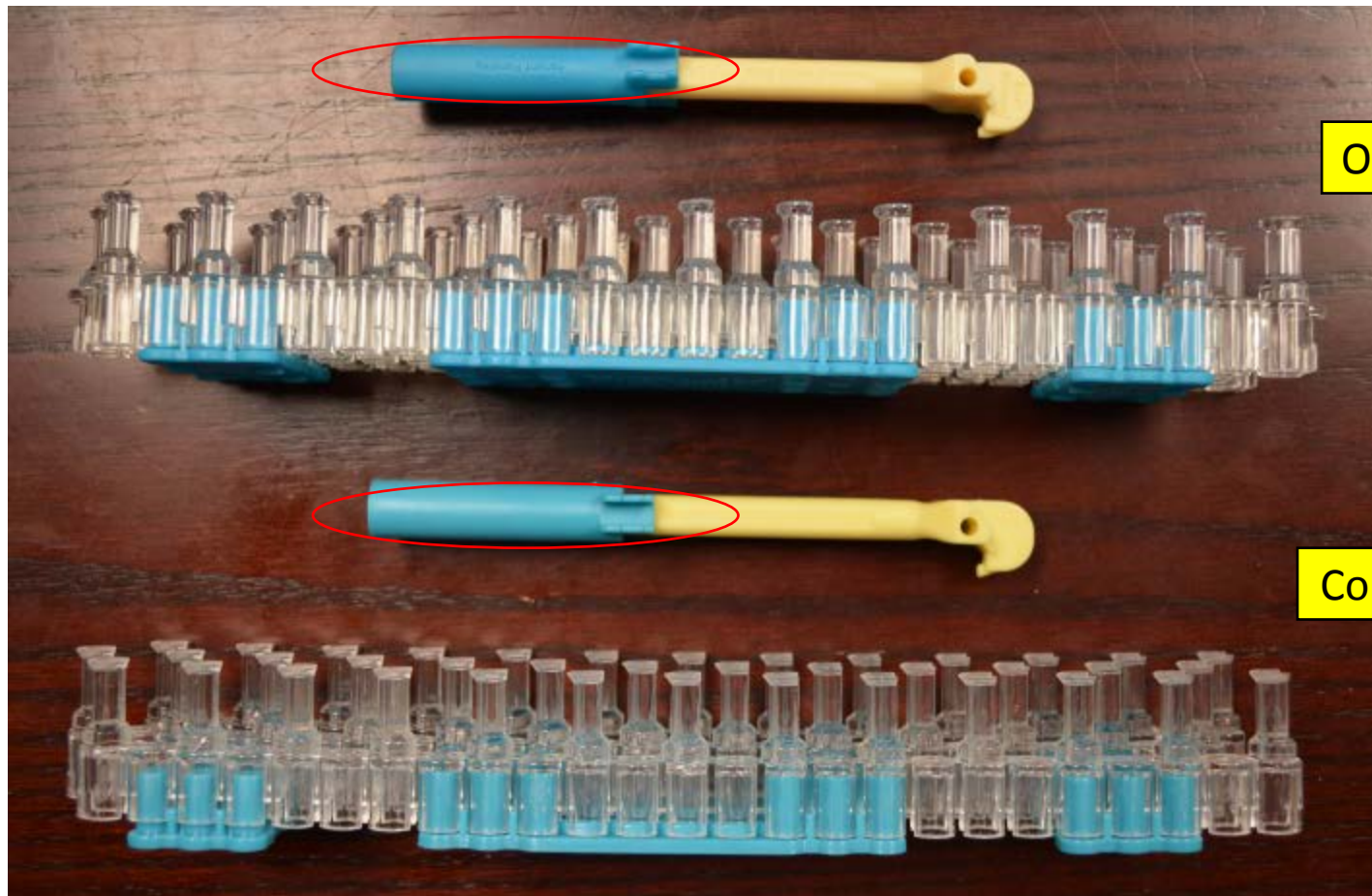


Original vs. Counterfeit Hook



Original vs. Counterfeit Rainbow Loom[®] (Side View)

12/30/2013



Original

Counterfeit

If you have purchased a counterfeit product, please report to the Homeland Security at <http://www.iprcenter.gov/referral>

The information that should be provided include:

1. Name of Seller
2. Address or location of seller (Website address if from Amazon or eBay)
3. Date purchased

You may remain anonymous, if desired.

You may perform a chargeback with your credit card issuer to get your money back. If you have any questions or comment, please contact us at intellectualproperty@rainbloom.com. Most importantly, stop using the counterfeit product for your children's safety.

Sincerely,

Choon's Design LLC, maker of Rainbow Loom®

Rainbow Loom LLC, official Rainbow Loom® Webstore