

# I-Plants

Magazine

## Urban Horticulture

June 2016

The On-line Magazine  
for Interior Plantscapers,  
Urban Horticulturists,  
Architects, Designers,  
Landscapers, Green Walls,  
Green Roofs and Allied  
Associates

WINNERS

**2016 International  
Design Contest Winners**

Young People  
enlinton  
ntre

OPENING!  
NOW OPEN

WINNERS

# **TROPICAL COMPUTERS, INC.**

**DIGITAL IMAGES FOR PLANT PROFESSIONALS**

**561-734-1430**

**CDPLANTS.COM**

**JGIALONE@COMCAST.NET**

**WHETHER IT'S ASI, JAY SCOTTS, LECHUZA, OLD TOWN OR MANY OTHERS  
YOU CAN  
CREATE GREAT DESIGNS AND SHOW YOUR CLIENTS WHAT THEY WILL  
BE PURCHASING.**



**THERE IS NO BETTER WAY TO SELL YOUR PROJECTS!!**

**NO MATTER WHOSE PLANTS  
OR CONTAINERS YOU USE  
YOU GET TO PLACE THEM  
IN YOUR DESIGN THE WAY  
YOU WANT THEM!**

**WE HAVE OVER 850 PLANT  
AND 3000 PLUS CONTAINER  
IMAGES !**

**NEW-CALL ABOUT  
OUR  
SUCCULENT AND CACTI  
COLLECTION**



Design courtesy of McCaren Designs

# In this edition...

- 5 From the Editor
- 7 Design Contest Winners and Our Judges
- 12 Grand Award Winner
- 18 Green Walls Winners
- 28 Exterior Planting Winner
- 30 Free Standing Containers Winners
- 46 Atrium Winner
- 50 Floral Winner
- 52 Holiday Winners
- 66 EFIG Contest Winners
- 72 AmericanHort Interior Plantscape Hall of Fame Inductees
- 73 Upcoming Events
- 75 Green Earth-Green Plants® Certified Businesses Directory
- 76 Green Plants for Green Buildings Events



## About the Cover:

And the winner is.....

RioCan Yonge Eglinton Centre, installed by Air Strength Canada and designed by GSky Plant Systems, Inc. is the Grand Award Winner for our 2016 International Design Contest! This is the first time a project outside of the United States has won this award, and we couldn't be happier for our winners! Find out more in this issue of I-Plants Magazine.

Feel free to forward this to your staff, colleagues and clients or subscribe them at [www.I-PlantsMagazine.com](http://www.I-PlantsMagazine.com). If you'd like to use one of our articles in your newsletter please contact the author. All materials in this magazine including photos are copyrighted and may not be used without written permission by the author or editor.

### **Interiorscape Suppliers and Associations:**

Interested in advertising with us? Contact [Kathy@JfaConsultingBiz.com](mailto:Kathy@JfaConsultingBiz.com) to find out how you can access interiorscape buyers and save money over print publication advertising.

© 2016, Johnson Fediw Associates, The Woodlands TX. All rights reserved. If you wish to use any materials in this publication you must contact Kathy Fediw at [kathy@jfaconsultingbiz.com](mailto:kathy@jfaconsultingbiz.com) first for written permission. Thank you for protecting our copyrights.



**SAVE 7%**

on your next online order  
with coupon code:

**PlantsMag**

[www.newprocontainers.com](http://www.newprocontainers.com)



**WHOLESALE DISTRIBUTOR AND MANUFACTURER**  
of plant containers since 1989



**AMERICAN  
MADE**  
containers lines

**INTRODUCING  
JAY SCOTTS**  
fiberglass containers

**SAME DAY  
SHIPPING**  
1-800-869-9285



# From the Editor

And the winner is.....

I've been waiting all year long to say that! This issue is dedicated to all the winners (don't worry, in my book you're a winner, too!) This year our International Design Contest has a record-breaking 25 outstanding winners in green walls, interiorscapes, urbanscapes and floral work. The voting by our esteemed judges was very close and some won a higher ranking by just a percentage or two. We quite literally ran the whole gamut, from a wedding to a mausoleum and everything in between! Find out more about these winning projects in this issue of I-Plants/Urban Horticulture Magazine.

Plus—we are happy to share with you the winners from EFIG's awards contest across the pond. And AmericanHort announces the latest inductees into the AmericanHort Interior Plantscape Hall of Fame—congratulations to Dr. Terence Hall and Janice Goodman, owner of Cityscapes, Inc., Boston.

Don't forget to register for AmericanHort's Cultivate'16 conference in July. I will be speaking at the conference this year on July 11, giving workshops on how to develop a training program and how to effectively give your employees on the job training; along with a half-day workshop on plant care for your techs!

So sit back, relax and join us in celebrating all of the winners in this month's issue!

Your green plants advocate,

Kathy Fediw, Publisher and Editor

[Kathy@InteriorscapeConsultant.com](mailto:Kathy@InteriorscapeConsultant.com)

---

*Please support our advertisers who make this publication possible and free to you! **Click on their ads and tell your suppliers** you read this magazine! Then be sure to spread the word and subscribe.*

[Tropical Computers](#)

[Air Strength Canada](#)

[Peachtree Plants](#)

[Aquamate/American Granby](#)

[Soil Sleuth Soil Probes](#)

[Southwest Products: Brand X & other supplies](#)

[Norris Design](#)

[Green Earth-Green Plants® Certification](#)

[NewPro Containers](#)

[GSky Plant Systems, Inc.](#)

[Midwest Tropicals](#)

[No Sweat! Liners](#)

[Plant PAWS](#)

[Mary Wacker, Author](#)

[Johnson Fediw Associates](#)

[Green Plants for Green Buildings](#)

Join our list of advertisers and reach interior plantscape owners, managers and sales associates throughout the world. Just [CLICK HERE](#) for your free media kit.

©2016, Johnson Fediw Associates. Feel free to forward this publication to your friends and colleagues. Contents are copyrighted and may not be sold or duplicated without written permission. Please contact Kathy Fediw at [Kathy@JFAConsultingBiz.com](mailto:Kathy@JFAConsultingBiz.com) for details.

**CLEAN BOTH SIDES OF THE LEAF AT THE SAME TIME!**



**Mini Paws  
&  
Drip Catchers**



**36"x 30" Toss & Go size**

**Waterproof throw keeps water and plant care products off floors and carpets.**

**Make installation and maintenance tasks quick & easy.**

**Hose off to clean - dries quickly.**

[www.plantpaws.com](http://www.plantpaws.com)

**For distributor info call 619-528-0119**

**Manufactured by Evergreen Interiors Inc**

**Over 350  
Interiorscapers  
Are Using  
Brand X**



**Are You?**

**Get Your 1 Gallon FREE Sample**

**(800) 333-7977**



**The Ultimate Soil Probe**



Plants do poorly without air to the roots. **OVERWATERING** causes the air to be pushed out of the soil, compacting the soil around the waterlogged roots of the plant. This suffocates the plant, causing a slow, unsightly death.

**SOIL SLEUTH™** gathers samples at five levels – **and aerates at the same time!**

- Reduces costly plant replacement
- Aerates soil so plants can breathe
- Samples moisture at five levels
- Rounded point is gentle to roots
- Made of high-impact acetal plastic
- Lightweight – 12.5"
- Indoor-outdoor use
- Recyclable – made in the U.S.A.

**Detect a difference with SOIL SLEUTH™ !**

**1-800-301-4691 or (937) 436-5731**

[www.soilsleuth.com](http://www.soilsleuth.com)

[soilsleuth@aol.com](mailto:soilsleuth@aol.com)

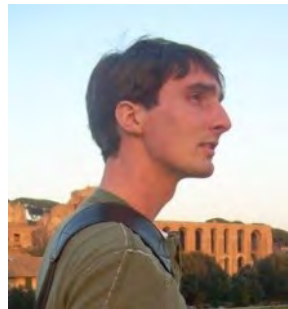
# 2016 DESIGN CONTEST WINNERS

**Thank you to our judges!**

*A donation has been made to Green Plants for Green Buildings in honor of this year's judges.*



*Rich Batcho, President of Batch-o-Blooms, award winning interiorscaper, known for his holiday/special events designs.*



*Riley Anderson, landscape designer at NDLI-Norris Design and columnist for I-Plants/Urban Horticulture Magazine.*



*Mary Golden, Advocacy Incubator working with Green Plants for Green Buildings and Founder of The Golden Group.*



*Mike Lewis, CLP, Executive Vice President of Foliage Design Systems, Inc. and past President of GPGB.*

## **GRAND AWARD**

### **RioCan Yonge Eglinton Centre by Air Strength Canada**

22 Harbour Bay  
Winnipeg, Manitoba, Canada  
R3T 5G6

Also First Place, Green Walls \$40,000+

## **GREEN WALLS:**

**\$100-\$10,000: First Place:** Constant Contact by Metro Tropical Plant Co., Inc.  
3 Breed Ave. Rear, Unit G  
Woburn, MA 01801

**Second Place:** Private Residence by Foliage Design Systems  
7048 Narcoossee Road  
Orlando, FL 32822

**Third Place:** Lovin' Oven by Kelly Mac Interiorscapes  
6 Mill Street  
Pittstown, NJ 08867





Third Place: 301 Congress Avenue by Texas Tropical Plants, Inc.  
9201 Brown Lane, Suite 200  
Austin, TX 78754

Honorable Mention: Holy Sepulchre Mausoleum by Botanicus  
523 Fillmore Ave.  
Tonawanda, NY 14150

**ATRIUM:**

\$100-\$10,000: First Place: Spring Valley YMCA by BATCH-O BLOOMS  
231 Integrity Ave.  
Oreland, PA 19075

**FLORAL WEDDING:**

\$100-\$10,000 First Place: Rustic Natural Wedding by Peachtree Plants  
6670 Jones Mill Court, Suite D  
Peachtree Corners, GA 30092

**HOLIDAY:**

\$100-\$10,000: First Place: Shure, Niles, IL by Moore Landscapes, Inc.  
1869 Techny Rd.  
Northbrook, IL 60069

Second Place: NYC Reception Area Holiday by Kelly Mac Interiorscapes  
6 Mill Street  
Pittstown, NJ 08867

Third Place: Woodfield Corporate Center, Schaumburg, IL by Moore  
Landscapes, Inc.  
1869 Techny Rd.  
Northbrook, IL 60069

\$10,000-\$20,000 First Place: Boston Park Plaza Hotel by Cityscapes Inc.  
197 Clarendon Street, Fl. 9  
Boston, MA 02116

\$20,000-\$30,000 First Place: 200 S. Wacker, Chicago, IL by Moore Landscapes, Inc.  
1869 Techny Rd.  
Northbrook, IL 60069

\$30,000-\$40,000 First Place: Two Liberty Place by BATCH-O BLOOMS  
231 Integrity Ave.  
Oreland, PA 19075

\$40,000+ First Place Riverwood 100 by Peachtree Plants  
6670 Jones Mill Court, Suite D  
Peachtree Corners, GA 30092



Planning

Landscape Architecture

Community Branding

Urban Design

Sustainable Design

Development Coordination

Parks & Recreation Planning

Construction Services

GIS Services

Visual Communications



Norris Design provides service and solutions that are creative, yet grounded in realism. The results can be built and built well. So when asked, *“Is it implementable?”*...

**we can answer  
YES everytime**

Give us a call **512.900.7888** and we'll show you how!



[www.norris-design.com](http://www.norris-design.com)

Austin | Denver | Frisco | Chicago | Tucson | Phoenix



**AIR STRENGTH**  
CANADA  
COMMERCIAL INTERIOR LANDSCAPING

Air Strength Canada would like to congratulate RioCan Yonge Eglinton Centre on being awarded the I-Plants 2016 International Design Contest's Grand Award for the living wall on Yonge St., Toronto Ontario, Canada. The RioCan Yonge Eglinton living wall of tropical plants measures 55' tall and starts 20' off the ground. It is enclosed within a 5-story tall glass atrium to showcase the living wall as urban greenspace. This wall is a masterpiece of modern plantscaping.

# Grand Award Winner!



Air Strength Canada would like to thank GSky Plant Systems, Inc., and Cutting Edge Guelph for partnering with us for the installation and ongoing maintenance of this phenomenal living wall.

Air Strength Canada is an international award winning interior landscaping company servicing Winnipeg and Toronto Canada. Air Strength Canada specializes in interior landscaping, living walls, commercial holiday décor and services for commercial clients.



Air Strength Canada  
[www.AirStrength.com](http://www.AirStrength.com)  
204.275.2534



**Grand Award and  
First Place, Green Walls \$40,000+**

## Air Strength Canada for RioCan Yonge Eglinton Centre

---

*Plants/flowers used:* Philodendron Cordatum, Neon Pothos, Snow Queen Pothos, Ficus Elastica Burgundy.

*Growers/brokers used for plant material:* Jill Jenson

*Containers used:* GSky Plant Systems, Inc. – Versa wall





Second Place, Green Walls, \$40,000+

## Botanicus for 250 Delaware Lobby

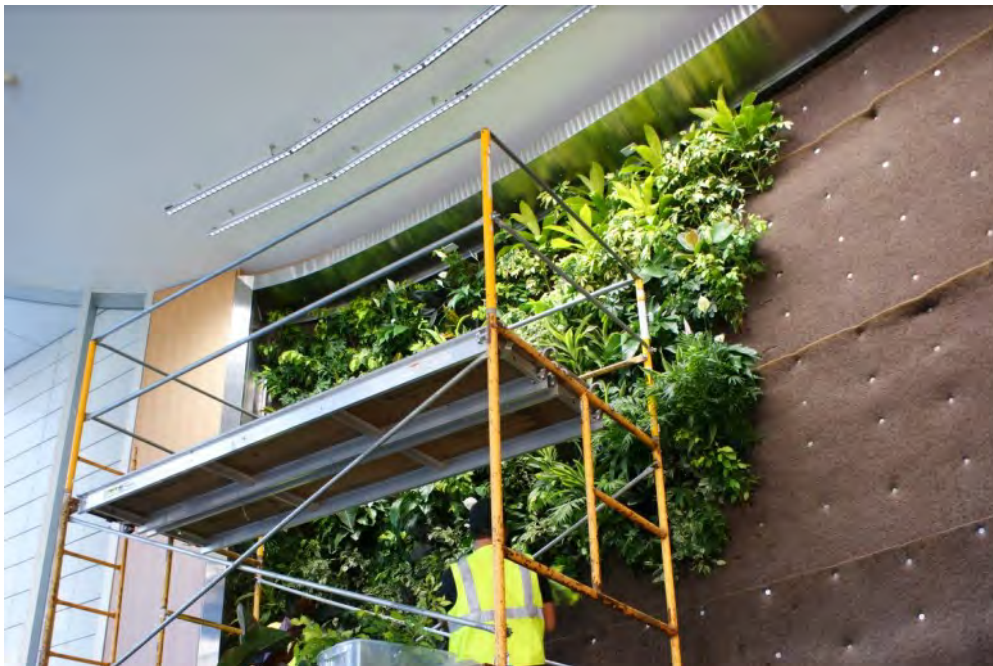
---

*Plants/flowers used:* Dracaena limelight and lemon lime, Ficus decora Rubra and Tineke, Philo Rojo, Ficus Starlight and Margarite, Arboricola mini, Aglaonema Moonlight bay

*Growers/brokers used:* Jensen Nurseries, Ontario, Canada, Farm Life, Homestead, FL

*Containers used:* NedLaw, CA, ASI tall cylinders





**Lower Your Costs  
Increase your Sales  
and Profits!**



**Consulting and Coaching  
Interiorscape Owners,  
Managers, Sales & Designers  
Hort and Service Workshops  
Call or email today!  
Kathy Fediw, LEED AP, CLP, CLT  
281-687-6966  
Kathy@InteriorscapeConsultant.com**

Phoenix Series—  
the building blocks  
of a great design!  
Now in stock at  
**Midwest Tropicals**



Everything for your  
Plantscaping business.

All in one place!

***New in 2016—Beneficials!***

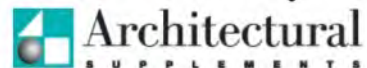
Call for more info or visit our website:

***myfoliage.supplies***

**844-FOLIAGE**



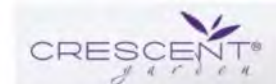
**Midwest Tropicals**



**MT Designs**



**LiveWall**





gsky.com

# green your world

Founded in 2004, GSKY® Plant Systems, Inc. is an award-winning leading provider of vertical Living Green Walls in North America, Europe, Australia & the Middle East.



## design install maintain

- Shop Drawings
- Plant Design
- Plant Logistics
- Engineering Support
- Project Management
- Ongoing Service

## support

- Dealers
- Maintenance Providers
- Corporate Clients

**GSKY PLANT SYSTEMS, INC.**

T: 888.708.GSKY (4759)

Info@gsky.com

## Training Manuals for Techs



# PLANTSCAPE UNIVERSITY



Beginners, Intermediate and Advanced Programs

Each includes handouts, recommended activities, tests, diplomas and more for 6-10 classes

Use for meetings or individual study for as many people as you want!

Perfect basis for your career path

For more information and to order **CLICK HERE**

Or go to [www.InteriorscapeConsultant.com](http://www.InteriorscapeConsultant.com) (under Books)

Or call 281-687-6966 for more information and a sample class

Third Place, Green Walls, \$40,000+

## GSky Plant Systems, Inc. for Gallery Furniture

---

*Plants/flowers used:* Philodendron Cordatum, Epipremnum Aureum Marble Queen, Schefflera 'Luseane', Epipremnum Aureum Neon Pothos, Dracaena 'Janet Craig Compacta'

*Containers used:* Proprietary patented tray system by GSKy





*Designed by P. Kotlarski*

- Plant Key
- 1. Philodendron Cordatum
  - 2. Epipremnum Aureum - Marble Queen Pothos
  - 3. Schefflera 'Luseane'
  - 4. Epipremnum Aureum - Neon Pothos
  - 5. Dracaena 'Janet Craig Compacta'



## Honorable Mention, Green Walls, \$40,000+

# Cityscapes Inc. for Van Ness Residential Lobby – Samuels and Associates

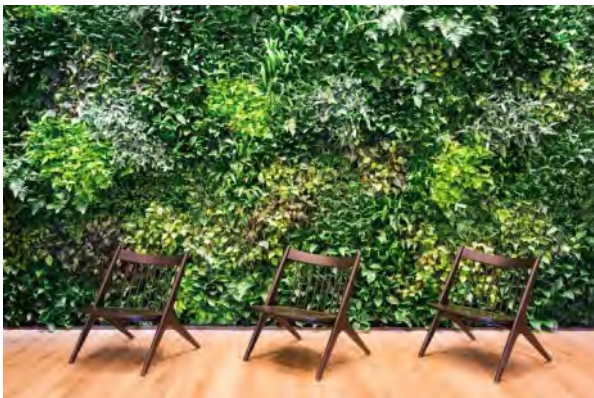
---

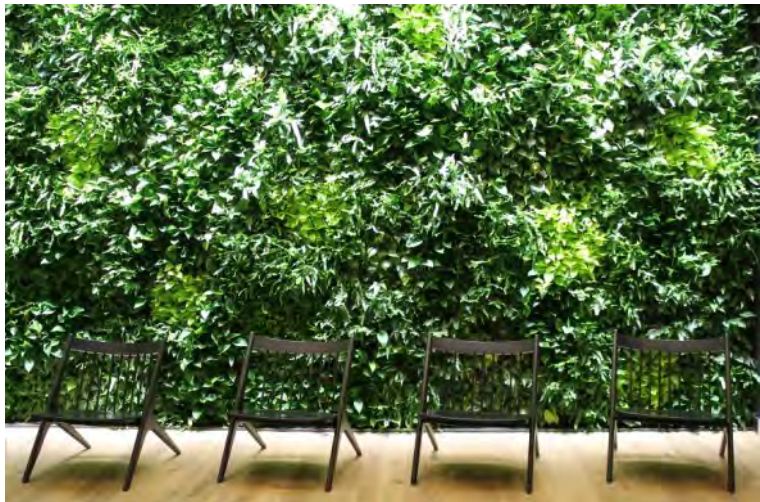
*Plants/flowers used:* 3,510 @ 4" Plants. Button ferns, Staghorn ferns, Peperomia, Victoria Birdsnest fern, Philodendron brasil, Philodendron lemon-lime, philodendron cordatum.

*Growers/brokers used:* Plant Marketing, Central Florida Ferns

*Containers used:* Green Living Technologies - Plug and Play Living Wall system

*Other materials used:* The lobby also features several Cityscapes Living Art features gaining popularity due to their unique form, appearance and sustainable quality compared to fresh flower arrangements.





## First Place, Green Walls \$100-\$10,000

# Metro Tropical Plant Co. for Constant Contact, Waltham, MA Headquarters

---

*Plants/flowers used:* Pothos "Neon," Janet Craig Compacta, Philodendron "Prince of Orange," Red Aglaonema, Echeveria

*Containers used:* Tropiculture, Bay State Farm Direct Flowers

*Other materials used:* Rigid Capillary Wicks





## Second Place, Green Walls, \$100-\$10,000

# Foliage Design Systems for Private Residence

---

*Plants/flowers used:* Nephthytis, pothos, red maranta, button fern, arboricola, various herbs, dracaena lemon lime

*Growers/brokers used:* Florico Foliage

*Containers used:* Suite Plants Live Picture I, II and III in charcoal color







## Third Place, Green Walls, \$100-\$10,000

# Kelly Mac Interiorscapes for Lovin' Oven

---

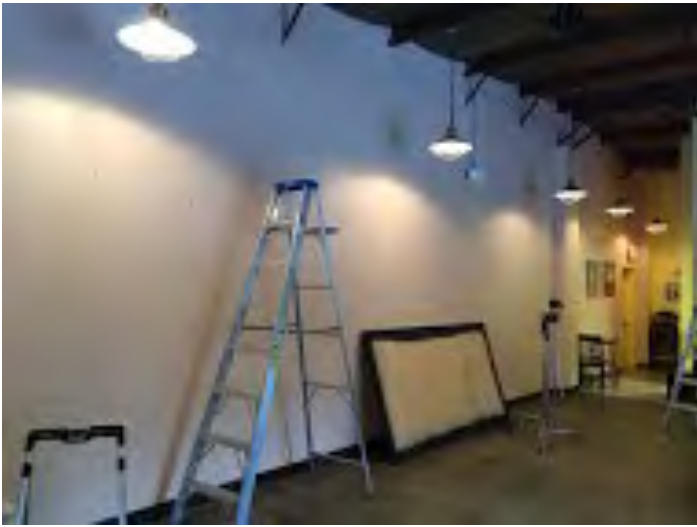
*Plants/flowers used:* Jade Pothos, Neon Pothos, JC Compacta, Spider Plant, Aglaonema, Philodendron Hybrid, Schefflera Amate Soleil, Croton Petra, Spath. All plants are 6".

*Growers/brokers used:* Custom Foliage Service, Capri Farms

*Containers used:* ASI Living Wall Planter Trays. PT-48, PT-24. Black Matte. Size of Wall is 18'W x 4'H

*Other materials used:* LED lighting fixtures with daylight color lamps were installed to provide supplemental lighting for the plants. Plant-Tech H2O hard wicks were used in all plants.





## First Place, Exterior Planting, \$100-\$10,000

# Growing Green Inc. for Kellwood's Fall

---

*Plants/flowers used:* 6 - #3 pygmy barberry, 2- #5 maiden grass, 6 - #3 green velvet boxwood, 16 flats of mixed pansies, 240 – 9" mums, white, yellow, purple, 238 – 9" kamome kale, red and white, 30 – 8" Swiss chard.

*Growers/brokers used:* Tomasovics Greenhouses & Nursery

*Containers used:* Existing beds and concrete built-ins

*Topdressing used:* Hardwood bark mulch, where needed





## First Place, Freestanding Containers, \$10,000-\$20,000

# Mimosa Interior Landscape for Lincoln Property Company – Kemper Lakes Business Center

---

*Plants/flowers used:* Kentia Palm, Phoenix Palm, Ficus Amstel King, Dracaena 'Limelight', Stromanthe Triostar, Cordyline 'Red Sister', Sansevieria 'Black Coral', Spathiphyllum varieties, Dracaena Marginata 'bicolor', Reflexa 'Song of India', Aglaonema 'Suzanne', Aglaonema 'White Rain', ZZ Plant, Neanthe Bella Palm, Neon Pothos, Orchid varieties, Blooming Flower Rotations

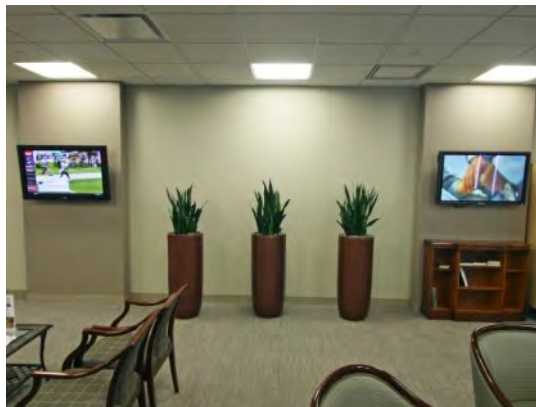
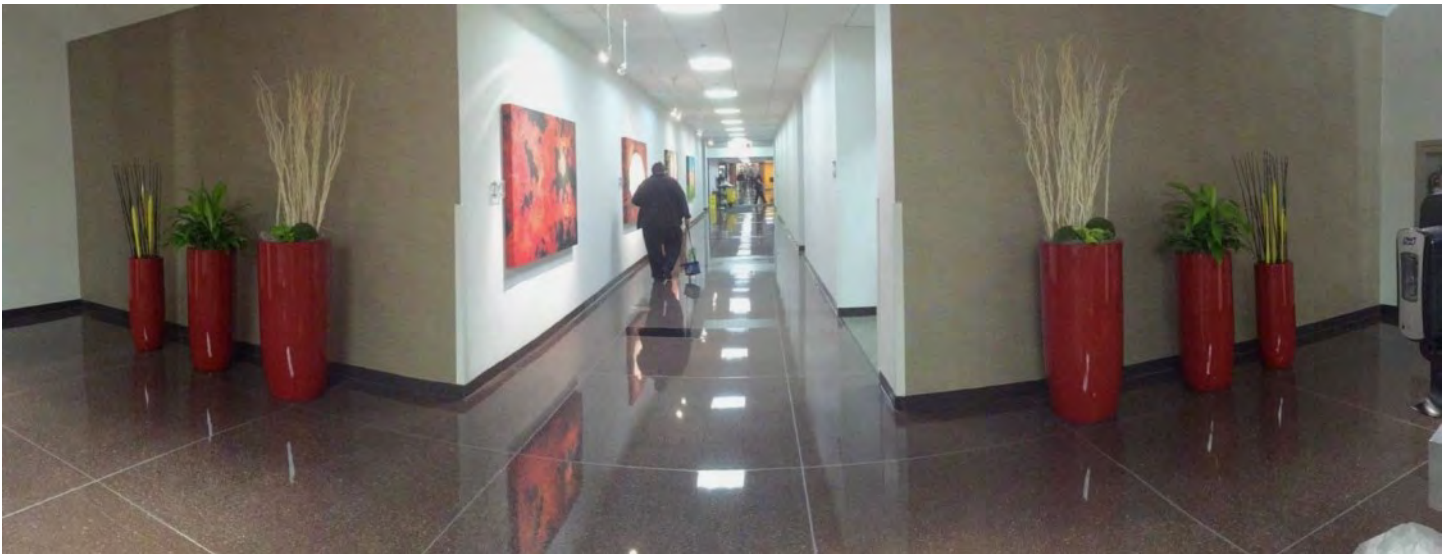
*Growers/brokers used:* Chicago Foliage

*Containers used:* Jay Scotts - 'Peypin', 'Brannan', 'Wannsee', 'St. Tropez' (from Midwest Tropicals); ASI 'Seashells' vases and bowls; and Lechuza 'Delta' & 'Cubico' (from NewPro). Colors are Bronze, Silver and Burnt Copper in lobbies; Cobalt Blue, Mustard Yellow, and Garnet Red in public dining room

*Topdressing used:* Spanish Moss and River Rock

*Other materials used:* Kuwa stems, moss spheres, Bamboo canes





## Second Place, Freestanding Containers, \$10,000-\$20,000

# Botanika Interior Plantscapes for Rancho Santa Fe Residence

---

*Plants/flowers used:* Kentia Palm, Fishtail Palms, Rhaps Palm, Fiddle Leaf Fig, ZZ plant, Aglaonema 'Silver Bay,' Dracaena 'Lisa,' Philodendron Cordatum 'Brasil,' Golden Pothos, Hoya 'Tricolor,' Assorted Succulents, Orchids, Bromeliads, and Anthurium

*Growers/brokers used:* California Greenhouses, Specimen House, Leucadia Nursery, Divine Orchids

*Containers used:* Wes Ceramics: Anzio Urn (Cocoa), Pescara (Cream). Canyon Pottery: Round Lip Pot (Black Clay). California Greenhouses: Tarzana baskets. Wholesale Flowers: Miscellaneous tabletop planters and vases

*Topdressing used:* Spanish moss on floor plants, pebbles on succulent arrangements, PolyPebbles/shells/ decorative gravel on orchid arrangements

*Other materials used:* Birch branches







## Honorable Mention, Freestanding Containers, \$10,000-\$20,000

# Botanicus for Holy Sepulchre Mausoleum

---

*Plants/flowers used:* Aralia Fabian. Ficus Alii. Aglaonema Spring snow, diamond bay, red Creta. Philodendron Brazil

*Growers/brokers used:* Farm Life, Capri Farms, Jensen Nursery

*Containers used:* ASI. Burnt Copper finish Phoenix cylinders

*Topdressing used:* Philodendron brazil, red Creta





## Third Place, Freestanding Containers, \$10,000-\$20,000

# Texas Tropical Plants, Inc. for 301 Congress Avenue

---

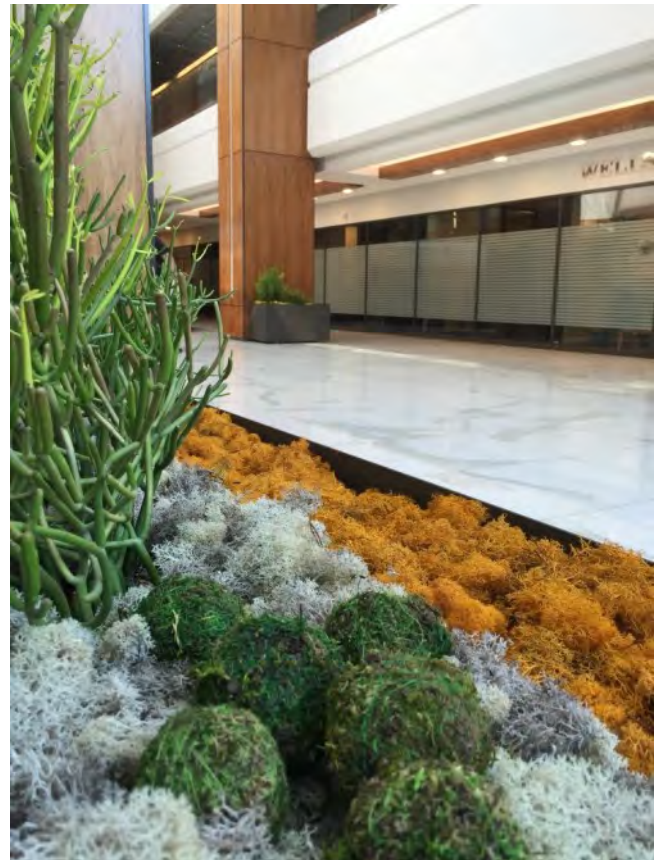
*Plants/flowers used:* Multiple variety of Euphorbia, Barrel Cactus, Hydrangea, Kalanchoe, Phalaenopsis Orchids, Kalanchoe thrysifolias, Sansevieria trifasciata 'Moonshine', Anthuriums, ornamental Kale, and pine cones.

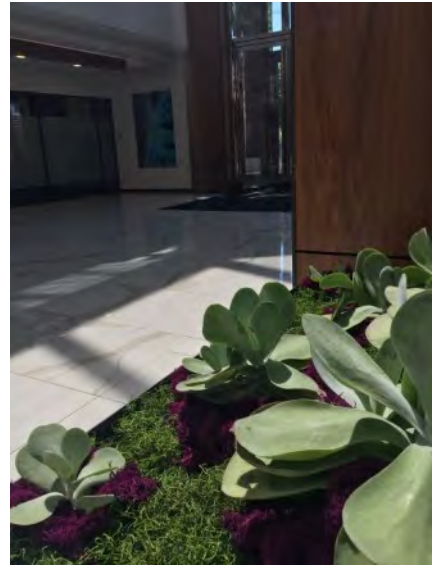
*Growers/brokers used:* SuperMoss was used to provide the reindeer moss

*Containers used:* Ekitta Containers, CADDO, Urbane Bronze custom color selection

*Topdressing used:* Reindeer moss, in drastic shades and styles, was an essential element used in the transitions each month

*Other materials used:* Driftwood, moss balls, pine cones, pumpkins, and fall leaves





## First Place, Freestanding Containers, \$100-\$10,000

# Texas Tropical Plants for Atlassian

---

*Plants/flowers used:* Interior – Ponytail Palm, Marginata, Pothos, Phil Congo Rojo, Air Plants, Pothos N 'Joy, succulents, Sanseveria Bantel, Ficus Lyrata. Exterior – Wandering Jew, Asparagus Fern, Juniper, Mondo Grass, Lantana, Candelaria, Kalanchoe Thrys., Jasmine, Cacti, Herbs, Citrus, Bulbine

*Growers/brokers used:* Horticultural Sales, Barry James, Tillery Street Nursery, East Side Succulents

*Containers used:* ASI – Symmetry. Jay Scotts- River Rock, Milan, Hayden, Potsdam, Milano, Malaga. Slide Design – Bamboo Round. Planterworx- Square, Novelty. Texas Tropical also built wood planters and custom welded metal. Pottery and Fountain sourced from Miguel's Imports

*Topdressing used:* Rock, Mulch, Reindeer Moss, Spanish Moss





## Second Place, Freestanding Containers, \$100-\$10,000

# Moore Landscapes, Inc. for Textura, One Prudential Plaza, Chicago, IL

---

*Plants/flowers used:* Pachira Money tree, Zamia Zamifolia, Guatemalan Pony Tail palm, Dracaena Goldstar, Epipremnum Pothos, Croton, Sedum, Orchids.

*Growers/brokers used:* Midwest Tropical, Kennecott, Clesens

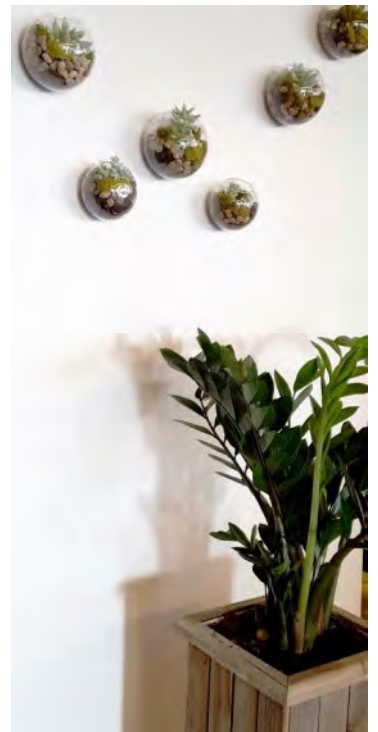
*Containers used:* Alum. rectangle planters, weathered wood planters, birch planters, glass globes

*Topdressing used:* Reindeer moss, driftwood, small boulders and sphagnum moss

*Other materials used:* Birch branches, replica orchids, Anthuriums, and moss and vine balls, replica seasonal stems like forsythia, fall stems, berries, and evergreens depending on the season







## Third Place, Freestanding Containers, \$100-\$10,000

# BATCH-O BLOOMS for University of the Sciences

---

*Plants/flowers used:* Rhaps Palms, Lime Light Janet Craig's, Janet Craig Compacta, Neon Pothos, Liriope, Red Cordyline

*Growers/brokers used:* Morning Dew Tropical Plants

*Topdressing used:* Shredded Cedar Mulch

*Other materials used:* Pro-Mix Soil, Skid Resistant Heavy Gauge Plastic as liner. Holiday – Norfolk Island Pines, Poinsettia's, Cone Tree's, Ornaments, Branches





## Honorable Mention, Freestanding Containers, \$100-\$10,000

# Cityscapes Inc. for CBRE New England, 100 High Street

---

*Plants/flowers used:* Philodendron Selloum, Dracaena Reflexa Pleomele, Beaucarnea Recurvata - Ponytail Palm, Agave, Anthurium 'Ruffles', Cycas Revoluta – King Sago Palm, Succulent (various 4" rotation)

*Growers/brokers used:* Morning Dew Tropical Foliage, Elgreen Orchid Boston

*Containers used:* Fleur Ami – 'Beach' with 'Teak' Pedestal. Fleur Ami – 'Natura Elcano'. Fleur Ami – 'Natura Donut

*Topdressing used:* Polished Black Stone





## First Place, Atrium, \$100-\$10,000

# BATCH-O BLOOMS for Spring Valley YMCA

---

*Plants/flowers used:* Existing Ficus Tree (we pruned), Lime-Light Janet Craig, Neon Pothos, Janet Craig Compacta, Rhaps Palm, Neanthe Bella Palms

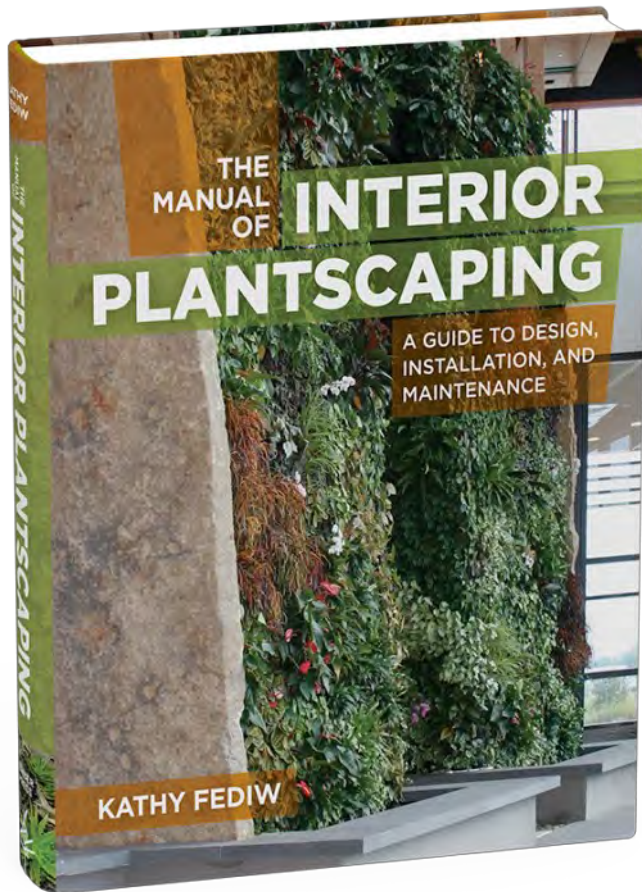
*Growers/brokers used:* Morning Dew Tropical Plants

*Topdressing used:* Shredded Cedar mulch

*Other materials used:* An additional 35 cu. ft. of Pro-Mix added to the existing soil to bring level higher.







# The Manual of INTERIOR PLANTSCAPING A Guide to Design, Installation and Maintenance

Published by Timber Press

Hard cover, 248 pages

Filled with full-color photographs

Signed copies for just \$49.95

Quantity Discounts available

**THE PERFECT LEAVE-BEHIND FOR DESIGNERS AND ARCHITECTS**

## All new book By Kathy Fediw

*The Manual of Interior Plantscaping* shows you how to design all the major types of interior plantscapes—atriums, indoor gardens, green walls, potted office plants, and miniature displays like dish gardens. You'll learn basic design principles and the mechanics behind a successful interiorscape, as well as how to maintain and care for indoor plants, with tested information on watering practices, pruning, plant nutrition, and preventing pests and diseases. Profiles of the 60 best indoor plants will help you design a plantscape that is both functional and beautiful for years to come.

**TO ORDER CLICK HERE!**

All orders include **free personalized signature** by the author when ordered at [www.InteriorscapeConsultant.com](http://www.InteriorscapeConsultant.com)

Books ship by Priority Mail. For quantity discounts: [Kathy@InteriorscapeConsultant.com](mailto:Kathy@InteriorscapeConsultant.com).)





**Peachtree Plants** would like to thank our valued Reps and Vendors who provided materials for these projects:

- Dinah Jacobs; DJ Christmas Lady & Vickerman
- Greg Watson; K&K Interiors
- Autograph Foliages
- Amanda Tomerlin; Lion Ribbon
- MeraVic International
- Nickie Sfamenos; Regency International



- Buffy & Jennifer; Alpha Fern
- Patric Lee; Kennicott Brothers
- Cut Flower Wholesale
- Amanda Tomerlin; Lion Ribbon

SPECIAL BIG THANKS to our GREAT HOLIDAY & FLORAL TEAMS for all their diligent work bringing these projects to life!!!

## Safety Manual

# Safety First

A Safety Guide for  
Interiorscapers

By Kathy Johnson Fediw, LEED AP ID+C, CLP, CLT



[www.interiorscapeconsultant.com](http://www.interiorscapeconsultant.com)

- With 21 Safety Topics specifically for Interiorscapers
- Handouts, quizzes and answer sheets
- Use for tech meetings, training and to fulfill client safety requirements
- Delivered to your email inbox as a PDF file, make as many copies as you wish
- Our flagship publication and still one of our best!

**Order yours today! [CLICK HERE](#) or [www.interiorscapeconsultant.com](http://www.interiorscapeconsultant.com)**

## First Place, Floral, \$100-\$10,000

# Peachtree Plants for Rustic Natural Wedding

---

*Plants/flowers used:* Queen Anne's Lace Green Mist-70, Scabiosa Pods, Veronica Caya, Anemone, Ranunculus, Gerbera White with Black Eye, Dianthus Green Wicky, Salal, Italian Ruscus, Ivory Roses, Quicksand Roses, Echeveria in small, medium and large sizes, Hanging green amaranthus, Bells of Ireland, Eucalyptus Baby Blue, Phlox White, Albilora, Polygonatum Variegatum, Snake Vine, and Plumosus with Green Ivy garland. 8-14"- braided ficus benjamina. 6-14" Areca Palms. 6-10" Boston Ferns

*Growers/brokers used:* Alpha Fern, Cut Flower Wholesale, Kennicott Brothers, Capri Farms, Florida Indoor

*Containers used:* Kennicott Brothers – drift wood pieces, wooden stump bases. A&B Floral – Lanterns in a variety of shapes and sizes

*Topdressing used:* Reindeer moss where needed

*Other materials used:* Claw foot ceramic tub, Wooden Signs welcoming guests, Chalkboard Seating Sign, Marquee Letters spelling out LOVE, wood basket containers for Ficus Trees and Areca Palms, Burlap and Lace Bows, LED battery operated Candles, Wooden Antique Crates.





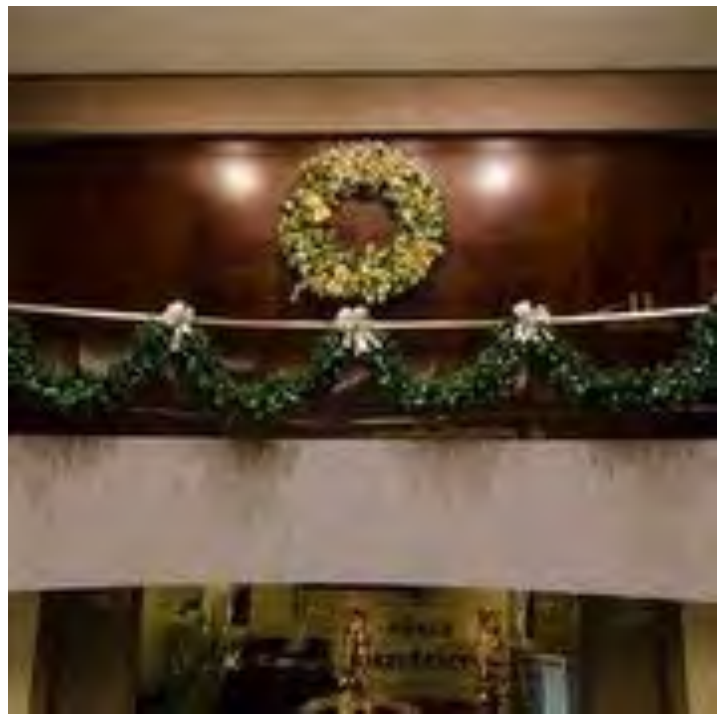
## First Place, Holiday, \$40,000+

# Peachtree Plants for Riverwood 100

---

*Growers/brokers used:* Holiday Décor from Vickerman, K&K Interiors, Meravic, Lion Ribbon, Regency, Autograph Foliage

*Other materials used:* 1-96" Grand Teton Wreath, 1-18' Grand Teton LED Frame Tree, 2-9' Carolina Pencil LED Trees, 3-7.5' Cashmere Slim LED Trees, 150' -18" Grand Teton LED Garland, 36-12" Resin Violins, 16-28.5" Resin Violins, 48-Bronze Bell Clusters in 5", 4.5", and 3", 16-12.5" French horns, 24-13" Gold trumpets, 2- sets of 3 Champagne Glitter wire cages in various sizes, 60- Silver Glitter Music Symbols, and other various shape and sized ornaments in Gold, Antique Gold, Silver, Champagne, Platinum, Rose Gold and Green. Assorted spray pics were also used in mix metal colors.





First Place, Holiday, \$30,000-\$40,000

## BATCH-O BLOOMS for Two Liberty Place

---

*Other materials used: 36" Diameter Ornaments, Flocked Life-like Trees, 14' Life-Like Tree's*





## First Place, Holiday, \$20,000-\$30,000

# Moore Landscapes, Inc. for 200 S. Wacker, Chicago, IL

---

*Plants/flowers used:* 8" and 10" Red Poinsettias

*Growers/brokers used:* Clesens

*Containers used:* Autograph, GKI, Midwest Tropical, Kennecott. Brushed Gold Vista containers

*Topdressing used:* Snowdrift blanket

*Other materials used:* 15', 12', 7' full trees, 9' and 7' slim trees. Oversized decorated gift boxes in an authentic sleigh circa 1892, complete with leather horse reins. 5' white birch branches, lit LED. 4-5' brown faux wood deer, 4' grapevine balls. Gift wrapped columns with decorated swags. 48" and 36" wreaths, Evergreen garland

*Photography:* Stuart Van Dorm, Shure Corporate Photographer







## First Place, Holiday, \$10,000-\$20,000

# Cityscapes Inc. for Boston Park Plaza Hotel

---

*Containers used:* Architectural Supplements Inc.

*Other materials used:* Oversized acrylic gift boxes. Over 500 acrylic Snowflake Ornaments. Lit and Decorated Garland. Black, Pewter and Gold Color scheme





## First Place, Holiday, \$100-\$10,000

# Moore Landscapes, Inc. for Shure, Niles, IL

---

*Plants/flowers used:* White Poinsettias

*Growers/brokers used:* Midwest tropical plants, Clesens

*Containers used:* ASI, Kennecott, LED lights

*Topdressing used:* Snowdrift Blanket and Lame'

*Other materials used:* 'Puttin' on the Ritz' theme of gold, silver, pewter and ivory. 48" up to 86" Obelisks wrapped with decorated garland. Phoenix Gloss Black containers filled with poinsettias and trees. Spinet piano painted gloss black, 12-14" garland, 5'-9' pre-lit LED trees. Custom arrangements from table top vases to 36" long for file tops.





## Second Place, Holiday, \$100-\$10,000

# Kelly Mac Interiorscapes for NYC Reception Area Holiday

---

*Plants/flowers used:* Poinsettias

*Growers/brokers used:* Summit Plants & Flowers

*Containers used:* Lechuza Classico. Black Gloss

*Other materials used:* 9' holiday tree, silk poinsettias, velvet poinsettias, sugar pine cones, organza fabric, wired ribbon, faux coral branches, white paper cone trees.





## Third Place, Holiday, \$100-\$10,000

# Moore Landscapes, Inc. for Woodfield Corporate Center, Schaumburg, IL

---

*Plants/flowers used:* Pink Poinsettias, Christmas Cactus

*Growers/brokers used:* Midwest Tropical Plants, Clesens

*Containers used:* ASI Phoenix, Kennicott, Superior

*Topdressing used:* Snowdrift Blanket, Lame', Scattered snowflakes

*Other materials used:* 9' Pre lit LED trees, 42" Polished Aluminum stands with glass vases. Menorah on pedestal with draping. 48" and 60" wreaths. 9' garland. Hanging ornament stars







# EFIG Award Winners 2016

The European Federation of Interiorscape Groups celebrated their 15th anniversary and the winners of their design contest. The following are some of their top winning entries.



## **Gold Leaf Award winner Indoor Garden Designs - Special Events**

### **The Poisonous Pawtanical Garden (all about plants that are poisonous for cats and dogs)**

Working with Cow PR's Client, MoreThan Insurance, Interior Garden Design was set with the task of creating a temporary garden that was considered to be the temperate world's most dangerous garden to cats and dogs, using plants that are seen in any home garden in the United Kingdom. This was to launch MoreThan's new 'Pet Safe Campaign'.



## **Gold Leaf Award winner Open Green House Project by The Joy of Plants**

This 2 day event demonstrated how plants can work within the house. The aim of the project was to transform a North London town house into a gallery of plants, showing how versatile plants can be and how they can feature in all rooms of the house, working with all kinds of budgets. All plants used were chosen from the Flower Council's 'House Plants of the Year' and IGD's creative team were let loose!



## **Gold Award winner Urban Planters Cheshire for AstraZeneca (pharmaceutical company)**

19 large and medium fixed planters, built in beds and floor standing oak planters. Large moss wall. Planting frames the main employee thoroughfares on both ground and first floor areas and two 5.5m trees welcome all people who visit this building.



**Gold award winner Urban Planters Cheshire - Regatta (corporate building)**

90 floor and desk standing planters with 12 large ficus trees being sunk into the floor ranging between 2.2 and 5.5m tall. 2 green walls 1 preserved and one live externally.

Throughout the building, the overarching planting design creates the look and feel of the outdoors. Four companies are using the building, each of their spaces has distinct brand identity.



**Gold Award winner Plant Designs for Novae Group Placc (insurance)**

Design of built in beds throughout the office space. Planters are part of the screening and storage units that split the large open plan space into smaller work areas, giving people some privacy and space of their own.



**Gold award winner Nature at Work for Baxalta UK Ltd (biopharmaceuticals)**

Scheme is a combination of bespoke planters, built-in planters and artificial and real plants. Artificial grasses form a base of the feature wall. Also included are 38 top cabinet displays, 3 large statement crackled pots and 53 units in total.

*Continued on the next page*





**Gold award winner UP Oxford - McArthur Glen Designer Outlet Swindon (maintenance)**

Service starting date: December 2014

The building is vast, the ceilings are very high, the centre's temperature fluctuates. The plants can get affected by members of the public and the elements

When Urban Planters took this site over they replanted the beds and installed some new displays. The built-in planters had bespoke liners made in glass fibre to make them watertight which were made and fitted in situ.

They use different colours to complement the seasons: Red – Winter for Christmas, Yellow – Spring, Purple – Summer, Torch – Autumn

# **NO SWEAT!**<sup>TM</sup>

**WATERPROOF LINERS**

**Flexible stand-up waterproof liners  
fit round AND  
square shapes**



Recommended for  
direct planting and  
hydroculture applications

**Click  
Here!**

**1.888.222.4341**

**www.nosweatliners.com**

# Recruit, Interview, Hire and Motivate The Best!



## Hire and Train to Win

*For Interior Plantscapers only!*

The complete system for recruiting, interviewing, evaluating, hiring, counseling and getting your people off on the right start.

By Kathy Fediw, LEED AP ID+C, CLP, CLT  
Johnson Fediw Associates



## Manual & CD

This program will help you save time and money by teaching you how to screen applicants and interview more effectively, while keeping your current employees motivated.

**Interview questions and tips**  
**Screening questions to ask on the phone**  
**Career path templates**  
**Disciplinary procedures and forms**  
**Detailed job descriptions, including physical requirements, to use for interviewing and back-to-work programs.**

And more!

To order, **CLICK HERE** or visit  
[Www.InteriorscapeConsultant.com](http://Www.InteriorscapeConsultant.com) (under Books)

# Online Any Time Training for your Staff!



## Online Any Time Training!

Includes narrated PowerPoint Flash presentations, handouts, graded quizzes, virtual classroom for discussions

**CLICK HERE** to register

Or email [Kathy@JFAConsultingBiz.com](mailto:Kathy@JFAConsultingBiz.com)  
See our other online courses [HERE](#)

## Customer Service

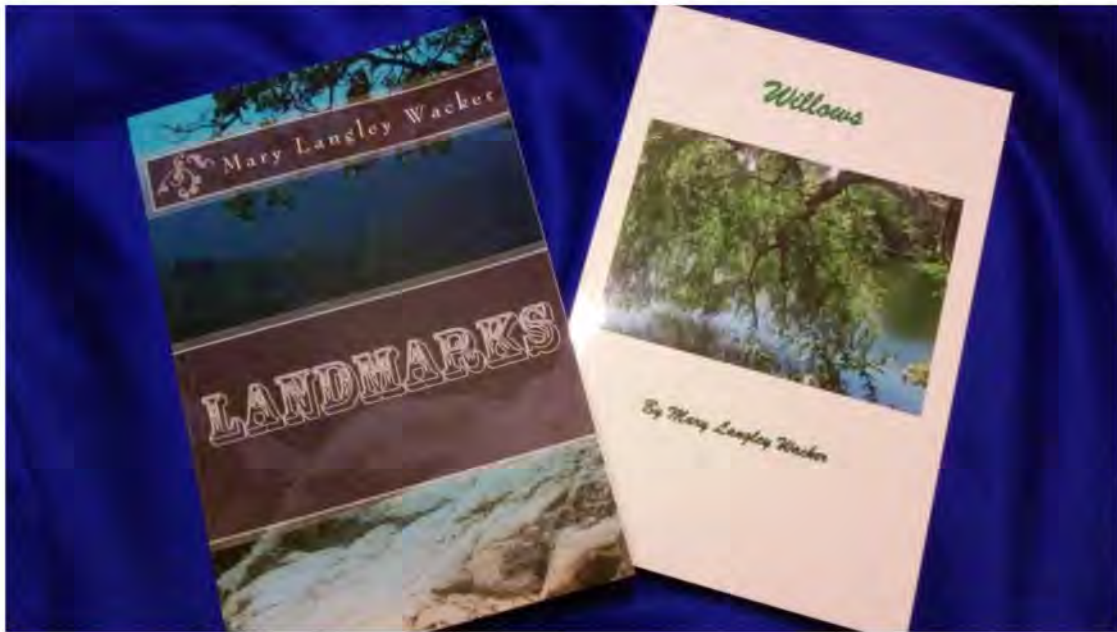
6 Sessions, 1 hour total

**Unlimited Viewing** for your whole team!

This program pays for itself with the first account that doesn't call you or cancel!

Includes:

What Customers Really Want  
Answering Complaints with the ALERT Method  
Working in Difficult Situations  
Business Etiquette and Relationships  
8 Things to Never Say  
Preventing Cancellations



*If you enjoy “Eve’s” adventures, you will enjoy the adventures of her great-grandfather, Darwin, who struck out alone across the prairie when he was fourteen. His journey and his search for a home are recounted in Mary’s first book, Landmarks.*

*In her second book, Willows, Darwin retraces his steps to make amends for his earlier mistakes. He seeks forgiveness, but finds he must also forgive to make a life with the girl he left behind.*

*Either book, \$12.95 each, or both for \$20.00.*

*Free shipping!*

*Email: [marysgardengate@cox.net](mailto:marysgardengate@cox.net)*

*Also available on EBay*

**Spring has SPRUNG at**



**morning  
dew**  
TROPICAL PLANTS



**Your one-stop source for  
Florida's finest tropicals!**

**[www.morningdewtropical.com](http://www.morningdewtropical.com)**



## PRESS RELEASE

### **Dr. Terril Nell and Janice Goodman to be Inducted into the AmericanHort Interior Plantscape Hall of Fame**

The lifetime achievements of Dr. Terril Nell, Professor Emeritus University of Florida, and Janice Goodman, Cityscapes, Boston, will be recognized by AmericanHort at Cultivate'16, July 9-12, in Columbus, Ohio. Honoring their contributions to the development of the interiorscape industry, the two industry leaders will be inducted into the Interior Plantscape Hall of Fame during the Plantscape Awards Celebration on Sunday, July 10.

The AmericanHort Interior Plantscape Hall of Fame (formerly known as the PIA Interior Plantscape Hall of Fame) was established to honor individuals of integrity whose personal dedication provide great leadership in the development and growth of the interiorscape industry. Individuals nominated must have contributed for a minimum of 15 years to the development and permanent betterment of the interiorscape industry.



**Dr. Terril A. Nell** is Professor Emeritus of Floriculture at the University of Florida. He served as Chair of the Environmental Horticulture Department from 1991–2012, and he was Professor of Floriculture from 1977–2012. He retired from the University of Florida in 2011. His research program focused on the production and postharvest handling of flowering potted plants and fresh cut flowers. He developed the University of Florida Postharvest program in 1983 that concentrated on potted plant and cut flower performance for growers, shippers, wholesale and retail florists, and interior plantscapers. His research results have led to changes in floral industry practices leading to improved flower and plant longevity. He has served as an industry consultant for growers, wholesalers, and retailers nationally and internationally for 25 years.



**Janice Goodman**, with 34 years of experience in the horticultural industry, is the president of Cityscapes Inc. She is in her 24th year as owner and operator of Cityscapes, and has built the business into one of the largest interior/exterior landscape companies in the New England area, and one of the 15 largest interiorscape companies in the United States with annual sales revenues over \$5 million. She is a registered provider for the AIA/CES (American Institute of Architects Continuing Education System) and BOMI (Building Owners Managers Institute), offering educational credits and programs to the architectural industry and commercial property professionals. She has served on the Board of Directors for “Green Plants for Green Buildings,” as the chairperson of the TPIE Short Course committee, and on the Mid-Atlantic committee.

All are encouraged to attend the Plantscape Awards Celebration and dinner to raise a toast of appreciation to these two industry leaders. The Celebration event will also include the presentation and celebration of winning entries in the International Plantscape Awards program. Tickets to the Celebration can be purchased at [Cultivate16.org](http://Cultivate16.org).

Nominations for the 2017 Interior Plantscape Hall of Fame are currently being accepted. Complete information about the Hall of Fame program may be found at [AmericanHort.org/Plantscape](http://AmericanHort.org/Plantscape).

AmericanHort was formed in 2014 by the consolidation of the American Nursery & Landscape Association and OFA – The Association of Horticulture Professionals. With a combined history of 220+ years, AmericanHort supports nearly 16,000 member and affiliated businesses that include breeders, greenhouse and nursery growers, garden retailers, distributors, interior and exterior landscape professionals, florists, students, educators, research, manufacturers, and all of those who are part of the industry market chain. Our mission is to unite, promote, and advance the horticulture industry through advocacy, collaboration, connectivity, education, market development, and research.



# UPCOMING EVENTS

## July 2016

July 9-12, 2016: Cultivate'16, educational sessions and trade show by AmericanHort, Columbus, OH. For more information go to [www.AmericanHort.org](http://www.AmericanHort.org)

July 11, 2016: Renewal and Remembrance, annual day of service at the Arlington National Cemetery, Washington, DC, sponsored by NALP. For more information go to [www.landscapeprofessionals.org](http://www.landscapeprofessionals.org)

July 11-15, 2016: **efig's** National Indoor Plant Week, the United Kingdom, sponsored by **efig**. For more information go to <http://www.efig.co.uk/index.php/national-plants-at-work-week>

July 21-23, 2016:  
2016 Hawaii MID-PAC conference and expo, sponsored by Hawaii Export and Nursery Association, Hapuna Beach Prince Hotel, Big Island of Hawaii . For more information go to [www.HENA.org](http://www.HENA.org)

## September 2016

September 19-23, 2016: National Indoor Plant Week, a grass roots event founded by Mark Martin at Interior Tropical Gardens. For more information go to <http://www.nationalindoorplantweek.com/about.php>

To have your event listed here free of charge, email [Kathy@InteriorscapeConsultant.com](mailto:Kathy@InteriorscapeConsultant.com)

The advertisement features a large, green, cylindrical AquaMate watering tank mounted on a silver metal cart with two large black wheels. A white hose is connected to the top of the tank, leading to a white rectangular planter box containing a green plant. A green tool bag with various tools is hanging from the side of the cart. The background is a scenic view of a waterfall cascading over rocks into a pool of water, with a rainbow visible in the mist. The text is overlaid on the image in white and black.

**AQUA Mate**  
A man-made wonder  
that rivals nature.

It's no wonder that for nearly 25 years more plant care professionals have chosen AquaMate as their portable watering system. Beauty. Strength. Longevity. AquaMate.

**800-726-9889**  
FAX: 800-677-2282 [www.aqua-matics.com](http://www.aqua-matics.com)

# Green Earth-Green Plants® Certification for Interior Plantscape Businesses



## Appeal to your eco-friendly clients!

Get your business certified as eco-friendly.

*Independent third-part certification, developed by a LEED AP ID+C professional.*

Based on industry and government standards.

Includes products used, plant care practices, water and energy conservation, and more.

**INCREASE YOUR SALES WITH THIS ADD-ON VALUE!**

**[CLICK HERE](#) for more information**

Or call 281-687-6966



# Safety First

A Safety Guide for  
Interiorscapers

By Kathy Johnson Fediw, LEED AP ID+C, CLP, CLT



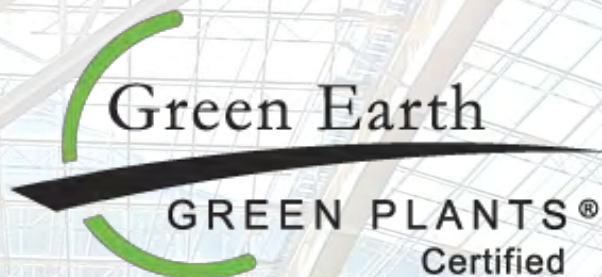
[www.interiorscapeconsultant.com](http://www.interiorscapeconsultant.com)

## Safety Manual

- With 21 Safety Topics specifically for Interiorscapers
- Handouts, quizzes and answer sheets
- Use for tech meetings, training and to fulfill client safety requirements
- Delivered to your email inbox as a PDF file, make as many copies as you wish
- Our flagship publication and still one of our best!

Order yours today! **CLICK HERE** or  
[www.interiorscapeconsultant.com](http://www.interiorscapeconsultant.com)





**CLICK HERE**  
for  
more information

## Join the growing number of companies becoming Green Earth-Green Plants Certified Businesses!

### Arizona:

[Plant Solutions, Inc. IP](#)  
Scottsdale, AZ  
Phone: (480) 585-8501  
Owner: Joe Zazzera, LEED AP, GRP

[McHenry Plantation, Inc. IP](#)  
Phone: (714)689-9992  
Owner: Nicole McHenry

### California:

[Good Earth Plant Company, Inc. IP](#)  
**Silver Level**  
San Diego, CA  
Phone: (858) 576-9300  
Owner: Jim Mumford, GRP, CLP

[Growing Roots IP](#)  
Long Beach, CA  
Phone: (562) 773-7027  
Owner: Jennifer Bermudez-Perez

[McHenry Plantation, Inc. IP](#)  
Costa Mesa and San Diego, CA  
Phone: (714)689-9992  
Owner: Nicole McHenry

[Steve Wolff & Associates, Inc. IP](#)  
Villa Park, CA  
Phone: (714)282-1155  
Owner: Steve Wolff

### Colorado:

[Design Perfected, Inc. IP](#)  
Denver, CO  
Phone: 303-817-8070  
Owner: Patty Seabolt

### Connecticut:

[Atria, Inc. IP. Platinum Level](#)  
Cheshire, CT  
Phone: 203-753-6200  
Owner: Bruce Crowle

### Florida:

[PLANTZ, Inc. IP](#)  
Tampa, FL area  
Phone: (813)258-1940  
Owner: Steve Stanford

### Illinois:

[Interior Tropical Gardens IP](#)  
Huntley, IL (Chicago area)  
Phone: (866)427-5268  
Owner: Mark Martin

[Mimosa Interior Landscape IP](#)  
Elk Grove Village, IL (Chicago area)  
Phone: (847) 545-1800  
Owners: Paul Zaccarine and David Biggus, CLP

[Phillip's Interior Plants & Displays](#)  
Oak Brook, IL (Chicago area)  
Phone: (630) 954-3600  
Division Manager: Jean Berg

[plants inc IP](#)  
Chicago, IL  
Phone: (773) 478-8208  
Contact: Jane Rodgers

### Maryland/DC area:

[Interior Plantscapes, Inc. IP](#)  
Laurel, MD  
Phone: (301) 498-5028  
Owner: Sandra Mobley

### Minnesota:

[Office Greens, LLC IP, Silver Level](#)  
Shakopee, MN (Minneapolis area)  
Phone: 612-396-4856  
Owner: Abe Quiring

### New Jersey:

[Raimondi Horticultural Group, Inc. IP](#)  
Ho-Ho-Kus, NJ and New York/New Jersey/PA areas  
Phone: 201-445-1299  
Owner: Chris Raimondi

### North Carolina:

[Foliage Concepts IP](#)  
Asheville, NC  
Phone: (828) 253-2888  
Owner: Les Love

### Pennsylvania:

[Hoffman Design Group, Inc. IP](#)  
Philadelphia/New York/Delaware  
Phone: (800) 550-3655  
Owner: Bryan Hoffman

### South Carolina:

[Foliage Concepts IP](#)  
Spartanburg, SC  
Phone: (864) 576-9186  
Owner: Les Love

### Texas:

[Green Oasis Plantscapes, Inc. IP](#)  
San Antonio  
Phone: (210) 653-8900  
Owner: Mike McAbery

[Plant Interscapes, Inc. IP](#)  
Most major cities  
Phone: (210) 696-4003  
Owner: Mike Senneff

[Silversand Services, Inc. IP](#)  
Houston, TX  
Phone: (713) 722-0336  
Contact: Lisa Hathaway

### Virginia:

[Buckingham Greenery IP](#)  
Buckingham, VA  
Phone: (434) 969-4711  
Owner: Connie Hom

[Greatscapes & More IP](#)  
Richmond, VA  
Phone: (804) 657-7080  
Owners: Meg and Rob Watson

\*IP: Interior Plantscape



## Plant Advocacy that Influences Decision Makers

We help you get in front of architects, interior designers, building owners and managers, and LEED APs to educate them about the many health and productivity benefits of indoor plants.

**July 12**



### Become a GPGB Registered Trainer at Cultivate'16

**Separate registration is required.**

Tuesday, 8 am - 12 pm in Columbus, OH

**Register by JUNE 28 & Save \$50**

**Registration includes:**

PowerPoint CEU presentations, Speakers' Scripts, White Papers, all the forms for your CEU presentations PLUS ongoing administrative support from GPGB.



**Instructors are GPGB board members:**  
Jim Mumford, Good Earth Plant Co. & Greenscaped Buildings (left), San Diego, CA and Joe Zazzera, Plant Solutions, Phoenix, AZ.