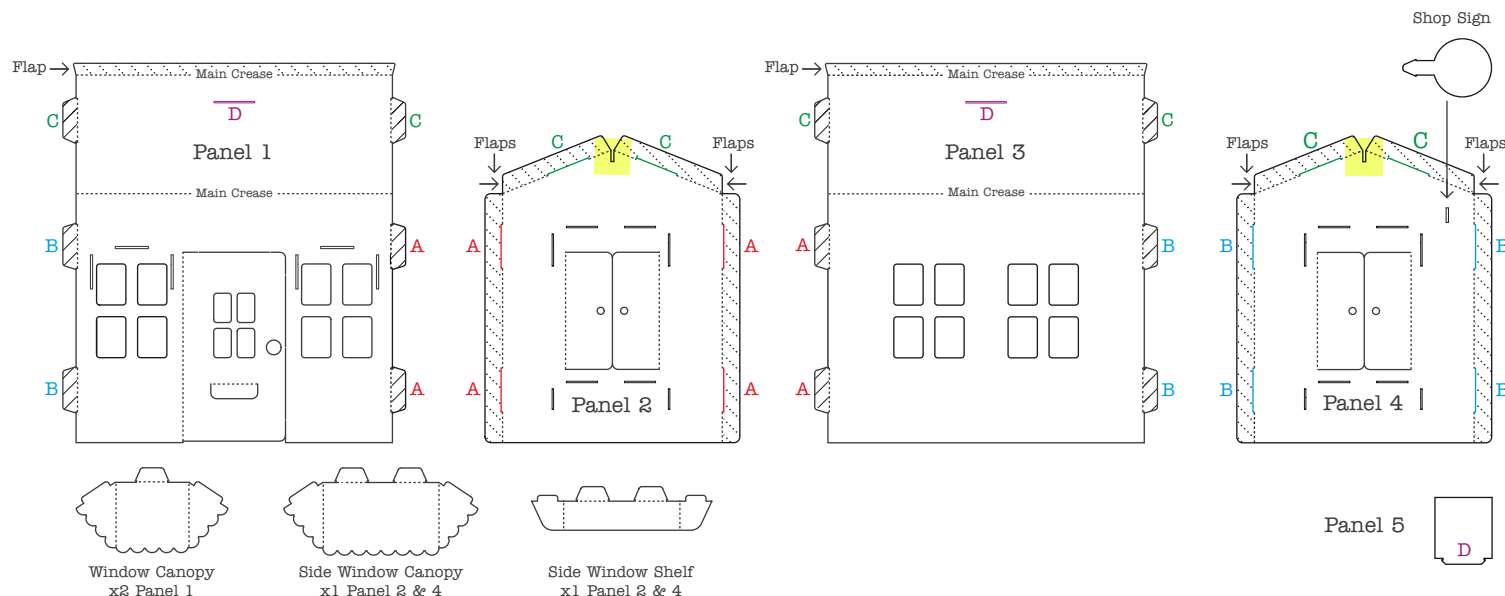
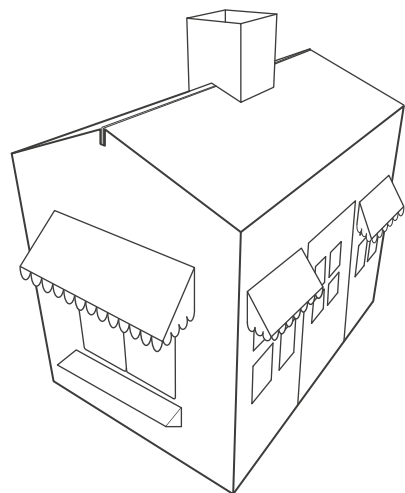


Shop Assembly Instructions



Please read the instructions in full before assembly and note that all creases have been pre-folded.

Step 1. Take Panel 1 and Panel 3 and interlock all **A** Tabs into the **A** Slots on Panel 2, creating a U shape. Push Tabs until they are securely locked into the Slots.

Step 2. Take Panel 1, 2 and 3 and interlock all **B** Tabs into the **B** Slots on Panel 4. Push Tabs until they are securely locked into the Slots.

Step 3. Once all the **A** and **B** Tabs and Slots are interlocked, fold both the roof sections down, interlocking all **C** Tabs into the **C** Slots, tucking in the section highlighted in yellow.

Step 4. Fold the Chimney into a square and push the **D** Tabs into the **D** Slots of the roof. You can now add the window canopies, hatch canopies and window shelves. Push the Tabs into the Slots securely locking them into place.

Step 5. Your Playhouse is now ready ! Decorate it with Wax Crayons or Felt Tip Pens and enjoy !

