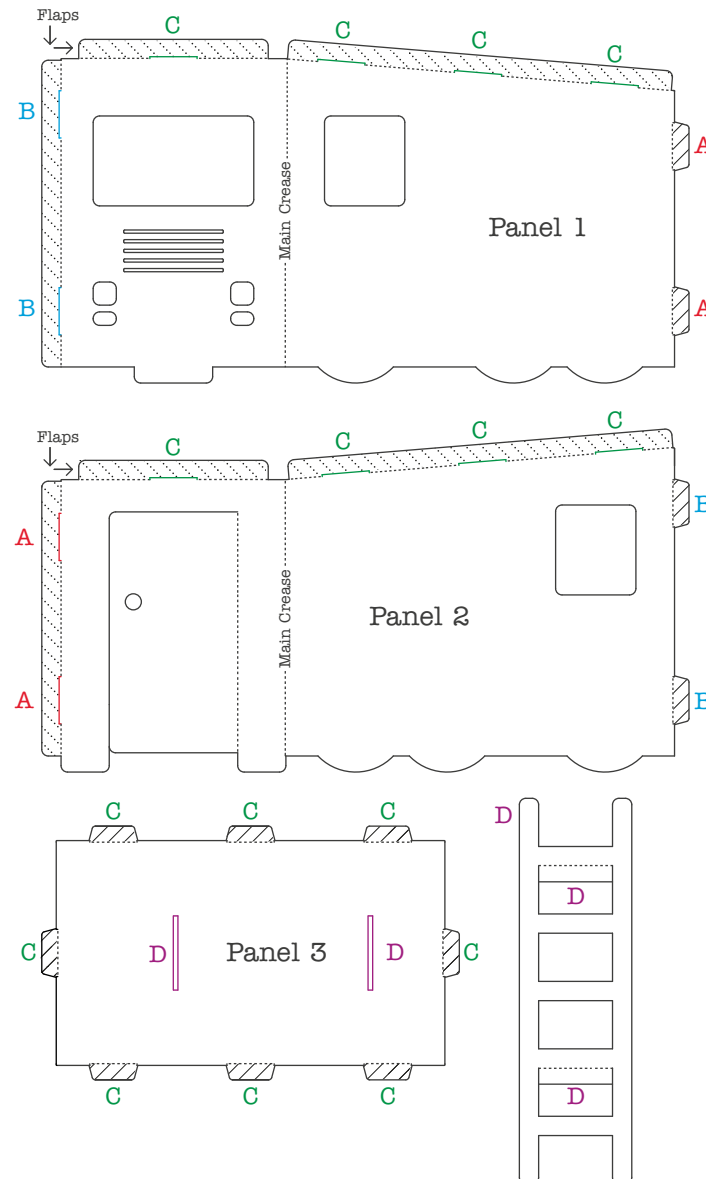
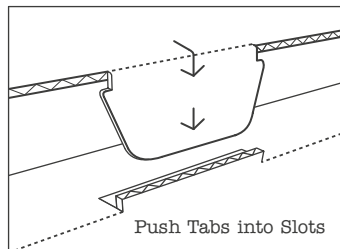
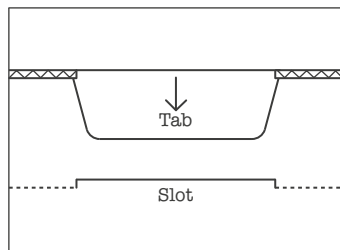
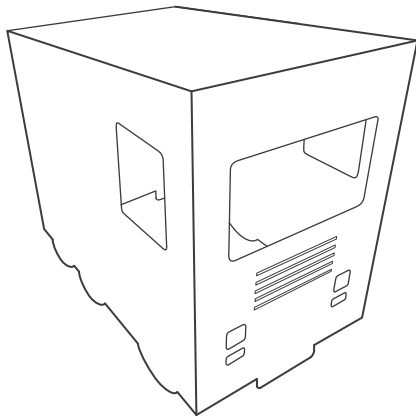


# Fire Engine Assembly Instructions



Please read the instructions in full before assembly and note that all creases have been pre-folded.

**Step 1.** Take Panel 1 and fold the main crease at a right angle creating an L shape. Stand this section upright.

**Step 2.** Take Panel 2 and fold the main crease at a right angle creating another L shape and stand it opposite Panel 1, creating a rectangle.

**Step 3.** Folding the vertical flap inwards, interlock all **A** Tabs into the **A** Slots. Push the Tabs until they are securely located and locked into the Slots.

**Step 4.** Folding the vertical flap inwards, interlock all **B** Tabs into the **B** Slots. Push the Tabs until they are securely located and locked into the Slots.

**Step 5.** Take Panel 3 and fold the horizontal flaps inwards. Interlock all the **C** Tabs in the **C** Slots. For ease of assembly, start at the front of the Fire Engine and work your way to the rear.

**Step 6.** Once the main structure is assembled, take the Ladder and interlock into the **D** Slots. **DO NOT USE THE LADDER TO CLIMB.**

**Step 7.** Your Fire Engine is now ready ! Decorate it with Wax Crayons or Felt Tip Pens and enjoy !

