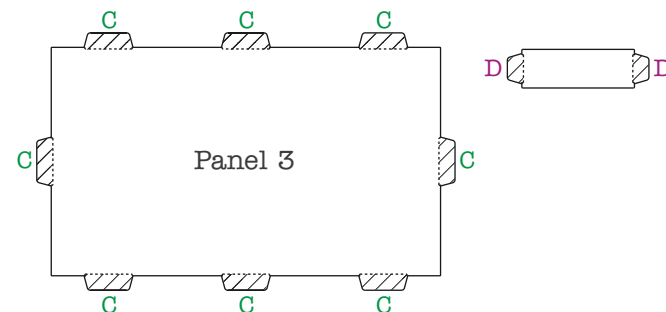
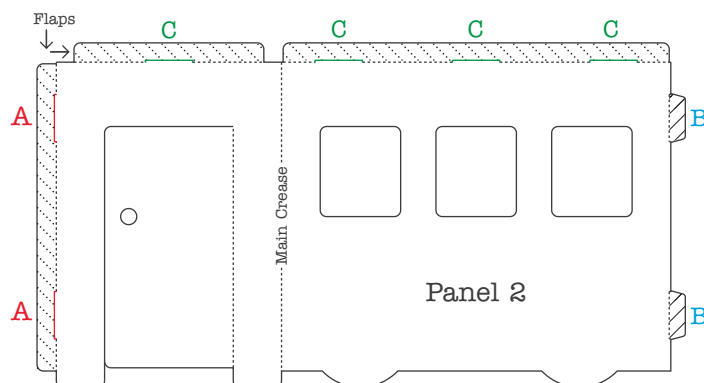
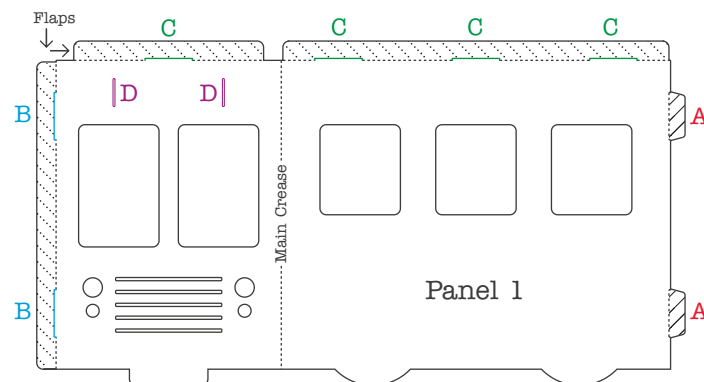
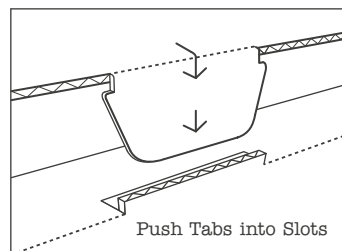
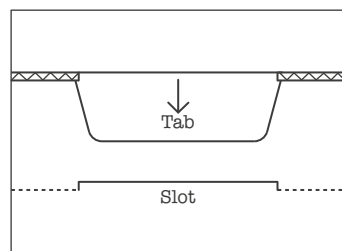
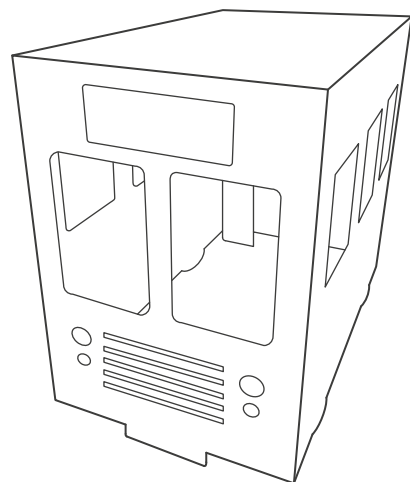


Bus Assembly Instructions



Please read the instructions in full before assembly and note that all creases have been pre-folded.

Step 1. Take Panel 1 and fold the main crease at a right angle creating an L shape. Stand this section upright.

Step 2. Take Panel 2 and fold the main crease at a right angle creating another L shape and stand it opposite Panel 1, creating a rectangular shape.

Step 3. Folding the vertical flap inwards, interlock all **A** Tabs into the **A** Slots. Push the Tabs until they are securely located and locked into the Slots.

Step 4. Folding the vertical flap inwards, interlock all **B** Tabs into the **B** Slots. Push the Tabs until they are securely located and locked into the Slots.

Step 5. Take Panel 3 and fold the horizontal flaps inwards. Interlock all the **C** Tabs in the **C** Slots. For ease of assembly, start at the front of the Bus and work your way to the rear.

Step 6. Once the main structure is assembled, take the Destination Board and interlock the Tabs into the **D** Slots.

Step 7. Your Bus is now ready ! Decorate it with Wax Crayons or Felt Tip Pens and enjoy !



Flaps



Tabs